

LESLIE H. GEESLIN
REGISTERED SURVEYOR NO 5248
P O. BOX 274
RUSHSVLVANIA, OHIO 43347

TELEPHONE: (513) 468-2793
REIKERT SURVEY

November 18, 1991

The following described real estate situated in the State of Ohio, County of Logan, Township of Jefferson, being part of Virginia Military Survey 4477 and more particularly described as follows:

Beginning at a 5/8 inch iron bar found in the west line of County Highway 55 at the northeast corner of James M. Day's 4.500 acre tract as described in D. B. Vol. 403 Page 946, said bar being in the west line of an abandoned railroad.

Thence with said Day's east line and the west line of said abandoned R. R. on an 1810.3 foot radius curve to the right, the chord of which measures N. 41° 57' 42" W. 302.42 feet, to a 5/8 inch iron bar found.

Thence with said west line and the east line of said James Day and Donald Ropp's 171.95 acre tract as described in D. B. Vol. 394 Page 922 N. 36° 51' 54" W. 638.24 feet to a 5/8 inch iron bar set, passing a 5/8 inch iron bar found at said Day's northeast corner at 382.10 feet.

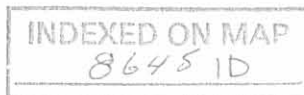
Thence N. 62° 51' 57" E. 437.73 feet to a 5/8 inch iron bar set.

Thence S. 86° 23' 58" E. 268.36 feet to a point in the east line of V. M. S. 4477 that is N. 86° 23' 58" W. 15.00 feet from a 5/8 inch iron bar set in the centerline of C. H. 55, passing a 5/8 inch iron bar set at 253.36 feet.

Thence with said V. M. S. S. 4° 30' 00" W. 921.14 feet to the place of beginning.

Containing 7.692 acres more or less of which none is in the right-of-way of C. H. 55.

The above described 7.692 acre tract is in the southeast corner of Joy Ann Rickert's 30.00 acre tract as described in O. R. Vol. 122 Page 300.



Leslie H. Geeslin

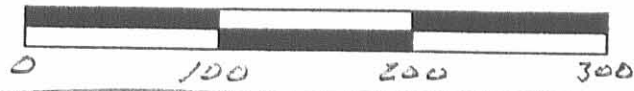
JOY ANN REIKERT
 30.00 AC.
 O.R. VOL. 122 PG. 300



DONALD W. ZOPP
 171.95 AC.
 D.B. VOL. 394 PG. 722

JAMES M. DAY
 4.500 AC.
 D.B. VOL. 403 PG 946

SURVEY OF 7.692 AC. TRACT
 IN VIRGINIA MILITARY SURVEY
 4477, JEFFERSON TOWNSHIP,
 LOGAN COUNTY, OHIO FOR
 JOY ANN REIKERT.
 NOVEMBER 18, 1991
 SCALE: 1" = 100'

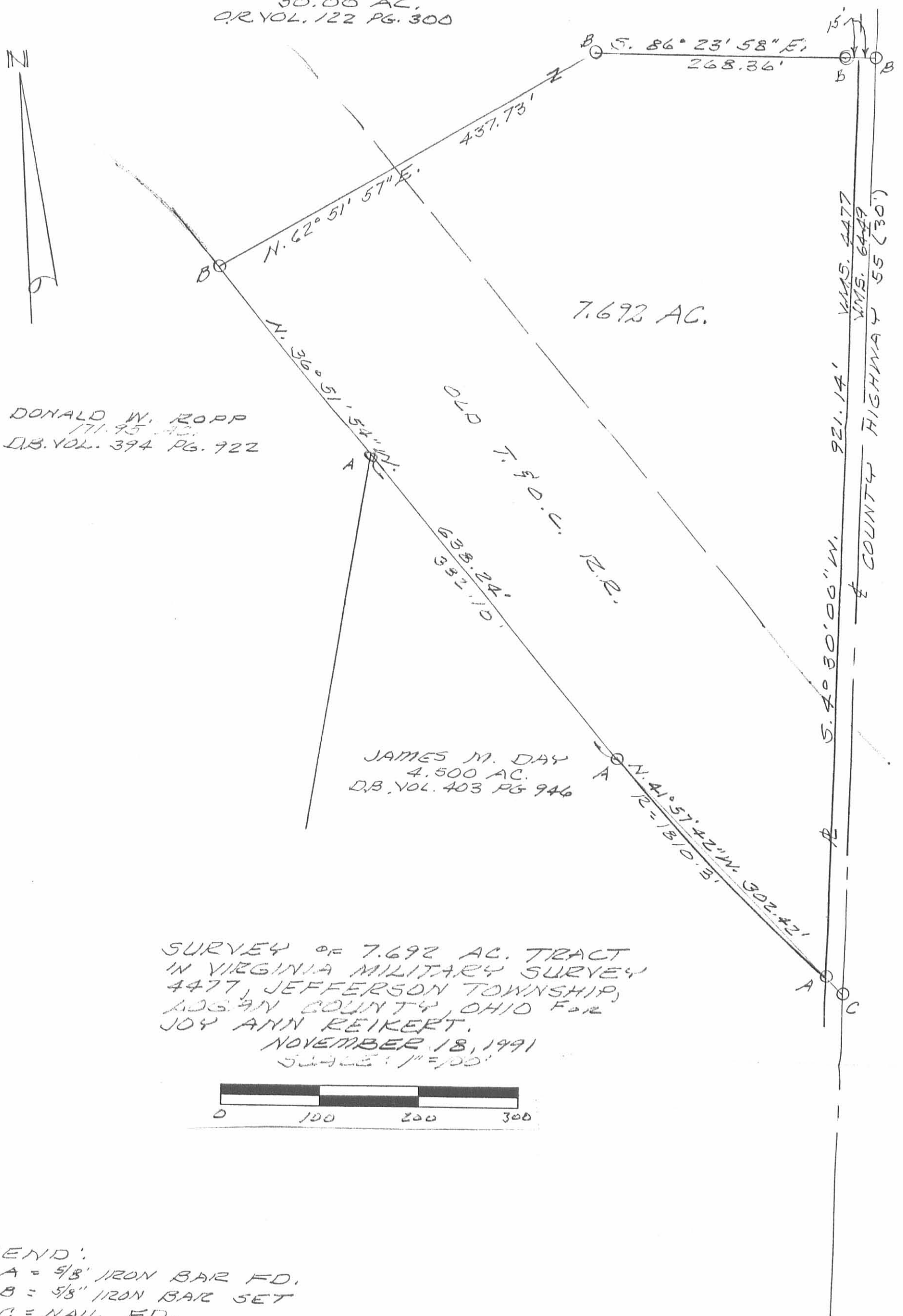


LEGEND:
 A = 5/8" IRON BAR FD.
 B = 5/8" IRON BAR SET
 C = NAIL FD.

INDEXED ON MAP
 8645 1P



Leslie H. Geeslin



11-6-15

Lee Surveying and Mapping Co., Inc.

APPROVED Land Surveys • Topography • Subdivisions • Construction Layout

117 N. Madriver St.
Bellefontaine OH 43311



Phone: (937) 593-7335
Fax: (937) 593-7444
surveys@lsminc.us

WISH AND CLIMER 3.010 ACRES

Lying in Virginia Military Survey 4477, Jefferson Township, Logan County, Ohio.

Being out of the Joy Ann Wish and Steve A. Climer 22.308 acre tract as deeded and described in Official Record 1198, Page 424, Tract I of the Logan County Records of Deeds and being more particularly described as follows:

Commencing on a railroad spike found on the intersection of the center-lines of County Highway 55 and Mount Crest Drive.

THENCE, with the center-line of County Highway 55 (60 feet wide), the following three courses:

S 06°-18'-17"W, a distance of 338.46 feet to a MAG nail found.

S 04°-36'-53"W, a distance of 671.89 feet to a railroad spike found.

S 05°-26'-51"W, a distance of 444.99 feet to a 5/8 inch iron rod found.

THENCE, with the north line of the Steven R. Mortimer 7.692 acre tract (O.R. 755, Pg. 46) extended, N 85°-17'-37"W, a distance of 14.98 feet to a 5/8 inch iron rod set on the east line of Virginia Military Survey 4477 at the TRUE POINT OF BEGINNING.

THENCE, with the north line and north line extended of the said 7.692 acre tract, N 85°-17'-37"W, a distance of 326.60 feet to a 5/8 inch iron rod set, passing 5/8 inch iron rods found at 15.00 feet and 268.45 feet.

THENCE, N 01°-25'-00"E, a distance of 399.73 feet to a 5/8 inch iron rod set.

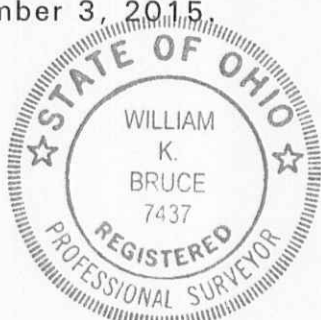
THENCE, S 80°-53'-57"E, a distance of 355.30 feet to a 5/8 inch iron rod set on the east line of Virginia Military Survey 4477.

THENCE, with the east line of the Virginia Military Survey 4477, S 05°-25'-58"W, a distance of 371.88 feet to the point of beginning.

Containing 3.010 acres, of which 0.128 acre is within the highway right-of-way.

Property is subject to any and all previous easements and rights-of-way of record.

The basis for bearings is the center-line of County highway 55, being S 05°-26'-51"W, and all other bearings are from angles and distances measured in a field survey by Lee Surveying and Mapping Co., Inc. on November 3, 2015.



ORIGINAL STAMP IN GREEN

Description prepared by:

William K. Bruce
Professional Surveyor 7437
November 4, 2015

INDEXED ON MAP

8645 2D-1

60170915



APPROVED

12-4-15

Lee Surveying and Mapping Co., Inc.

Land Surveys • Topography • Subdivisions • Construction Layout

117 N. Madriver St.
Bellefontaine OH 43311



Phone: (937) 593-7335
Fax: (937) 593-7444
surveys@lsminc.us

WISH AND CLIMER 20 FEET WIDE INGRESS/EGRESS EASEMENT

Lying in Virginia Military Survey 4477, Jefferson Township, Logan County, Ohio.

Being a 20 feet wide ingress/egress easement over a portion of the Joy Ann Wish and Steve A. Climer 22.308 acre tract as deeded and described in Official Record 1198, Page 424, Tract I of the Logan County Records of Deeds and being more particularly described as follows:

Commencing on a railroad spike found on the intersection of the center-lines of County Highway 55 and Mount Crest Drive.

THENCE, with the center-line of County Highway 55 (60 feet wide), the following three courses:

S 06°-18'-17"W, a distance of 338.46 feet to a MAG nail found.

S 04°-36'-53"W, a distance of 671.89 feet to a railroad spike found.

S 05°-26'-51"W, a distance of 444.99 feet to a 5/8 inch iron rod found.

THENCE, with the north line of the Steven R. Mortimer 7.692 acre tract (O.R. 755, Pg. 46) extended, N 85°-17'-37"W, a distance of 14.98 feet to a 5/8 inch iron rod set on the east line of Virginia Military Survey 4477.

THENCE, with the east line of the Virginia Military Survey 4477, N 05°-25'-58"E, a distance of 371.88 feet to a 5/8 inch iron rod set.

THENCE, N 80°-53'-57"W, a distance of 115.81 feet to a point at the TRUE POINT OF BEGINNING.

THENCE, with the center-line of the 20 feet wide easement, the following three courses:

N 45°-35'-07"E, a distance of 55.62 feet to a point.

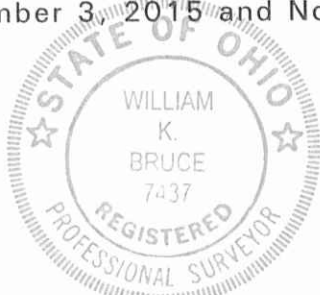
N 83°-02'-38"E, a distance of 41.88 feet to a point.

N 88°-20'-41"E, a distance of 24.09 feet to a point on the west right-of-way of County Highway 55 at the terminus of said easement

The sidelines of said easement to be shortened or prolonged to meet at angle point intersections.

Property is subject to any and all previous easements and rights-of-way of record.

The basis for bearings is the center-line of County highway 55, being S 05°-26'-51"W, and all other bearings are from angles and distances measured in a field survey by Lee Surveying and Mapping Co., Inc. on November 3, 2015 and November 25, 2015.



Description prepared by:

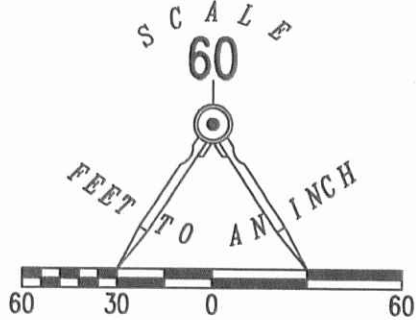
William K. Bruce

William K. Bruce
Professional Surveyor 7437
December 1, 2015

INDEXED ON MAP
8645 2D-2

60171115

12-4-15
 APPROVED



**SURVEY OF 3.010 ACRES OUT OF THE
 JOY ANN WISH AND
 STEVE A. CLIMER
 22.308 ACRE TRACT
 OFFICIAL RECORD 1198, PAGE 424
 TRACT I
 VIRGINIA MILITARY SURVEY 4477
 JEFFERSON TOWNSHIP
 LOGAN COUNTY, OHIO**

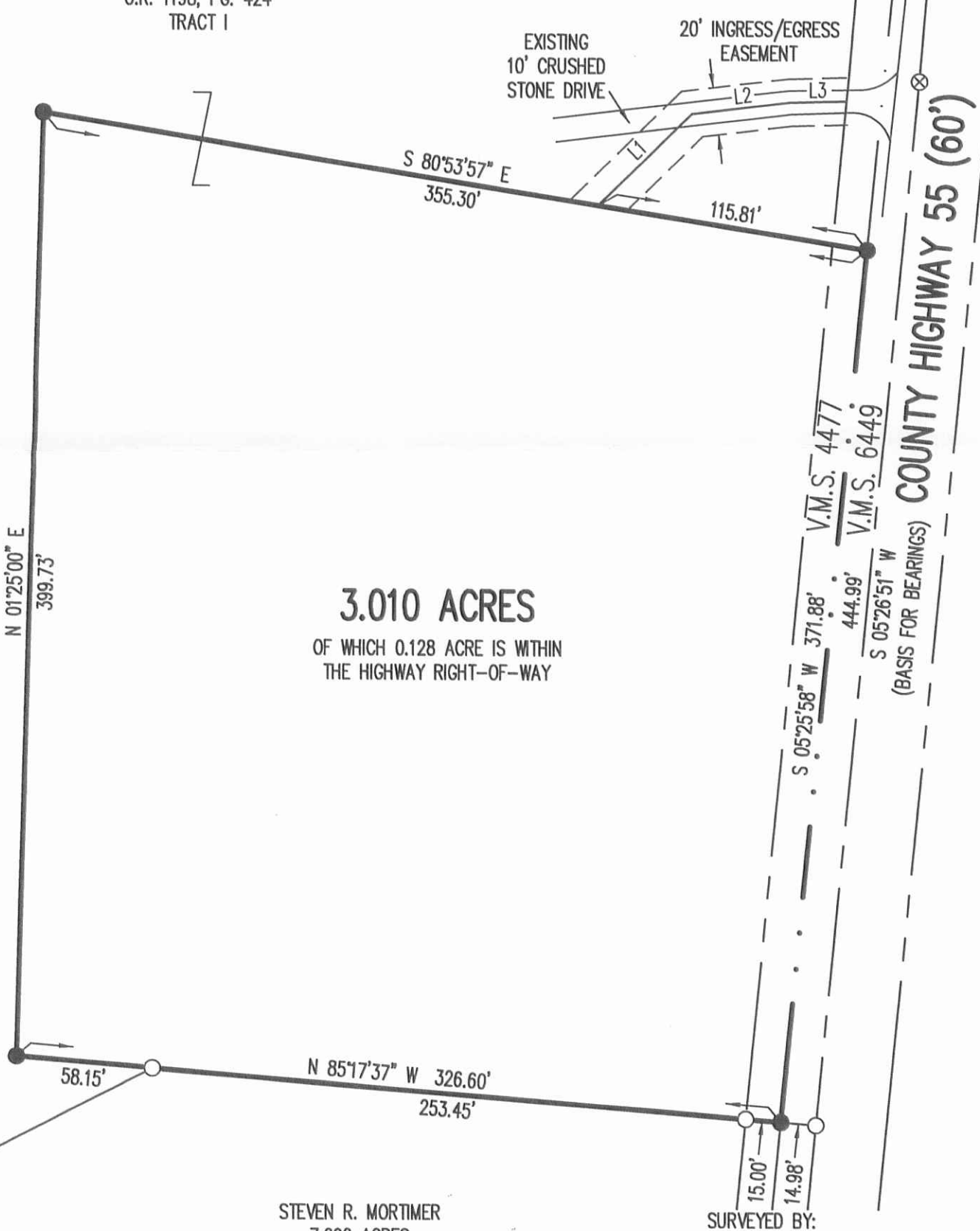
LEGEND

- 5/8 INCH IRON ROD SET WITH PLASTIC I.D. CAP STAMPED "LSM7437"
- 5/8 INCH IRON ROD FOUND
- ⊗ RAILROAD SPIKE FOUND
- ◎ MAG NAIL FOUND

CHORDS TO POINTS ALONG CENTER-LINE OF
 20 FEET WIDE INGRESS/EGRESS EASEMENT

LINE	BEARING	DISTANCE
L1	N 45°35'07" E	55.62'
L2	N 83°02'38" E	41.88'
L3	N 88°20'41" E	24.09'

JOY ANN WISH AND
 STEVE A. CLIMER
 22.308 ACRES
 O.R. 1198, PG. 424
 TRACT I



3.010 ACRES

OF WHICH 0.128 ACRE IS WITHIN
 THE HIGHWAY RIGHT-OF-WAY

STEVEN R. MORTIMER
 7.692 ACRES
 O.R. 755, PG. 46

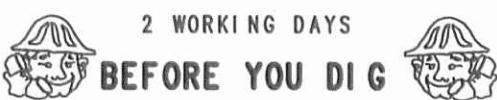
SURVEYED BY:



WILLIAM K. BRUCE
 PROFESSIONAL SURVEYOR 7437
 NOVEMBER 3, 2015
 REVISED NOVEMBER 25, 2015

COPYRIGHT 2015 BY:
LEE SURVEYING & MAPPING CO., INC.
 117 North Madriver Street
 BELLEFONTAINE, OHIO 43311
 (937) 593-7335
 WWW.LSMINC.US
 surveys@lsminc.us

INDEXED ON MAP
8645 2P



CALL TOLL FREE **800-362-2764**

OHIO UTILITIES PROTECTION SERVICE

KSS D1115 60171115 L-6017-3