

REC'D 1-5-95 8M OK ✓



# Lee Surveying and Mapping Co.



Farm Surveys • Lot Surveys • Topography • Subdivisions • Construction Layout

143 EAST COLUMBUS AVENUE  
BELLEFONTAINE, OHIO 43311

(513) 593-7335

JEFFREY I. LEE, P.S.

## DENNIS D. KUBA 4.340 ACRES

Lying in Virginia Military Survey 3327, Jefferson Township, Logan County, Ohio.

Being out of the Dennis D. Kuba 24.55 acre tract as deeded and described in Official Record 15, Page 556 of the Logan County Records of Deeds and being more particularly described as follows:

Beginning at a PK nail set at the intersection of the center-line of Ohio Route 47 and the east line of Virginia Military Survey 3327.

THENCE, with the center-line of Ohio Route 47, S 66°-47'-00" W, a distance of 297.82 feet to a railroad spike set at the TRUE POINT OF BEGINNING.

THENCE, S 11°-44'-21" E, a distance of 679.72 feet to a 5/8 inch iron rod set.

THENCE, S 85°-03'-36" W, a distance of 305.38 feet to a 5/8 inch iron rod set.

THENCE, with the east line of the J. Walter Cramer 111.21 acre tract (Vol. 316, Pg. 637), N 10°-58'-59" W, a distance of 583.61 feet to a railroad spike set.

THENCE, with the center-line of Ohio Route 47 (60 feet wide), N 66°-47'-00" E, a distance of 301.57 feet to the point of beginning.

Containing 4.340 acres of which 0.208 acre is within the highway right-of-way.

The basis for bearings is based upon the center-line of Ohio Route 47 being N 66°-47'-00" E, and all other bearings are from angles and distances measured in a field survey by Lee Surveying and Mapping Company on December 22, 1994.

Description prepared by:

Jeffrey I. Lee  
Professional Surveyor 6359  
January 5, 1995



L 2254

ORIGINAL STAMP IN GREEN

INDEXED ON MAP  
8968 10

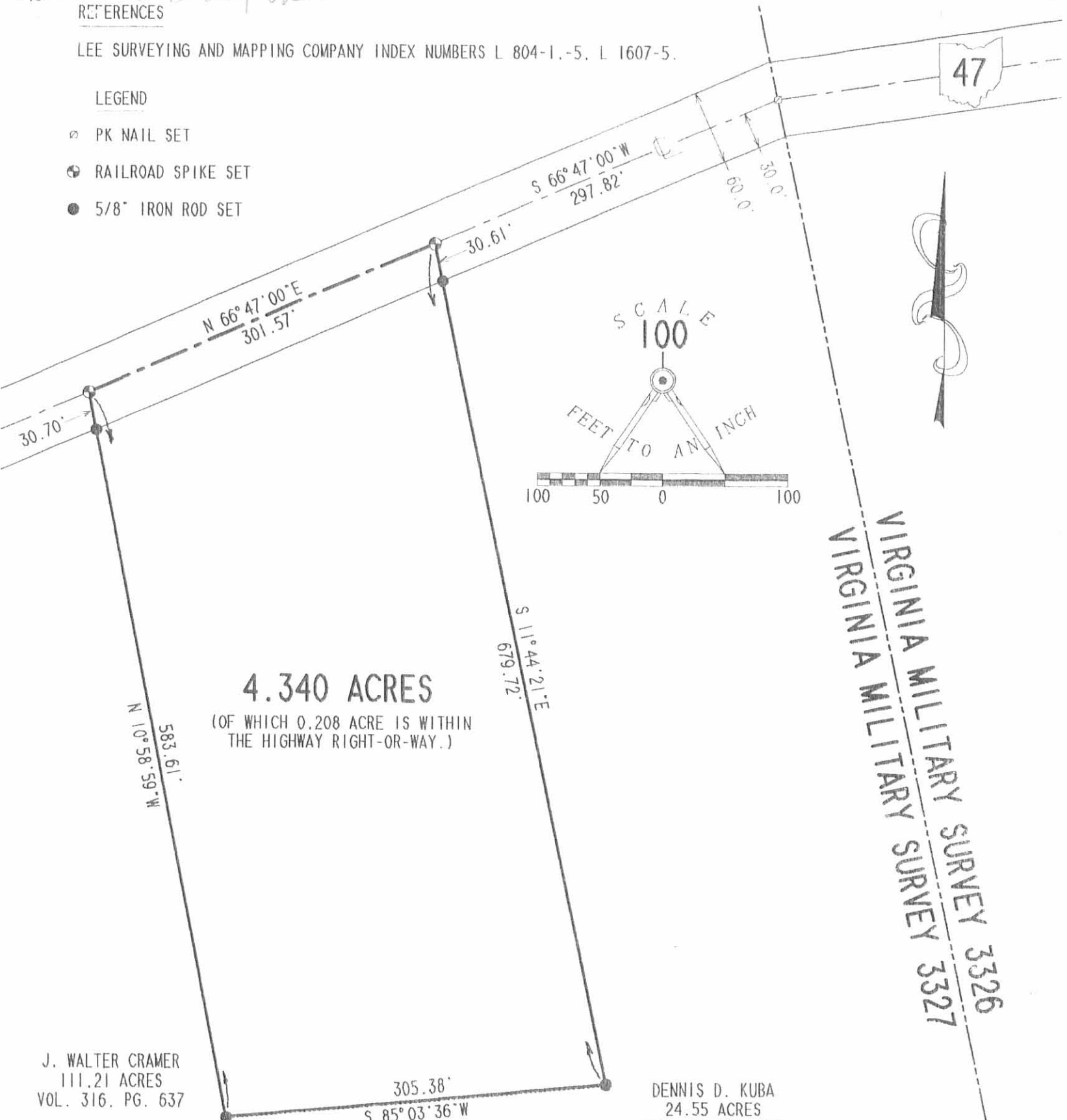
1 REC'D 1-5-95 SMY OK ✓

REFERENCES

LEE SURVEYING AND MAPPING COMPANY INDEX NUMBERS L 804-1.-5. L 1607-5.

LEGEND

- ⊙ PK NAIL SET
- ⊕ RAILROAD SPIKE SET
- 5/8" IRON ROD SET



4.340 ACRES

(OF WHICH 0.208 ACRE IS WITHIN THE HIGHWAY RIGHT-OR-WAY.)

VIRGINIA MILITARY SURVEY 3326  
VIRGINIA MILITARY SURVEY 3327

J. WALTER CRAMER  
111.21 ACRES  
VOL. 316. PG. 637

DENNIS D. KUBA  
24.55 ACRES  
O.R. 15. PG. 556

SURVEY OF 4.340 ACRES OUT OF  
THE DENNIS D. KUBA  
24.55 ACRE TRACT  
OFFICIAL RECORD 15, PAGE 556  
VIRGINIA MILITARY SURVEY 3327  
JEFFERSON TOWNSHIP  
LOGAN COUNTY  
OHIO

INDEXED ON MAP  
8968 IP

SURVEYED BY:

*[Signature]*  
JEFFREY L. LEE  
PROFESSIONAL SURVEYOR 6359  
DECEMBER 22, 1994



LEE SURVEYING & MAPPING CO.  
143 East Columbus Avenue  
BELLEFONTAINE, OHIO 43311  
(513) 593-7335



2 WORKING DAYS

BEFORE YOU DIG

CALL TOLL FREE 800-362-2764

OHIO UTILITIES PROTECTION SERVICE.

ORIGINAL STAMP IN GREEN

D253 DKUBA

L 2254-4