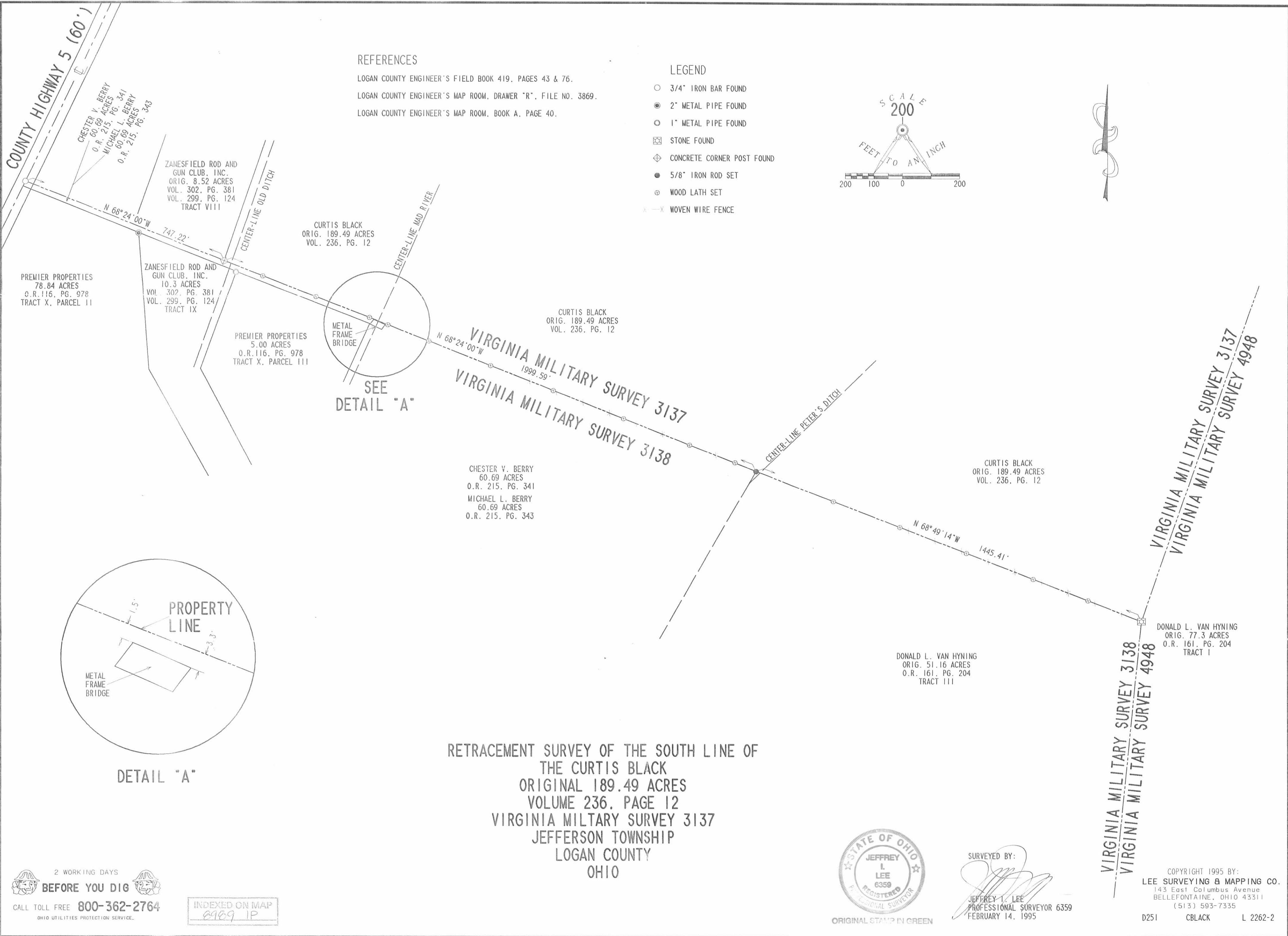


REC'D 2-16-95 gmy OK

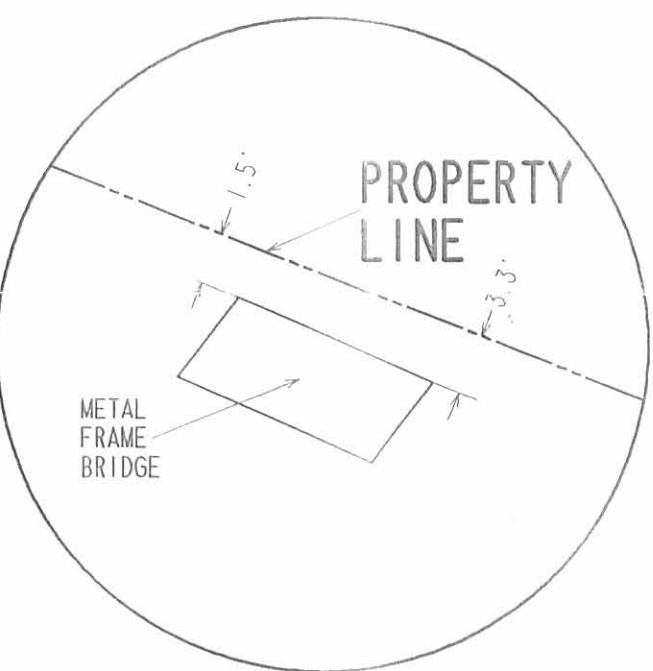
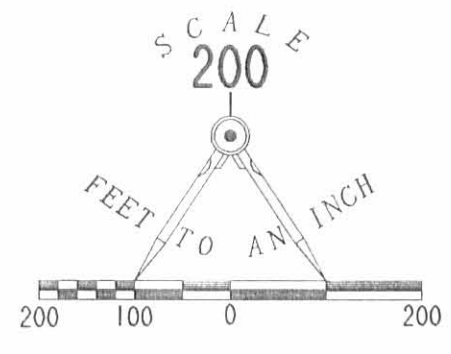


REFERENCES

LOGAN COUNTY ENGINEER'S FIELD BOOK 419, PAGES 43 & 76.  
 LOGAN COUNTY ENGINEER'S MAP ROOM, DRAWER "R", FILE NO. 3869.  
 LOGAN COUNTY ENGINEER'S MAP ROOM, BOOK A, PAGE 40.

LEGEND

- 3/4" IRON BAR FOUND
- 2" METAL PIPE FOUND
- 1" METAL PIPE FOUND
- ⊠ STONE FOUND
- ⊕ CONCRETE CORNER POST FOUND
- 5/8" IRON ROD SET
- ⊖ WOOD LATH SET
- X— WOVEN WIRE FENCE



DETAIL "A"

RETRACEMENT SURVEY OF THE SOUTH LINE OF  
 THE CURTIS BLACK  
 ORIGINAL 189.49 ACRES  
 VOLUME 236, PAGE 12  
 VIRGINIA MILITARY SURVEY 3137  
 JEFFERSON TOWNSHIP  
 LOGAN COUNTY  
 OHIO

2 WORKING DAYS  
**BEFORE YOU DIG**  
 CALL TOLL FREE 800-362-2764  
 OHIO UTILITIES PROTECTION SERVICE.

INDEXED ON MAP  
 8969 1P



SURVEYED BY:  
*Jeffrey L. Lee*  
 JEFFREY L. LEE  
 PROFESSIONAL SURVEYOR 6359  
 FEBRUARY 14, 1995

VIRGINIA MILITARY SURVEY 3138  
 VIRGINIA MILITARY SURVEY 4948  
 DONALD L. VAN HYNING  
 ORIG. 77.3 ACRES  
 O.R. 161, PG. 204  
 TRACT I  
 CURTIS BLACK  
 ORIG. 189.49 ACRES  
 VOL. 236, PG. 12  
 CHESTER V. BERRY  
 60.69 ACRES  
 O.R. 215, PG. 341  
 MICHAEL L. BERRY  
 60.69 ACRES  
 O.R. 215, PG. 343  
 ZANESFIELD ROD AND GUN CLUB, INC.  
 10.3 ACRES  
 VOL. 302, PG. 381  
 VOL. 299, PG. 124  
 TRACT IX  
 PREMIER PROPERTIES  
 5.00 ACRES  
 O.R. 116, PG. 978  
 TRACT X, PARCEL 111  
 ZANESFIELD ROD AND GUN CLUB, INC.  
 8.52 ACRES  
 VOL. 302, PG. 381  
 VOL. 299, PG. 124  
 TRACT VIII  
 CHESTER V. BERRY  
 60.69 ACRES  
 O.R. 215, PG. 341  
 MICHAEL L. BERRY  
 60.69 ACRES  
 O.R. 215, PG. 343  
 PREMIER PROPERTIES  
 78.84 ACRES  
 O.R. 116, PG. 978  
 TRACT X, PARCEL 11  
 VIRGINIA MILITARY SURVEY 3137  
 VIRGINIA MILITARY SURVEY 4948  
 DONALD L. VAN HYNING  
 ORIG. 77.3 ACRES  
 O.R. 161, PG. 204  
 TRACT I  
 CURTIS BLACK  
 ORIG. 189.49 ACRES  
 VOL. 236, PG. 12  
 CURTIS BLACK  
 ORIG. 189.49 ACRES  
 VOL. 236, PG. 12  
 CENTER-LINE MAD RIVER  
 CENTER-LINE PETER'S DITCH  
 CENTER-LINE OLD DITCH  
 COUNTY HIGHWAY 5 (60')  
 METAL FRAME BRIDGE  
 METAL FRAME BRIDGE  
 PROPERTY LINE  
 N 68°24'00"W 747.22'  
 N 68°24'00"W 1999.59'  
 N 68°49'14"W 1445.41'  
 200 100 0 200  
 FEET TO AN INCH  
 SCALE  
 200  
 STATE OF OHIO  
 JEFFREY L. LEE  
 6359  
 REGISTERED  
 PROFESSIONAL SURVEYOR  
 ORIGINAL STAMP IN GREEN  
 SURVEYED BY:  
 JEFFREY L. LEE  
 PROFESSIONAL SURVEYOR 6359  
 FEBRUARY 14, 1995  
 COPYRIGHT 1995 BY:  
 LEE SURVEYING & MAPPING CO.  
 143 East Columbus Avenue  
 BELLEFONTAINE, OHIO 43311  
 (513) 593-7335  
 D251 CBLACK L 2262-2