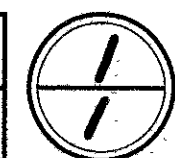
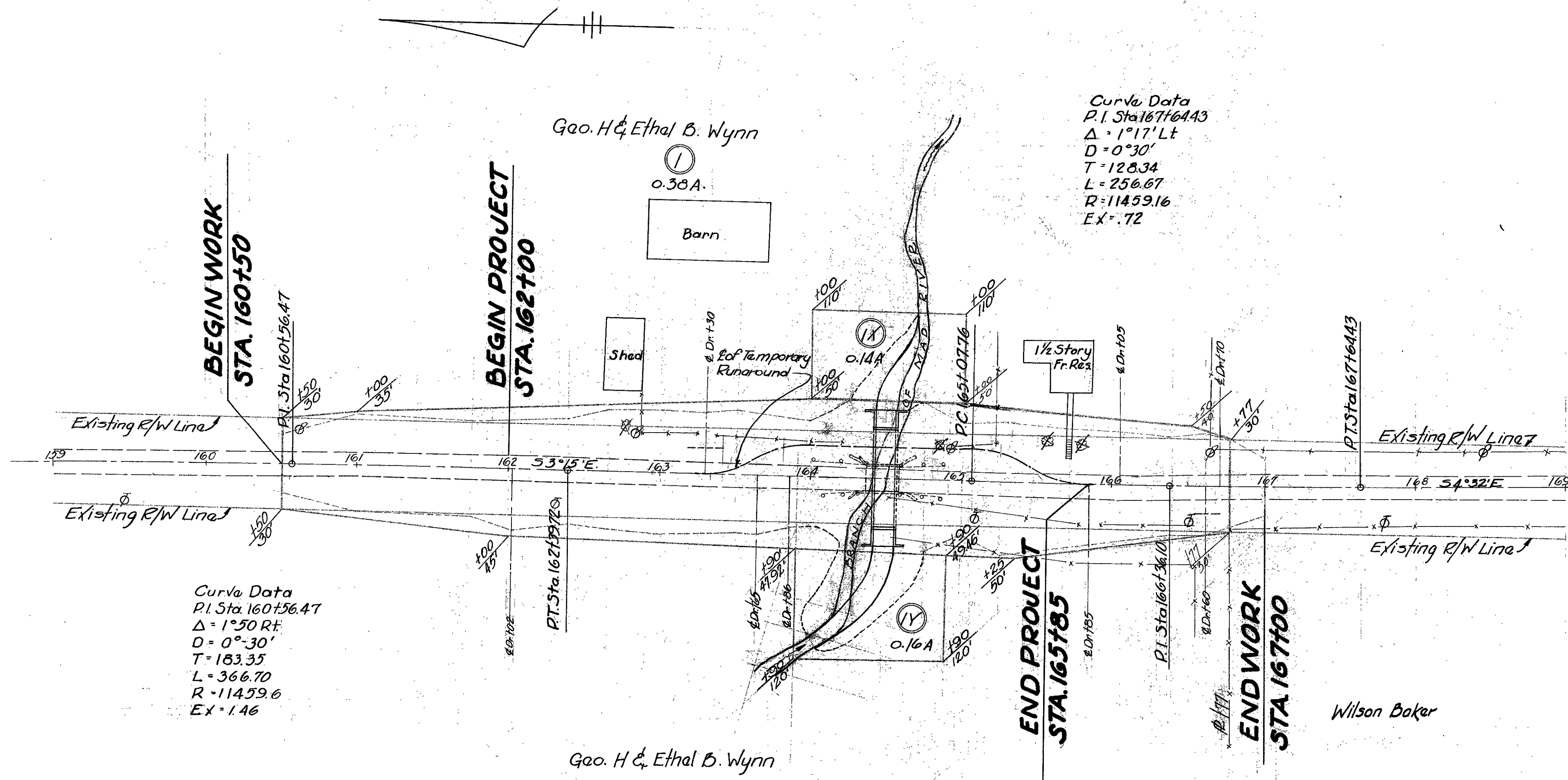


FED. RD. DIVISION	STATE	PROJECT	FISCAL YEAR
2	OHIO	H.I.F.	1948



LOGAN COUNTY
 LOG-33 ~ 22.52
 BRIDGE N=L033-228
 R/W PLAN

JEFFERSON TWP.
 V.M.S. 3439



Curve Data
 P.I. Sta 167+64.43
 $\Delta = 1^{\circ}17'Lt$
 $D = 0^{\circ}30'$
 $T = 128.34$
 $L = 256.67$
 $R = 11459.16$
 $EX = .72$

Curve Data
 P.I. Sta 160+56.47
 $\Delta = 1^{\circ}50' R$
 $D = 0^{\circ}30'$
 $T = 183.35$
 $L = 366.70$
 $R = 11459.6$
 $EX = 1.46$

JEFFERSON TWP.
 V.M.S. 3439

Resurvey - part of C.R. 5 & part of C.R. 25
 From Columbus St. (Zanesfield) North to S.P. 64
 FB 710 Jefferson Twp., Logan Co., Ohio

381+31.31 - P.I. - $\frac{5}{8}$ " dia. capped re-bar set

Lt. def. \angle $4^{\circ}26'05''$

$D_0 = 4^{\circ}$ (from 1921 R/W plans L-4A)

$R = 1432.39'$

$T = 80.52'$

$L = 160.87'$

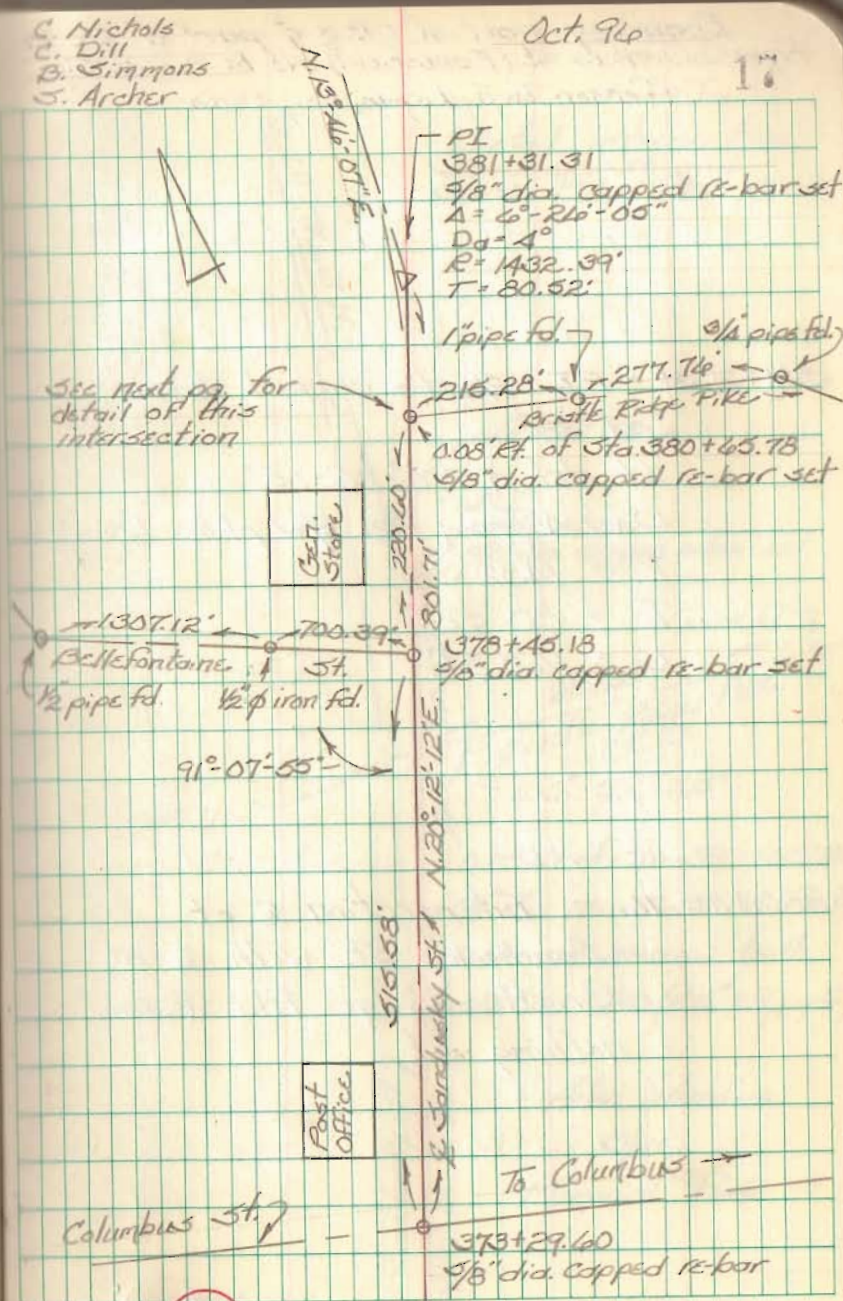
378+45.18 - Intersection Bellefontaine St.
 & Sandusky St. - $\frac{5}{8}$ " dia.
 capped re-bar set. - Replaces
 PK nail set in 1990 (F.B.# 709; pg. 42)

373+29.60 - Fd. harrow tooth (this
 pt. established by J. Lee using
 1933 Wright Survey - Ref. F.B. 670;
 pgs. 19-24) - S.L.M. = 7.07 mile -
 Replaced with $\frac{5}{8}$ " dia. capped
 re-bar.

C. Nichols
 C. Dill
 B. Simmons
 S. Archer

Oct. 96

17



9116

Resurvey part of C.R. 5 & part of C.R. 25
 From Columbus St. (Zanesfield) North to S.R. 646
 Jefferson Twp., Logan Co., Ohio

FB 710

381+31.31 - P.I. - $\frac{5}{8}$ " dia. capped re-bar
 set

Lt. def. $\angle = 4^{\circ}-26'-05''$

$D_a = 4'$ (from 1921 R/W plans L-4A)

$R = 1432.39'$

$T = 80.52'$

$L = 160.87'$

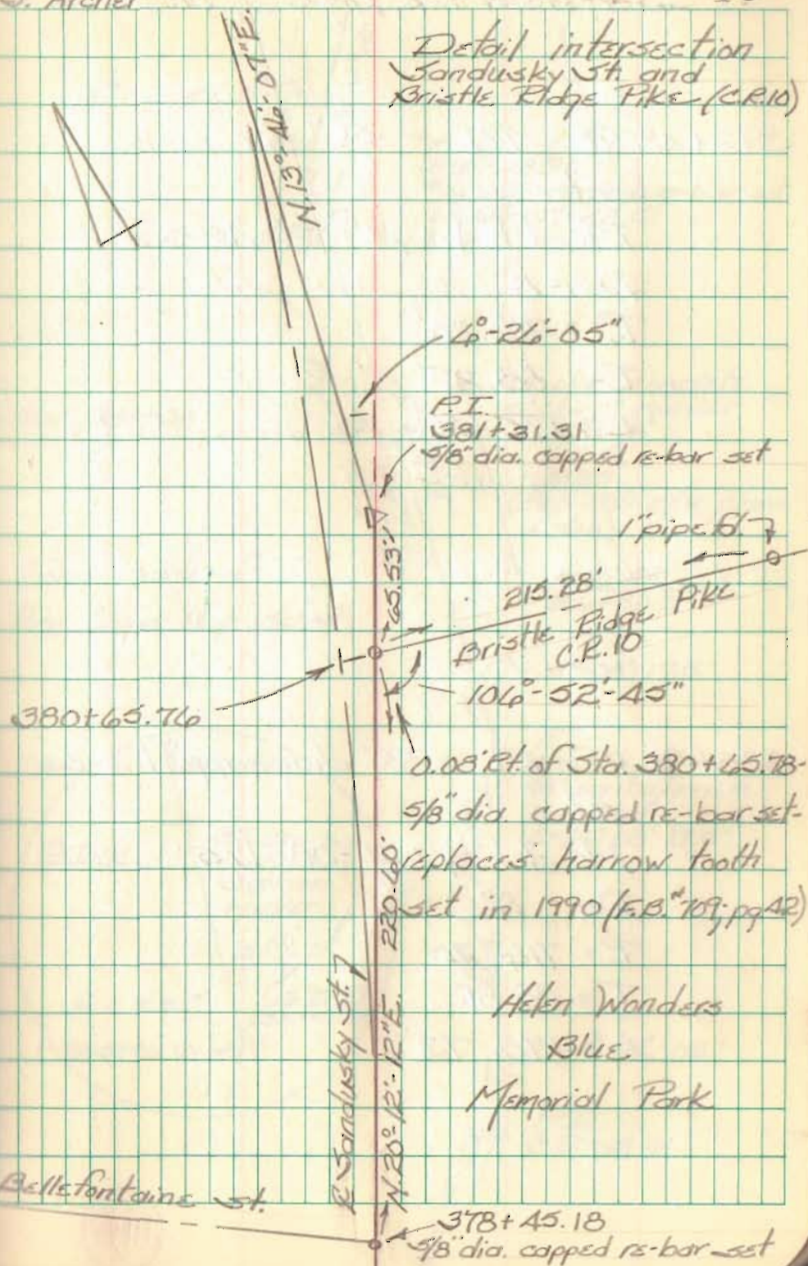
380+65.76 - Intersection \angle of
 Sandusky St. with \angle of
 Bristle Ridge Pike. (C.R. 10) -
 nothing set

C. Nichols
 C. Dill
 B. Simmons
 S. Archer

Oct. 96

18

Detail intersection
 Sandusky St. and
 Bristle Ridge Pike. (C.R. 10)



9116

Resurvey part of C.R. 5 & part of C.R. 25
Columbus St. (Zanesfield) North to S.R. 540
Jefferson Twp., Logan Co., Ohio

FB 710

392+48.90 - P.I. - $\frac{5}{8}$ " dia. re-bar

set

Rt. def. $\Delta = 14^{\circ} 02' - 42.5''$

$D_a = 8^{\circ}$

$R = 714.20'$

$T = 88.22'$

$L = 175.56'$

385+96.10 - P.I. - $\frac{5}{8}$ " dia. capped re-bar

set

Lt. def. $\Delta = 14^{\circ} 08' - 17.5''$

$D_a = 8^{\circ}$

$R = 714.20'$

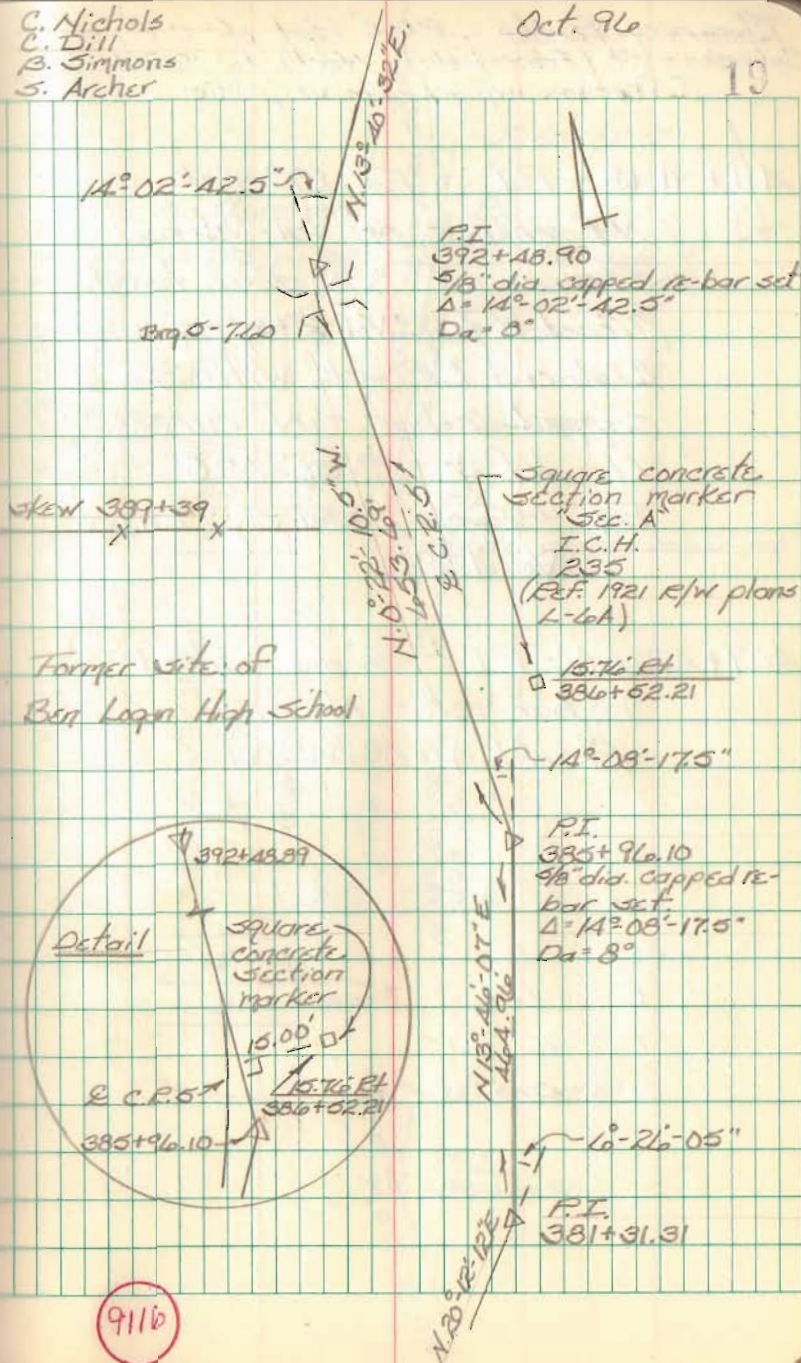
$T = 88.81'$

$L = 176.73'$

C. Nichols
C. Dill
B. Simmons
S. Archer

Oct. 96

19



Resurvey Part of C.R. 5 & Part of C.R. 25
 Columbus St. (Zanesfield) North to S.E. 540
 Jefferson Twp., Logan Co., Ohio

FB 710

411+91.13 - P.I. - Fd. RR Spk. -

N.E. corner of Vera M.

Stevenson's 0.23 acre tract
 (Tract II, O.R. Vol. 293; pg. 102) -
 Replaced RR Spk. with $\frac{5}{8}$ " dia.
 capped re-bar - No curve

Lt. def. $\sphericalangle = 2^{\circ}50'02.5''$

Ref. - Farley Survey Index
 No. 4281

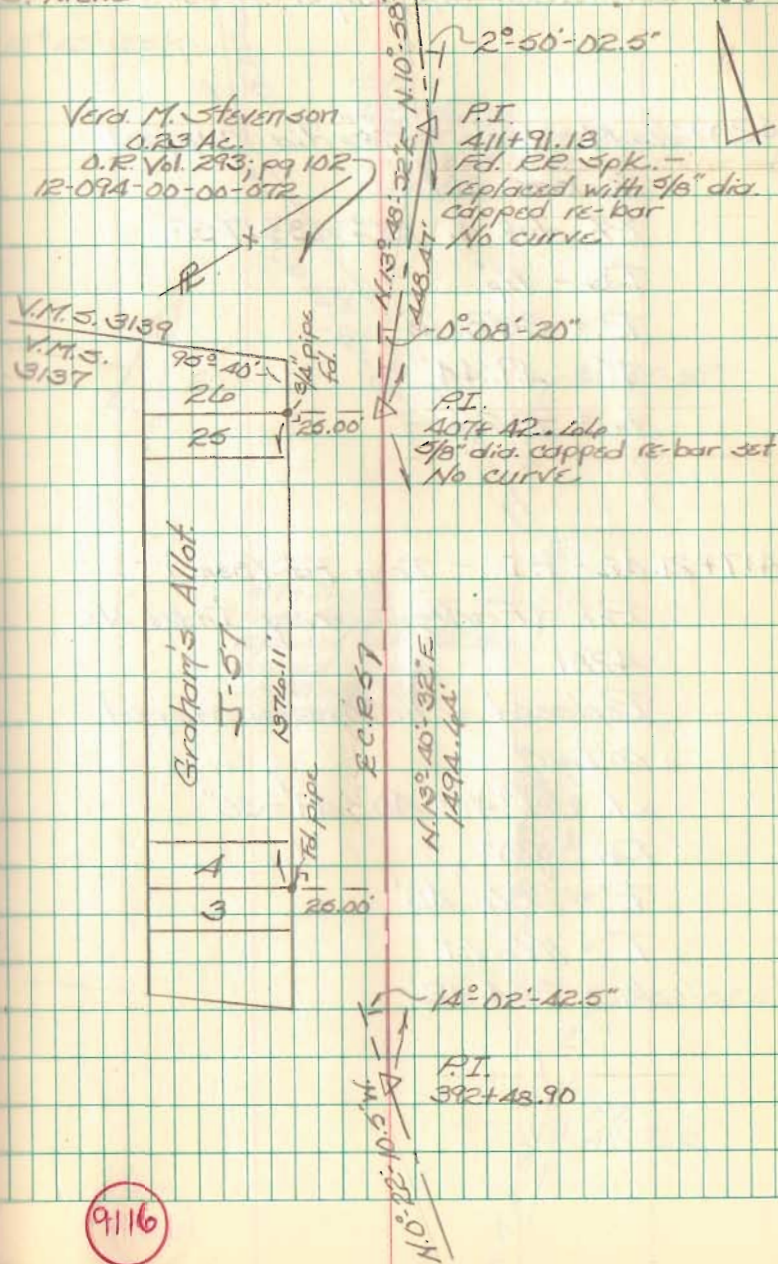
407+42.46 - P.I. - $\frac{5}{8}$ " dia. capped
 re-bar set - No curve.

Rt. def. $\sphericalangle = 0^{\circ}08'20''$

C. Nichols
 C. Dill
 B. Simmons
 S. Archer

Oct. 96

20



9116

Resurvey Part of C.R. 5 & Part of CR 25
 Columbus St. (Zanesfield) North to S.R. 540
 Jefferson Twp, Logan Co, Ohio

FB 710

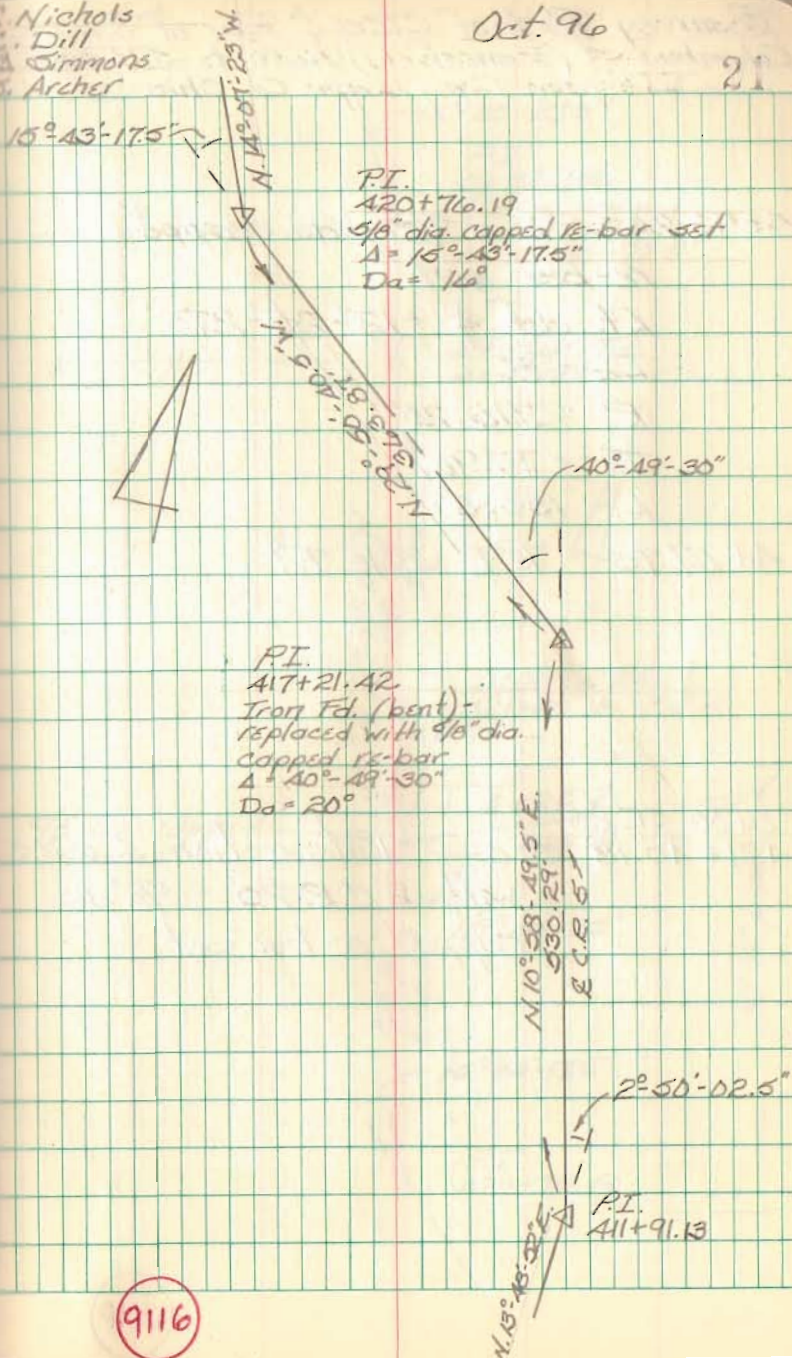
420+74.19 - P.I. - $\frac{5}{8}$ " dia. capped
 re-bar set
 Rt. def. $\Delta = 15^\circ-13'-17.5''$
 $D_a = 14'$
 $R. = 358.10'$
 $T. = 49.44'$
 $L. = 98.26'$

417+21.42 - P.I. - Iron Fd. (pent) -
 Ref. - Farley Survey Index No.
 4281
 Replaced with $\frac{5}{8}$ " dia. capped
 re-bar
 Lt. def. $\Delta = 40^\circ-49'-30''$
 $D_a = 20'$
 $R. = 286.48'$
 $T. = 106.44'$
 $L. = 204.12'$

C. Nichols
 C. Dill
 A. Simmons
 S. Archer

Oct. 96

21



9116

Resurvey Part of C.R. 5 & Part of C.R. 25
 Columbus St. (Zanesfield) North to S.R. 546
 Jefferson Twp., Logan Co., Ohio

FB 710

5+92.84 - P.I. - $\frac{5}{8}$ " dia. capped
 re-bar set

Lt. def $\angle = 12^\circ-25'-27.5''$

$D_a = 8'$

$R = 714.20'$

$T = 77.96'$

$L = 155.30'$

4+67.75 - R.R. Spk. Fd.

0+00 CR 25
 421+40.18 CR 5 - Intersection & C.R. 5
 with & C.R. 25 - $\frac{5}{8}$ " dia.
 capped re-bar set

C. Nichols
 C. Dill
 B. Simmons
 S. Archer

Oct. 96

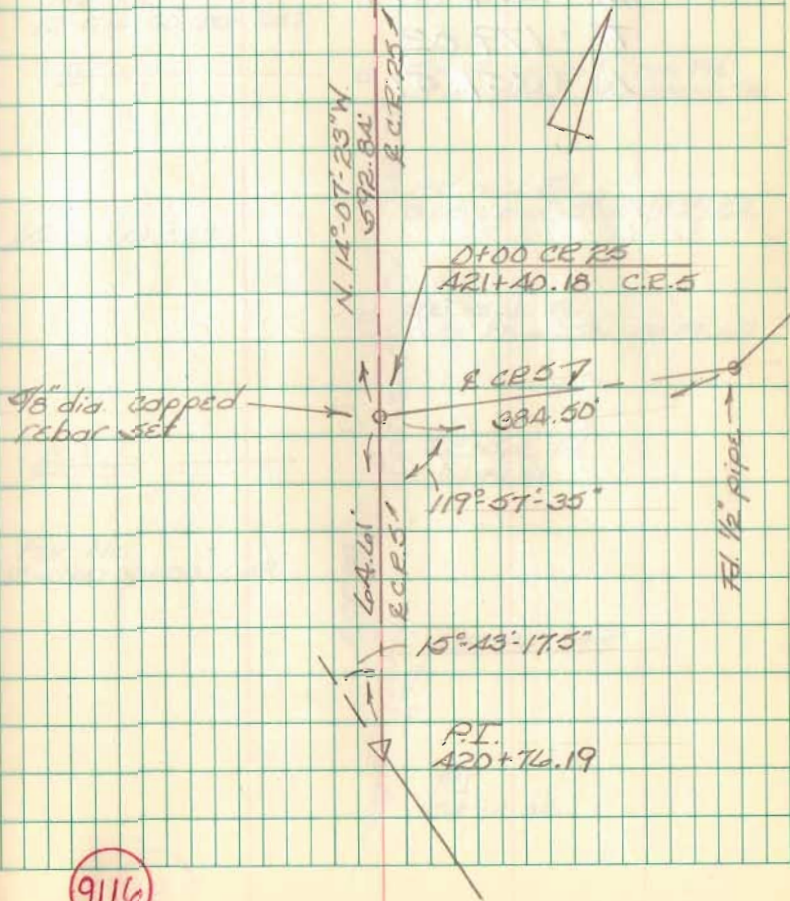
22

Par. No.
 12-094-00-00-049

P.I.
 5+92.84
 $\frac{5}{8}$ " dia. capped
 re-bar set
 $\angle = 12^\circ-25'-27.5''$
 $D_a = 8'$

R — X —

R.R. Spk. Fd.
 4+67.75



Resurvey Part of C.R. 5 & Part of C.R. 25
 Columbus St. (Zanesfield) North to S.R. 540
 Jefferson Twp., Logan Co., Ohio

FB 710

1A+36.98 - P.I. - $\frac{5}{8}$ " dia. capped

re-bar set

Lt. def. $\Delta = 7^{\circ}09'05''$

$D_a = 2^{\circ}$

$R. = 2864.79'$

$T. = 179.02'$

$L. = 357.57'$

C. Nichols
 C. Dill
 B. Simmons
 S. Archer

Oct. 96

23



$7^{\circ}09'05''$
 P.I.
 1A+36.98
 $\frac{5}{8}$ " dia capped
 re-bar set
 $\Delta = 7^{\circ}09'05''$
 $D_a = 2^{\circ}$

R ————— ○ R.R. Spk. Fd.
 1.18' Lt. of Sta. 13+61.89

Per. No.
 12-094-00-00-047

R ————— ○ Small capped iron Fd.
 0.15' Lt. of Sta. 12+02.75

8.44.75
 ○ PK nail Fd.
 0.08' Lt. of Sta. 11+29.82

Kamp - A - Lott

8.44.75
 ○ R.R. Spk. Fd.
 0.07' Lt. of Sta. 10+79.67

R ————— ○ R.R. Spk. Fd.
 10+29.81

Per. No.
 12-094-00-00-049

ECR257

$12^{\circ}25'21.5''$
 P.I.
 5+92.84

9116

Resurvey Part of C.R. 5 & part of C.R. 25
Columbus St. (Zanesfield) North to S.P. 646
Jefferson Twp, Logan Co., Ohio

FB 710

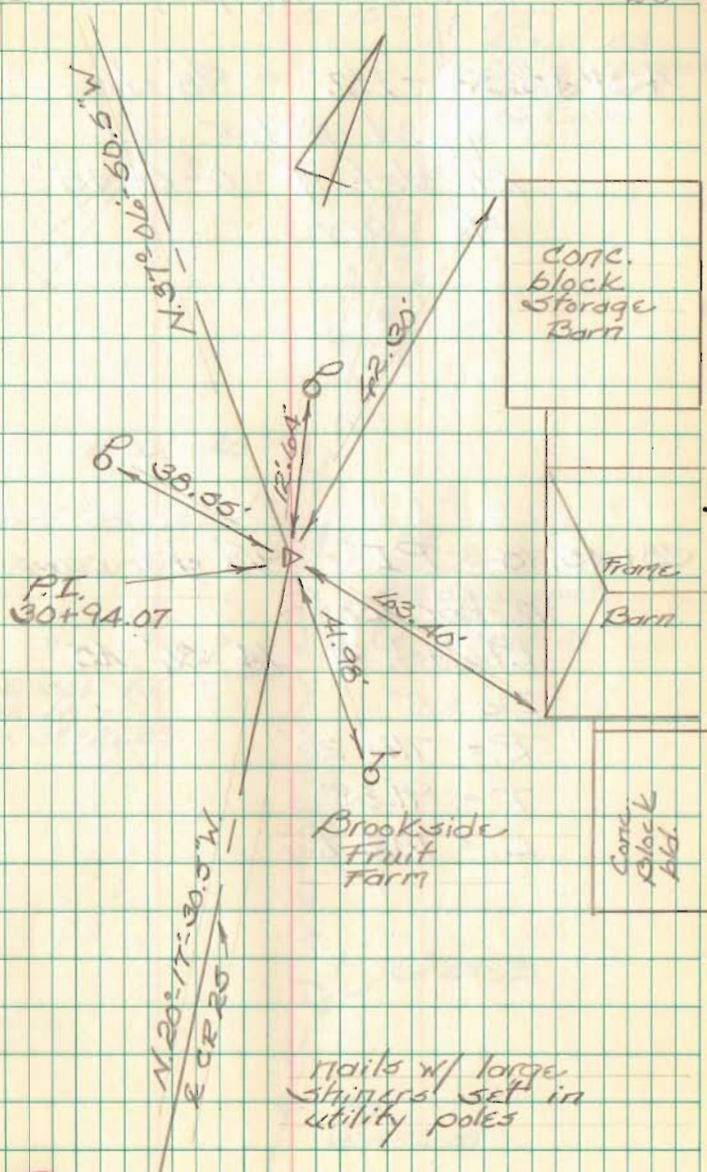
Witnesses to P.I. found at
Sta 30+94.07

30+94.07 - P.I. - 1" ϕ iron Pd. w/
traces of brick (\approx 1' deep)
Lt. def. $\angle = 116^{\circ} 49' 20''$
 $D_a = 8^{\circ}$
 $R. = 714.20'$
 $T. = 105.90'$
 $L. = 210.28'$

C. Nichols
C. Dill
B. Symmons
S. Archer

Oct. 96

25



Resurvey Part of C.R. 5 & Part of C.R. 25
Columbus St. (Ednesfield) North to S.R. 540
Jefferson Twp., Logan Co., Ohio

FB 710

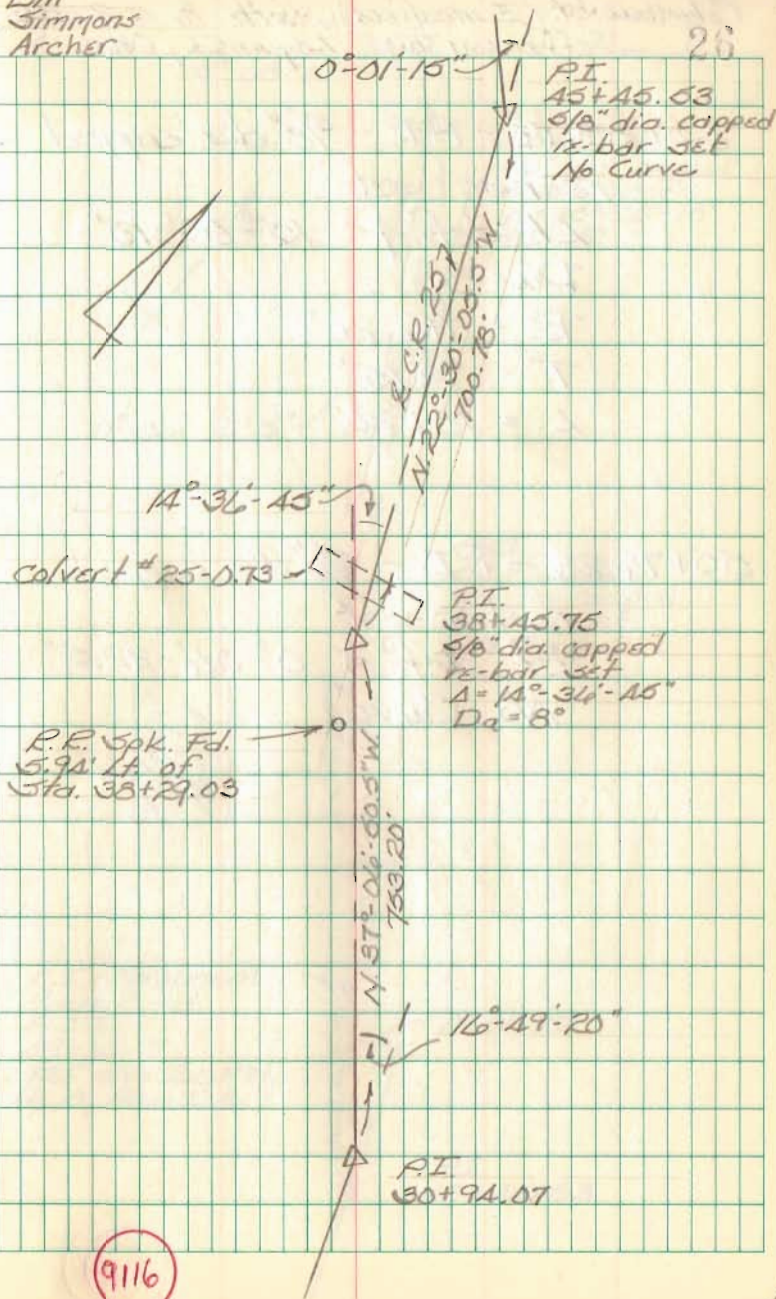
45+45.53 - P.I. - 5/8" dia.
capped re-bar set
Lt. def. $\Delta = 0^{\circ} 01' 15''$
No Curve

38+45.75 - P.I. - 5/8" dia. capped
re-bar set
Pt. def. $\Delta = 14^{\circ} 36' 45''$
 $D_a = 8^{\circ}$
 $R = 716.20'$
 $T = 91.83'$
 $L = 182.66'$

G. Nichols
C. Dill
B. Simmons
S. Archer

Oct. 96

26



9116

Resurvey Part of C.R. 5 & Part of C.R. 25
 Columbus St. (Zanesfield) North to S.E. SAD
 Jefferson Twp., Logan Co., Ohio

FB 710

45+55.18 - P.I. - $\frac{5}{8}$ " dia. capped
 re-bar set

Lt. def. $\Delta = 15^{\circ}08'10''$

$D_a = 8^{\circ}$

$R = 716.20'$

$T = 95.15'$

$L = 189.20'$

55+76.23 - P.I. - $\frac{5}{8}$ " dia. capped
 re-bar set

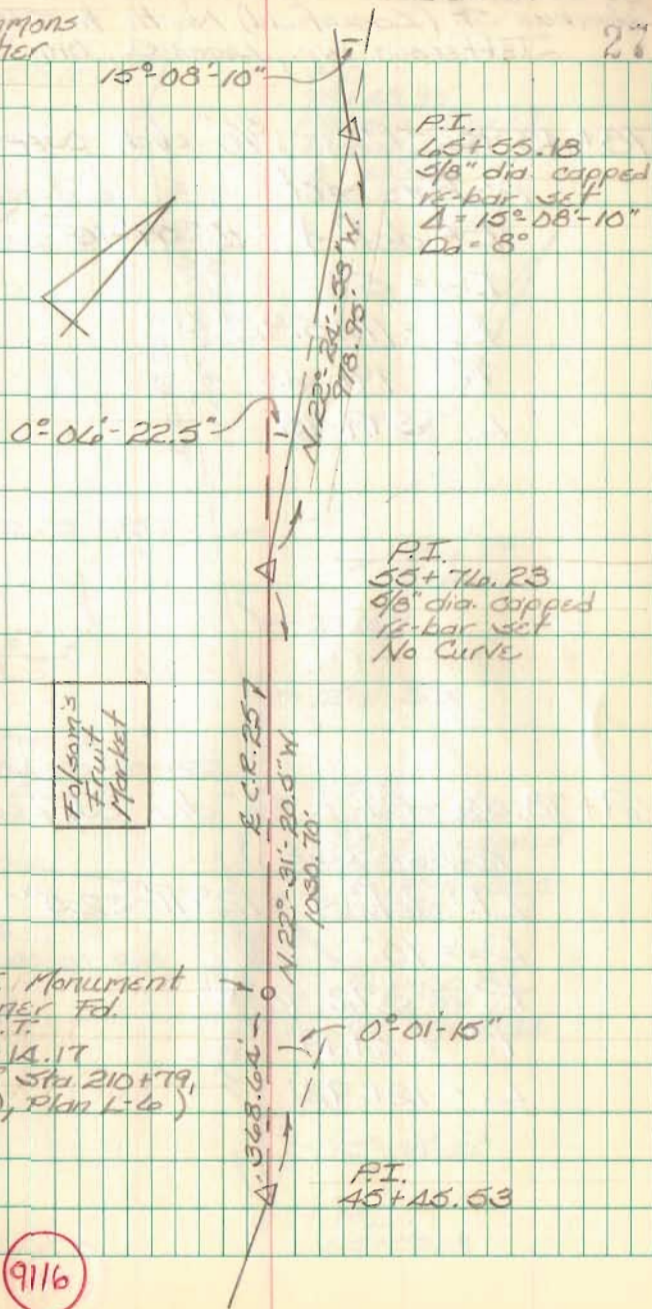
Rt. def. $\Delta = 0^{\circ}06'22.5''$

No Curve

C. Nichols
 C. Dill
 B. Simmons
 S. Archer

Oct. 96

27



Resurvey Part of C.R. 5 & Part of C.R. 25
 Columbus St. (Zanesfield) North to S.R. 640
 Jefferson Twp., Logan Co., Ohio

FB 710

78+43.95 - P.I. - 5/8" dia. capped

re-bar set

Rt. def. $\Delta = 18^{\circ} 59' 15''$

$D\alpha = 5^{\circ}$

$R. = 1145.92'$

$T. = 191.43'$

$L. = 379.75'$

69+78.52 - P.I. - 5/8" dia. capped

re-bar set

Lt. def. $\Delta = 12^{\circ} 11' 32.5''$

$D\alpha = 10^{\circ}$

$R. = 572.96'$

$T. = 61.19'$

$L. = 121.92'$

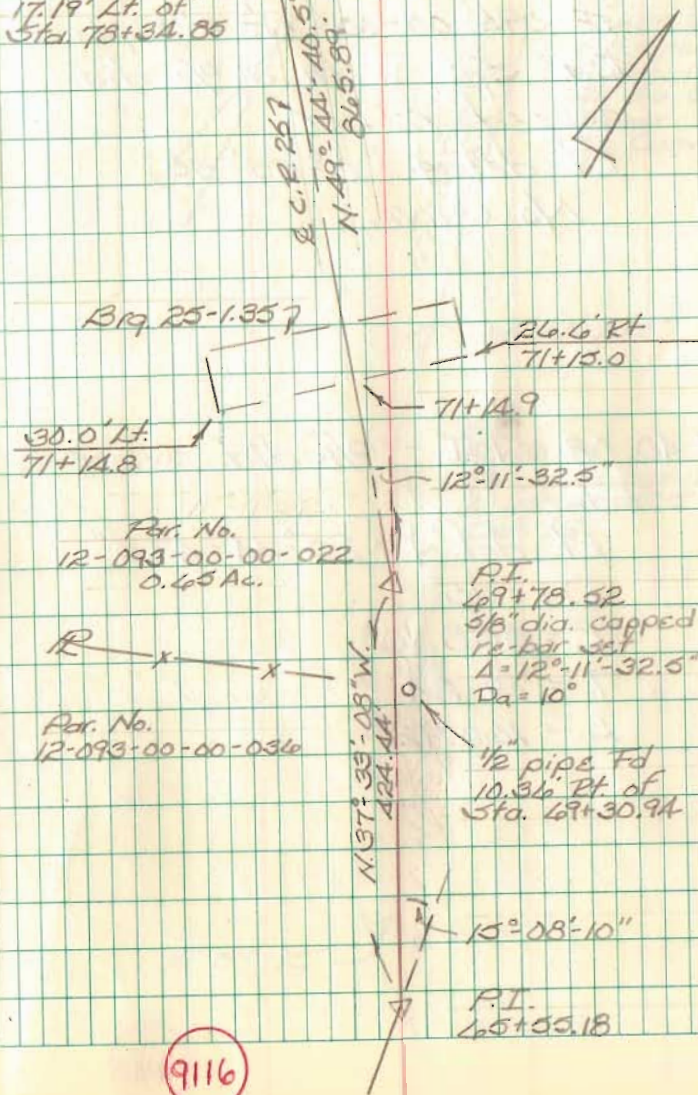
C. Nichols
 C. Dill
 B. Simmons
 S. Archer

Oct. 96

23

5/8" ϕ iron Fd. 0
 17.19' Lt. of
 Sta. 78+34.85

P.I.
 78+43.95
 5/8" dia capped
 re-bar set
 $\Delta = 18^{\circ} 59' 15''$
 $D\alpha = 5^{\circ}$



Par. No.
 12-093-00-00-022
 0.465 Ac.

P.I.
 69+78.52
 5/8" dia. capped
 re-bar set
 $\Delta = 12^{\circ} 11' 32.5''$
 $D\alpha = 10^{\circ}$

Par. No.
 12-093-00-00-036

1/2" pipe Fd
 10.36' Rt. of
 Sta. 69+30.94

P.I.
 65+55.18

9116

Resurvey Part of C.R. 5 & Part of C.R. 25
 Columbus St. (Zanesfield) North to S.R. 540
 Jefferson Twp., Logan Co., Ohio

FB 710

92+88.32 - P.I. - R.R. Spk. Fd. -

S.E. cor. of parcel no.
 12-093-00-00-015 - Replaced
 R.R. Spk. with a $\frac{5}{8}$ " dia.
 capped re-bar.
 Rt. def. $\Delta = 0^{\circ}55'55''$
 No Curve

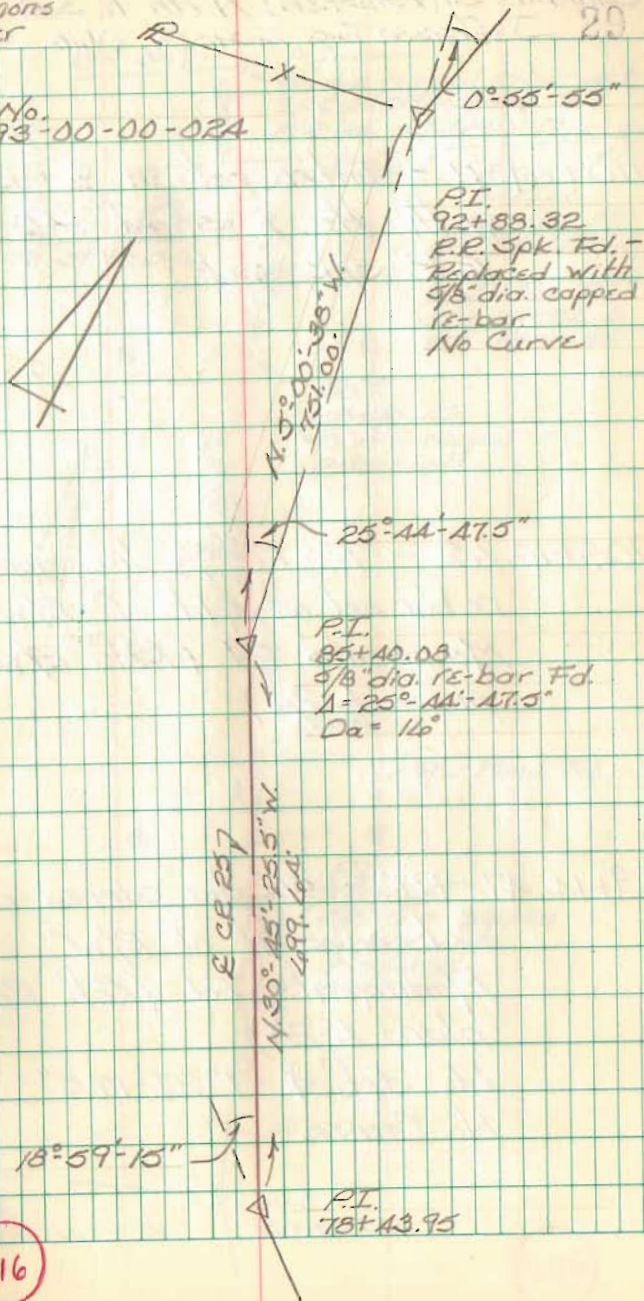
85+40.08 - P.I. - $\frac{5}{8}$ " dia. re-bar
 Fd.

Rt. def. $\Delta = 25^{\circ}44'47.5''$
 $D_a = 110'$
 $R = 358.10'$
 $T = 81.84'$
 $L = 160.92'$

C. Nichols
 C. Dill
 B. Simmons
 S. Archer

Oct. 96

Par. No.
 12-093-00-00-024



Resurvey Part of C.R. 5 & Part of C.R. 25
 Columbus St. (Zanesfield) North to S.R. 540
 Jefferson Twp., Logan Co., Ohio

FB 710

110+46.91 - Intersection of C.R. 25
 with the E. St. Rt. 540 -
 R.R. Spk. Set

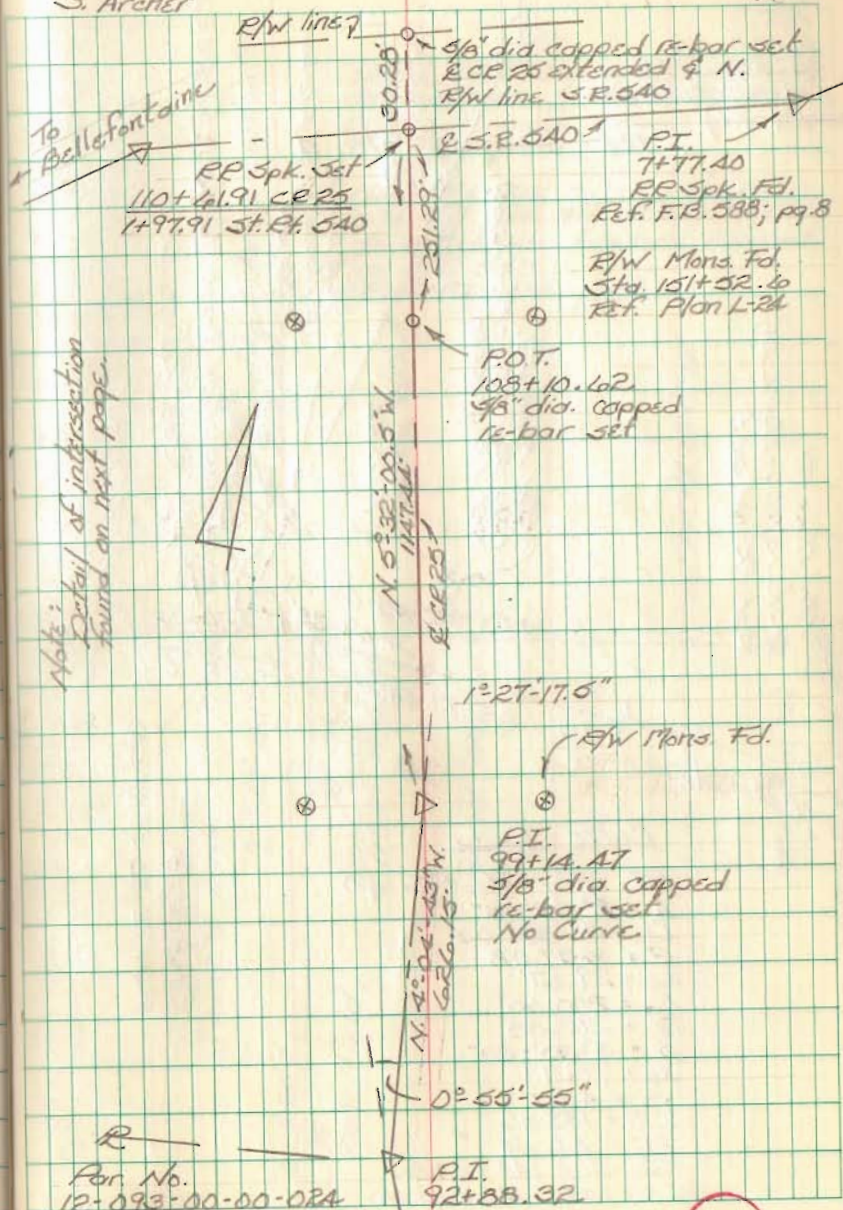
108+10.62 - P.O.T. - 5/8" dia capped
 re-bar set on split of R/W
 Monuments Fd. (Ref. R/W
 plans L-24)

99+14.47 - P.I. - 5/8" dia. capped re-bar
 set on split of R/W
 Monuments Fd. (Ref. R/W
 plans L-24).
 Lt. def. $\Delta = 1^{\circ}27'17.5''$
 No Curve

C. Nichols
 C. Dill
 B. Simmons
 S. Archer

Oct. 96

30



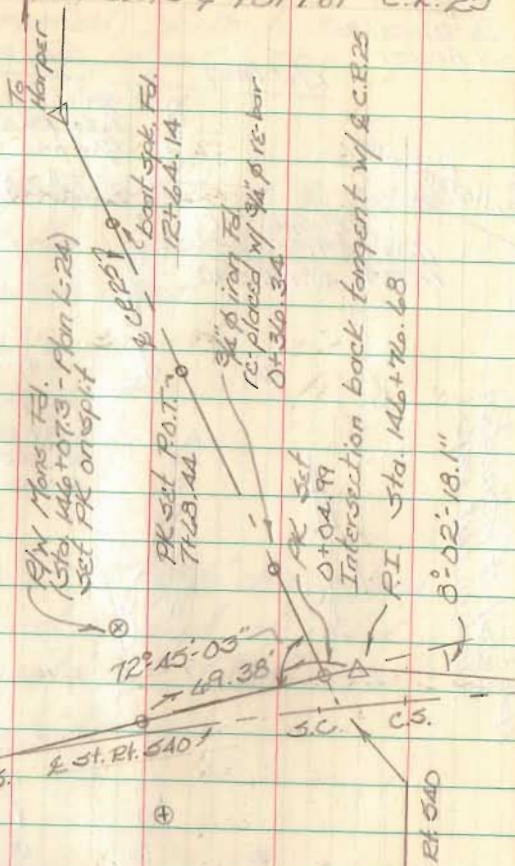
9116

Resurvey Part of C.R. 5 & Part of C.R. 25

FB 710

P.I.
1A+60.60
3/4" ϕ iron Fd.
(1A+62.0 F.R. 575
Pg. 29)

R/W Mon. Fd.
(Sta. 137+00 - Plan L-24)
Set PK on split



Curve Data

P.I. Sta. 146+76.68
 $A = 8^{\circ}-02'-18''$
 $D_a = 3^{\circ}-30'-00''$
 $R = 1437.02$
 $L_c = 29.67'$
 $L_s = 200.00'$
 $T_s = 213.08'$
 $\phi = 3^{\circ}-30'-00''$
 $X_c = 199.93'$
 $Y_c = 4.07'$
 $L.T. = 133.36'$
 $S.T. = 146.48'$
 T.S. Sta. 144+61.60
 S.C. Sta. 146+72.36
 C.S. Sta. 146+91.27
 S.T. Sta. 148+91.27

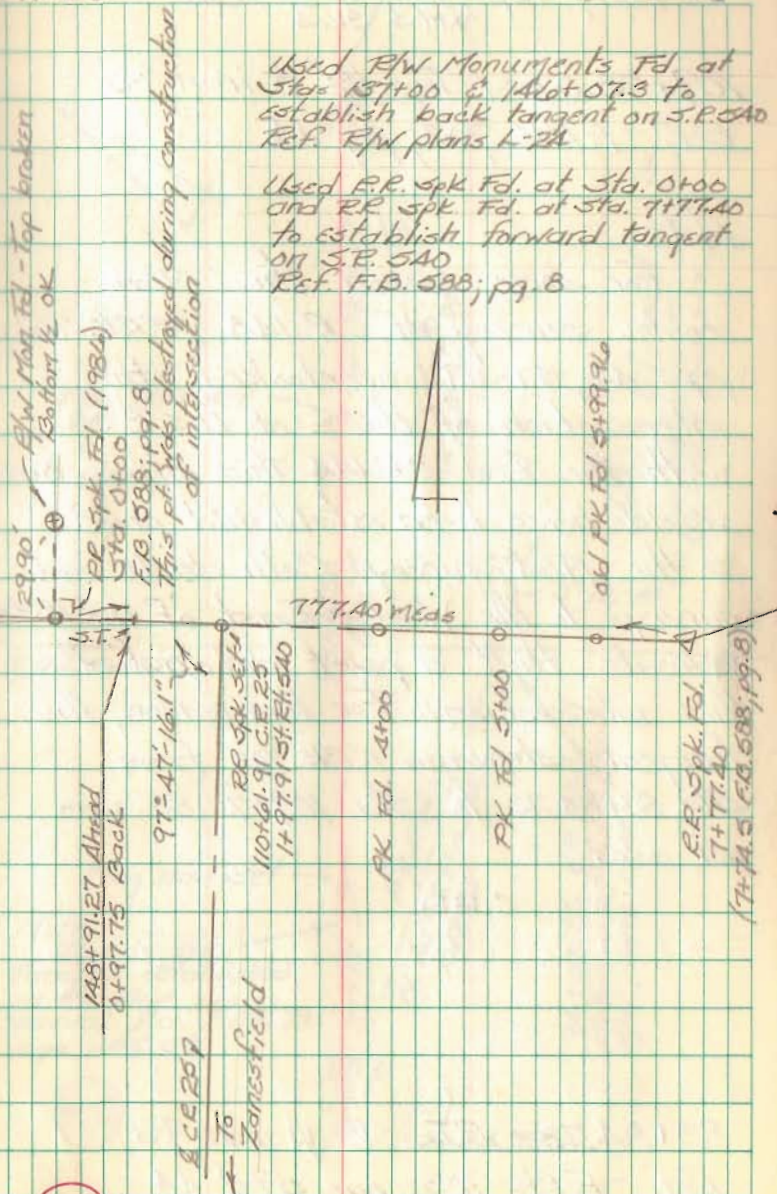
OF 000E25
146+72.36 St. Rt. 540

C.C. Nichols
Dill
Simmons
Archer

Oct. 96

Used R/W Monuments Fd. at
Stas. 137+00 & 146+07.3 to
establish back tangent on S.P. 540
Ref. R/W plans L-24

Used P.R. spk Fd. at Sta. 0+00
and RR spk Fd. at Sta. 7+77.40
to establish forward tangent
on S.P. 540
Ref. F.R. 588; pg. 8



9116