

8/20/01 3:20 01-02 JLL

Lee Surveying and Mapping Co., Inc.

Land Surveys • Topography • Subdivisions • Construction Layout

117 N. Madriver St.
Bellefontaine OH 43311



Phone: (937) 593-7335
Fax: (937) 593-7444

CHARBEL TRACT A 1.033 ACRES

Lying in Virginia Military Survey 3439, Jefferson Township, Logan County, Ohio.

Being out of the George Y. Charbel and Deborah L. Charbel original 15.08 acre tract as deeded and described in Official Record 240, Page 286 of the Logan County Records of Deeds and being more particularly described as follows:

Beginning at a P.K. nail found at Tangent Station 146+71.69 (Field Book 710, Page 31) which is the intersection of the center-line of County Highway 25 and the Tangent Line of Ohio Route 540.

THENCE, with the center-line of Ohio Route 540 (60 feet wide), S 84°-18'-55" W, a distance of 1076.08 feet to a railroad spike found at Station 135+89 of the Logan County Engineer's plan L-24.

THENCE, with the center-line of Ohio Route 540 (60 feet wide), S 84°-33'-12" W, a distance of 647.83 feet to a railroad spike set at the TRUE POINT OF BEGINNING.

THENCE, S 4°-26'-48" E, a distance of 300.05 feet to a 5/8 inch iron rod set, passing a 5/8 inch iron rod set at 30.01 feet.

THENCE, S 84°-33'-12" W, a distance of 150.02 feet to a 5/8 inch iron rod set.

THENCE, with the east line of the Jean Wendling 10.0 acre tract (Vol. 388, Pg. 108, Tract Two), N 4°-26'-48" W, a distance of 300.05 feet to a railroad spike set, passing a 5/8 inch iron rod set at 270.04 feet.

THENCE, with the center-line of Ohio Route 540, N 84°-33'-12" E, a distance of 150.02 feet to the point of beginning.

Containing 1.033 acres of which 0.130 acre is within the highway right-of-way.

The basis for bearings is the center-line of Ohio Route 540 being S 84°-33'-12" W, west of Station 135+89, and all other bearings are from angles and distances measured in a field survey by Lee Surveying and Mapping Co., Inc. on February 5, 2001.

Description prepared by:

A handwritten signature in black ink, appearing to read 'J. Lee', is written over the typed name and title.

Jeffrey I. Lee
Professional Surveyor 6359
February 12, 2001



ORIGINAL STAMP IN GREEN L-601



Lee Surveying and Mapping Co., Inc.

Land Surveys • Topography • Subdivisions • Construction Layout

117 N. Madriver St.
Bellefontaine OH 43311



Phone: (937) 593-7335
Fax: (937) 593-7444

CHARBEL TRACT B 1.033 ACRES

Lying in Virginia Military Survey 3439, Jefferson Township, Logan County, Ohio.

Being out of the George Y. Charbel and Deborah L. Charbel original 15.08 acre tract as deeded and described in Official Record 240, Page 286 of the Logan County Records of Deeds and being more particularly described as follows:

Beginning at a P.K. nail found at Tangent Station 146 + 71.69 (Field Book 710, Page 31) which is the intersection of the center-line of County Highway 25 and the Tangent Line of Ohio Route 540.

THENCE, with the center-line of Ohio Route 540 (60 feet wide), S 84°-18'-55" W, a distance of 1076.08 feet to a railroad spike found at Station 135 + 89 of the Logan County Engineer's plan L-24.

THENCE, with the center-line of Ohio Route 540 (60 feet wide), S 84°-33'-12" W, a distance of 497.81 feet to a railroad spike set at the TRUE POINT OF BEGINNING.

THENCE, S 4°-26'-48" E, a distance of 300.05 feet to a 5/8 inch iron rod set, passing a 5/8 inch iron rod set at 30.01 feet.

THENCE, S 84°-33'-12" W, a distance of 150.02 feet to a 5/8 inch iron rod set.


THENCE, N 4°-26'-48" W, a distance of 300.05 feet to a railroad spike set, passing a 5/8 inch iron rod set at 270.04 feet.

THENCE, with the center-line of Ohio Route 540, N 84°-33'-12" E, a distance of 150.02 feet to the point of beginning.

Containing 1.033 acres of which 0.130 acre is within the highway right-of-way.

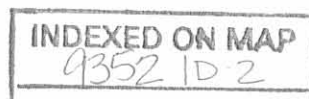
The basis for bearings is the center-line of Ohio Route 540 being S 84°-33'-12" W, west of Station 135 + 89, and all other bearings are from angles and distances measured in a field survey by Lee Surveying and Mapping Co., Inc. on February 5, 2001.

Description prepared by:


Jeffrey J. Lee
Professional Surveyor 6359
February 12, 2001



ORIGINAL STAMP IN GREEN L-601



Lee Surveying and Mapping Co., Inc.

Land Surveys • Topography • Subdivisions • Construction Layout

117 N. Madriver St.
Bellefontaine OH 43311



Phone: (937) 593-7335
Fax: (937) 593-7444

CHARBEL TRACT C 1.033 ACRES

Lying in Virginia Military Survey 3439, Jefferson Township, Logan County, Ohio.

Being out of the George Y. Charbel and Deborah L. Charbel original 15.08 acre tract as deeded and described in Official Record 240, Page 286 of the Logan County Records of Deeds and being more particularly described as follows:

Beginning at a P.K. nail found at Tangent Station 146 + 71.69 (Field Book 710, Page 31) which is the intersection of the center-line of County Highway 25 and the Tangent Line of Ohio Route 540.

THENCE, with the center-line of Ohio Route 540 (60 feet wide), S 84°-18'-55" W, a distance of 1076.08 feet to a railroad spike found at Station 135 + 89 of the Logan County Engineer's plan L-24.

THENCE, with the center-line of Ohio Route 540 (60 feet wide), S 84°-33'-12" W, a distance of 347.79 feet to a railroad spike set at the TRUE POINT OF BEGINNING.

THENCE, S 4°-26'-48" E, a distance of 300.05 feet to a 5/8 inch iron rod set, passing a 5/8 inch iron rod set at 30.01 feet.

THENCE, S 84°-33'-12" W, a distance of 150.02 feet to a 5/8 inch iron rod set.

THENCE, N 4°-26'-48" W, a distance of 300.05 feet to a railroad spike set, passing a 5/8 inch iron rod set at 270.04 feet.

THENCE, with the center-line of Ohio Route 540, N 84°-33'-12" E, a distance of 150.02 feet to the point of beginning.

Containing 1.033 acres of which 0.130 acre is within the highway right-of-way.

The basis for bearings is the center-line of Ohio Route 540 being S 84°-33'-12" W, west of Station 135 + 89, and all other bearings are from angles and distances measured in a field survey by Lee Surveying and Mapping Co., Inc. on February 5, 2001.

Description prepared by:

A handwritten signature in black ink, appearing to read 'J. Lee', is written over the typed name and title.

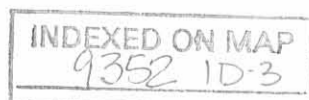
Jeffrey I. Lee
Professional Surveyor 6359

February 12, 2001



ORIGINAL STAMP IN GREEN

L-601



Lee Surveying and Mapping Co., Inc.

Land Surveys • Topography • Subdivisions • Construction Layout

117 N. Madriver St.
Bellefontaine OH 43311



Phone: (937) 593-7335
Fax: (937) 593-7444

CHARBEL TRACT D 1.033 ACRES

Lying in Virginia Military Survey 3439, Jefferson Township, Logan County, Ohio.

Being out of the George Y. Charbel and Deborah L. Charbel original 15.08 acre tract as deeded and described in Official Record 240, Page 286 of the Logan County Records of Deeds and being more particularly described as follows:

Beginning at a P.K. nail found at Tangent Station 146 + 71.69 (Field Book 710, Page 31) which is the intersection of the center-line of County Highway 25 and the Tangent Line of Ohio Route 540.

THENCE, with the center-line of Ohio Route 540 (60 feet wide), S 84°-18'-55" W, a distance of 1076.08 feet to a railroad spike found at Station 135 + 89 of the Logan County Engineer's plan L-24.

THENCE, with the center-line of Ohio Route 540 (60 feet wide), S 84°-33'-12" W, a distance of 197.77 feet to a railroad spike set at the TRUE POINT OF BEGINNING.

THENCE, S 4°-26'-48" E, a distance of 300.05 feet to a 5/8 inch iron rod set, passing a 5/8 inch iron rod set at 30.01 feet.

THENCE, S 84°-33'-12" W, a distance of 150.02 feet to a 5/8 inch iron rod set.

THENCE, N 4°-26'-48" W, a distance of 300.05 feet to a railroad spike set, passing a 5/8 inch iron rod set at 270.04 feet.

THENCE, with the center-line of Ohio Route 540, N 84°-33'-12" E, a distance of 150.02 feet to the point of beginning.

Containing 1.033 acres of which 0.130 acre is within the highway right-of-way.

The basis for bearings is the center-line of Ohio Route 540 being S 84°-33'-12" W, west of Station 135 + 89, and all other bearings are from angles and distances measured in a field survey by Lee Surveying and Mapping Co., Inc. on February 5, 2001.

Description prepared by:

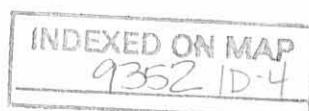
A handwritten signature in black ink, appearing to read 'Jeffrey I. Lee', is written over a faint circular stamp.

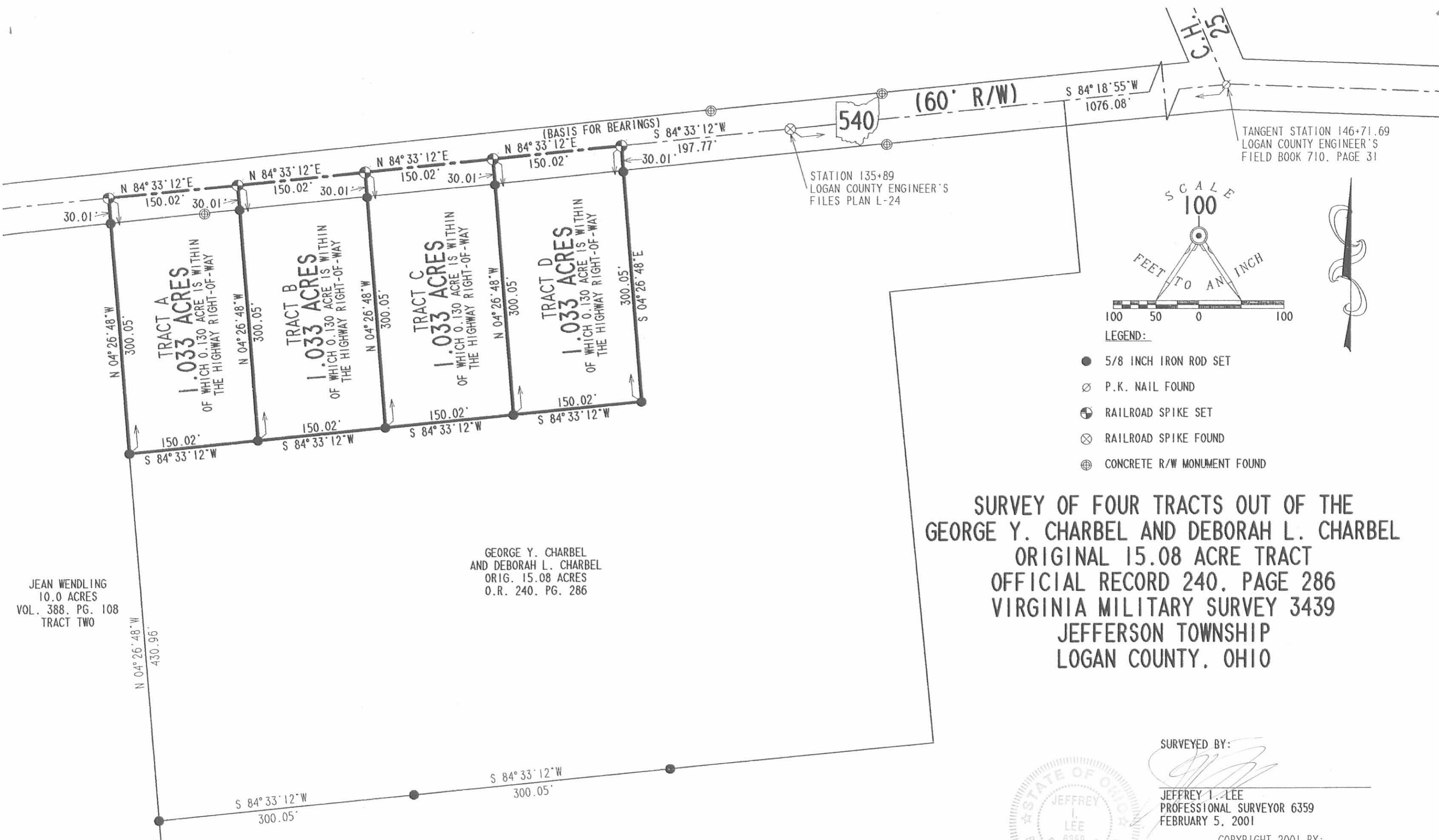
Jeffrey I. Lee
Professional Surveyor 6359
February 12, 2001



ORIGINAL STAMP IN GREEN

L-601





**SURVEY OF FOUR TRACTS OUT OF THE
 GEORGE Y. CHARBEL AND DEBORAH L. CHARBEL
 ORIGINAL 15.08 ACRE TRACT
 OFFICIAL RECORD 240, PAGE 286
 VIRGINIA MILITARY SURVEY 3439
 JEFFERSON TOWNSHIP
 LOGAN COUNTY, OHIO**



SURVEYED BY:

 JEFFREY I. LEE
 PROFESSIONAL SURVEYOR 6359
 FEBRUARY 5, 2001

COPYRIGHT 2001 BY:
LEE SURVEYING & MAPPING CO., INC.
 117 North Madriver Street
 BELLEFONTAINE, OHIO 43311
 (937) 593-7335

2 WORKING DAYS
BEFORE YOU DIG
 CALL TOLL FREE **800-362-2764**
 OHIO UTILITIES PROTECTION SERVICE.

INDEXED ON MAP
 9352 1P

ORIGINAL STAMP IN GREEN

D-395 WOODWRD L-601-3