

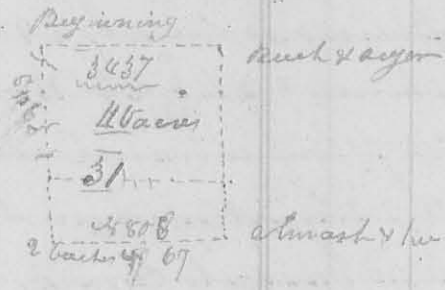
19 4th Mo. (April) 27th 1824

Survey 8031

19

9553

Surveyed 20 acres of land for Stephen Harmon, beginning at 2 small white walnuts and hickory in the west line of William Colborn's survey 803437 thence with said line S10° E 93 poles, crossing a branch at 11 poles one at 52 poles & one at 80 poles to 2 bushes south west corner to said survey thence 88° W 69 poles to a small elm, ash and white oak in the south line of said survey, thence 8° W 93 poles (crossing 2 small branches to a buck and sugar tree in the south line of Isaac Zane's land; thence with said line S80° W 69 poles (crossing 2 small branches) to the beginning containing 20 acres in the south west corner of said survey 803437



Peter Harmon
Josee Beams J. G. B.

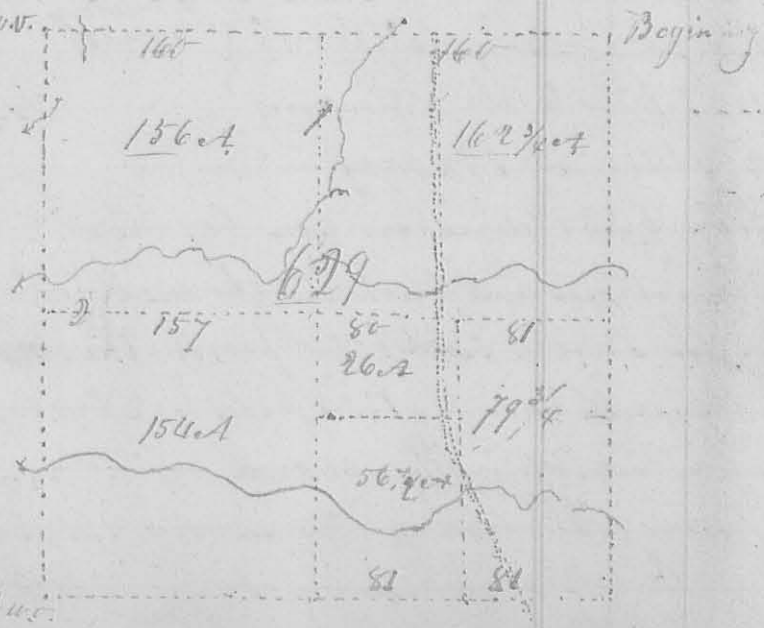
Ja. Mc. Harmon
Surveyor L. C.

7th Mo. (July) 13th 1824

Survey 8032c

9569

Surveyed and divided section 34 in Town 4 Range 14 Col. for Samuel & Sewell & others beginning at the E. E. corner of said sec. at a stone, the original corner an elm 18 inches in diam. N61° E 20 links dist., a red oak 28 inches in diam. S64° W 21 links dist. (this tree is cut down), thence between trees S34° E 33 1/2 degree westerly variation from the original line, through Bellefontaine, 320 poles to the E. W. corner of said sec. original corner a white oak 20 inches in diam. S65° E 13 links dist. (this tree is now cut down), another white oak 14 inches in diam. S63° W 23 links dist. thence south, crossing a branch at 60 poles and one at 254 poles 316 poles to the S. W. corner of this section, a white oak 16 inches in diam. 85° E 53 links dist., a white oak 16 inches in diam. S61° W 13 links dist. original corner, thence east 31 1/2 poles to the S. E. corner, a red oak 12 inches in diam. 277° E 47 links dist., a red oak 15 inches in diam. S. E. 20

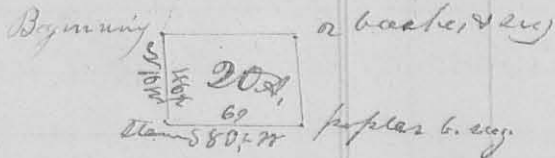


9588

3rd Mo. March, 28th 1828 Survey No. 100 79

Surveyed for Isaac Lane

Beginning at a small white oak and stone in the south line of William Cochran's survey n^o 3407 on Mac River and C. W. corner to Daniel Butters land; thence with the line between Butters and Lane N 10 W 46 1/2 poles to a stone thence S 80 1/2 W 69 poles to a large poplar tree, & sugar tree in the west



line of the original survey thence with said line N 10 E

cropping 2 small branches, 46 1/2 poles to 2 beeches and C. W. corner to the original survey - thence N 80 E 69 poles to the beginning containing 20 acres in the SW corner of Cochran's said survey

C. W. corner

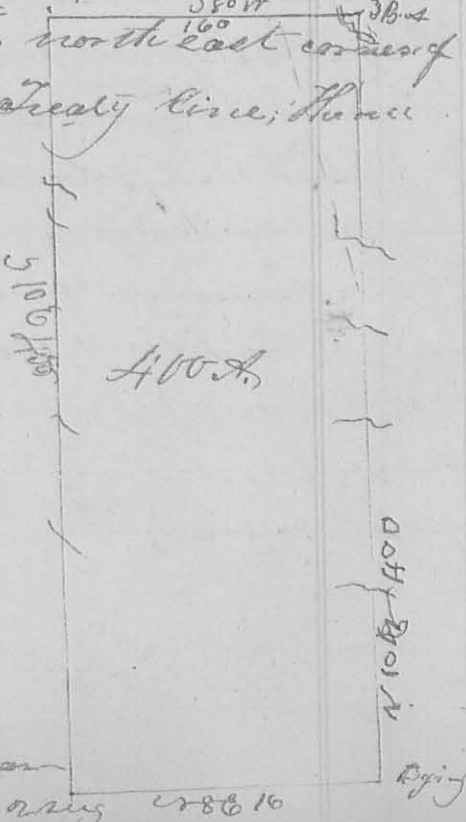
8129

4th Mo. April, 8th 1828 Survey No. 101

Surveyed for - M. Kay of Virginia at the request of Jose H. Garwood -

Beginning at an ash, beech, white oak and hickory, south east corner to George McCredie's survey n^o 3314 on Mill Creek - thence N 10 E cropping a branch at 102 poles, another at 140 poles, another at 236, a road from Garwood's mill to Sandlesby at 240 poles, a branch at 280 poles, Mill Creek at 380,

400 poles to an ash and 2 beeches north east corner of said survey, in the Greenville Treaty line; thence with said line S 80 W cropping Mill-Creek at 10 poles, said road at 30 poles, 160 poles to a stake in the south side of fallen timber - thence S 10 E, cropping several small branches 400 poles to 2 small sugar trees hickory and ash in the south line of the survey - thence N 80 E cropping a branch 160 poles to the beginning containing 400 acres off the east side of said survey



Jose Garwood, Benjamin Pickens, John Garwood marks 400 acres 1828 16