

FB 712

Relocated T.R. 180  
Jefferson Twp.  
Logan Co., Ohio

19+36.74 - P.I. - Fd.  $\frac{5}{8}$ " dia.  
capped iron bar "Geeslin"  
Ref: 1997 Geeslin Survey Index  
No. 9135

14+39.25 Ahead - Set R.R. Spike on  
4+00.00 Back  
split of R/W Morris. Fd. - Fits  
line from stone fd. on T.R. 55  
to  $\frac{5}{8}$ " iron bar fd. at Sta. 19+36.74

5+07.60 - T.S. - Set R.R. spike  
7+57.60 - S.C. - Set Mag nail  
7+87.13 - C.S. - Set Mag nail  
10+37.13 - S.T. - Set R.R. Spike

19+32.10 - P.O.T. - Fd. PK nail -  
Intersect of the two O.D.O.T.  
surveys.

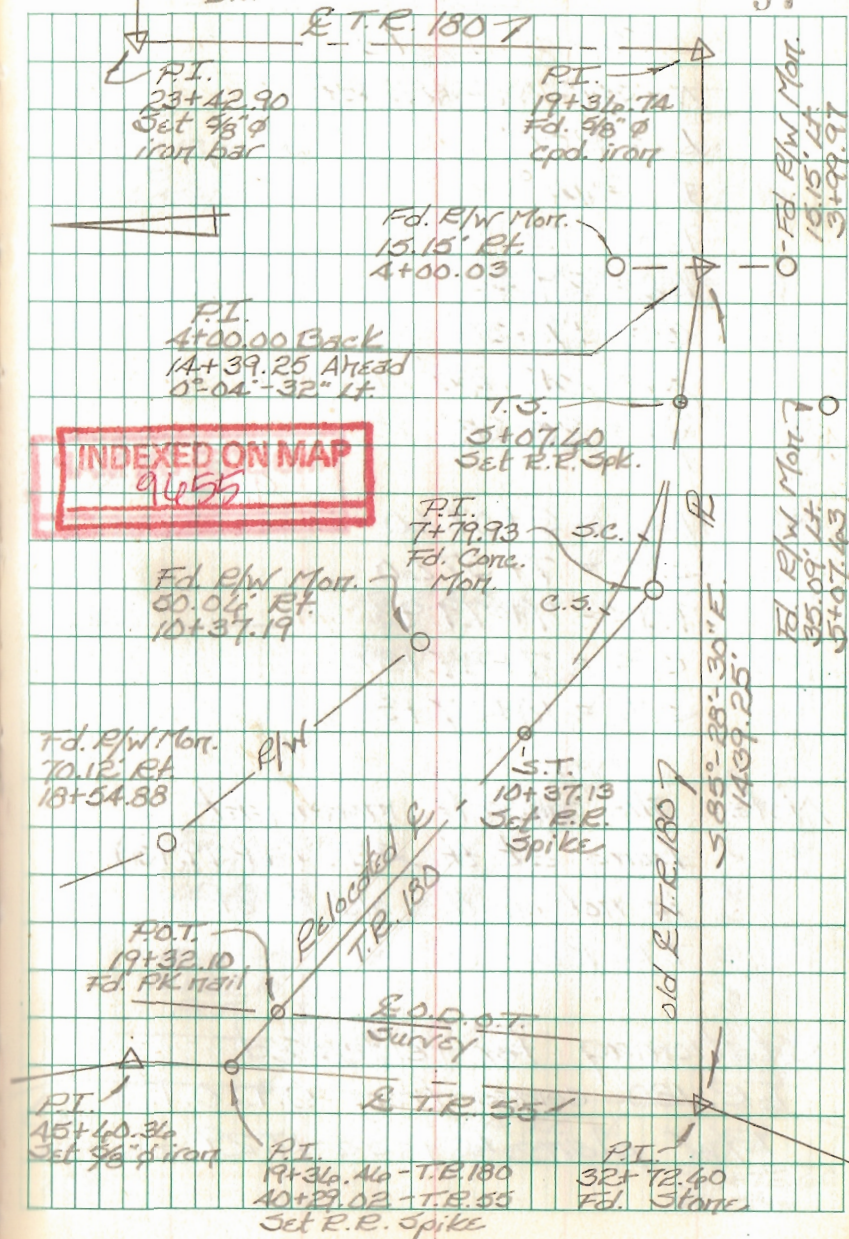
19+36.46 - P.I. - Set R.R. Spike -  
Intersection & T.R. 55 w/  
& relocated T.R. 180.

See next pg. for curve data

Simmons  
Dappert  
Dill

2010

57





FB 712

Relocated T.R. 180  
Jefferson Twp.  
Logan Co., Ohio

Curve Data

$\Delta = 39^{\circ} 07' 48''$  Rt.

$L_s = 250'$

$D_a = 14^{\circ}$

$T_s = 272.33'$

$L_c = 29.50'$

$\theta = 17^{\circ} 30'$

$X_c = 247.48'$

$Y_c = 25.28'$

T.S. = 5+07.60

S.C. = 7+57.60

P.I. = 7+79.93

C.S. = 7+87.13

S.T. = 10+37.13

Note: the concrete monument  
found at the P.I. (7+79.93)  
is not on the old & of  
T.R. 180.

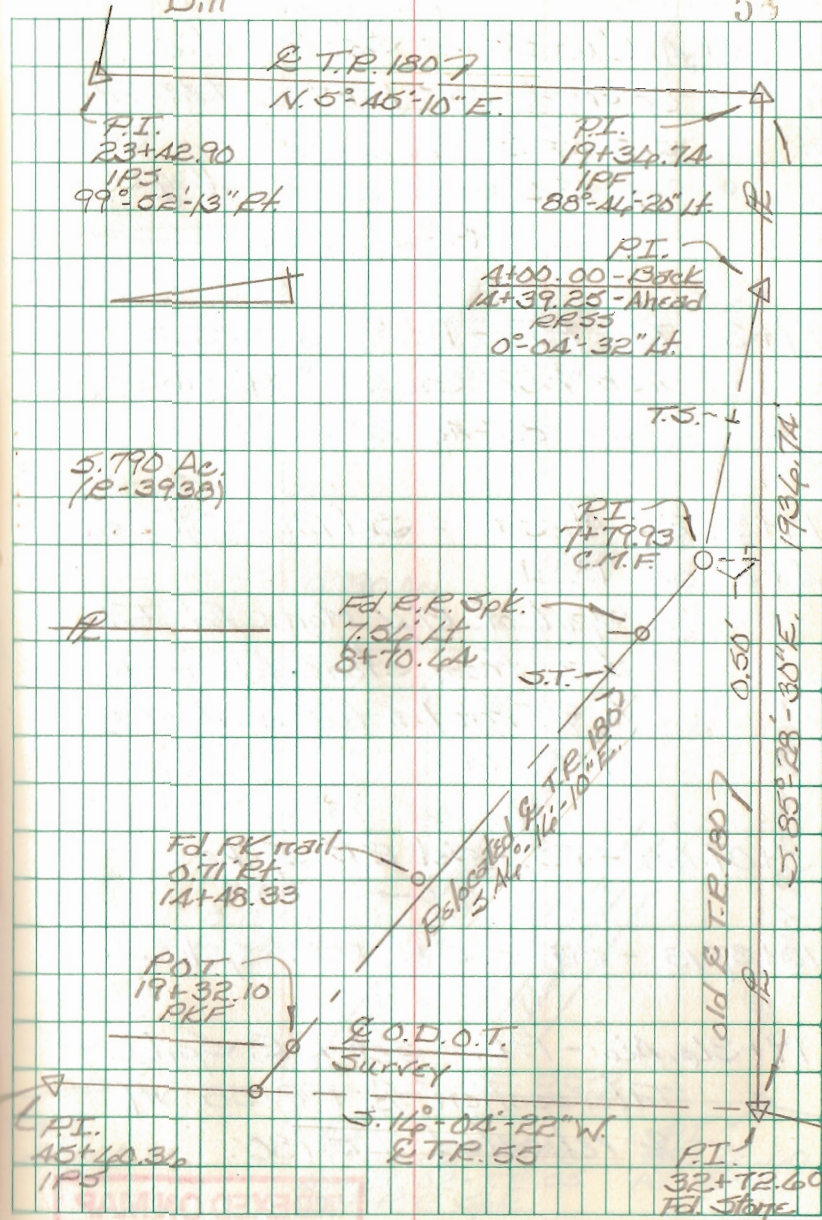
Stationing for relocated  
T.R. 180 comes from O.D.O.T.'s  
P/W plan Log-33-17.29

INDEXED ON MAP  
9455

Simmons  
Dappert  
Dill

2010

58





FB 712

Relocated T.R. 180

Jefferson Twp.

Logan Co., Ohio

23+42.90 - P.I. - Set  $\frac{5}{8}$ " dia.

Capped iron bar on tangent  
shown in 1997 Geeslin Survey  
of 124.544 Ac. tract (R-9135)

99° 52' 13" Rt.

19+36.74 - P.I. - Fd.  $\frac{5}{8}$ " dia. capped  
iron bar "Geeslin" (R-9135)

88° 46' 20" Lt.

14+39.25 Ahead - Set R.R. Spike on  
A+00.00 Back

Split of R/W. Mon. fd. Fits  
line from stone fd. on T.R. 55  
to  $\frac{5}{8}$ " iron bar found at sta.  
19+36.74

5+07.60 - T.S. - Set R.R. Spike

10+37.13 - S.T. - Set R.R. Spike

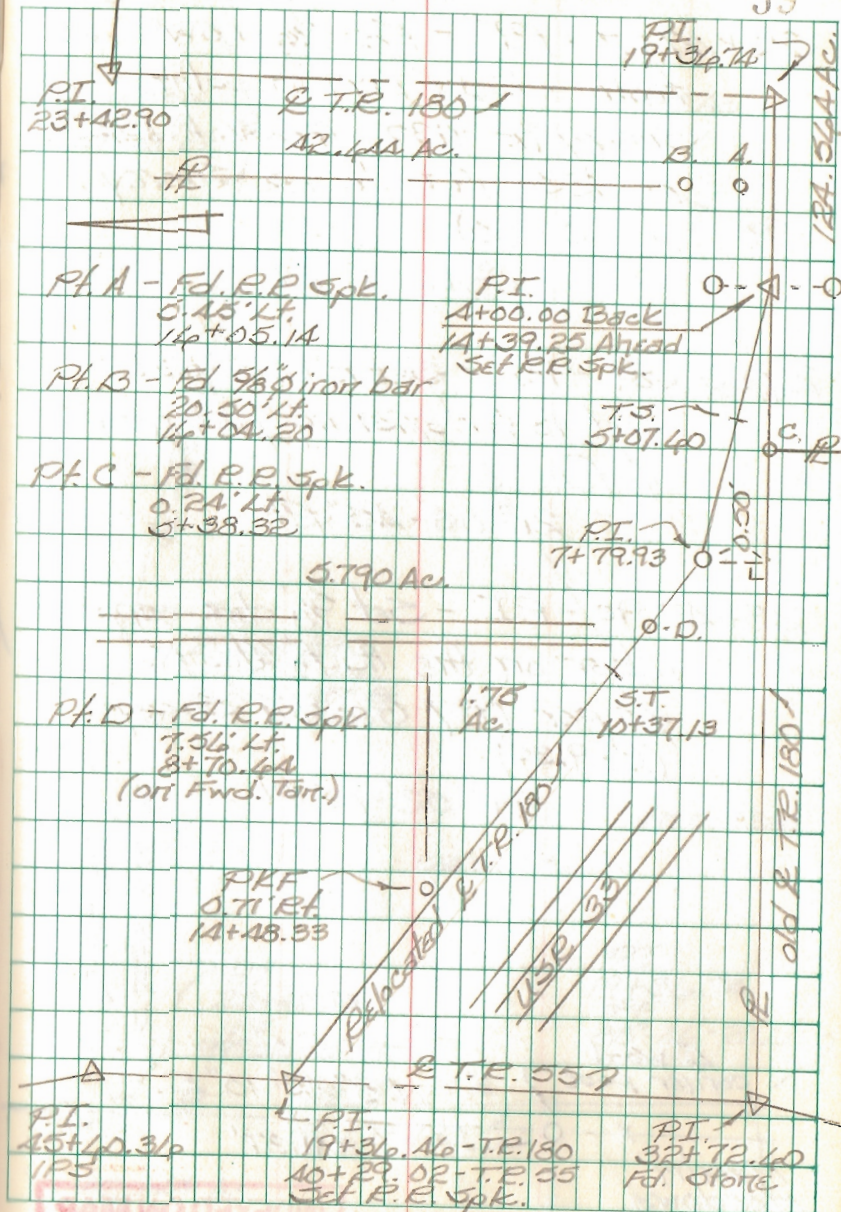
19+36.46 - P.I. - Set R.R. Spike -  
Intersection  $\angle$  T.R. 55 w/  
 $\angle$  relocated T.R. 180.

INDEXED ON MAP  
9155

Simmons  
Dappert  
Dill

2010

59





FB 712

T.R. 180  
Jefferson Twp.  
Logan Co., Ohio

35+47.27 - P.I. - Fd. Harrow  
tooth - Ref: 1997 Geeslin  
Survey (R-9135) - O.K.S. F.B.K. #5  
pg. 23; 1977 K&S Survey  
(R-5240)

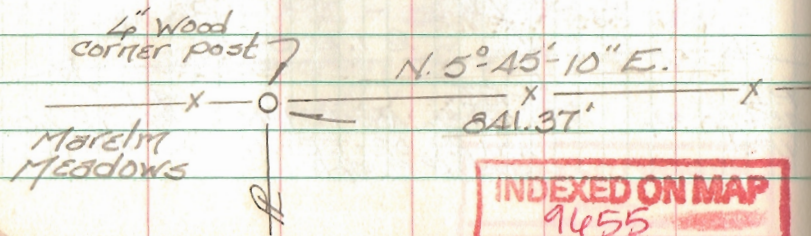
2°-17'-19" Rt.

29+38.89 - P.I. - Set R.R. Spike -  
Set to fit existing pavement  
& fences

21°-03'-45" Rt.

23+42.90 - P.I. - Set 5/8" dia. capped  
rebar on the R to the N.  
as per 1997 Geeslin Survey  
(R-9135)

99°-52'-13" Rt.

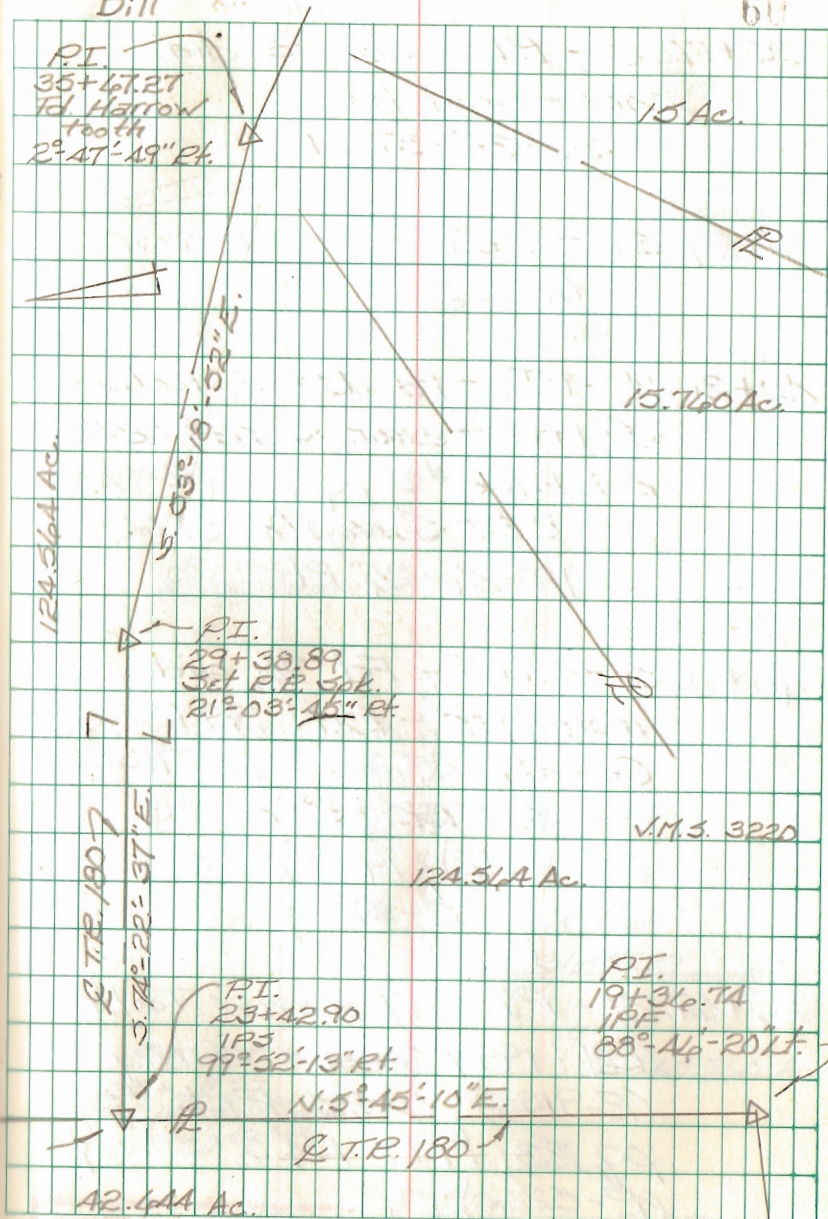


INDEXED ON MAP  
9455

Simmons  
Dappert  
Dill

2010

60





FB 712

T.R. 180  
Jefferson Twp.  
Logan Co., Ohio

42+17.02 - P.I. - Set  $\frac{3}{8}$ " dia.  
capped iron bar.  
36°-36'-57" Lt.

41+29.54 - P.O.T. - Fd. Harrow  
Tooth.

40+81.24 - P.I. - Fd. Harrow Tooth -  
Ref: 1997 Geeslin Survey (R-9135);  
O.K.S. F.B.K. #5, pg. 23 (R-2A42);  
1977 K&S Survey (R-5260).  
12°-26'-26" Rt.

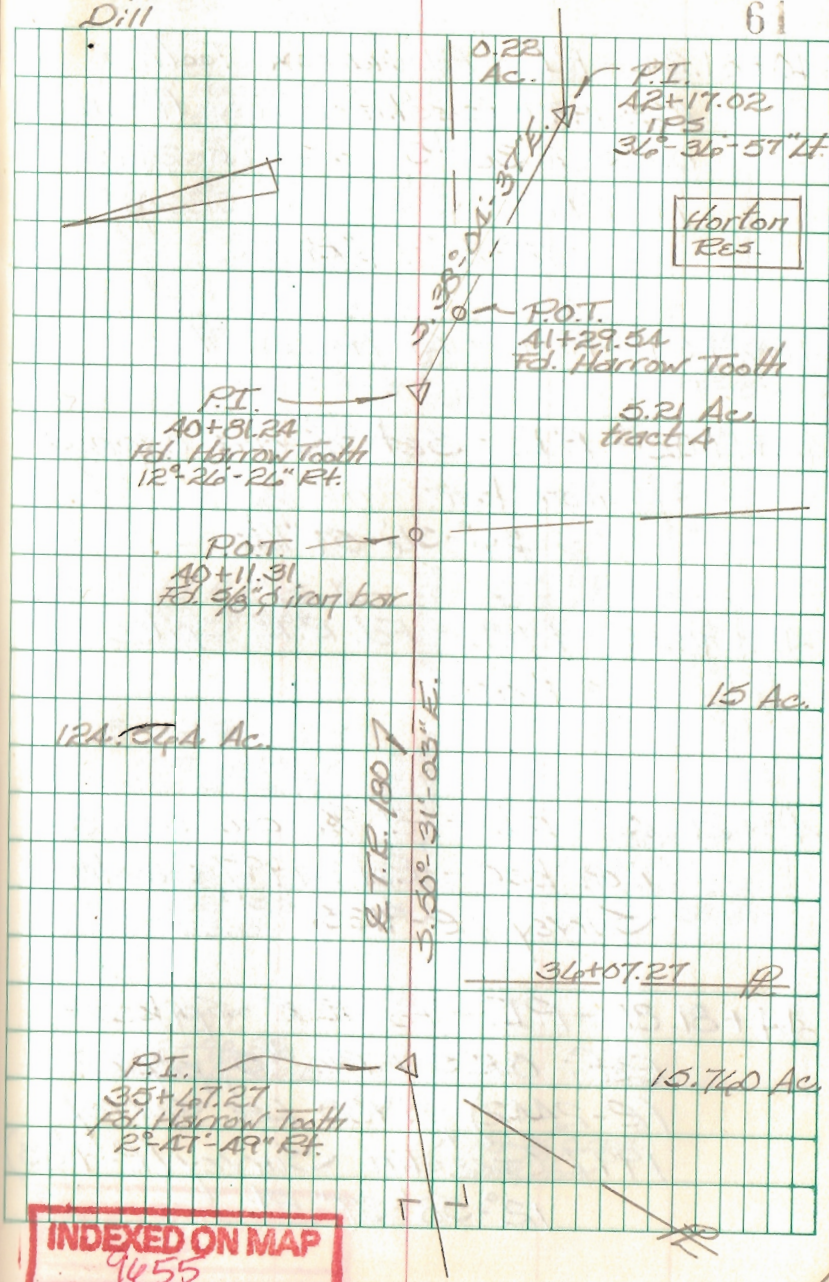
40+11.31 - P.O.T. - Fd.  $\frac{3}{8}$ " dia.  
iron bar - Ref: 1997  
Geeslin Survey (R-9135);  
O.K.S. F.B.K. #5 pg. 23  
(R-2A42). 1977 K&S  
Survey (R-5260).

35+47.27 - P.I. - Fd. Harrow Tooth -  
Ref: 1997 Geeslin Survey  
(R-9135). O.K.S. F.B.K. #5,  
pg. 23; 1977 K&S Survey  
(R-5260)  
2°-47'-49" Rt.

Simmors  
Dappert  
Dill

2010

61





FB 712

T.R. 180  
Jefferson Twp.  
Logan Co., Ohio

40+81.2A - P.I. - Fd. Harrow Tooth -  
Ref: 1997 Geeslin Survey (R-9135)  
O.K.S. F.Bk. #5, pg. 23 (R-2442);  
1977 K&S Survey (R-5260).  
12°-26'-24" Rt.

41+29.5A - P.O.T. - Fd. Harrow Tooth

42+17.02 - P.I. - Set 5/8" dia. capped  
iron bar.  
34°-36'-57" Lt.

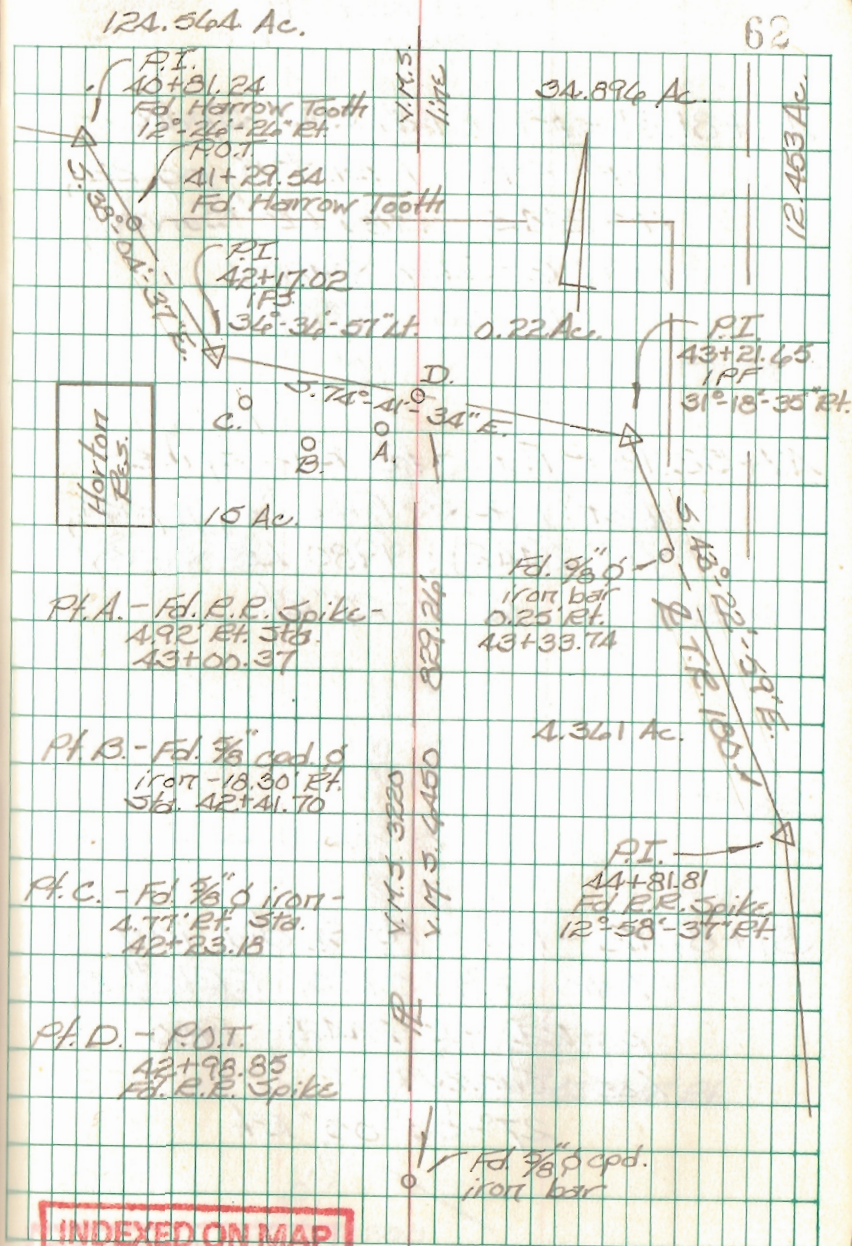
42+98.85 - P.O.T. - Fd. R.R. Spike  
≈ 1' deep

43+21.45 - P.I. - Fd. 5/8" dia. capped  
iron bar - Ref: 1997 Geeslin  
Survey (R-9135).

44+81.81 - P.I. - Fd. R.R. Spike -  
Ref: O.K.S. F.Bk. #5, pg. 22  
(R-2442); 1980 Lee Survey;  
1997 Geeslin Survey (R-9135)  
12°-58'-37" Rt.

2010

62





FB 712

T.R. 180  
Jefferson Twp.  
Logan Co., Ohio

44+81.81 - P.I. - Fd. R.R. Spike -  
Ref: O.K.S. F.B.K. #5, pg. 22,  
(R-2442); 1980 Lee Survey;  
1997 Geeslin Survey  
12°-58'-37" Rt.

47+52.13 - P.I. - Fd. R.R. Spike -  
Ref: O.K.S. F.B.K. #5, pg. 22,  
(R-2442); 1980 Lee Survey  
12°-11'-27" Rt.

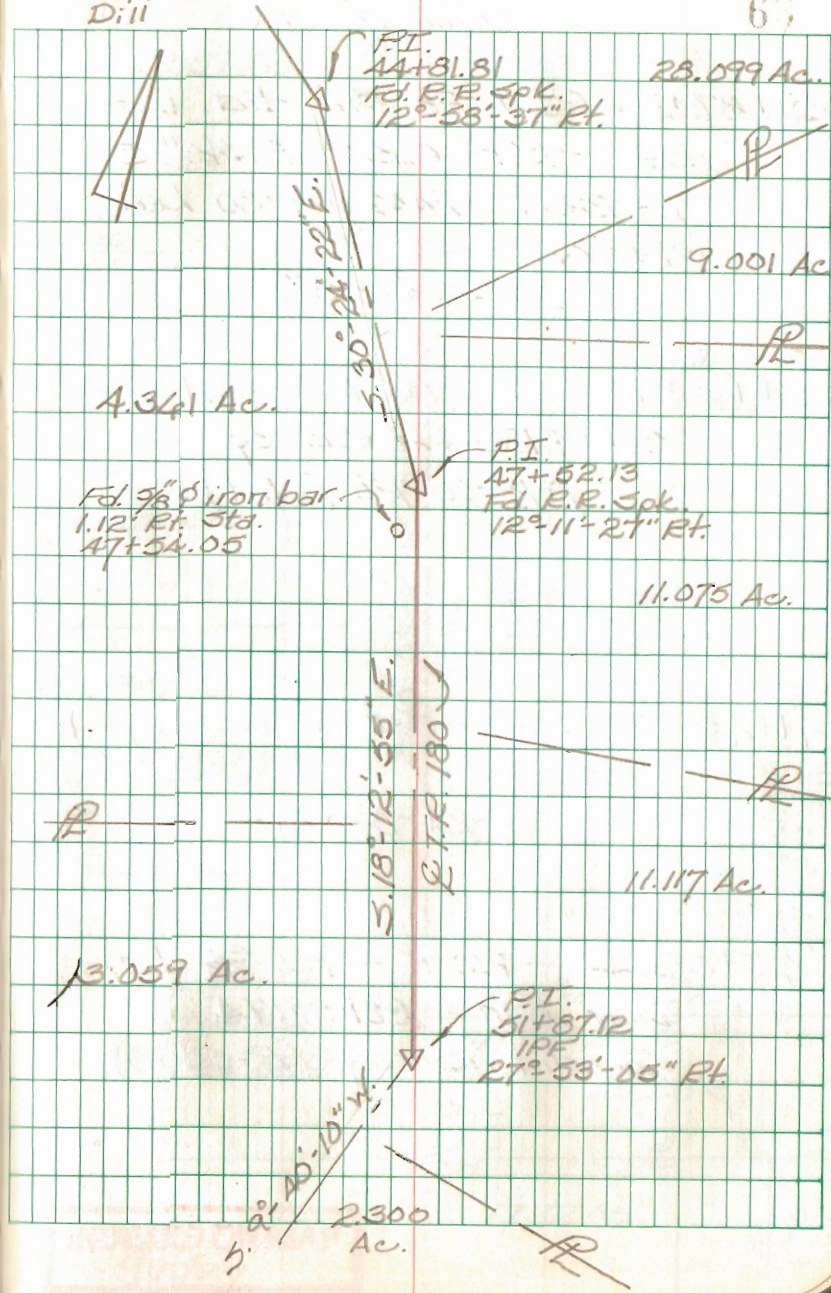
51+87.12 - P.I. - Fd. 5/8" dia. iron  
bar - Ref: O.K.S. F.B.K. #5,  
pg. 22, (R-2442); 1980  
Lee Survey  
27°-53'-05" Rt.

INDEXED ON MAP  
9455

Simmons  
Dappert  
Dill

2010

67





FB 712

T.R. 180  
Jefferson Twp.  
Logan Co., Ohio

51+87.12 - P.I. - Fd.  $\frac{3}{8}$ " dia. iron  
bar - Ref: O.K.S. F.Bk. #5,  
pg. 22, (R-2442); 1980 Lee  
Survey  
 $27^{\circ}53'-05"$  Rt.

54+34.18 - P.I. - Fd. R.R. Spike -  
Ref: 1980 Lee Survey  
 $1^{\circ}18'-00"$  Rt. (plat)

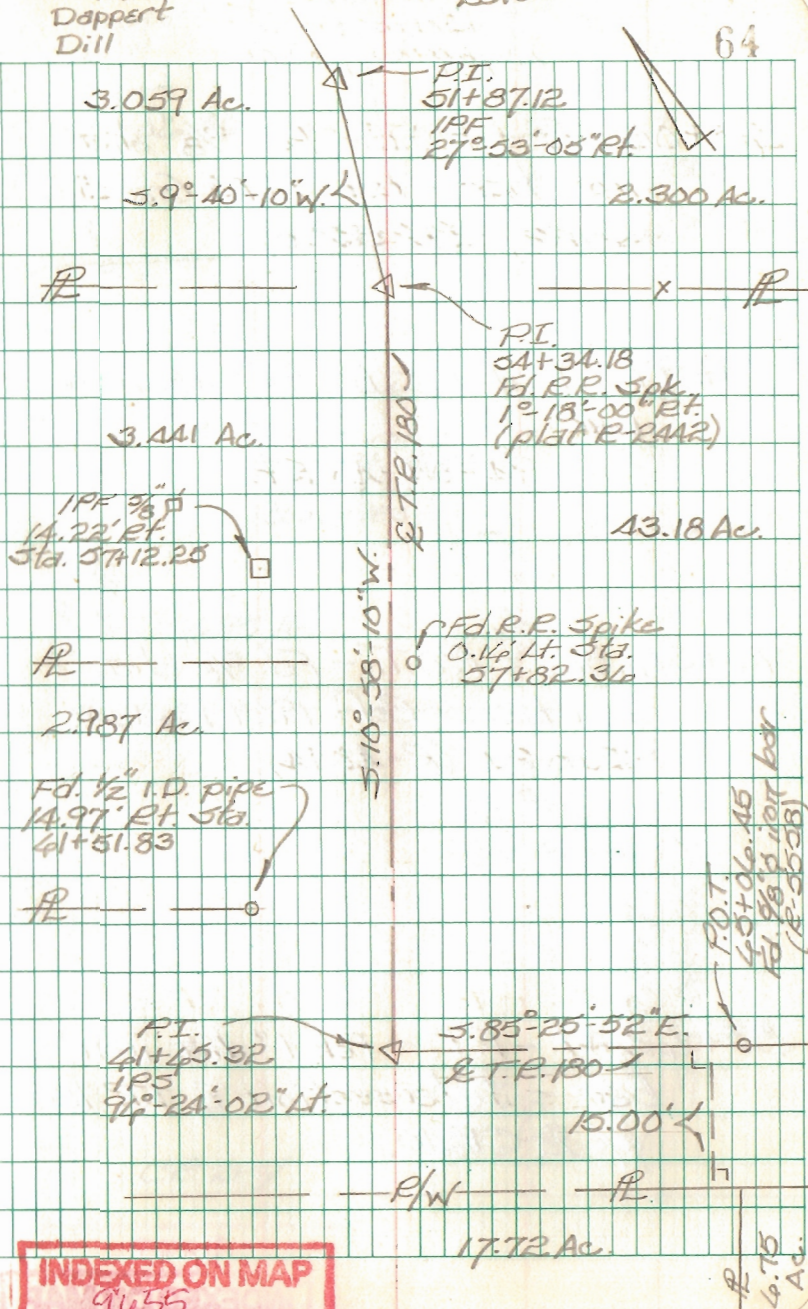
41+45.32 - P.I. - Set  $\frac{3}{8}$ " dia. capped  
iron bar  
 $94^{\circ}24'-02"$  Lt.

45+06.45 - P.O.T. - Fd.  $\frac{3}{8}$ " dia.  
iron bar - Ref: 1974  
Geeslin Survey (P-5558).

Simmons  
Dappert  
Dill

2010

64



INDEXED ON MAP  
9055



FB 712

T.R. 180  
Jefferson Twp.  
Logan Co., Ohio

45+06.45 - P.O.T. - Fd.  $\frac{3}{8}$ " dia.  
iron bar - Ref: 1974 Geeslin  
Survey (R-5538).

70+97.27 - P.I. - Fd.  $\frac{3}{8}$ " dia. iron  
bar  
94°-04'-48" Rt.

76+36.82 - P.O.T. - Fd.  $\frac{3}{8}$ " dia.  
iron bar - Ref: 1967 Dodson  
Survey (R-A3AA).

83+42.47 - P.I. - Fd. 1" dia. iron  
bar - Intersection & T.R. 180  
w/ & C.R. 10.

9655

INDEXED ON MAP

Simmons  
Dappert  
Dill

2010

65

