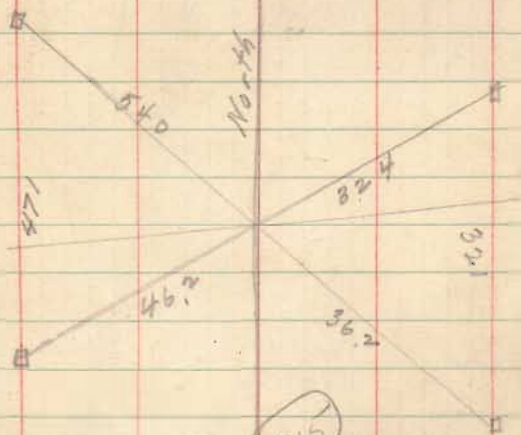


Survey Lake to school Dist
 Witnesses South Corp. Line
 I B & Ludlow South Line Corp.
 708' south of line between Bridget
 Kelley and John Goldsmith
 Telephone pole N of E 28.5
 maple 6" West 72.1
 S. end top West Coping Stone bridge
 N 28.4



134

915

INDEXED ON MAP



Surrey Lake Tp. Sch. Cont.

Note Line thru Center WS Hamilton chimney
 Line hit 7 1/2' West of Corner at SW
 corner porch on Harpsters house
 and through Saltonized broader house.

Line east is 5.2' North of NE Cor of ^{house} ~~lot~~
 iron bar placed on township line + 15'
 South of Corp. Line extended

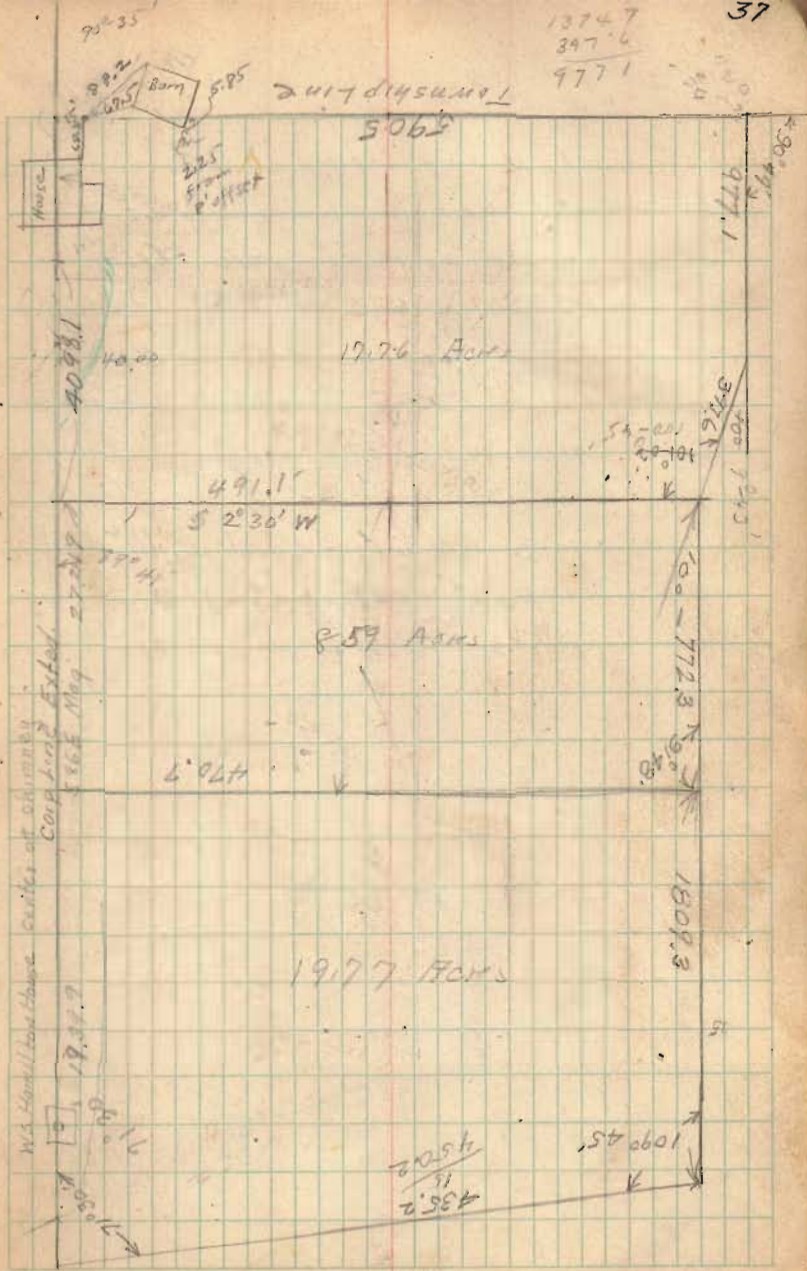
Witness: NE Cor barn 88.7
 NW Cor barn 47.5
 SE Cor House 68.8

(See Book 589 Page 22)

134

915

INDEXED ON MAP



Used iron pin Corner Lot 939 + 955
 in Eastern Ave and Cooper st
 Measured on Eastern Ave. from
 Lot 939 68.5 to NE corner
 set stake; also 35 for wire
 turned $83^{\circ}45'$ as called for by deeds
 and struck 38.5 East of Ewing fence
 and 33 West of line of fence
 posts Marquis + Kendall, ^{line} moved
 stake 2' West making the distances
 as shown on opposite page.

(134) (915)

INDEXED ON MAP

