

Sours Surrey Lake Twp.
V.M.S. 3317

- A Temporary Point.
- B Iron Placed.
- C Post.
- D Post.
- E Iron Placed.
- F Iron Placed.

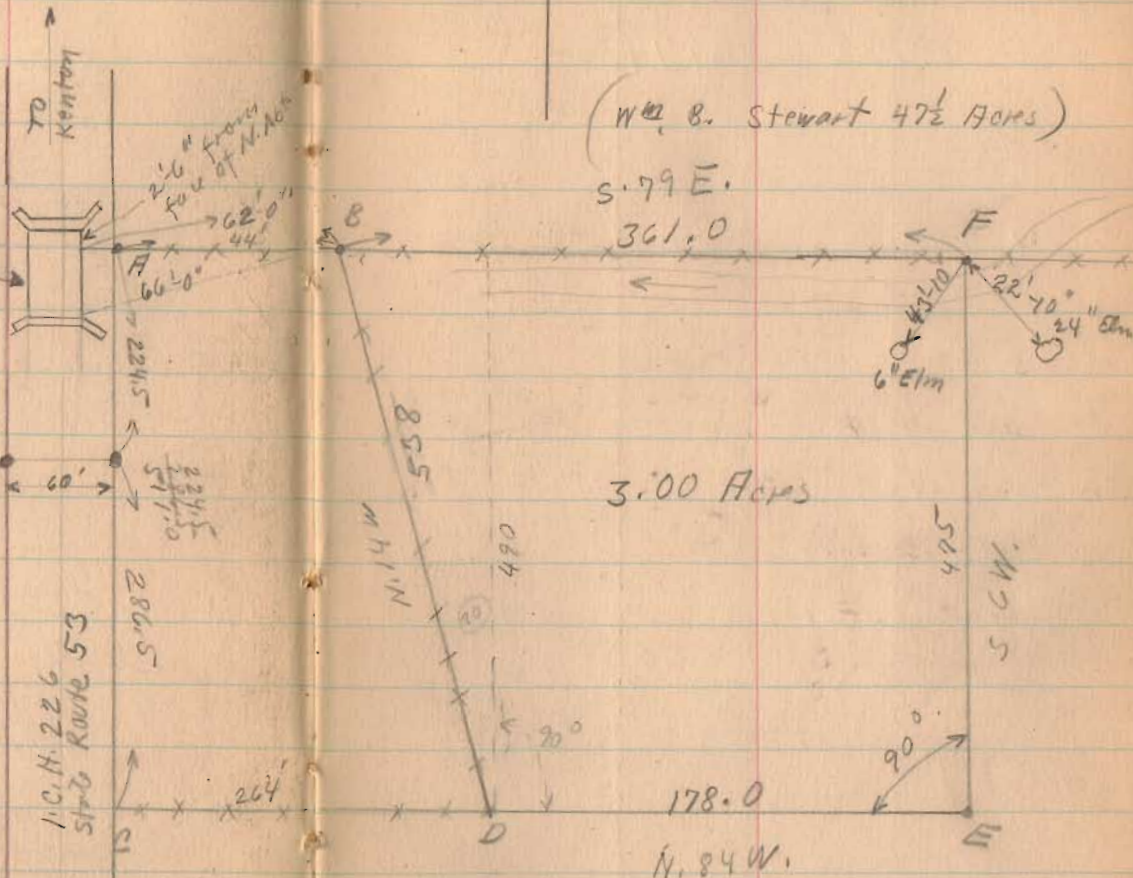
Produced fence
line C to E.

Fence line ABF Not
very straight.

1/4 Sec. 226 N. 13 E } See Book
ABF S. 79 E } D Page 5

Concrete Bridge
L 0-53-10.1

Concrete Pier
Posts No 46
PLAN L-18



May -16-1931 25
Windy
Bridge
Wright
Bill Wright.

see Book 55 Page 22
Surrey 1907
see Book D Page 5

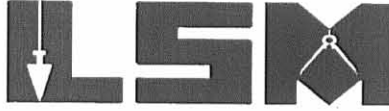
1238
INDEXED ON MAP

1 Recd 12-12-03 of JLB

Lee Surveying and Mapping Co., Inc.

Land Surveys • Topography • Subdivisions • Construction Layout

117 N. Madriver St.
Bellefontaine OH 43311



Phone: (937) 593-7335
Fax: (937) 593-7444

LYNS EASEMENT

Lying in Virginia Military Survey 3317, Lake Township, Logan County, Ohio.

Being in the Lyns Development, Inc., an Ohio Corporation, 1.08 acre tract and 0.75 acre tract as deeded and described in Official Record 88, Page 670, Tracts III and I of the Logan County Records of Deed and being more particularly described as follows:

Beginning at a point 30 feet right of the center-line at Station 46 + 13.50 Logan County Engineer's Plan L-18, Page 1 on the east right-of-way of U.S. Route 68 (60 feet wide), also being the southwest corner of the Dwight V. Skidmore 0.25 acre tract (O.R. 553, Pg. 950).

THENCE, with the right-of-way of U.S. Route 68, N 15°-21'-00"E, a distance of 113.99 feet to a point at the northwest corner of the said 0.25 acre tract, at the TRUE POINT OF BEGINNING.

THENCE, continuing with the right-of-way of U.S. Route 68, N 15°-21'-00"E, a distance of 257.00 feet to a point.

THENCE, S 74°-39'-00"E, a distance of 50.00 feet to a point.

THENCE, S 15°-21'-00"W, a distance of 25.00 feet to a point.

THENCE, N 74°-39'-00"W, a distance of 30.00 feet to a point.

THENCE, S 15°-21'-00"W, a distance of 232.00 feet to a point.

THENCE, with the north line of the of the said 0.25 acre tract, N 74°-39'-00"W, a distance of 20.00 feet to the point of beginning.

The basis for bearings is the east right-of-way of U.S. Route 68 being N 15°-21'-00"E, and all other bearings are from angles and distances measured in a field survey by Lee Surveying and Mapping Co., Inc. on November 21, 2003.

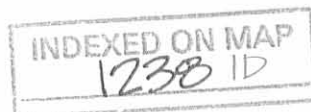
Description prepared by:

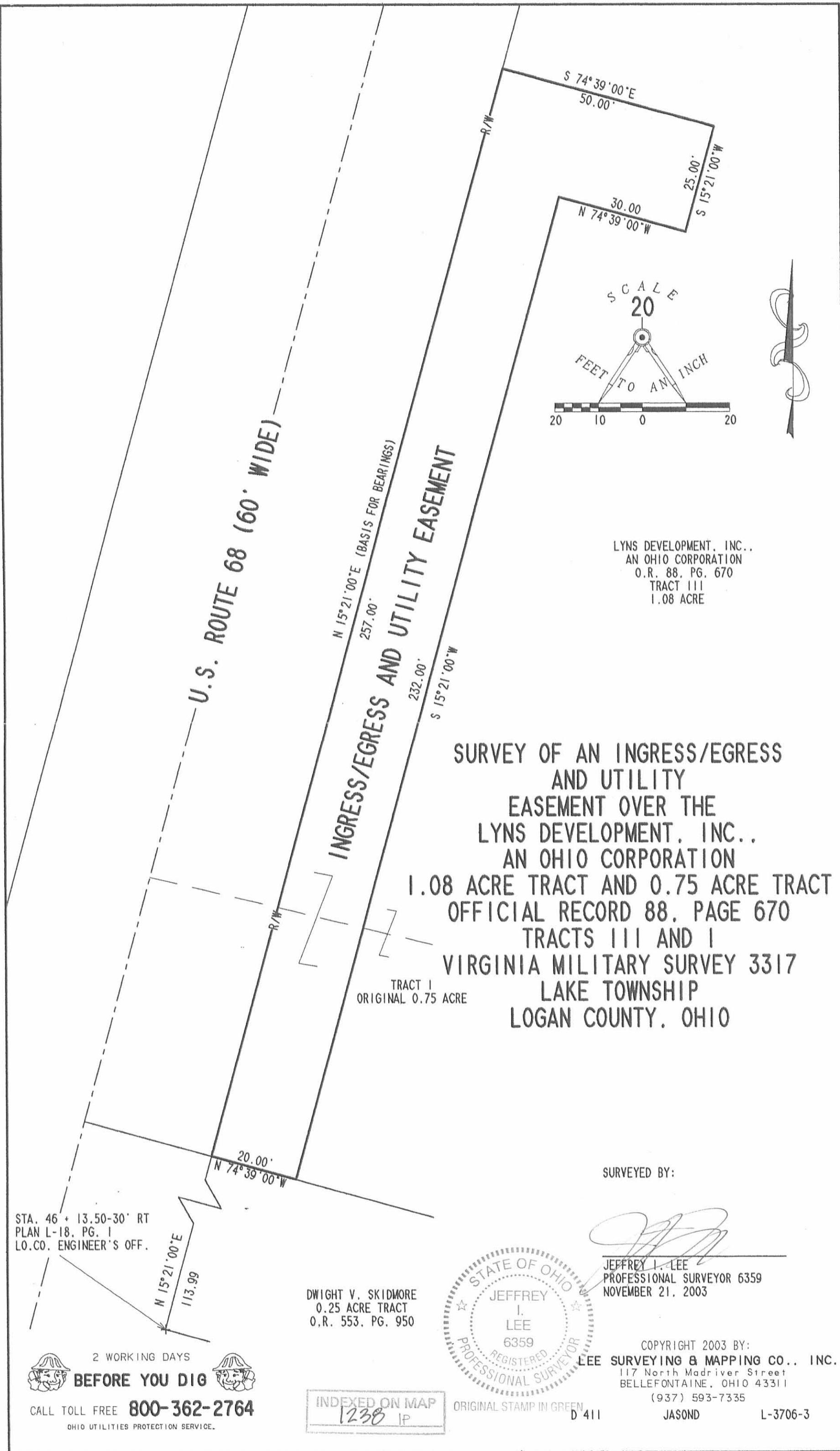


ORIGINAL STAMP IN GREEN

A handwritten signature in black ink, appearing to read 'J. Lee', is written over the typed name and title.
Jeffrey J. Lee
Professional Surveyor 6359
December 5, 2003

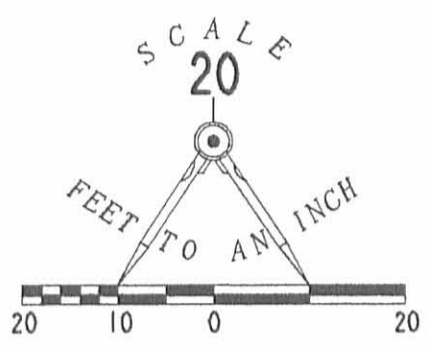
L-3706





U.S. ROUTE 68 (60' WIDE)

INGRESS/EGRESS AND UTILITY EASEMENT



LYNS DEVELOPMENT, INC.,
AN OHIO CORPORATION
O.R. 88, PG. 670
TRACT III
1.08 ACRE

**SURVEY OF AN INGRESS/EGRESS
AND UTILITY
EASEMENT OVER THE
LYNS DEVELOPMENT, INC.,
AN OHIO CORPORATION
1.08 ACRE TRACT AND 0.75 ACRE TRACT
OFFICIAL RECORD 88, PAGE 670
TRACTS III AND I
VIRGINIA MILITARY SURVEY 3317
LAKE TOWNSHIP
LOGAN COUNTY, OHIO**

TRACT I
ORIGINAL 0.75 ACRE

SURVEYED BY:

Jeffrey I. Lee

JEFFREY I. LEE
PROFESSIONAL SURVEYOR 6359
NOVEMBER 21, 2003

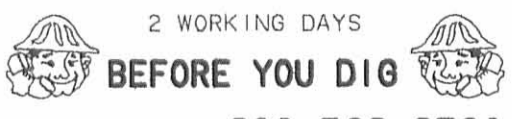


DWIGHT V. SKIDMORE
0.25 ACRE TRACT
O.R. 553, PG. 950

STA. 46 + 13.50-30' RT
PLAN L-18, PG. 1
LO.CO. ENGINEER'S OFF.

N 15° 21' 00" E
113.99

2 WORKING DAYS



CALL TOLL FREE **800-362-2764**
OHIO UTILITIES PROTECTION SERVICE.

INDEXED ON MAP
1238 IP

ORIGINAL STAMP IN GREEN
D 411

COPYRIGHT 2003 BY:
LEE SURVEYING & MAPPING CO., INC.
117 North Madriver Street
BELLEFONTAINE, OHIO 43311
(937) 593-7335
JASOND L-3706-3

1931
Sours Survey. Lake Twp.

Following land being in V.M.S. 3317, Lake Township,
Logan County, Ohio, described as follows:-

Beginning at a point on the N. side of S.H.226 [also
^{U.S.R. 68}
known as ~~State Route No. 53~~), the same being a 60 ft. road and
being station 48+24.5 of said road, thence, S.79 E.44 ft. along
the S. side of Wm.B. Stewart 47 $\frac{1}{2}$ acre tract to an iron pin, said
pin being the beginning point of this survey of 3 acres; thence
continuing S.79 E. with said Stewart S. line 361 ft. to an iron
pin; thence S. 6 W. 475 ft. to an iron; thence N.84 W. 178 ft.
to a post, said post being the S.E. corner of Charles J. Long
2.08 acres tract; thence N.14 W. 538 ft. to the place of beginn-
ing, said tract containing three (3.0) acres and being the same
tract as surveyed May 16, 1931 as shown and recorded in Logan
County Surveyor's Book 541 Page 25.

1238 2D

INDEXED ON MAP