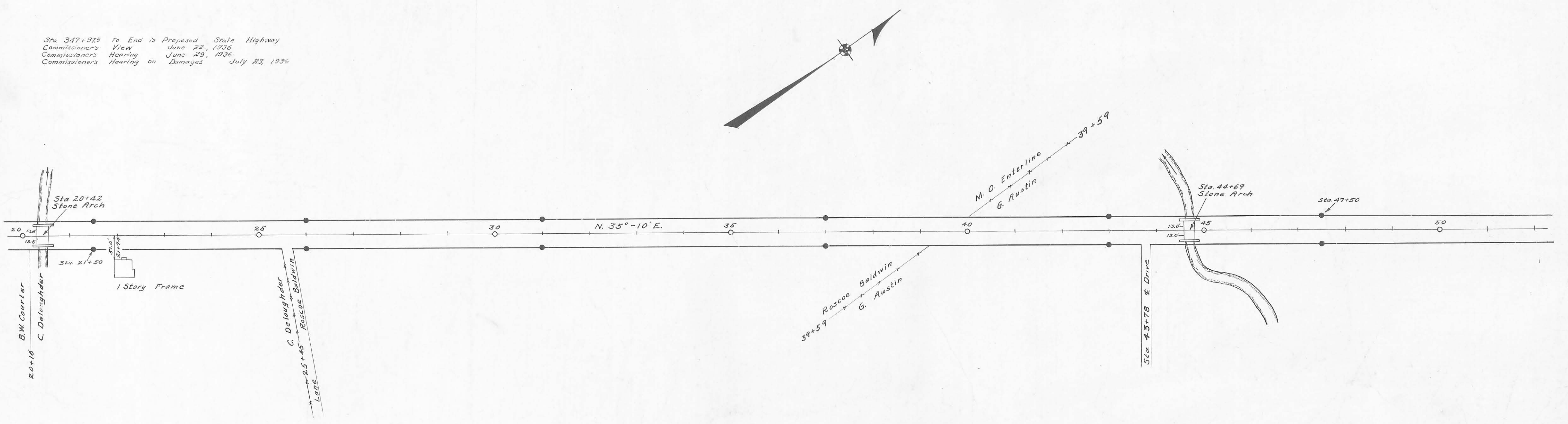


P.I. Sta. 41+63.4
Δ = 21°-14'
D = 12'
T = 89.66'
E = 8.38'
See Plan L-22
Logan County Engineer's Office

P.T. Sta. 51+81
Δ = 50°-30'
D = 20'
T = 135.1'
E = 30.26'
See Plan L-22
Logan County Engineer's Office

Bellefontaine - Rushsylvania Pike 1873 60' wide
See Free Turnpike Record Vol. 3 Page 238
See Map Book H Page 56
Rushsylvania - Big Springs Pike 1874 60' wide
See Free Turnpike Record Vol. 3 Page 348
See Map Book H Page 58
Concrete right-of-way monuments set as shown
Field Notes Book 578, Logan County Engineer's Office

Sta. 347+975 To End is Proposed State Highway
Commissioner's View June 22, 1936
Commissioner's Hearing June 29, 1936
Commissioner's Hearing on Damages July 23, 1936

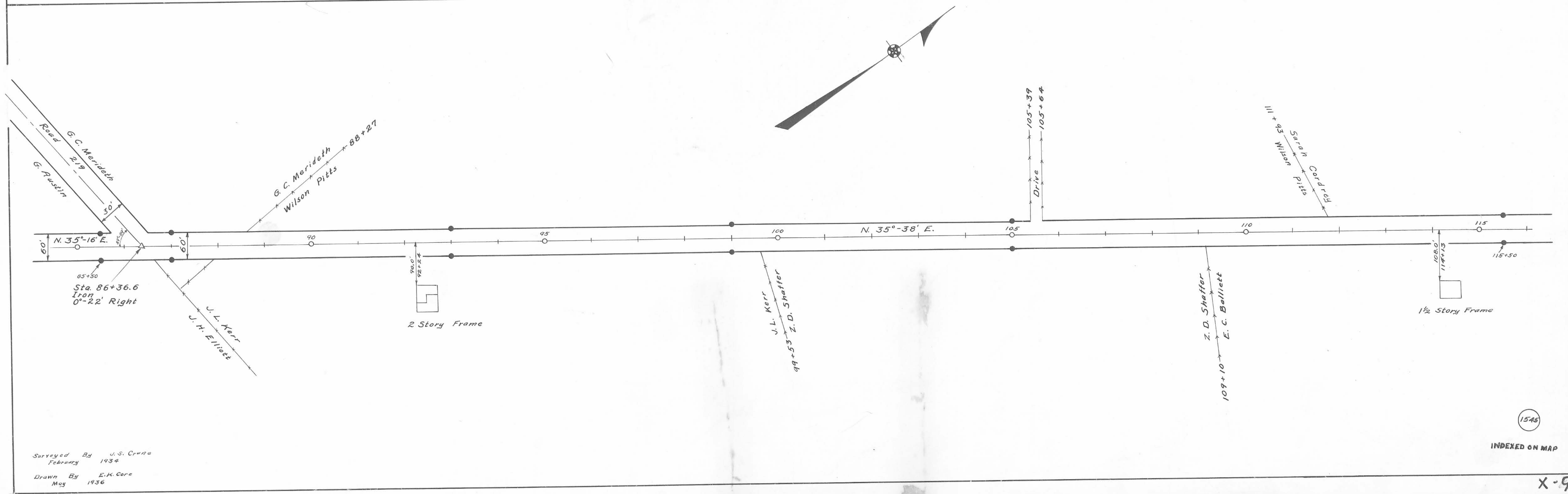
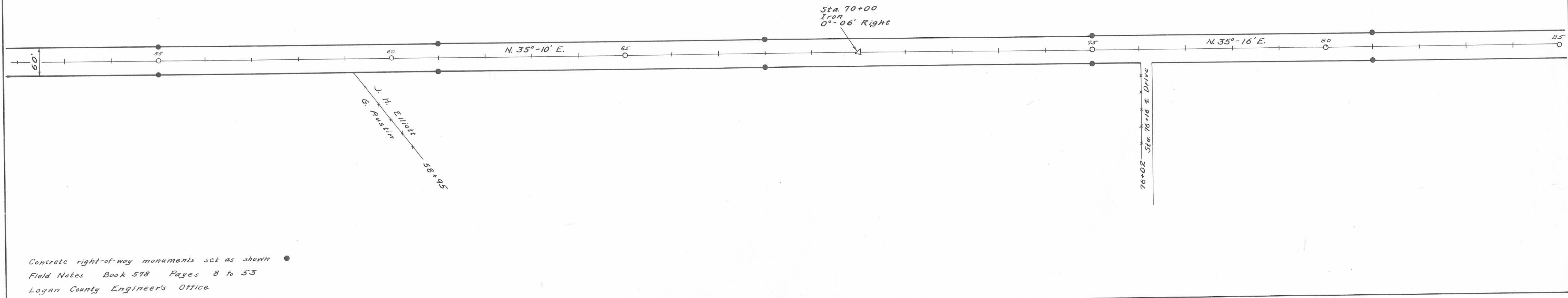


Surveyed By J.S. Crane
February 1934
Drawn By E.K. Coro
May 1936

ROAD 9

X-9

X-9

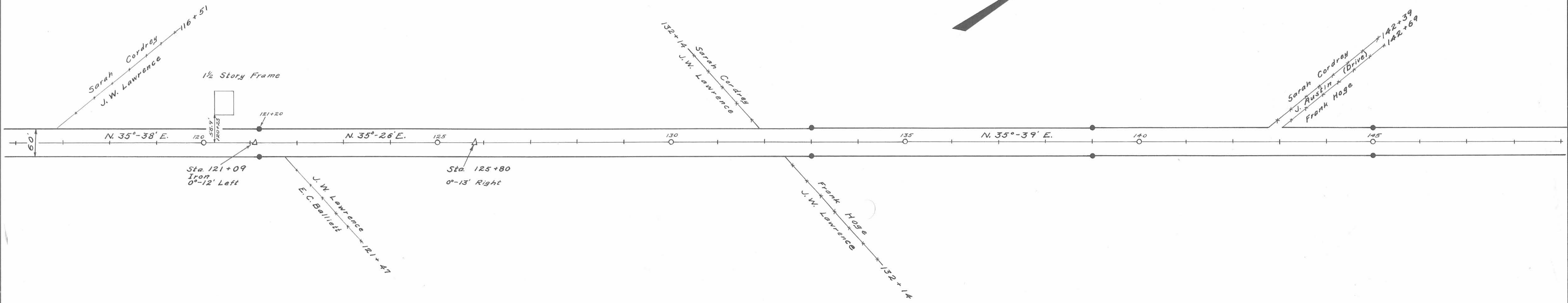
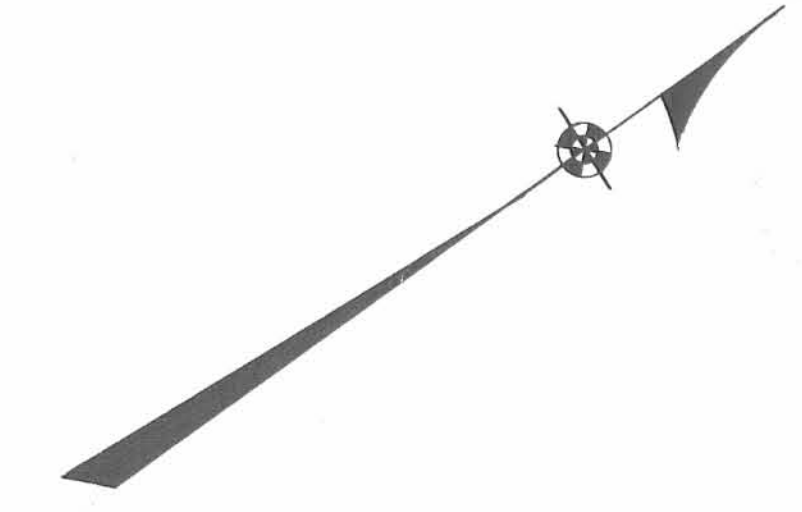


Surveyed By J. S. Crown
 February 1934
 Drawn By E. K. Core
 May 1936

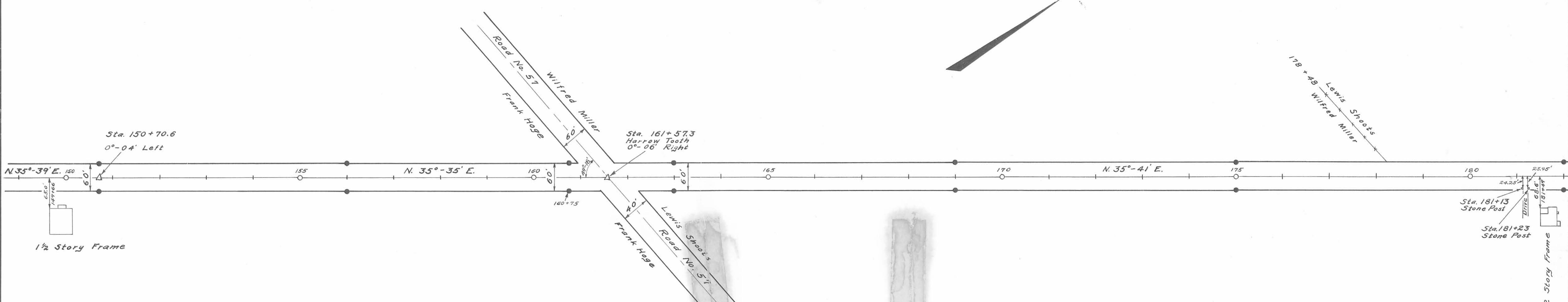
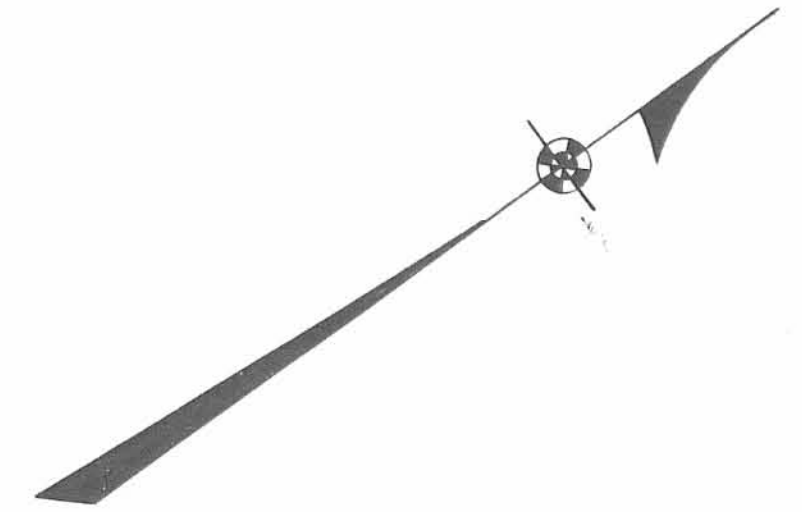
1545

INDEXED ON MAP

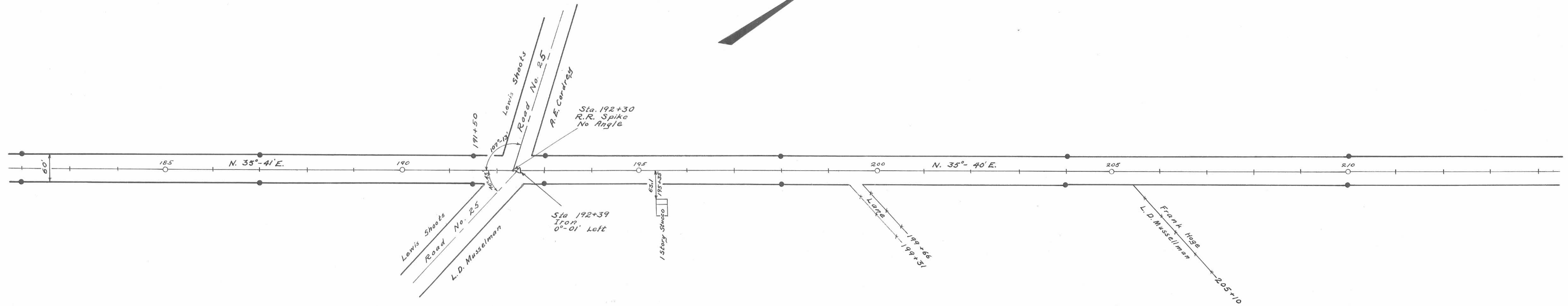
X-9



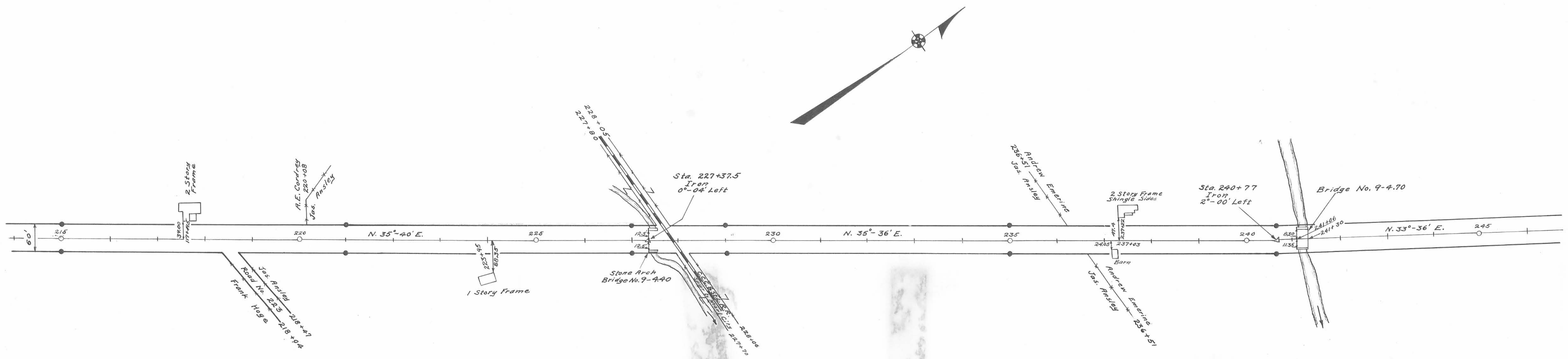
Concrete right-of-way monuments set as shown •
Field Notes Book 578 Pages 8 to 53
Logan County Engineers Office



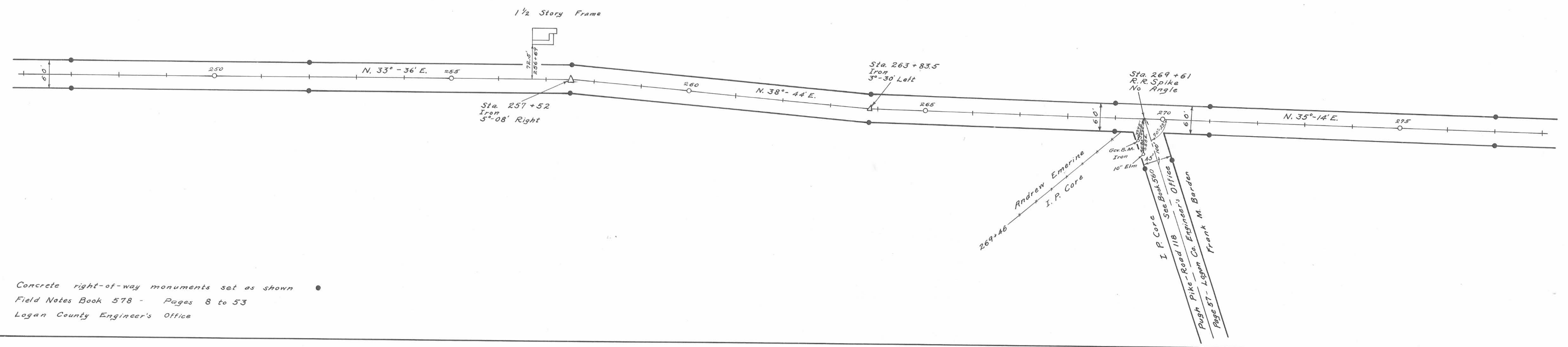
Surveyed By J.S. Crane
March 1934
Drawn By E.K. Core
May 1936



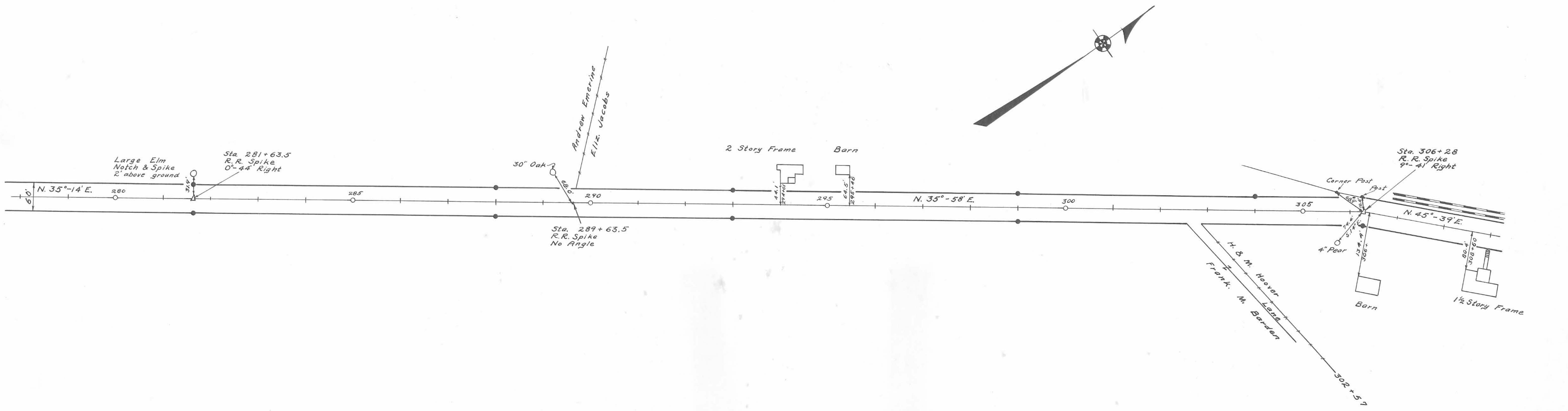
Concrete right-of-way monuments set as shown ©
Field Notes Book 578 Pages 8 to 53
Logan County Engineers Office



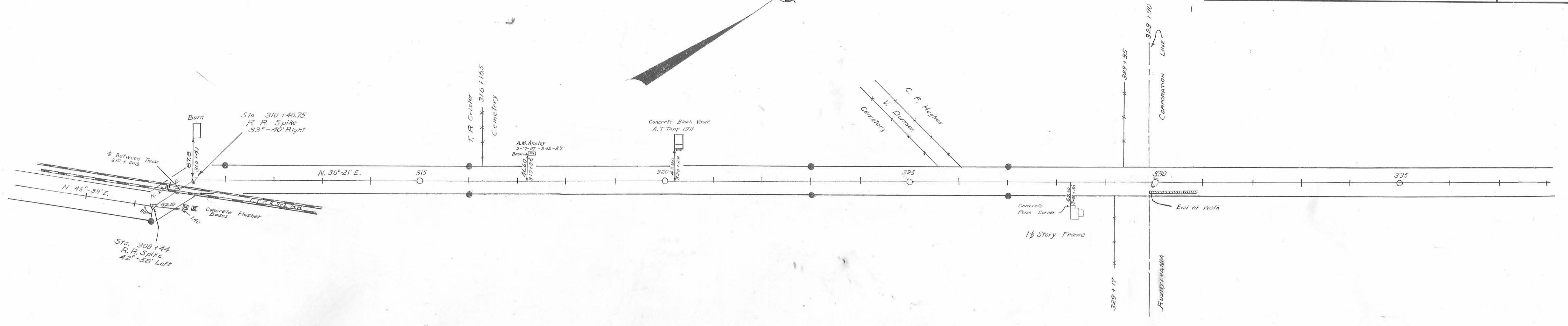
Surveyed By U. S. Crane & F. F. Wright
March 1934
Drawn By F. F. Wright & E. K. Core
May 1936



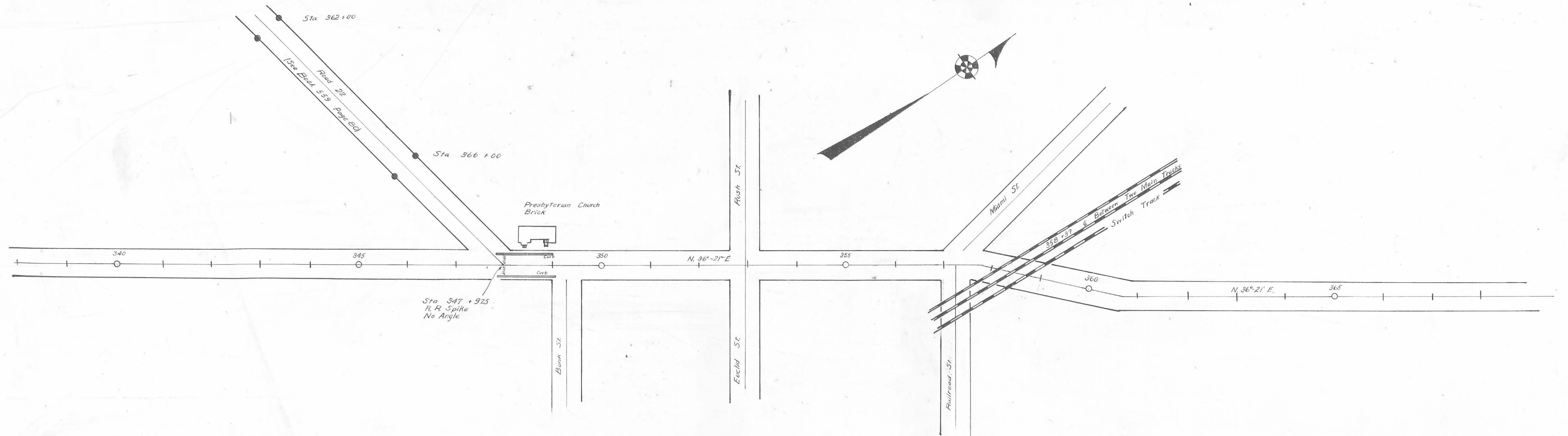
Concrete right-of-way monuments set as shown
 Field Notes Book 578 - Pages 8 to 53
 Logan County Engineer's Office



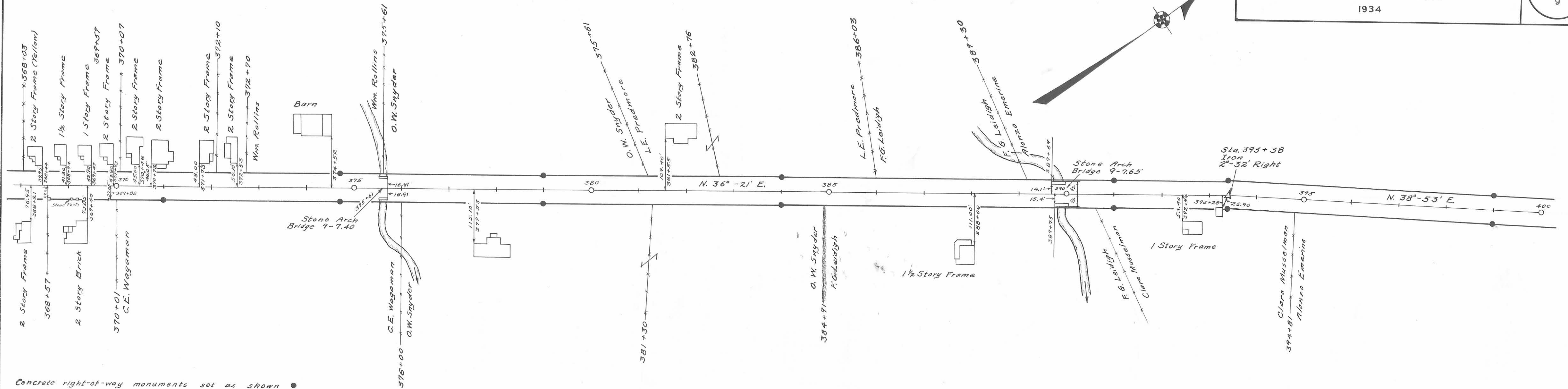
Surveyed By F. F. Wright
 March 1934
 Drawn By E. K. Core
 May 1936



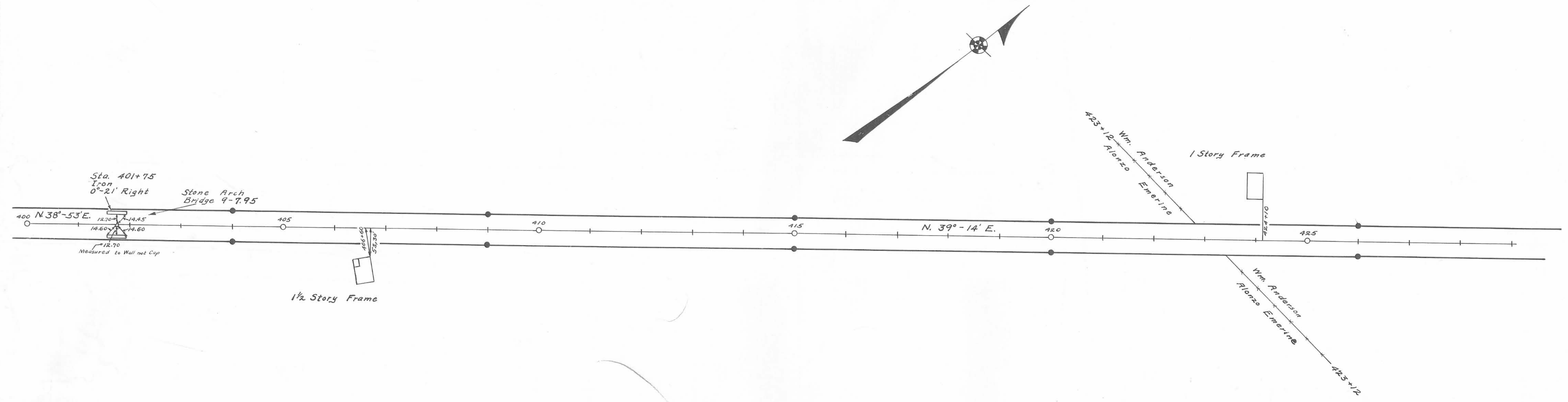
Concrete Right of Way Markments Set as Shown
Field Notes Book 578 Pages 8 to 53
Logan County Engineer's Office



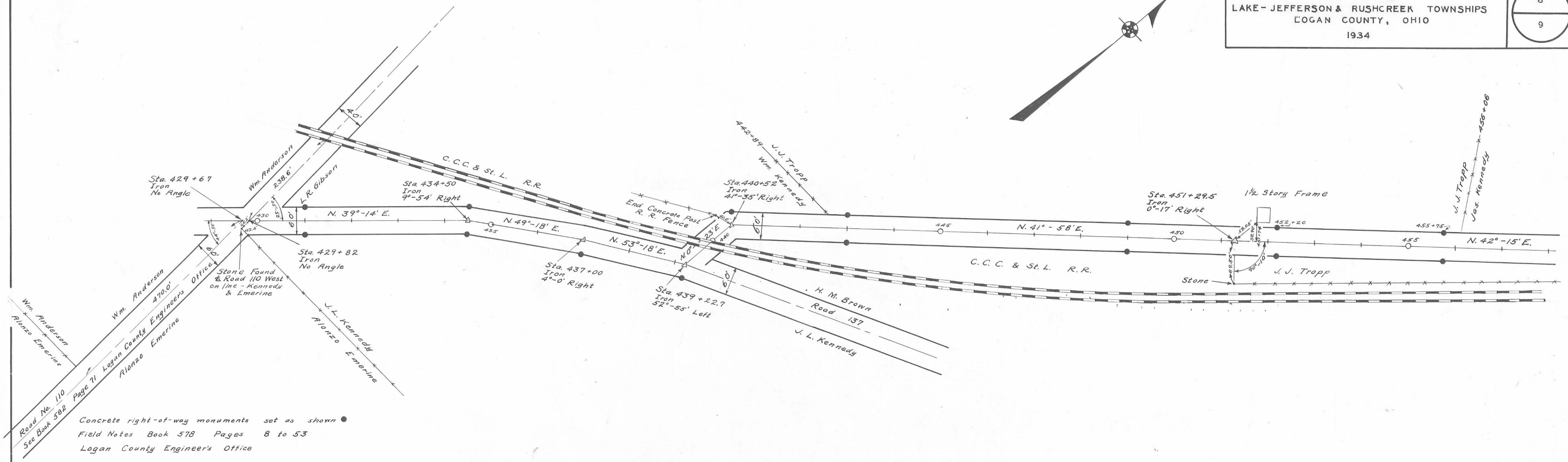
Surveyed By R. F. Wright
March 1934
Drawn By E. K. Cere
June 1936



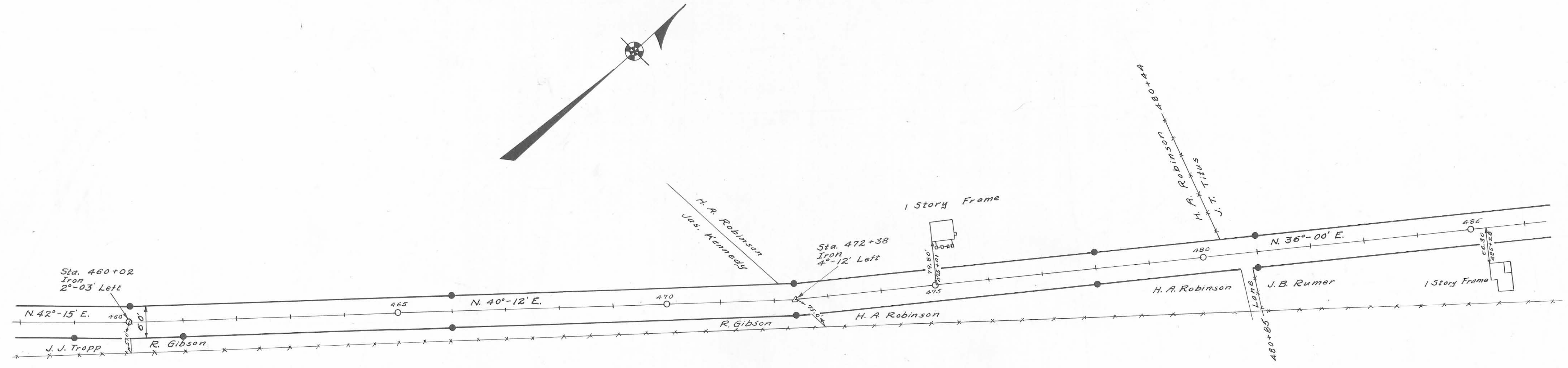
Concrete right-of-way monuments set as shown ●
Field Notes Book 578 Pages 8 to 53
Logan County Engineers Office



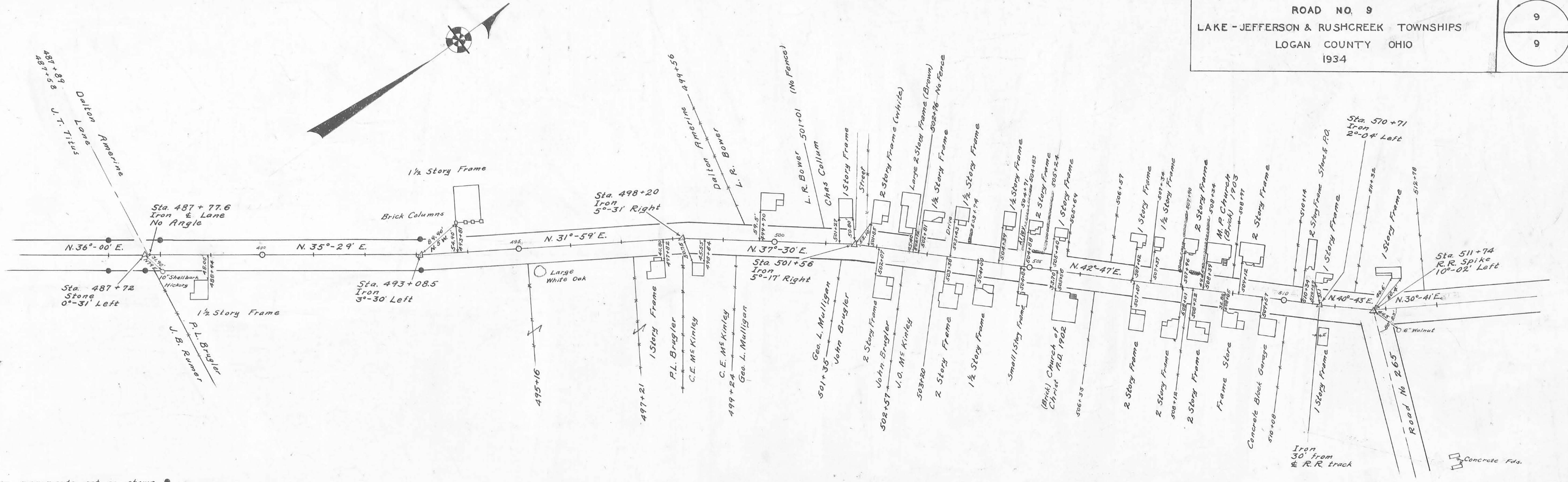
Surveyed By F. F. Wright
March 1934
Drawn By E. K. Carr
May 1936



Concrete right-of-way monuments set as shown
Field Notes Book 578 Pages 8 to 53
Logan County Engineer's Office

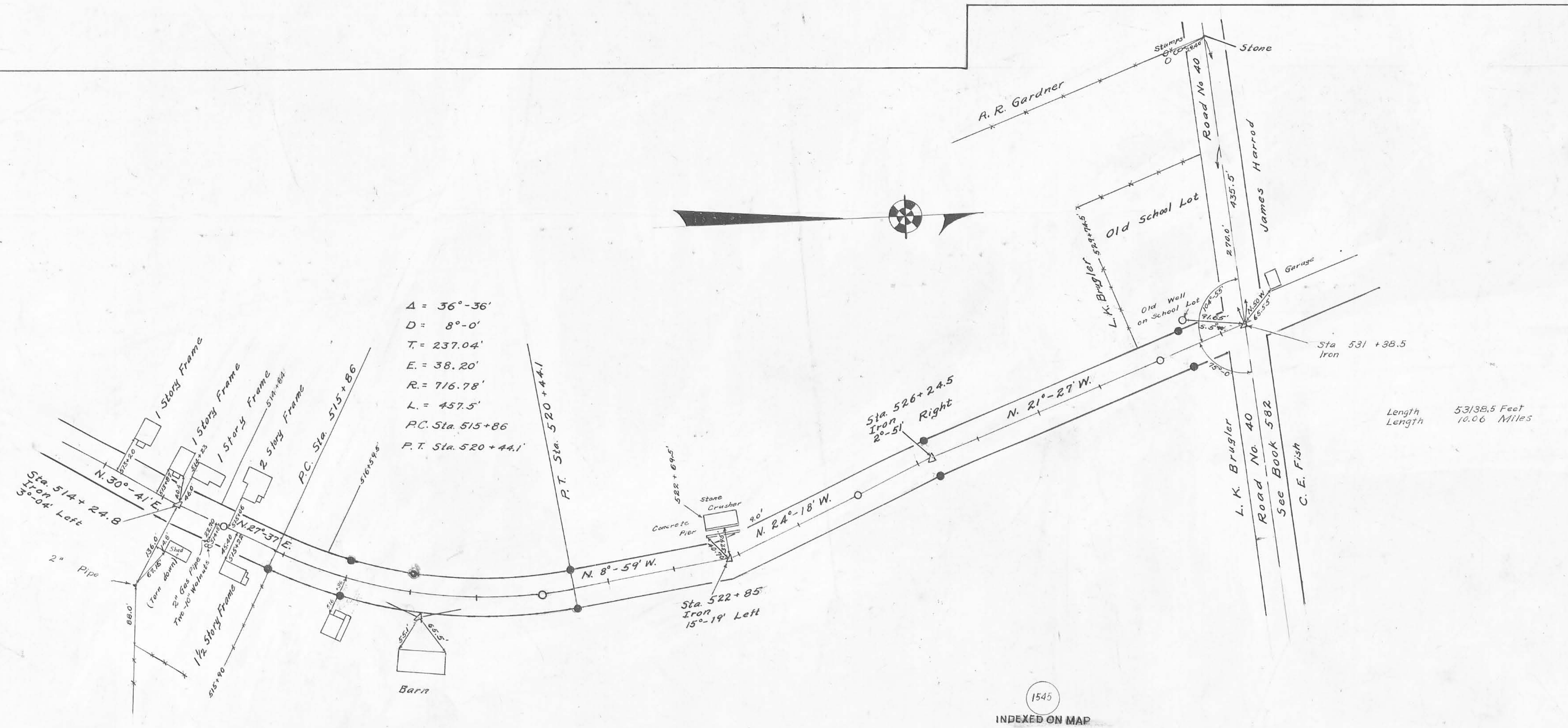


Surveyed By F.F. Wright
March 1934
Drawn By E.K. Core
May 1936



Concrete right-of-way monuments set as shown •
Field Notes Book 578 Pages 8 to 53
Logan County Engineers Office

ROAD 9



$A = 36^{\circ}-36'$
 $D = 8^{\circ}-0'$
 $T = 237.04'$
 $E = 38.20'$
 $R = 716.78'$
 $L = 457.5'$
 $P.C. Sta. 515+86$
 $P.T. Sta. 520+44.1$

Length 53138.5 Feet
Length 10.00 Miles

Surveyed By F.F. Wright
March 1934
Drawn By E.H. Cera
June 1936

1545
INDEXED ON MAP