

ICE-Co. Zerbee survey

- A. Iron with cover
- B. Iron - 0.9' E of E. edge of walk
- C. Iron
- D. Iron
- E. Iron

Tract 1

C-D-H-G-F-E-C

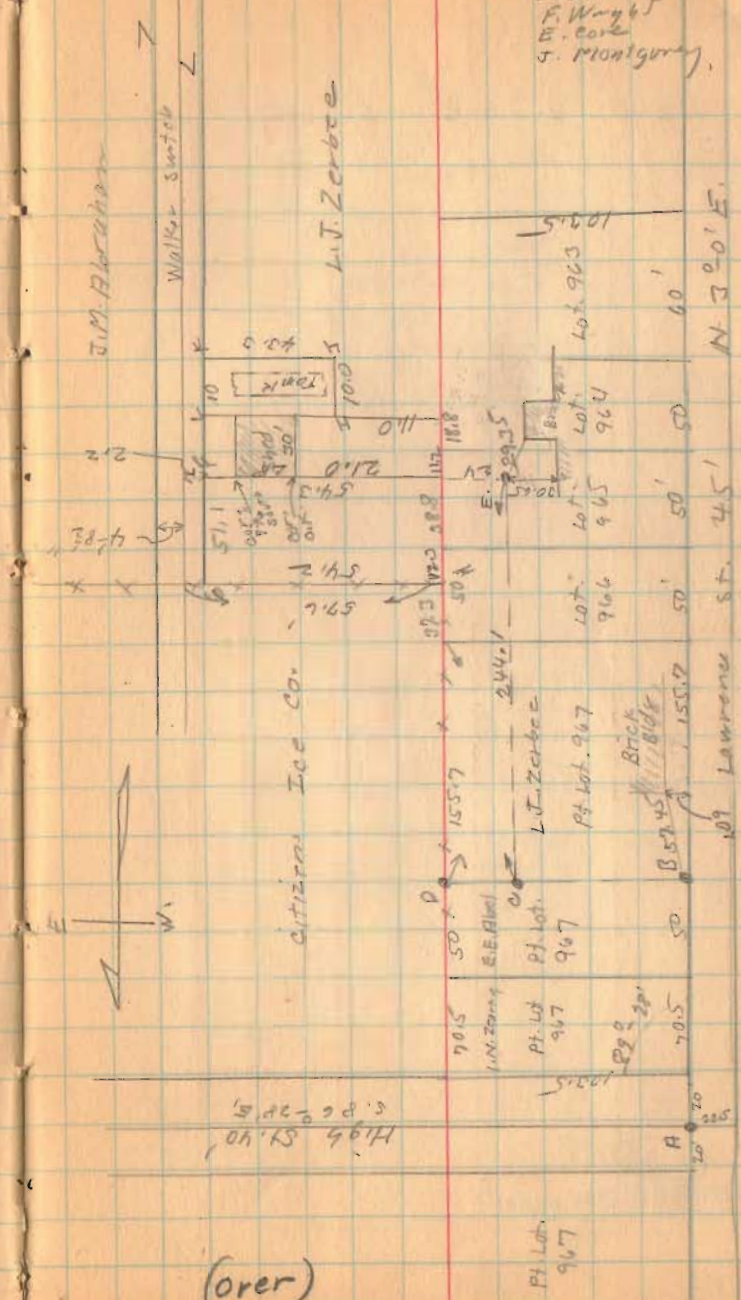
Tract 2 I-J-K-L-I

1681

INDEXED ON MAP

Aug. 29, 1935
 2001.
 F. W. Wright
 E. Cole
 J. Montgumery

69



(over)

Pt. Lot 967

Ice Co. Zerbee Survey.

INDEXED ON MAP
1681

