

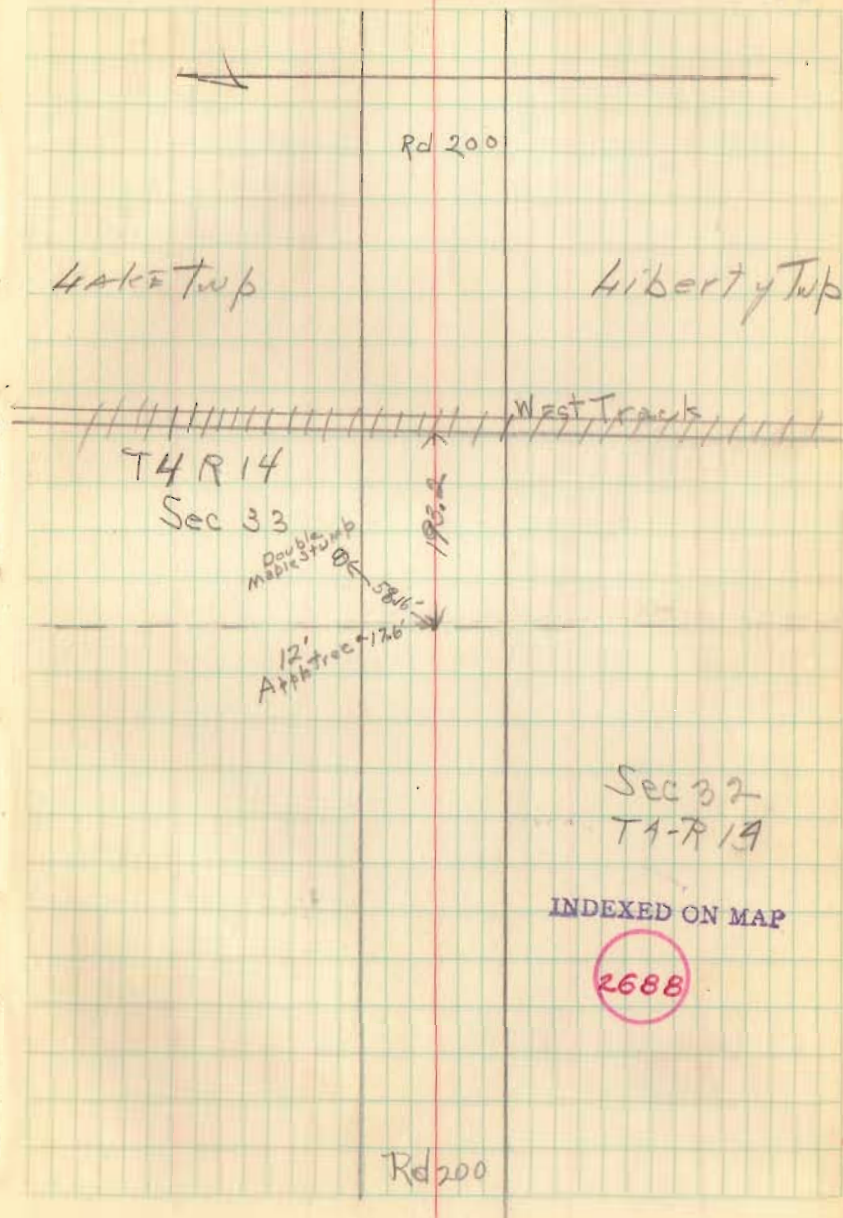


7/14/43

Found stone boulder 8x12x24  
3' under surface. Removed stone  
and placed Mon. 3" below surface  
with this marking.

G. Wilgus  
R. Fout  
A. Allen

76



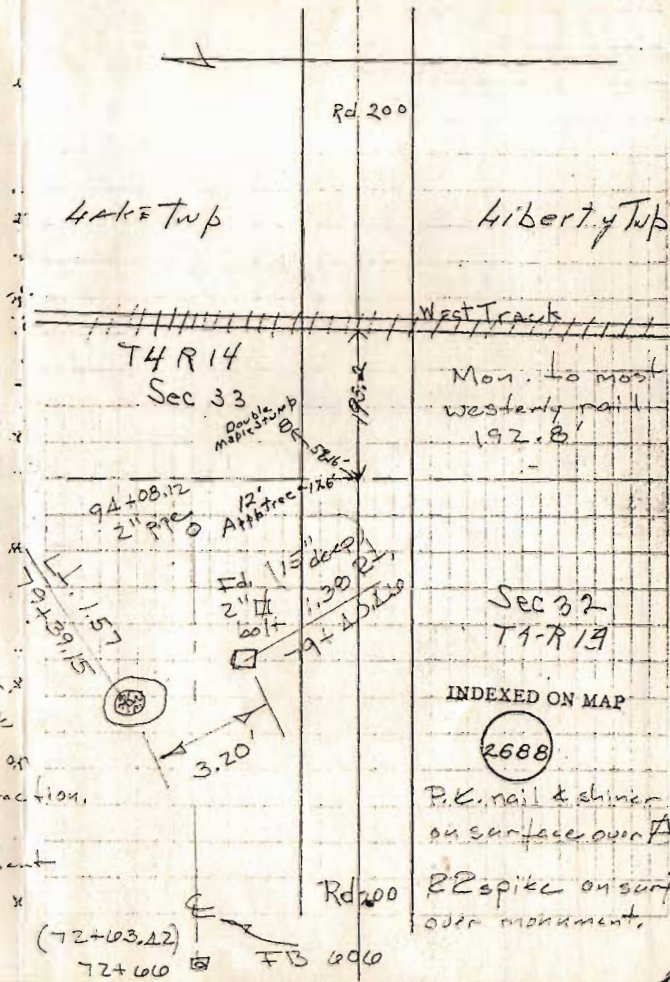


7/14/43  
 Found stone boulder 8x12x24  
 3' under surface. Removed stone  
 and placed Mon. 3" below surface  
 with this marking.

G. Wilgus  
 P. Fout  
 A. Allen

Fd. 10 June, 1987 p.m.  
 10" deep. - put 1/2 brick  
 & steel plate 3"x5" x 90" on  
 west side for mag. attraction.

Chamberlain, Dill, & Gilbert  
 Nicholas



Sec 32  
 T4-R14

INDEXED ON MAP

(2688)

P.K. nail & shiner  
 on surface over A

22 spike on surface  
 over monument.

Liberty Twp

West Tracks

Mon. to most  
 westerly nail  
 192.8

Sec 32  
 T4-R14

INDEXED ON MAP

(2688)

Rd 200