

REC'D 12-14-00 smy OK ✓

Lee Surveying and Mapping Co., Inc.

Land Surveys • Topography • Subdivisions • Construction Layout

117 N. Madriver St.
Bellefontaine OH 43311



Phone: (937) 593-7335
Fax: (937) 593-7444

WISH 1.766 ACRES

Lying in the Virginia Military Survey 3324, Lake Township, Logan County Ohio.

Being out of the James F. Wish, Trustee original 40.84 acre tract as deeded and described in Official Record 316, Page 538 Tract I of the Logan County Records of Deeds and being more particularly described as follows:

Beginning at a railroad spike found at the intersection of the center-lines of County Highway 219 and U.S. Route 68 (right-of way varies).

THENCE, with the center-line of U.S. Route 68, N13°-32'-30" E, a distance of 888.24 feet to a MAG nail set at the TRUE POINT OF BEGINNING.

THENCE, N 76°-27'-30" W, a distance of 285.00 feet to a 5/8 inch iron rod set, passing a 5/8 inch iron rod set at 50.00 feet.

THENCE, N 13°-32'-30" E. a distance of 270.00 feet to a 5/8 inch iron rod set.

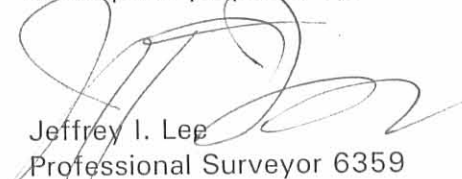
THENCE, S 76°-27'-30" E, a distance of 285.00 feet to a point, passing a 5/8 inch iron rod set at 254.73 feet.

THENCE, with the center-line of U.S. Route 68, S 13°-32'-30" W, a distance of 270.00 feet to the point of beginning.

Containing 1.766 acre of which 0.261 acre is within the highway right-of-way.

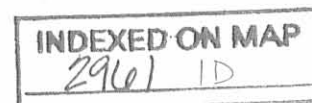
The basis for bearings is the center-line of U.S. Route 68 being N 13°-32'-30" E, and all other bearings are from angles and distances measured in a field survey by Lee Surveying and Mapping Co., Inc. on November 2, 2000

Description prepared by:


Jeffrey I. Lee
Professional Surveyor 6359
December 6, 2000

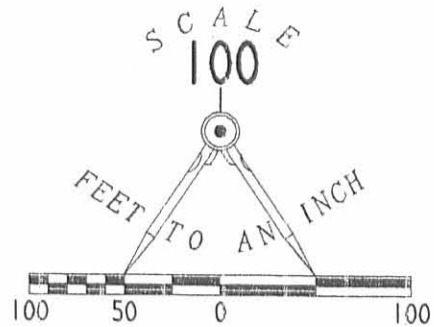


ORIGINAL STAMP IN GREEN

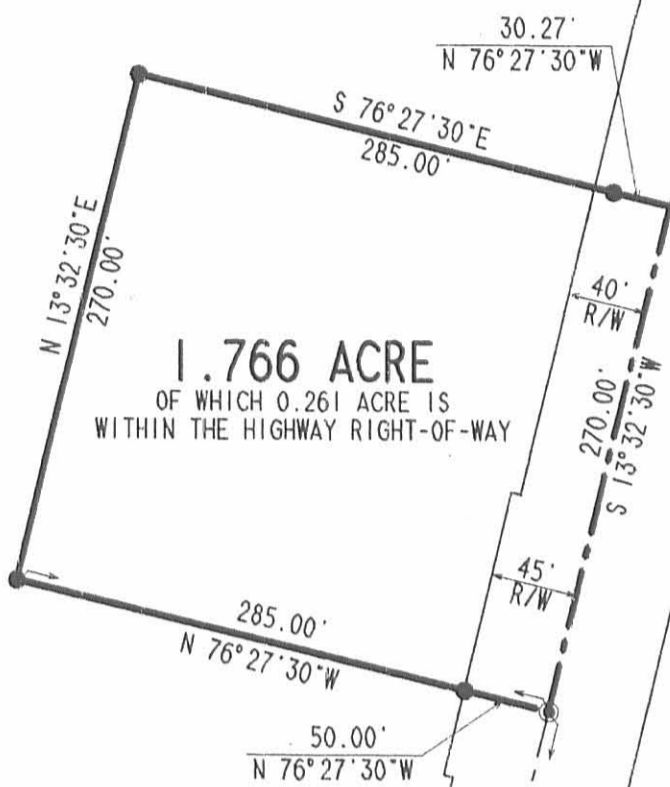


L-929

JAMES F. WISH, TRUSTEE
 ORIG. 40.84 ACRE TRACT
 O.R. 316, PAGE 538
 TRACT 1



- LEGEND
- ☒ CONCRETE MONUMENT FOUND
 - ⊗ RAILROAD SPIKE FOUND
 - RIGHT-OF-WAY MARKER FOUND
 - ⊙ MAG NAIL SET
 - 5/8 INCH IRON ROD SET



(R/W VARIES)

68

BOUNDARY SURVEY OF A 1.766 ACRE TRACT
 OUT OF THE JAMES F. WISH, TRUSTEE
 ORIGINAL 40.84 ACRE TRACT
 OFFICIAL RECORD 316, PAGE 538, TRACT 1
 VIRGINIA MILITARY SURVEY 3324
 LAKE TOWNSHIP, LOGAN COUNTY, OHIO



ORIGINAL STAMP IN GREEN

SURVEYED BY:

Jeffrey L. Lee
 JEFFREY L. LEE
 PROFESSIONAL SURVEYOR 6359
 DECEMBER 5, 2000

COUNTY HIGHWAY 219
 (40' R/W)

INDEXED ON MAP
 2961 1P



2 WORKING DAYS

BEFORE YOU DIG



CALL TOLL FREE 800-362-2764
 OHIO UTILITIES PROTECTION SERVICE.

COPYRIGHT 2000 BY:
 LEE SURVEYING & MAPPING CO., INC.
 117 North Madriver Street
 BELLEFONTAINE, OHIO 43311
 (937) 593-7335

D-389 JWISH L-929-2

BRUGLER SURVEY

V.M.S. 3324

LAKE TOWNSHIP

JULY 7, 1956

The following described real estate situated in Lake Township, Logan County, Ohio and being part of Virginia Military Survey 3324 and more particularly described as follows:

Commencing at a point in the center of U.S. Route No. 68 at the northeast corner of Mabel Steinberger's 21.90 acre tract, said point being Sta. 12 + 56 as shown on Logan County Engineers' plan W-3, sheet 4; thence with said center line N. 12°-22' E. 369.0 feet to P. C. Sta. 16 + 25; thence with a 1°-00' curve to the right 250.0 feet to P.T. Sta 18 + 75; thence continuing with said center line N. 14°-52'E. 183.0 feet to a point at Sta. 20 + 58; said point being the beginning point of this description; thence N. 75°-08'W. 208.7 feet to an iron pin, passing an iron pin in the west right-of-way line of said road at 35.0 feet; thence N. 14°-52'E. 208.7 feet to an iron pin; thence S. 75°-08'E. 208.7 feet to the center line of said U.S. Route No. 68, passing an iron pin in the west right-of-way line of said road at 178.7 feet; thence with said center line S. 14°-52'W. 208.7 feet to the place of beginning.

Containing 1.00 acre more or less.

The above described tract taken from John L. Bruglers' 41.77 acre tract.

on Plat

2961
2D

INDEXED ON MAP