

HENNESSY SURVEY  
V.M.S. 3324  
LAKE TOWNSHIP  
AUGUST 31, 1965

PARKER TO THOMPSON

The following described real estate situated in Lake Township, Logan County, Ohio and being part of Virginia Military Survey 3324 and more particularly described as follows:

Beginning at a point in the center of U.S. Route 68 at Station 92+31 as shown on Logan County Engineers Plan L-18, said point also being the northwest corner of Patrick E. Hennessy's 0.67 acre tract; thence with the centerline of said U.S. Route 68, N.12° 43'E. 188.7 feet to a point ( Sta. 94+19.7 ); thence S.77° 17'E. 208.7 feet; thence S.12° 43'W. 188.7 feet to an iron bar in the north line of said Hennessy's 0.67 acre tract; thence with said north line N.77° 17'W. 208.7 feet to the place of beginning, passing an iron bar at 178.7 feet.

Containing 0.90 of an acre more or less.

3885 ID-1

INDEXED ON MAP

HENNESSY SURVEY  
V.M.S. 3324  
LAKE TOWNSHIP  
AUGUST 31, 1965

PARKER TO HENNESSY

The following described real estate situated in Lake Township, Logan County, Ohio and being part of Virginia Military Survey 3324 and more particularly described as follows:

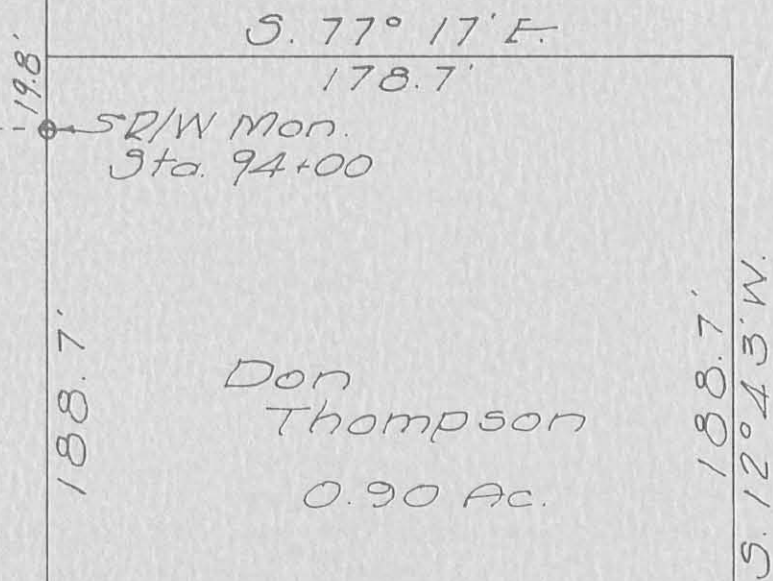
Beginning at a point in the center of U.S. Route 68 at Station 91+21 as shown on Logan County Engineers Plan L- 18; thence with the centerline of said U.S. Route 68, N.12° 43'E. 110.0 feet to a point ( Sta. 92+31 ) ; thence S.77° 17'E. 264.0 feet to an iron bar, passing an iron bar at 30.0 feet; thence S.12° 43'W. 110.0 feet to an iron bar; thence N.77° 17'W. 264.0 feet to the place of beginning, passing an iron bar at 234.0 feet.

Containing 0.67 of an acre more or less.

3005 1D-2

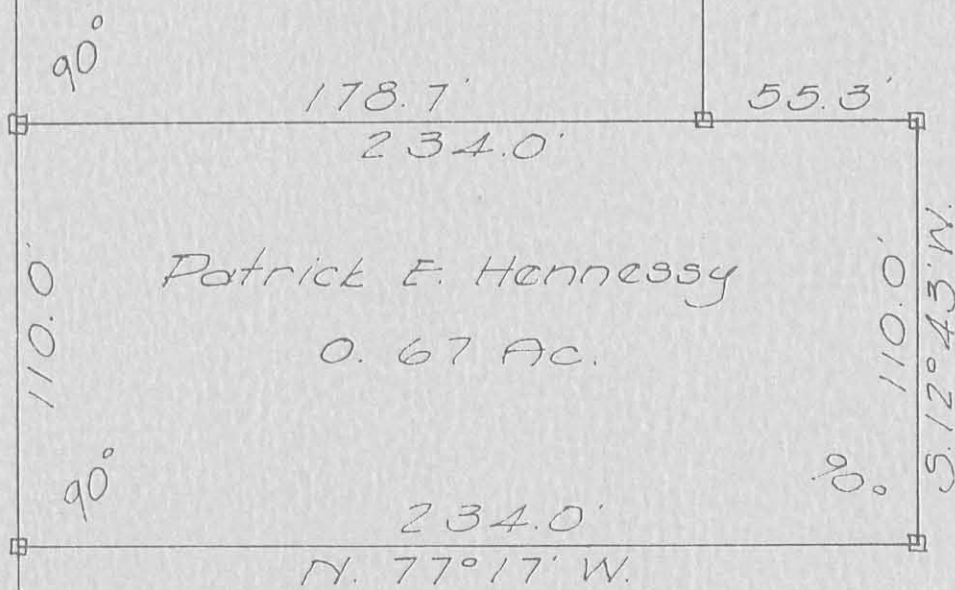
INDEXED ON MAP

U.S. ROUTE 68  
N. 12° 43' E.



HENNESSY SURVEY  
V.M.S. 3324  
LAKE TOWNSHIP  
LOGAN COUNTY, OHIO  
AUGUST 31, 1965  
SCALE 1" = 50'

□ = 1/2" Bar Set



121.0'  
REFERENCE:  
Co. Eng. Plan L-18

INDEXED ON MAP

3885  
IP

R/W Mon.  
Sta. 90+00

*Dan L. Dodson*  
Dan L. Dodson  
Reg. Surveyor 4270  
Bellefontaine, Ohio

HENNESSY SURVEY  
 V.M.S. 3324  
 LAKE TOWNSHIP

Original Survey by W. Scott.

Deeds call for lots to be 94° off Road; this is error, should be 90°

Staked as 90° from Road

□ = 1/2" Bar Jet

INDEXED ON MAP  
3885

Dodson  
 L. Geeslin

Aug. 31, 1965

30

