

Forest L. Brackney Description

The following described Real Estate situated in The Township of Lake, County of Logan, State of Ohio and being in Virginia Military Survey No. 3317 and being more particularly described as follows:

Beginning at an iron in the center line of U.S.R. No. 68, being Station 29+63.30 as shown on Plan L-18, Logan County Engineers Office, and being the Northeast corner of Lawrence S. Moots's 15.41 Acre tract;

Thence with Moots's north line, N. 72° 23' W. 852.00 feet to a point in the west line of V.M.S. No. 3317 and the northwest corner of Moots;

Thence with said V.M.S. line, N. 5° 10' W. 68.00 feet to a Railroad concrete property post;

Thence with said Railroad lands, N. 10° 21' E. 534.40 feet to a post, the southwest corner of Charles W. Karg's 12.88 Acre tract;

Thence with Karg's south line, N. 82° 11' E. 812.40 feet to a post, northwest corner to The Federal Land Bank's 1.25 acre tract;

Thence with The Federal Land Bank's west line, S. 15° 21' W. 263.10 feet to a post, being the Southwest corner of said Land Bank's land;

Thence with The Federal Land Bank's south line, S. 74° 39' E. 180.00 feet to a point in the center line of U.S.R. No. 68;

Thence with the center line of U.S.R. No. 68, S. 15° 21' W. 726.20 feet to the place of beginning, containing 15.94 Acres more or less.

This Tract is the same land as now carried on the Logan County Auditor's Land Duplicate as being 19.36 Acres.

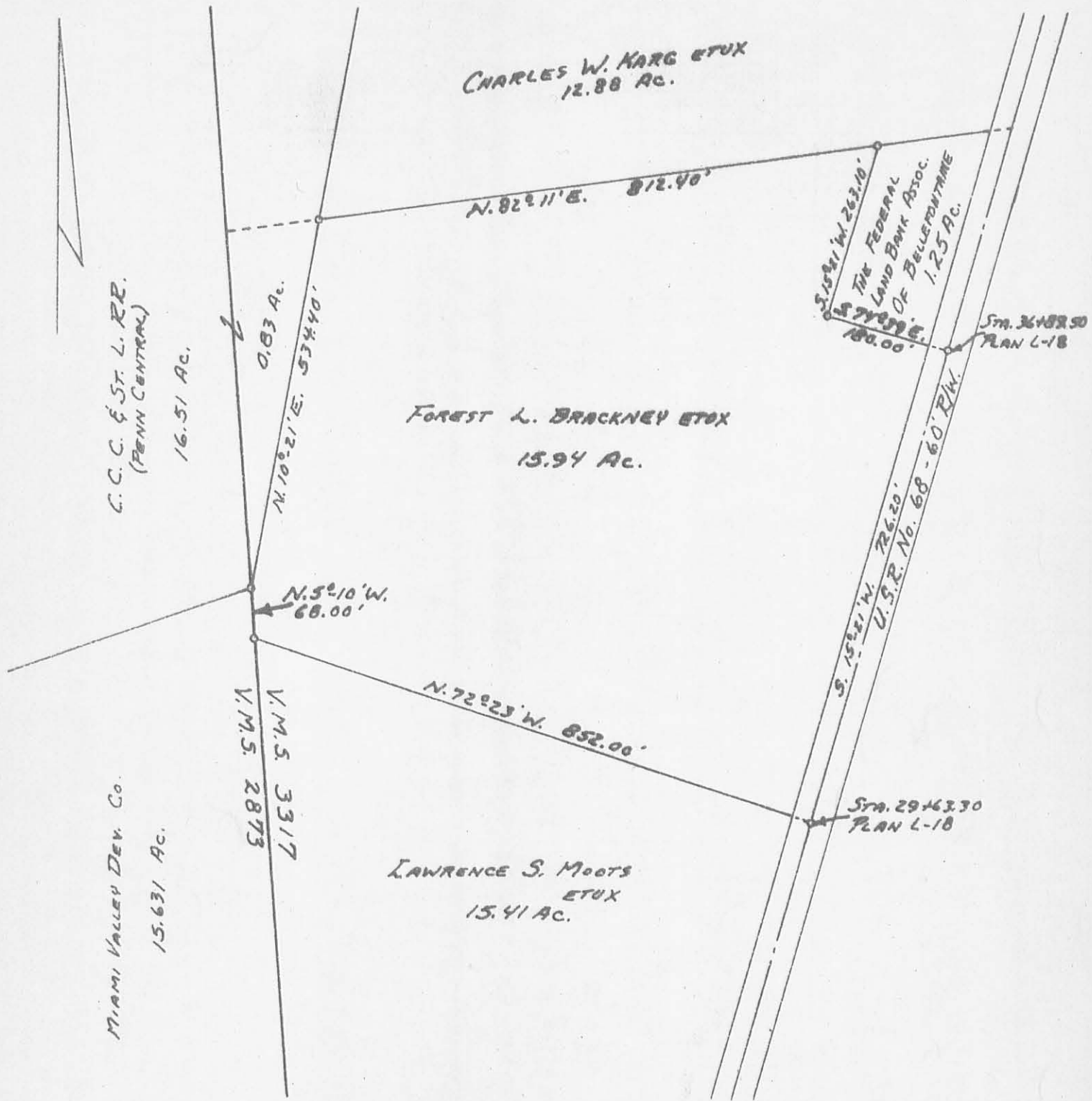
I hereby certify that this is a true and accurate description of land now in the name of Forest L. Brackney et ux on March 8, 1968.

Daniel E. Gilbert
Daniel E. Gilbert
Reg. Sur. No. 5402



4191 ID

INDEXED ON MAP



CHARLES W. KARG ETUX
12.88 AC.

C.C.C. & ST. L. RR.
(PENN CENTRAL)
16.51 AC.

FOREST L. BRACKNEY ETUX
15.94 AC.

MIAMI VALLEY DEV. CO.
15.631 AC.

V.M.S. 2873
V.M.S. 3317

LAWRENCE S. MOOTS
ETUX
15.41 AC.

S. 15° 41' W. 263.10'
THE FEDERAL
LAND BANK ASSOC.
OF BELLEFONTAINE
1.25 AC.

Sta. 36+82.50
PLAN L-18

N. 5° 10' W.
68.00'

N. 72° 23' W. 852.00'

S. 15° 21' W. 76.20'
U.S.R. No. 68-60' R/W.

Sta. 29+63.30
PLAN L-18

PLAT OF
FOREST L. BRACKNEY LAND
V.M.S. 3317
LAKE TOWNSHIP
LOGAN COUNTY, OHIO



DANIEL E. GILBERT
REG. SUR. No. 5402

1968

INDEXED ON MAP

SCALE: 1"=200'

4191 IP

Moon Survey
October, 1975

Being situated in Lake Township, Logan County, Ohio; and being a part of V.M.S. 3317.

Beginning at a point in the center of State Route 68 that is Station 29 + 63.3 as shown on Plan L - 18 in the Logan County Engineer's office; also being the northeast corner of a 2.83 acre tract.

Thence with the center of State Route 68 N 15°-32' E 200.5 feet to the true place of beginning for this description.

Thence N 69°-55' W 512.2 feet to a corner post.

Thence N 13°-15' E 126.5 feet to a corner post.

Thence S 73°-59' E 70.0 feet to a point.

Thence N 15°-02' E 149.0 feet to an iron.

Thence S 74°-44' E 117.0 feet to an iron.

Thence S 14°-42' W 58.0 feet to a point.

Thence S 72°-30' E 63.5 feet to a corner post.

Thence S 14°-40' W 202.0 feet to a corner post.

Thence S 69°-55' E 263.4 feet to a point in the center of State Route 68.

Thence with the center of State Route 68 S 15°-32' W 33.0 feet to the place of beginning.

Containing 1.51 acres more or less. Being surveyed from a 15.94 acre tract.

Owen K. Shirk
Surveyor 4271

| |
|---------------------------|
| INDEXED ON MAP 4191 2D |
|---------------------------|

MOON SURVEY

LAKE TWP., LOGAN CO., OHIO
V.M.S. 3317 - 1" = 60'



INDEXED ON MAP
41912D

Owen K. Shirk
Surveyor 4271
10-22-75