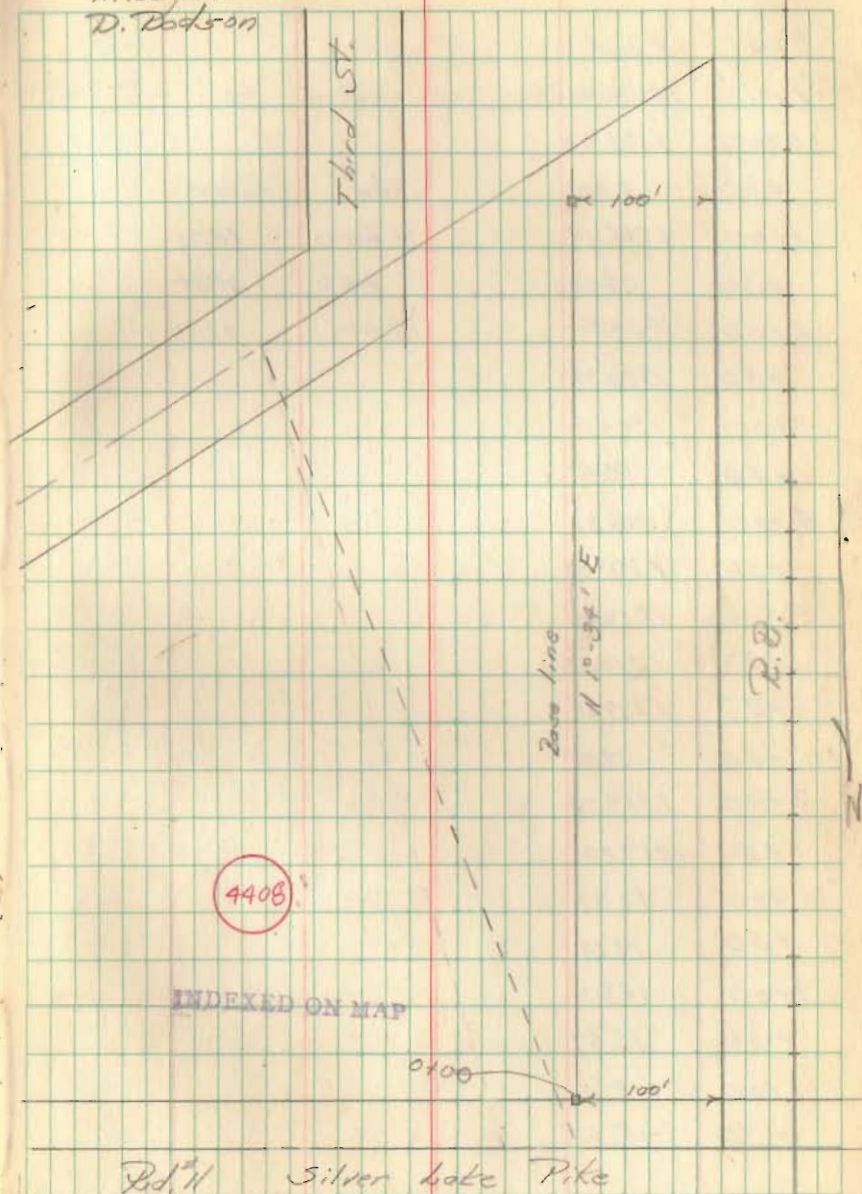


Topographic Survey  
Bridge Works Lot

Party: -  
C. Kayser  
N. Kayser  
D. Dodson

28 Nov. 47

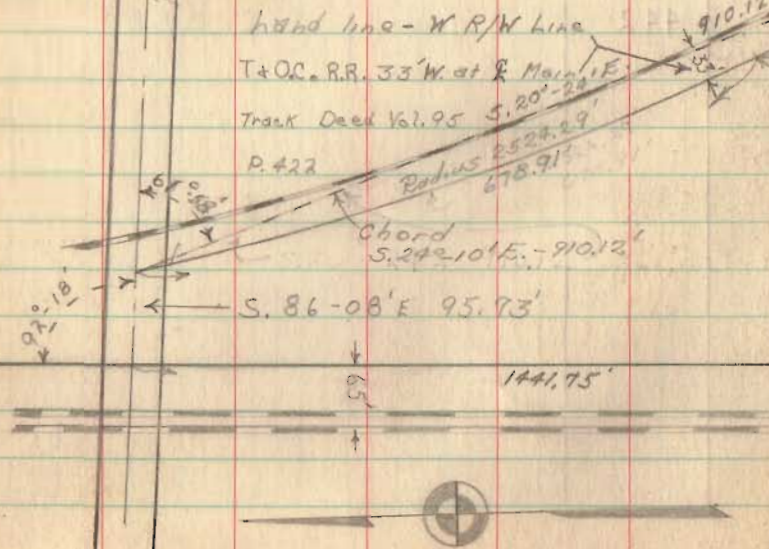
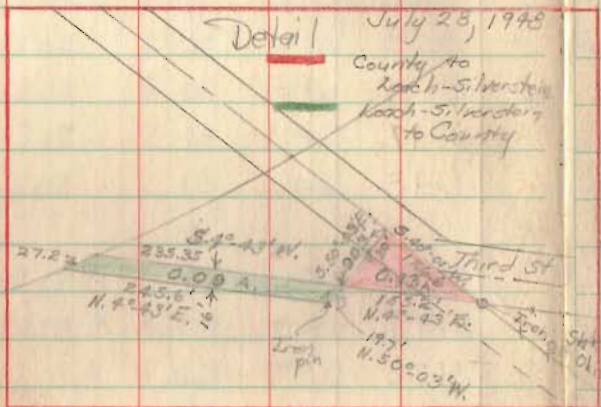
25



Bridge Works Survey

Sec 33 - T-4 - R-14 Lake Twp.

Showing property purchased from  
Hogan County Commissioners by  
Leach-Silverstein Inc. for Westinghouse



Nov. 28, 1947

Note: This sketch shows results  
of calculations only.

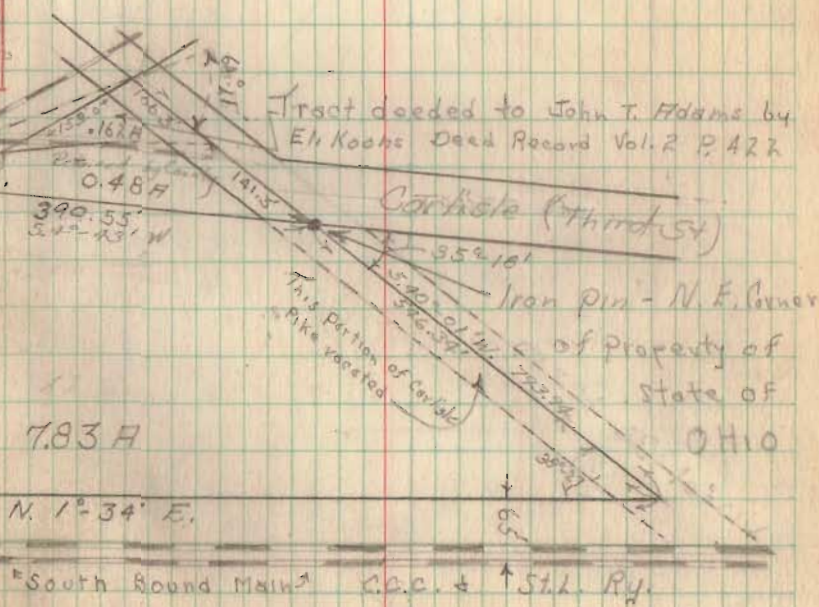
INDEXED ON MAP

4408

See Field Book # 632 pg 71

See plots filed D-36 + D-36A.

- Area of tract deeded to Adams - 0.162 Acres
- Area retained by County - 0.85 Acres
- Area to Leach-Silverstein Inc - 7.83 Acres



Tract deeded to John T. Adams by  
Eli Koons Deed Record Vol. 2 P. 422

Circle (Third St)

Iron pin - N.E. Corner  
of property of  
State of  
OHIO

7.83 A  
N. 1°-34' E.  
South Bound Main C.C. + St. Ry.