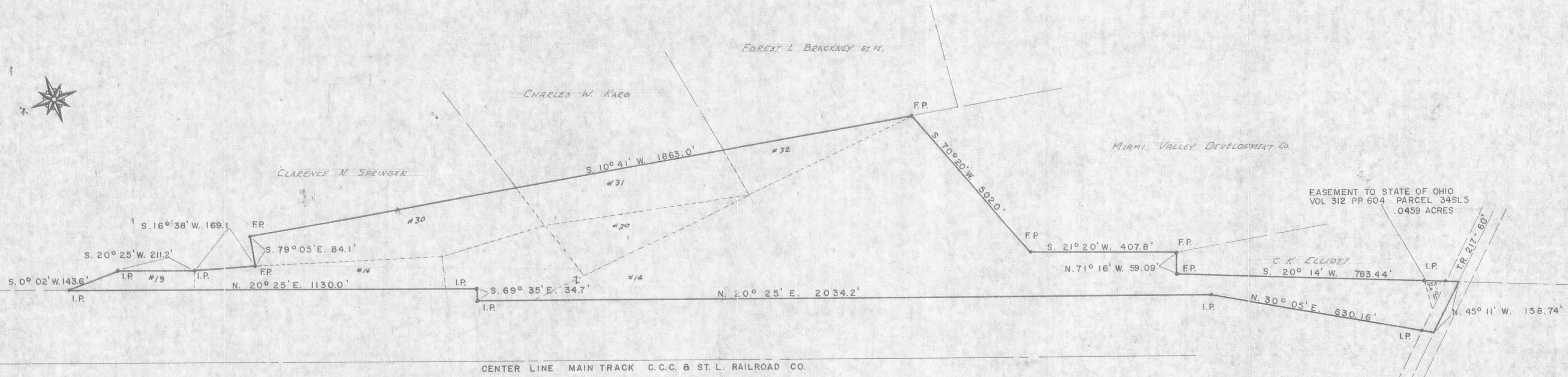


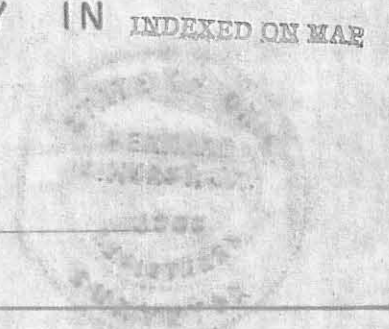
MARCH 1970 SCALE 1" = 200'



A SURVEY OF A 18.83 ACRE TRACT OWNED BY
 THE CLEVELAND CINCINNATI CHICAGO AND SAINT LOUIS RAILWAY COMPANY IN
 V.M.S. 2873 AND V.M.S. 3317, LAKE TOWNSHIP, LOGAN COUNTY, OHIO

SURVEYED BY *Bernard B. Hurst Jr.*
 BERNARD B. HURST JR.
 OHIO REGISTERED SURVEYOR 4868

4639
 IF



LESLIE H. GEESLIN
 REGISTERED SURVEYOR NO. 5248
 P. O. BOX 274
 RUSHSVLVANIA, OHIO 43347

TELEPHONE: (513) 468-2793
 PENN-CENTRAL CORPORATION SURVEY

August, 1979

The following described real estate situated in the State of Ohio, County of Logan, Township of Lake, being part of Virginia Military Surveys 2873 and 3317 and more particularly described as follows:

Beginning at a concrete corner post at the northeast corner of the Midwestern Lovestock Inc.'s 3.74 acre tract; thence with the north line of said 3.74 acre tract N. 70° 26' 39" W. 162.87 feet to an iron bar, passing a concrete corner post at the northwest corner of said 3.74 acre tract at 58.3 feet; thence N. 20° 18' 23" E. 3613.33 feet to an iron bar; thence on a 3661.37 foot radius curve to the right, the chord of which measures N. 23° 54' 26" E. 459.83 feet, to an iron bar; thence 17.00 feet south of and parallel with the north line of a 50.00 foot roadway N. 86° 09' 38" E. 122.17 feet to an iron bar; thence crossing said roadway and with the west line of Karl R. Karg's 53.56 acre tract on a 3557.6 foot radius curve to the left, the chord of which measures S. 24° 25' 07" W. 510.21 feet, to an iron bar; thence with said Karg's west line S. 21° 07' 49" W. 148.82 feet to a concrete post; thence with said Karg's west line S. 19° 49' 44" W. 364.37 feet to a concrete post; thence continuing with said Karg's west line S. 4° 55' 37" W. 178.38 feet to a concrete post; thence with said Karg's west line S. 19° 36' 11" W. 219.05 feet to a concrete post; thence with said Karg's west line S. 17° 05' 44" W. 155.84 feet to a concrete corner post; thence with said Karg's west line S. 79° 16' 05" E. 83.99 feet to a concrete post; thence with said Karg's west line and the west line of Charles W. Karg's 12.88 acre tract and the west line of Koo H. Moon's 15.94 acre tract S. 10° 42' 31" W. 1862.53 feet to a concrete corner post at the northeast corner of the Miami Valley Development company's 11.69 acre tract; thence with said Company's north line S. 70° 25' 18" W. 501.38 feet to a concrete corner post; thence with a west line of said Company's 11.60 acre tract S. 21° 35' 42" W. 407.54 feet to the place of beginning.

Containing 25.336 acres more or less of 1,103,618 Sq. Ft. of which 11.48 acres are in V. M. S. 2873.

Reference is hereby made to a plat of this survey on file with the Logan County Engineer.

INDEXED ON MAP

4639

2D

REFERENCE:

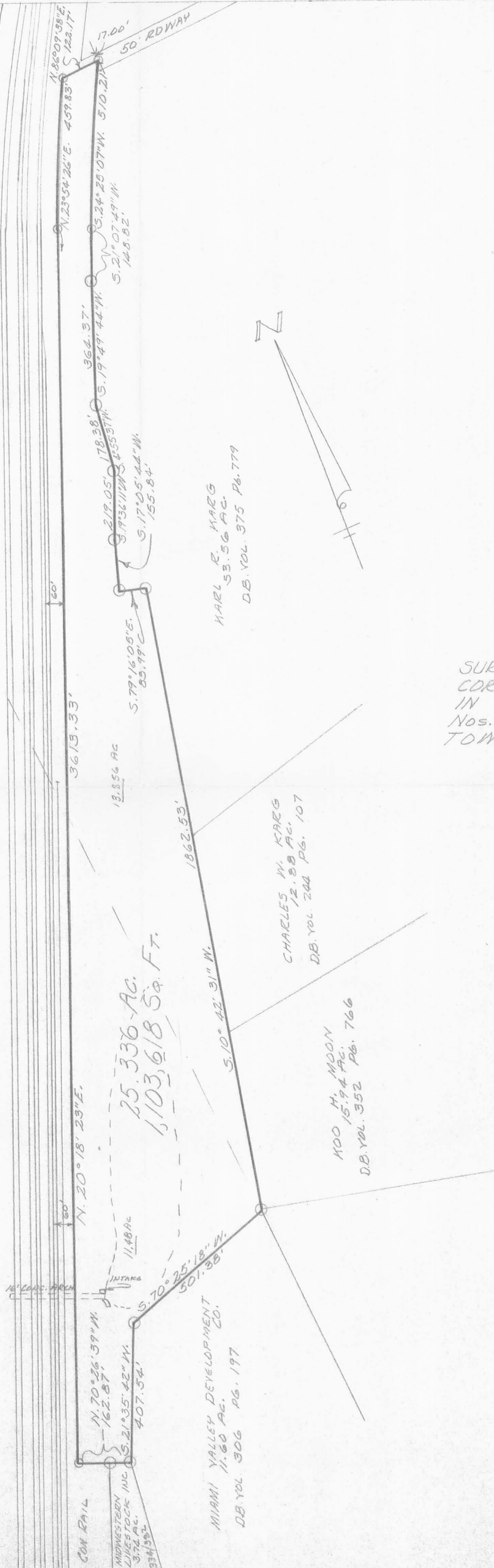
- | | |
|----------------------|--------------------------|
| D.B. Vol. 46 P. 20 | D.B. Vol. 46 P. 3 |
| D.B. Vol. 118 P. 447 | D.B. Vol. 46 P. 36 |
| D.B. Vol. 118 P. 449 | D.B. Vol. 118 P. 353 |
| D.B. Vol. 119 P. 44 | D.B. Vol. 118 P. 504 |
| D.B. Vol. 129 P. 477 | D.B. Vol. 119 P. 43 |
| D.B. Vol. 130 P. 275 | D.B. Vol. 120 P. 106 |
| D.B. Vol. 130 P. 309 | D.B. Vol. 120 P. 269 |
| D.B. Vol. 171 P. 275 | D.B. Vol. 120 P. 360 |
| D.B. Vol. 180 P. 472 | D.B. Vol. 129 P. 501 |
| D.B. Vol. 184 P. 179 | D.B. Vol. 171 P. 495 |
| D.B. Vol. 180 P. 582 | D.B. Vol. 177 P. 239 |
| | D.B. Vol. 177 P. 449-454 |

LEGEND:

- O = CONCRETE CORNER POST
- o = 5/8" IRON BAR SET

SURVEY OF PENN-CENTRAL CORPORATION PROPERTY
 IN VIRGINIA MILITARY SURVEYS
 Nos. 2873 AND 3317, LAKE
 TOWNSHIP, LOGAN CO., OHIO
 AUGUST, 1979
 SCALE 1" = 200'

THIS SURVEY CERTIFIED AS TO
 CORRECTNESS TO THE CLEVELAND,
 CINCINNATI, CHICAGO AND ST. LOUIS
 RAILROAD CO. AND TO THE TITLE
 INSURANCE COMPANY INSURING
 THEIR INTERESTS IN THE
 PREMISES.



4639 2P
 INDEXED ON MAP

Leslie H. Geeslin
 RUSHSVLYANIA, OHIO
 PH. 513-468-2793