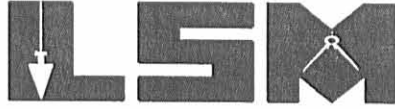


REC'D 12-15-04 SMM/OK
Lee Surveying and Mapping Co., Inc.

Land Surveys • Topography • Subdivisions • Construction Layout

117 N. Madriver St.
Bellefontaine OH 43311



Phone: (937) 593-7335
Fax: (937) 593-7444

**WAMMES
76.000 ACRES**

Lying in Virginia Military Survey 3322, Lake Township, Logan County, Ohio.

Being all of the Shelley J. Wammes 75.74 acre tract as deeded and described in Official Record 434, Page 991 of the Logan County Records of Deeds and being more particularly described as follows:

Beginning at a railroad spike found at the southwest corner of Virginia Military Survey 3322 on the center-line of Township Road 219.

THENCE, with the west line of Virginia Military Survey 3322 and the east lines of the Herbert Holley 5.00 acre tract (Vol. 349, Pg. 738) and the Logan Land Corp. 20.46 acre tract (O.R. 50, Pg. 222), N 4°-40'-54"W, a distance of 1641.69 feet to a stone found over a brick, passing a 5/8 inch iron rod set at 20.00 feet.

THENCE, with the south line of the Logan Land Corp. 27.18 acre tract (O.R. 50, Page 220, Parcel II), N 85°-58'-33"E, a distance of 883.69 feet to a 5/8 inch iron rod set.

THENCE, with the lines of the Lowell E. Overly 3.22 acre tract (O.R. 318, Pg. 806), the following four courses:

S 10°-29'-37"E, a distance of 616.10 feet to a 5/8 inch iron rod set, passing a 5/8 inch iron set at the center-line of a 30 feet wide easement (O.R. 318, Pg. 806) at 550.08 feet.

S 87°-45'-23"E, a distance of 165.00 feet to a 5/8 inch iron rod set.

N 6°-36'-37"E, a distance of 84.00 feet to a 5/8 inch iron rod set.

N 0°-15'-23"W, a distance of 548.82 feet to a 5/8 inch iron rod set.

THENCE, with the south line of the Logan Land Corp. 24.40 acre tract (O.R. 50, Pg. 220, Parcel I), N 85°-58'-33"E, a distance of 981.01 feet to a 5/8 inch iron rod found.

THENCE, with the west line of the Lora Alma Holley, ETAL 35.73 acre tract (O.R. 689, Pg. 269), S 4°-29'-06"E, a distance of 1267.33 feet to a 1/2 inch iron rod found.

THENCE, with the lines of the Herbert Holley 1.04 acre tract (O.R. 274, Pg. 237), the following two courses:

S 85°-30'-54"W, a distance of 130.00 feet to a 5/8 inch iron rod set.

S 4°-28'-30"E, a distance of 350.43 feet to a MAG nail set, passing a 5/8 inch iron rod set at 330.43 feet.

THENCE, with the south line of Virginia Military Survey 3322 and the center-line of Township Road 219 (40 feet wide), S 85°-19'-34"W, a distance of 2013.94 feet to the point of beginning, passing a MAG nail set at the center-line of the aforesaid 30 feet wide easement at 1211.94 feet.

Containing 76.000 acres, of which 0.925 acre is within the highway right-of-way.

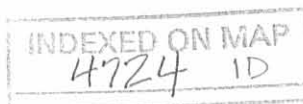
The basis for bearings is the west line of Virginia Military Survey 3322, being N 4°-40'-54"W, and all other bearings are from angles and distances measured in a field survey by Lee Surveying and Mapping Co., Inc. on December 13, 2004.



ORIGINAL STAMP IN GREEN

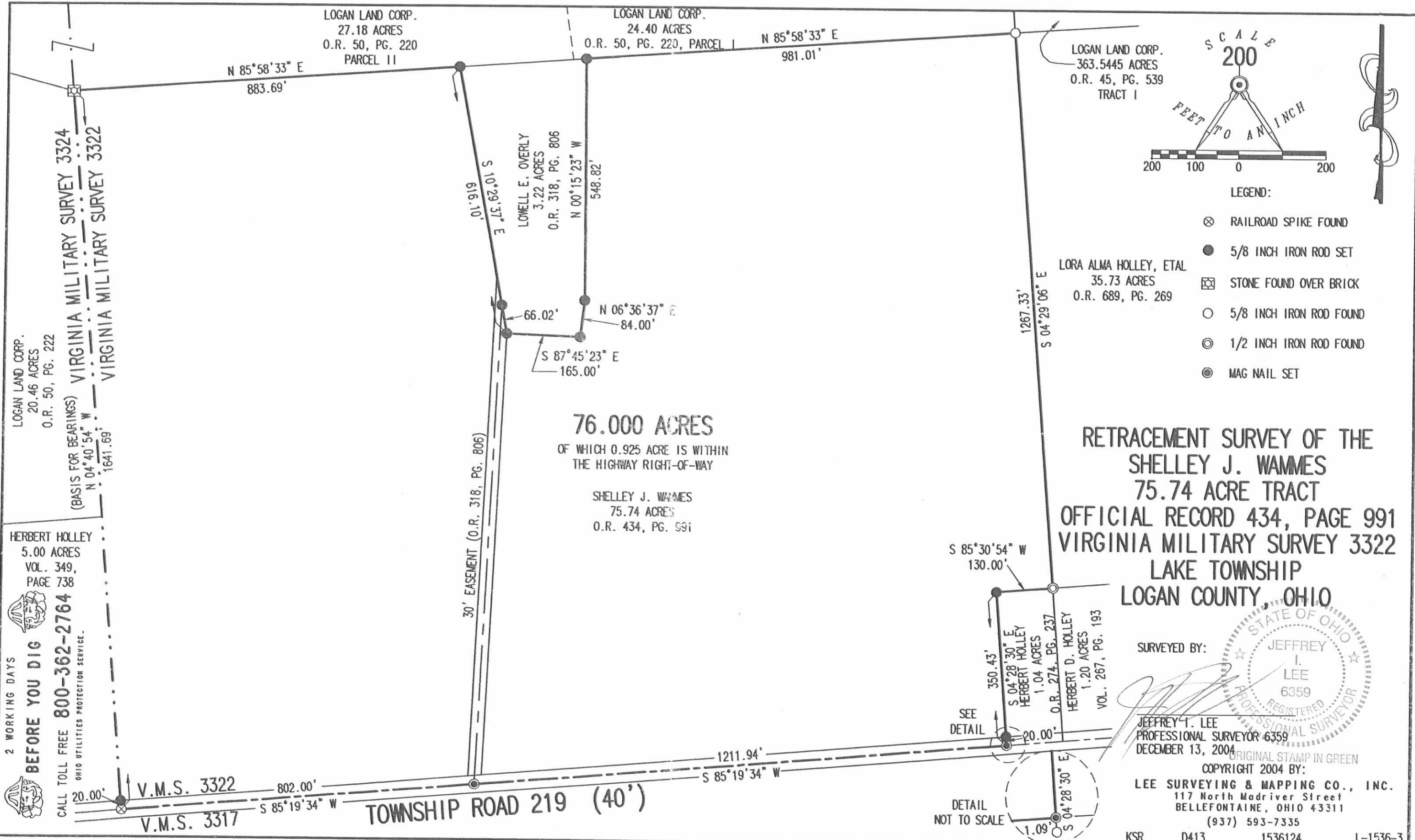
Description prepared by:

A handwritten signature in black ink, appearing to read 'Jeffrey I. Lee'.
Jeffrey I. Lee
Professional Surveyor 6359
December 14, 2004



L-1536

REC'D 12-15-04 SMY



2 WORKING DAYS
BEFORE YOU DIG
 CALL TOLL FREE 800-362-2764
 OHIO UTILITIES PROTECTION SERVICE.

RETRACEMENT SURVEY OF THE
 SHELLEY J. WAMES
 75.74 ACRE TRACT
 OFFICIAL RECORD 434, PAGE 991
 VIRGINIA MILITARY SURVEY 3322
 LAKE TOWNSHIP
 LOGAN COUNTY, OHIO

SURVEYED BY:
 JEFFREY I. LEE
 6359
 REGISTERED PROFESSIONAL SURVEYOR

ORIGINAL STAMP IN GREEN
 COPYRIGHT 2004 BY:
 LEE SURVEYING & MAPPING CO., INC.
 117 North Madriver Street
 BELLEFONTAINE, OHIO 43311
 (937) 593-7335

INDEXED ON MAP
 4724 1P

Miller to Overly Survey Description

September, 1970

Being situated in Lake Township, Logan County, Ohio;
and being a part of V.M.S. #3322.

Beginning at the southwest corner of V.M.S. #3322.

Thence with the center of Township Road # 219
N 86° - 19'E 817.0 feet.

Thence with the east side of a 30.0 feet right of
way N 3° - 00'E 1022.5 feet to a corner post. Said post
is the true point of beginning for this description.

Thence S 88° - 14'W 165.0 feet to a corner post.

Thence N 6° - 08'E 84.0 feet to a corner post.

Thence N 0° - 44'W 552.0 feet to a corner post in the
south line of I. Ward's 48.50 acre tract.

Thence with said south line of said 48.50 acre tract
S 83° - 59'W 285.0 feet to an iron.

Thence S 10° - 59'E 612.0 feet to the place of beginning.

Containing 3.62 acres more or less. Being surveyed from
a 81.25 acre tract.

Right of Way Easement:

Beginning at a point in the center of Township Road #219
that bears N 86° - 19'E 817.0 feet from the southwest corner
of said V.M.S. #3322.

Thence N 3° - 00'E 1022.5 feet to a corner post. (This
is the second mentioned course in the above description.

Thence N 10° - 59'W 106.3 feet.

Thence S 3° - 00'W 1133.0 feet to the center of Road #219.

Thence with the center of Township Road # 219 N 86°-19'E
30.0 feet to the place of beginning.

Surveyor 4271

20
4724
UNMARKED ON MAP

Overly Survey
 U.M.S. 3322
 Lake Twp

Sept, 1970

58

