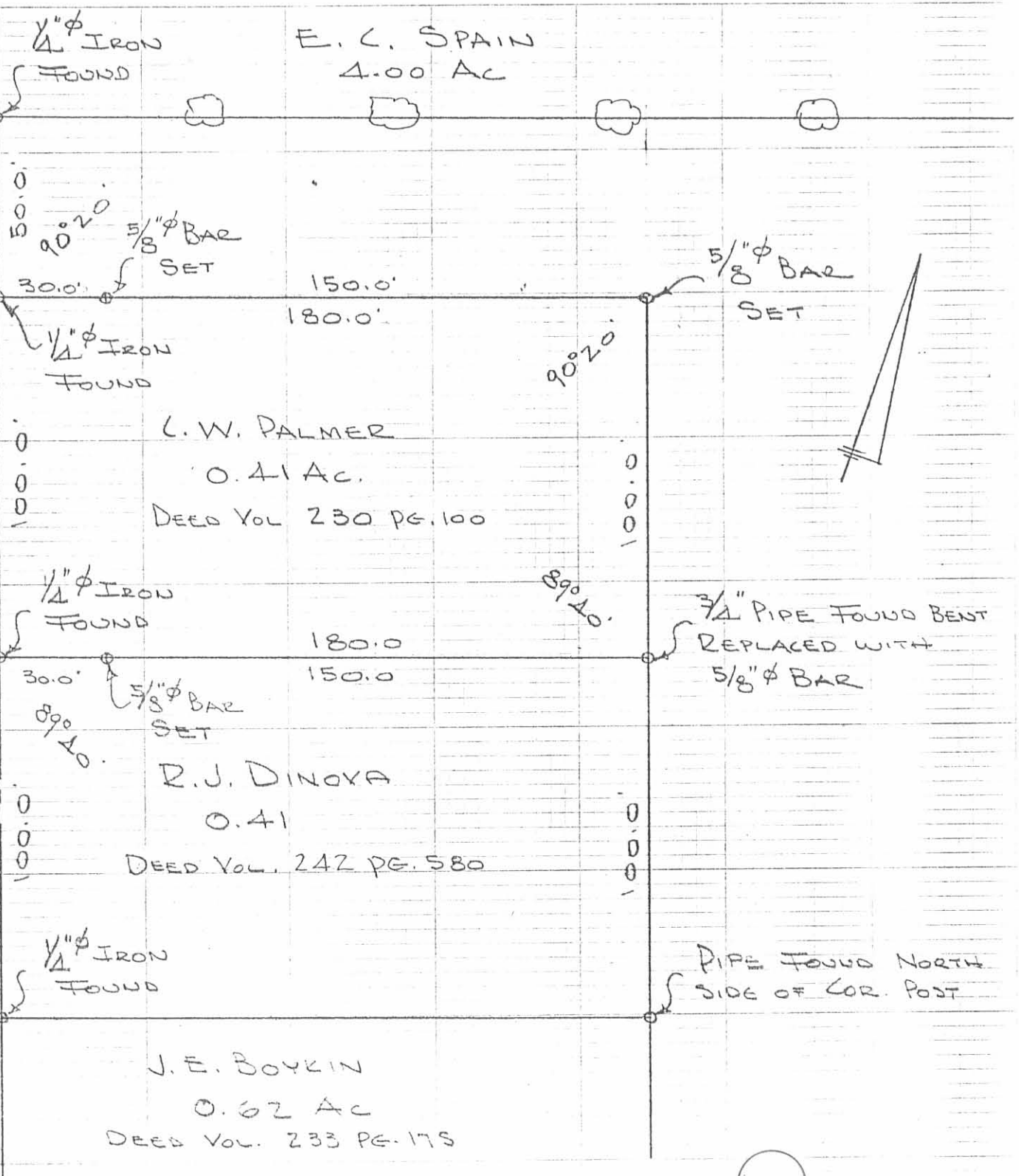


ROAD
LUDLOW



5135 IP

PALMER SURVEY
 V.M.S. 10086-10198
 LAKE TOWNSHIP
 LOGAN COUNTY, OHIO
 MAY 18, 1974
 SCALE 1" = 40'

INDEXED ON MAP
 DAN L. DORSON
 REG. SURVEYOR 4270
 BELLEFONTAINE, O
 BK 20/55

PALMER SURVEY
LAKE TWP

- A - 1/4" d Pin Found (Bolt?)
- B - " " "
- C - " " "
- D - " " "
- E - 3/4" pipe Found Bent-replaced with 5/8" ϕ Bar
- F - 5/8" ϕ Bar found
- G - Pipe N. side of wood post found OK for line & dist.

NOTE DEEDS MAKE ANGLE ACE = $89^{\circ}37'$

INDEXED ON MAP
5135

Dodson
Artis
McWardy

5/18/74

55

