

Parker to Holley Survey

The following described real estate situated in the Township of Lake, County of Logan, State of Ohio and being a part of Virginia Military Survey No. 3324 and being more particularly described as follows:

Beginning at a R. R. Spike in the centerline of T. R. No. 219 at the southeast corner to Raymond C. Parker's present 18.43 Acre tract, said R. R. Spike also being the southeast corner to V. M. S. No. 3324 and the southwest corner to V. M. S. No. 3322;

Thence with the line between V. M. S. No. 3322 and 3324, N. 5° 59' W. 669.90 feet to a wood corner post, passing through an old wood corner post at 19.00 feet, said first wood corner post being the southeast corner to Edna E. Newell's present 20.46 Acre tract and the northeast corner to Parker's tract;

Thence with Newell's south line, S. 84° 25' W. 325.00 feet to an iron bar;

Thence S. 5° 59' E. 669.90 feet to a R. R. Spike in the centerline of T. R. No. 219, passing through an iron bar at 649.90 feet;

Thence with the centerline of T. R. No. 219, N. 84° 25' E. 325.00 feet to the place of beginning, containing 5.00 Acres, more or less.

The above described parcel being surveyed off the east side of Raymond C. Parker's present 18.43 Acre tract.

I hereby certify that this is a true and accurate description of a survey made by me on October 9, 1973.

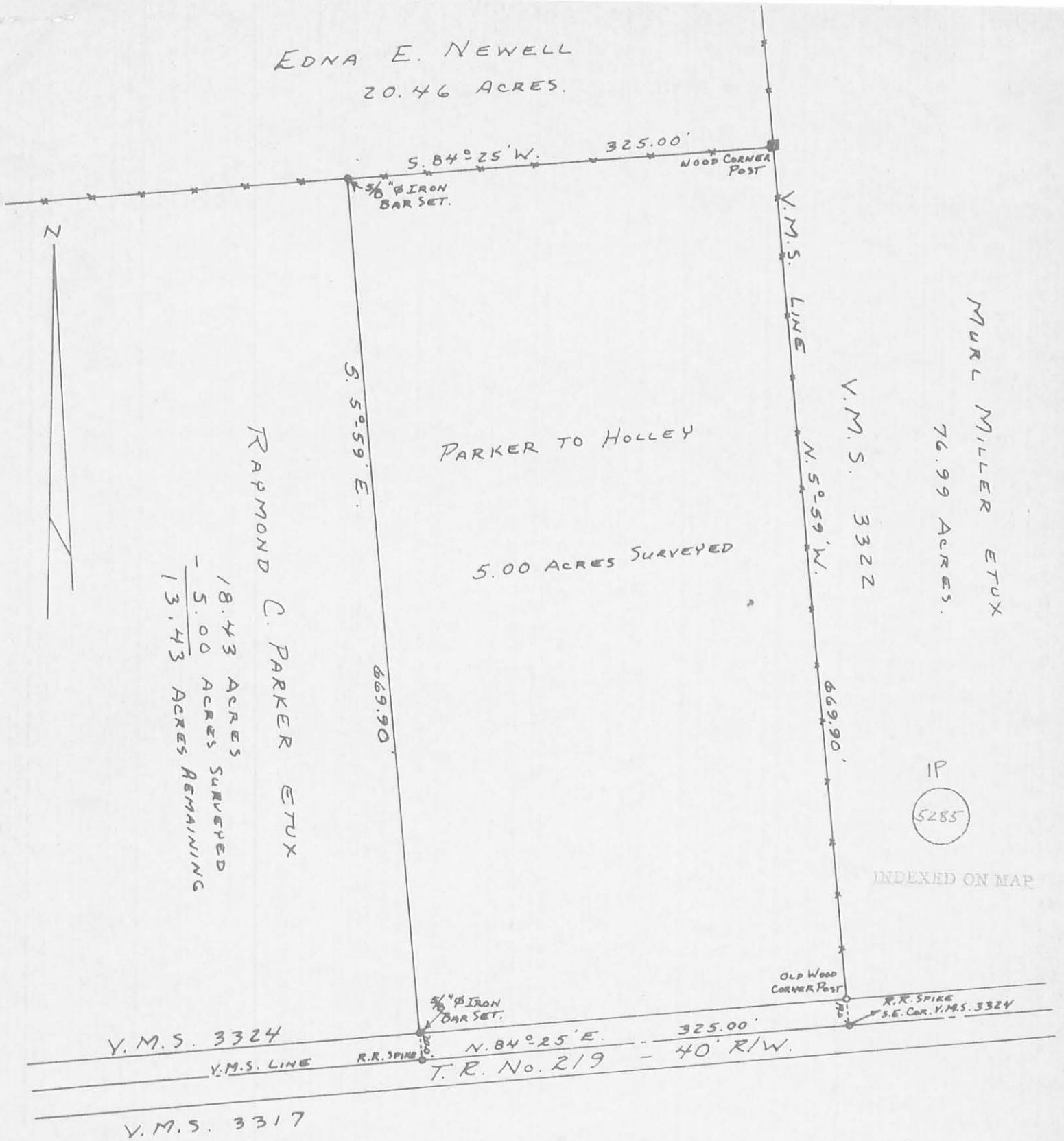
Daniel E. Gilbert
Daniel E. Gilbert, P.S.
Reg. Sur. No. 5402
1041 N. Main St.
Bellefontaine, Ohio 43311

10

5285

INDEXED ON MAP

EDNA E. NEWELL
20.46 ACRES.



RAMOND C. PARKER ETUX

| | |
|--------|-----------------|
| 18.43 | ACRES SURVEYED |
| - 5.00 | ACRES REMAINING |
| 13.43 | ACRES REMAINING |

MURL MILLER ETUX
76.99 ACRES.

IP
5285

INDEXED ON MAP

PARKER - HOLLEY SURVEY
V.M.S. No. 3324
LAKE TOWNSHIP
LOGAN COUNTY, OHIO
OCTOBER 9, 1973

SCALE: 1" = 100'

SURVEYED AND PLATTED BY:
DANIEL E. GILBERT, P.S.
REG. SUR. No. 5402
1041 N. MAIN ST.
BELLEFONTAINE, OHIO 43311