

2016-11-13

Situated in Lake Township, Logan County, Ohio and being in Virginia Military Survey 4478 and better described as follows:

Beginning at a point in the center-line of County Road #10, said road also known as Eastern Avenue, said point lying 1216.10 feet south-easterly along the center-line of said county road from the intersection with East Columbus Avenue.

Thence, S 60°-32' W, a distance of 1118.12 feet to an iron rod set for a corner of this tract.

Thence, S-27°-20' E, a distance of 825.13 feet to an iron rod set for the Southwest corner of this tract.

Thence, N 80°-50' E, a distance of 212.72 feet to an iron rod set for the southeast corner of this tract.

Thence N 60°-13' E, on a line dividing a 75.29 acre tract and a 26.57 acre tract, a distance of 1249.59 feet to point set in the south line of a 1.77 acre lot in the name of R. S. Fogt.

Thence, with the south line of said 1.77 acre lot, N 71°-02' W, a distance of 258.00 feet to the southwest corner of a 0.73 acre lot in the name of J. L. Pugh.

Thence, with the west line of said 0.73 acre lot, N 31°-48' E, a distance of 300.3 feet to point set in the center line of county road No. 10.

Thence, with the center-line of said road, N 80°-48' W a distance of 176.90 to an angle in the road (designated in the county engineer's books as being station 16+00).

Thence, continuing with the center-line of the road, N 60°-13' W, a distance of 383.90 feet to the point of beginning containing 20.97 acres.

Survey and description by William G. Edwards, Registered Surveyor #4792.

1D-1

5292

INDEXED ON MAP

JUNE 12, 1973

Situated in Lake Township, Logan County, Ohio and being in Virginia Military Survey 4478 and partially lying in the City of Bellefontaine:

Beginning at a point in the center-line of Eastern Avenue, said point lying S $69^{\circ}-13'$ E a distance of 624.80 feet from the intersection with East Columbus Avenue. Said point also being the Northeast corner of a 60 foot lot in the name of Holt.

Thence, with Holt's east line, S $6^{\circ}-23'$ W, a distance of 30.97 feet to an iron rod set in the south line of Eastern Avenue,

Thence continuing along same line S $6^{\circ}-23'$ W a distance of 119.03 feet to an iron rod set for the southwest corner of this lot,

Thence, S $67^{\circ}-46'$ E, a distance of 77.64' to a point set for the southeast corner, the same being the southwest corner of a 0.40 acre lot in the name of Jack Manning.

Thence, with Manning's west line, N $13^{\circ}-12'$ E, a distance of 148.73 feet to the center-line of Eastern Avenue

Thence, with center-line of Eastern Avenue, N $69^{\circ}-23'$ W, a distance of 57.40 to a point on the corporation line.

Thence, continuing with the center-line N $69^{\circ}-13'$ E, a distance of 37.90 feet to the point of beginning, containing 0.296 acres of which 0.13 acres lies in the City of Bellefontaine.

Survey and description by William G. Edwards, Registered Surveyor #4792.

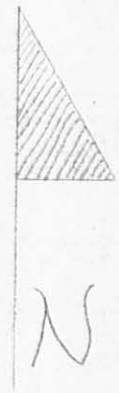
0.296
- 0.13 - City

0.166 - Lake Twp.

10-2

5292

INDEXED ON MAP



Scale 1" = 200'
Date 6-12-73

I HEREBY THE ABOVE PLAT TO BE CORRECT.
William H. Edwards
Registered Surveyor No. 4792

5292 IP

INDEXED ON MAP

REVISIONS	BY	DATE
1		
2		
3		
4		
5		
6		
7		
8		
9		

C.E. KNOWLTON FARM		SHEET 1 OF 1 SHEETS
SURVEY OF LANDS TO REMAIN IN NAME OF C.E. KNOWLTON.		
PART OF V.M.S. 4478, LAKE TWP. LOGAN COUNTY, OHIO ALSO PART OF CITY OF BELLEFONTAINE, OHIO		
KNOWLTON CONSTRUCTION CO. BELLEFONTAINE, OHIO		
DRAWN BY W.G.E.	DATE 6-12-73	K-1317-2
CHECKED BY	DATE	

DEED & SURVEY REFERENCES:

REFERENCE DEEDS ARE SHOWN HEREON

LOGAN COUNTY ENGINEER'S MAP ROOM
 FILES: 5292, 901, 6084, 7079, 1117, 7296,
 5746 AND 1789

LEGEND:

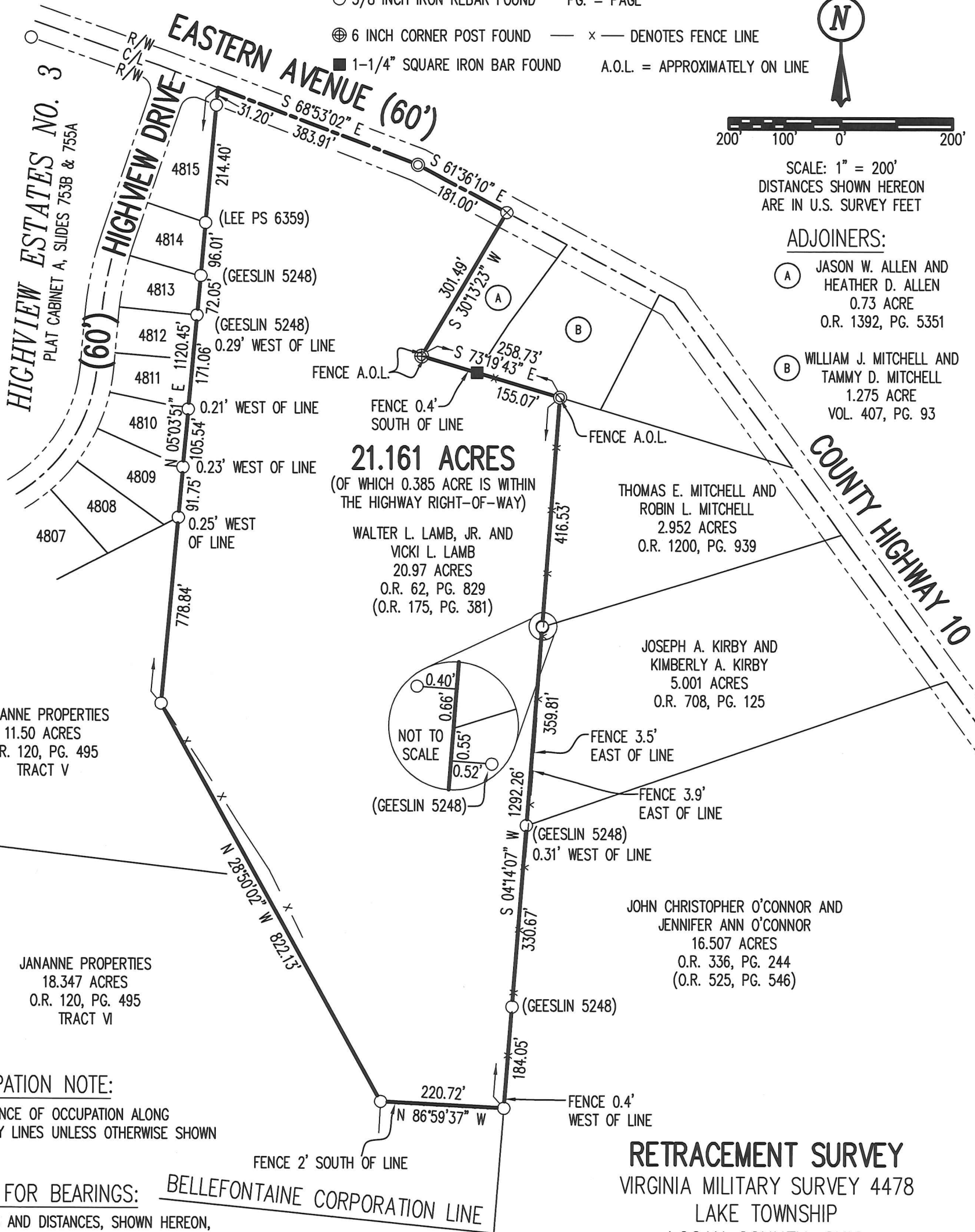
- ⊙ 1 INCH IRON REBAR FOUND R/W = RIGHT-OF-WAY
- ⊙ 3/4 INCH IRON REBAR FOUND C/L = CENTER-LINE
- ⊗ 1/2 INCH IRON REBAR FOUND O.R. = OFFICIAL RECORD
- 5/8 INCH IRON REBAR FOUND PG. = PAGE
- ⊕ 6 INCH CORNER POST FOUND — x — DENOTES FENCE LINE
- 1-1/4" SQUARE IRON BAR FOUND A.O.L. = APPROXIMATELY ON LINE



SCALE: 1" = 200'
 DISTANCES SHOWN HEREON
 ARE IN U.S. SURVEY FEET

ADJOINERS:

- (A) JASON W. ALLEN AND
 HEATHER D. ALLEN
 0.73 ACRE
 O.R. 1392, PG. 5351
- (B) WILLIAM J. MITCHELL AND
 TAMMY D. MITCHELL
 1.275 ACRE
 VOL. 407, PG. 93



21.161 ACRES
 (OF WHICH 0.385 ACRE IS WITHIN
 THE HIGHWAY RIGHT-OF-WAY)

WALTER L. LAMB, JR. AND
 VICKI L. LAMB
 20.97 ACRES
 O.R. 62, PG. 829
 (O.R. 175, PG. 381)

THOMAS E. MITCHELL AND
 ROBIN L. MITCHELL
 2.952 ACRES
 O.R. 1200, PG. 939

JOSEPH A. KIRBY AND
 KIMBERLY A. KIRBY
 5.001 ACRES
 O.R. 708, PG. 125

JOHN CHRISTOPHER O'CONNOR AND
 JENNIFER ANN O'CONNOR
 16.507 ACRES
 O.R. 336, PG. 244
 (O.R. 525, PG. 546)

JANANNE PROPERTIES
 11.50 ACRES
 O.R. 120, PG. 495
 TRACT V

JANANNE PROPERTIES
 18.347 ACRES
 O.R. 120, PG. 495
 TRACT VI

OCCUPATION NOTE:

NO EVIDENCE OF OCCUPATION ALONG
 BOUNDARY LINES UNLESS OTHERWISE SHOWN

BASIS FOR BEARINGS:

BELLEFONTAINE CORPORATION LINE

BEARINGS AND DISTANCES, SHOWN HEREON,
 ARE DERIVED FROM GPS OBSERVATIONS
 BASED ON GRID NORTH, OHIO STATE PLANE
 COORDINATE SYSTEM, NORTH ZONE, NAD83
 (2011, EPOCH 2010), WITH THE
 CENTER-LINE OF EASTERN AVENUE, HAVING A
 BEARING OF S 68°53'02" E.

THIS SURVEY WAS PREPARED IN THE
 ABSENCE OF A COMPLETE AND ACCURATE
 TITLE SEARCH AND DOES NOT GUARANTEE
 TITLE.

RETRACEMENT SURVEY
 VIRGINIA MILITARY SURVEY 4478
 LAKE TOWNSHIP
 LOGAN COUNTY, OHIO



Daniel A. Neer
 DANIEL A. NEER
 PROFESSIONAL SURVEYOR NO. 8533
 APRIL 28, 2021

COPYRIGHT 2021 BY:

117 N. Madriver Street • Bellefontaine, OH 43311
 (937) 593-7335 • www.dlz.com
 Project #2121-2057.00

DRAWN BY:	DESCRIPTION	REV. NO.	DATE
KSS			4/28/2021

INDEXED ON MAP
 5292