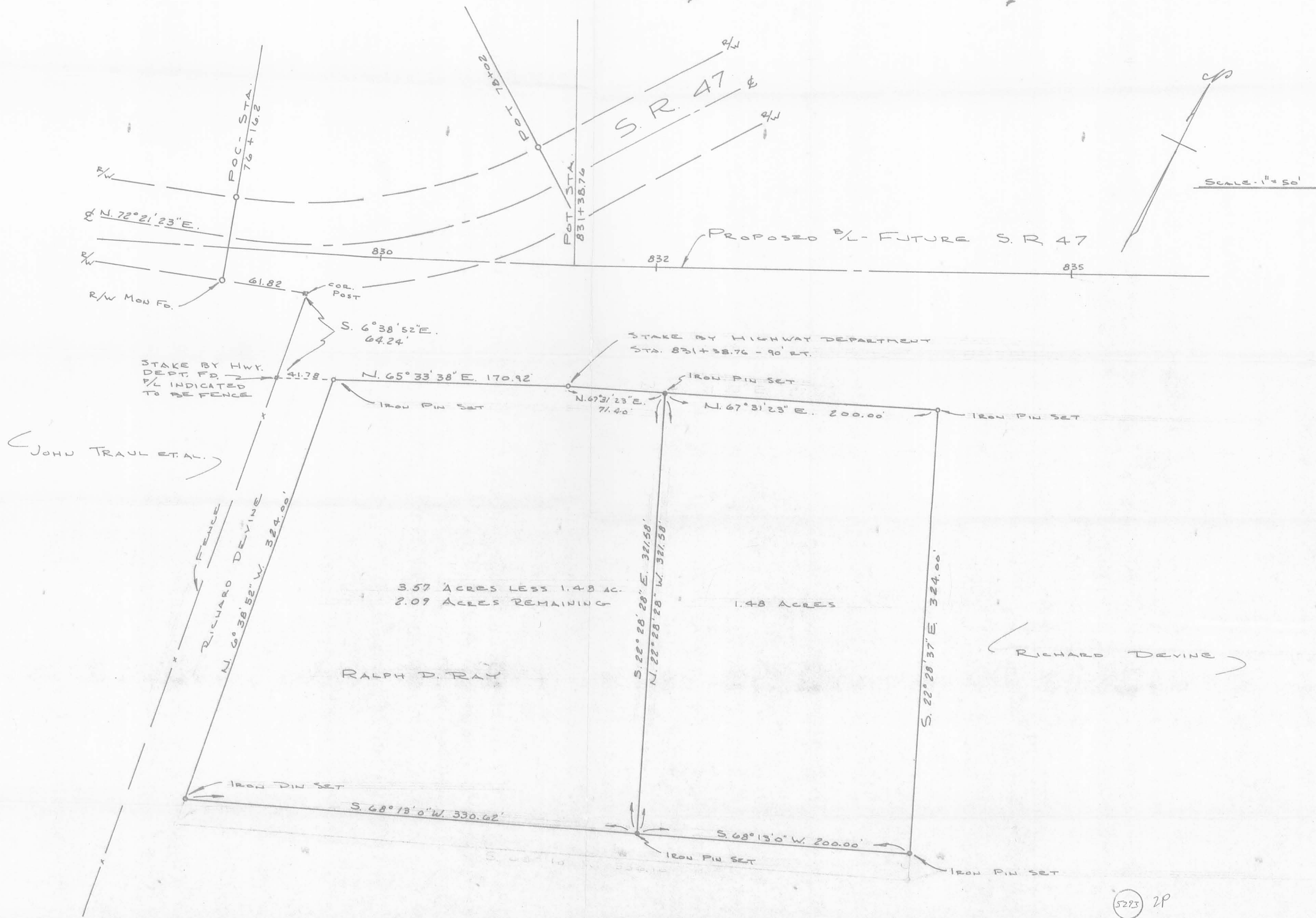


Ced.
 05/27/13
 P.S. # 3151

A SURVEY OF 2.57 ACRES OUT OF RICHARD J. DEVINE'S 144.55 ACRES IN V.M.S. 3442 & 3683
 IN LAKE TWP, LOGAN COUNTY, OHIO
 BY LARRY E. BLOSSER DIT# 1199

5293 IP
 INDEXED ON MAP



Scale - 1" = 50'

JOHN TRAUER ET AL.

RICHARD DEVINE

RALPH D. RAY

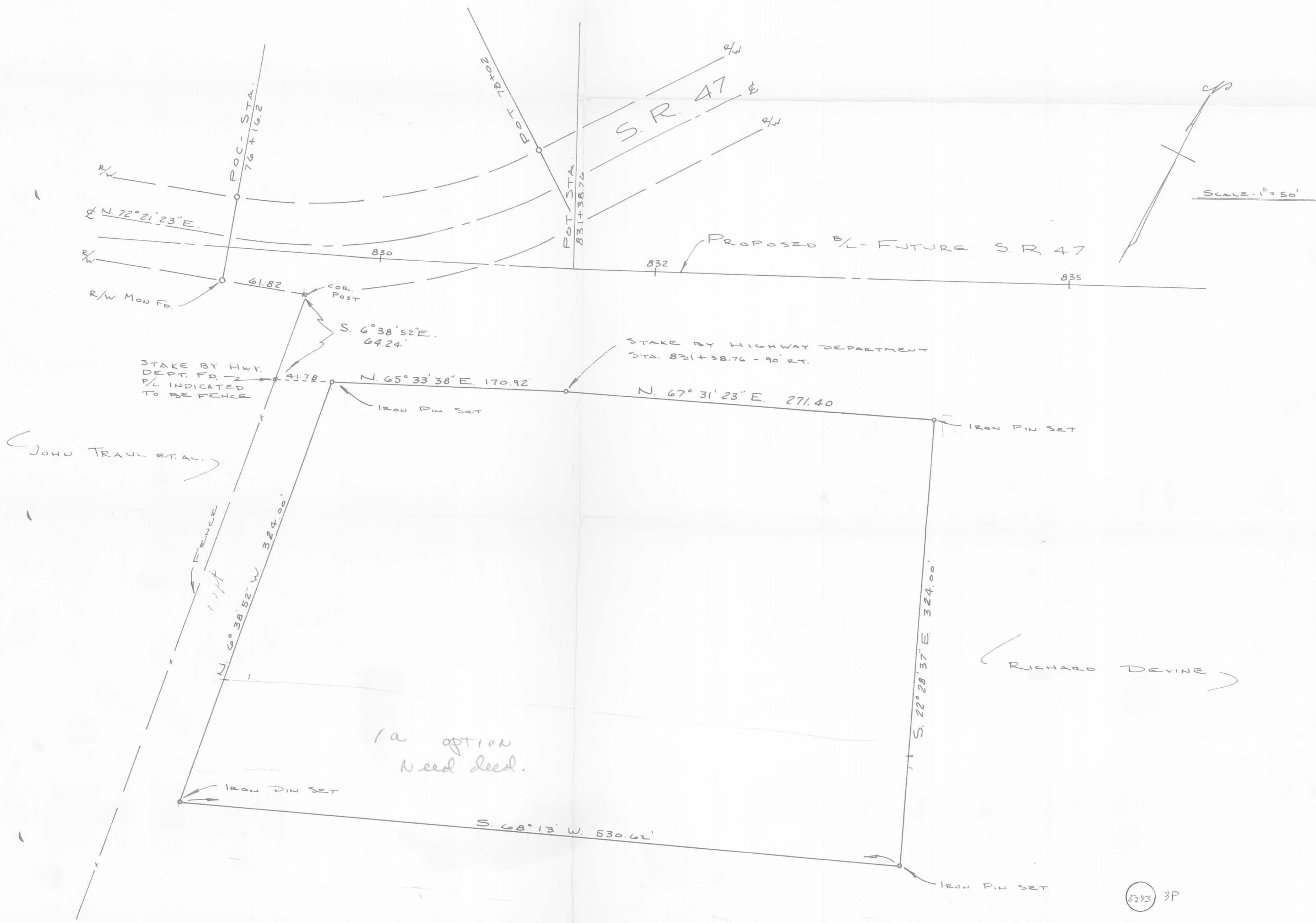
3.57 ACRES LESS 1.48 AC.
2.09 ACRES REMAINING

1.48 ACRES

5223 2P

INDEXED ON MAP

<p>NOTE</p> <p>PLAT REVISED SEPT. 9, 1973 TO INDICATE A 1.48 ACRE SURVEY OUT OF THE 3.57 ACRE SURVEY OF JUNE 6, 1973.</p> <p>SURVEYED BY LARRY E. BLOSSER SIT # 1199</p> <p>CHECKED BY _____</p>	<p>A SURVEY OF RALPH D. RAY'S 2.57 ACRES PLUS A 1.00 ACRE TRACT OUT OF RICHARD J. DEVINE'S 14.55 ACRES IN V.M.S. 3442 & 3683 IN LAKE TOWNSHIP, LOGAN COUNTY, OHIO.</p> <p>SURVEYED BY LARRY E. BLOSSER SIT # 1199 6/6/73</p> <p>CHECKED BY: Cecil E. Mangrini REG. SURVEYOR # 3151</p>
---	--



JOHN TRAUER ET AL.

RICHARD DEVINE

1a option
Need deed.

5293 3P

INDEXED ON MAP

A SURVEY OF RALPH D. RAY'S 2.57 ACRES PLUS A 1.00 ACRE
 TRACT OUT OF RICHARD J. DEVINE'S 144.55 ACRES IN V.M.S. 3442 & 3683
 IN LAKE TOWNSHIP, LOGAN COUNTY, OHIO.
 SURVEYED BY LARRY E. BLOSSER
 SIT # 1199
 6/6/73
 CHECKED BY: Cecil E. Mengerink