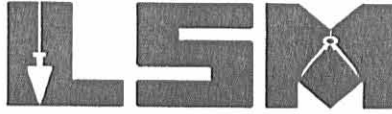


REC'D 5-19-04 SUMAK
Lee Surveying and Mapping Co., Inc.

Land Surveys • Topography • Subdivisions • Construction Layout

117 N. Madriver St.
Bellefontaine OH 43311



Phone: (937) 593-7335
Fax: (937) 593-7444

**RAID
6.980 ACRES**

Lying in Virginia Military Survey 4498, Lake Township, Logan County, Ohio.

Being out of the Duane S. Raid original 12.107 acre tract as deeded and described in Official Record 285, Page 548 of the Logan County Records of Deeds and being more particularly described as follows:

Beginning at a 5/8 inch iron rod found on the north line of Virginia Military Survey 4498 at the intersection of the south right-of-way of Township Road 185 (30 feet wide) and the east line of Lake Township.

THENCE, with the line between Lake Township and Jefferson Township and the west line of the Rick A. Liebhart 6.664 acres (O.R. 561, Pg. 75, Tract II), S 0°-56'-41"E, a distance of 870.11 feet to a 5/8 inch iron rod found.

THENCE, with the north lines of the Jananne Properties 86.33 acres (O.R. 120, Pg. 479, Tract V) and the Gary J. Barger original 52.529 acres (Vol. 401, Pg. 966), S 85°-31'-05"W, a distance of 442.86 feet to a 5/8 inch iron rod set in the fence line.

THENCE, next to a fence line, N 0°-57'-49"W, a distance of 468.44 feet to a 5/8 inch iron rod set.

THENCE, N 44°-03'-47"E, a distance of 162.63 feet to a 5/8 inch iron rod set.

THENCE, N 89°-03'-47"E, a distance of 141.25 feet to a 5/8 inch iron rod set.

THENCE, N 1°-24'-55"W, a distance of 313.75 feet to a 5/8 inch iron rod set.

THENCE, with the north line of Virginia Military Survey 4498 and the south right-of-way of Township Road 185, N 88°-58'-04"E, a distance of 188.48 feet to the point of beginning.

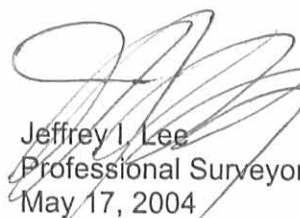
Containing 6.980 acres.

The basis for bearings is the line between Lake Township and Jefferson Township, being S 0°-56'-41"E, and all other bearings are from angles and distances measured in a field survey by Lee Surveying and Mapping Co., Inc. on May 17, 2004.

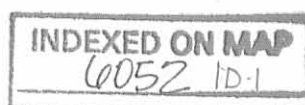
Description prepared by:



ORIGINAL STAMP IN GREEN


Jeffrey I. Lee
Professional Surveyor 6359
May 17, 2004

L-3814



REC'D 5-19-04 SWY AK
Lee Surveying and Mapping Co., Inc.

Land Surveys • Topography • Subdivisions • Construction Layout

117 N. Madriver St.
Bellefontaine OH 43311



Phone: (937) 593-7335
Fax: (937) 593-7444

**RAID
5.119 ACRES**

Lying in Virginia Military Survey 4498, Lake Township, Logan County, Ohio.

Being out of the Duane S. Raid original 12.107 acre tract as deeded and described in Official Record 285, Page 548 of the Logan County Records of Deeds and being more particularly described as follows:

Beginning at a 5/8 inch iron rod found on the north line of Virginia Military Survey 4498 at the intersection of the south right-of-way of Township Road 185 (30 feet wide) and the east line of Lake Township.

THENCE, with the north line of Virginia Military Survey 4498 and the south right-of-way of Township Road 185, S 88°-58'-04"W, a distance of 188.48 feet to a 5/8 inch iron rod set at the TRUE POINT OF BEGINNING.

THENCE, S 1°-24'-55"E, a distance of 313.75 feet to a 5/8 inch iron rod set.

THENCE, S 89°-03'-47"W, a distance of 141.25 feet to a 5/8 inch iron rod set.

THENCE, S 44°-03'-47"W, a distance of 162.63 feet to a 5/8 inch iron rod set.

THENCE, next to a fence line, S 0°-57'-49"E, a distance of 468.44 feet to a 5/8 inch iron rod set in the fence line.

THENCE, with the north line of the Gary J. Barger original 52.529 acre tract (Vol. 401, Pg. 966), S 85°-31'-05"W, a distance of 243.37 feet to a 5/8 inch iron rod found.

THENCE, with the east line of the Timothy M. Smith, Sr. original 17.205 acre tract (O.R. 435, Pg. 667), N 0°-57'-49"W, a distance of 671.71 to a point, referenced by a 5/8 inch iron rod found N 0°-57'-49"W 0.36 feet.

THENCE, with the lines of the Charles Hill 3.365 acre tract (O.R. 624, Pg. 502), the following two courses:

N 89°-03'-47"E, a distance of 347.64 feet to a 5/8 inch iron rod found.

N 1°-24'-55"W, a distance of 240.27 feet to a 5/8 inch iron rod found.

THENCE, with the north line of Virginia Military Survey 4498 and the south right-of-way of Township Road 185, N 88°-58'-04"E, a distance of 151.00 feet to the point of beginning.

Containing 5.119 acres.

The basis for bearings is the line between Lake Township and Jefferson Township, being S 0°-56'-41"E, and all other bearings are from angles and distances measured in a field survey by Lee Surveying and Mapping Co., Inc. on May 17, 2004.

Description prepared by:

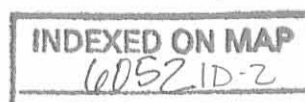


ORIGINAL STAMP IN GREEN

A handwritten signature in black ink, appearing to read 'Jeffrey I. Lee'.

Jeffrey I. Lee
Professional Surveyor 6359
May 17, 2004

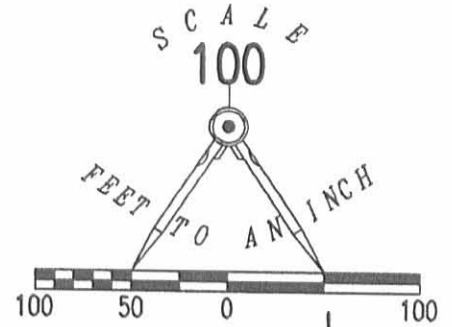
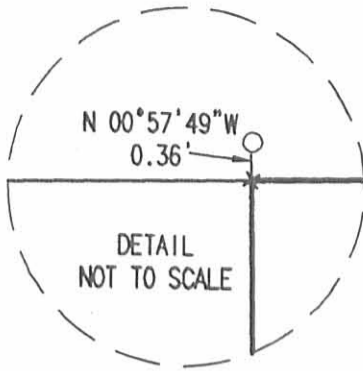
L-3814



REC'D 5-19-04 SMJ/ML

LEGEND:

- 5/8 INCH IRON ROD FOUND
- 5/8 INCH IRON ROD SET
- ⊙ MAG NAIL SET



TOWNSHIP ROAD 185 (30')

VIRGINIA MILITARY SURVEY 4478-C
VIRGINIA MILITARY SURVEY 4498

CHARLES HILL
3.365 ACRES
O.R. 624, PG. 502

SEE
DETAIL

N 89°03'47" E
347.64'

N 89°03'47" E
141.25'

N 44°03'47" E
162.63'

5.119 ACRES

6.980 ACRES

TIMOTHY M. SMITH, SR.
ORIGINAL 17.205 ACRES
O.R. 435, PG. 667

N 00°57'49" W
671.71'

N 00°57'49" W
468.44'

870.11'
S 00°56'41" E
(BASIS FOR BEARINGS)

RICK A. LIEBHART
6.664 ACRES
O.R. 561, PG. 75
TRACT 11

243.37'
S 85°31'05" W

442.86'
S 85°31'05" W

GARY J. BARGER
ORIGINAL 52.529 ACRES
VOL. 401, PG. 966

JANANNE PROPERTIES
86.33 ACRES
O.R. 120, PG. 479
TRACT V

LAKE TOWNSHIP
JEFFERSON TOWNSHIP

SURVEY OF TWO TRACTS OUT OF THE
DUANE S. RAID
ORIGINAL 12.107 ACRES
OFFICIAL RECORD 285, PAGE 548
VIRGINIA MILITARY SURVEY 4498
LAKE TOWNSHIP
LOGAN COUNTY, OHIO



SURVEYED BY:

JEFFREY I. LEE
PROFESSIONAL SURVEYOR 6359
MAY 17, 2004

COPYRIGHT 2004 BY:

LEE SURVEYING & MAPPING CO., INC.
117 North Madriver Street
BELLEFONTAINE, OHIO 43311
(937) 593-7335

2 WORKING DAYS
BEFORE YOU DIG
CALL TOLL FREE 800-362-2764
OHIO UTILITIES PROTECTION SERVICE.

INDEXED ON MAP
6052 IP

LESLIE H. GEESLIN
REGISTERED SURVEYOR 5248
P. O. BOX 274
RUSHSVLVANIA, OHIO 43347
TELEPHONE: (513) 468-2793

KINNARD SURVEY

December 13, 1994

The following described real estate situated in the State of Ohio, County of Logan, Township of Lake, being part of Virginia Military Survey 4498 and more particularly described as follows:

Beginning at a 5/8 inch iron bar set at the intersection of the south line of said T. R. 185 and the line between Jefferson and Lake townships.

Thence with said line between Jefferson and Lake townships S. 0° 56' 41" E. 870.26 feet to a 5/8 inch iron bar set.

Thence S. 85° 33' 32" W. 686.53 feet to a 5/8 inch iron bar set in the north line of Gary Barger, etux's 52.529 acre tract as described in D. B. Vol. 401 Page 966.

Thence N. 0° 56' 41" W. 671.93 feet to a 5/8 inch iron bar set in the south line of John Berry, etux's 3.365 acre tract as described in D. B. Vol. 401 Page 262.

Thence with said Berry's south line N. 88° 57' 05" E. 347.71 feet to a 3/4 inch iron bar found at said Berry's southeast corner.

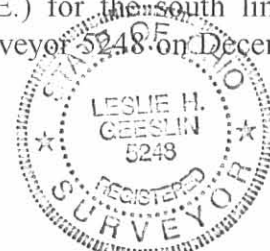
Thence with said Berry's east line N. 1° 24' 45" W. 238.75 feet to a 5/8 inch iron bar set in said south right of way of T. R. 185.

Thence with the south line of said T. R. 185 N. 88° 54' 55" E. 339.49 feet to the place of beginning.

Containing 12.107 acres more or less.

The above described 12.107 acre tract having 5.321 acres in Jananne Properties, an Ohio General Partnership's 20.093 acre tract, and 6.786 acres in their 86.33 acre tract, both described in O. R. Vol. 120 Pages 479-501.

Bearings are based on an assumed bearing (N. 88° 54' 55" E.) for the south line of Township Road 185 in this field survey by Leslie H. Geeslin, Reg. Surveyor 5248 on December 13, 1994.

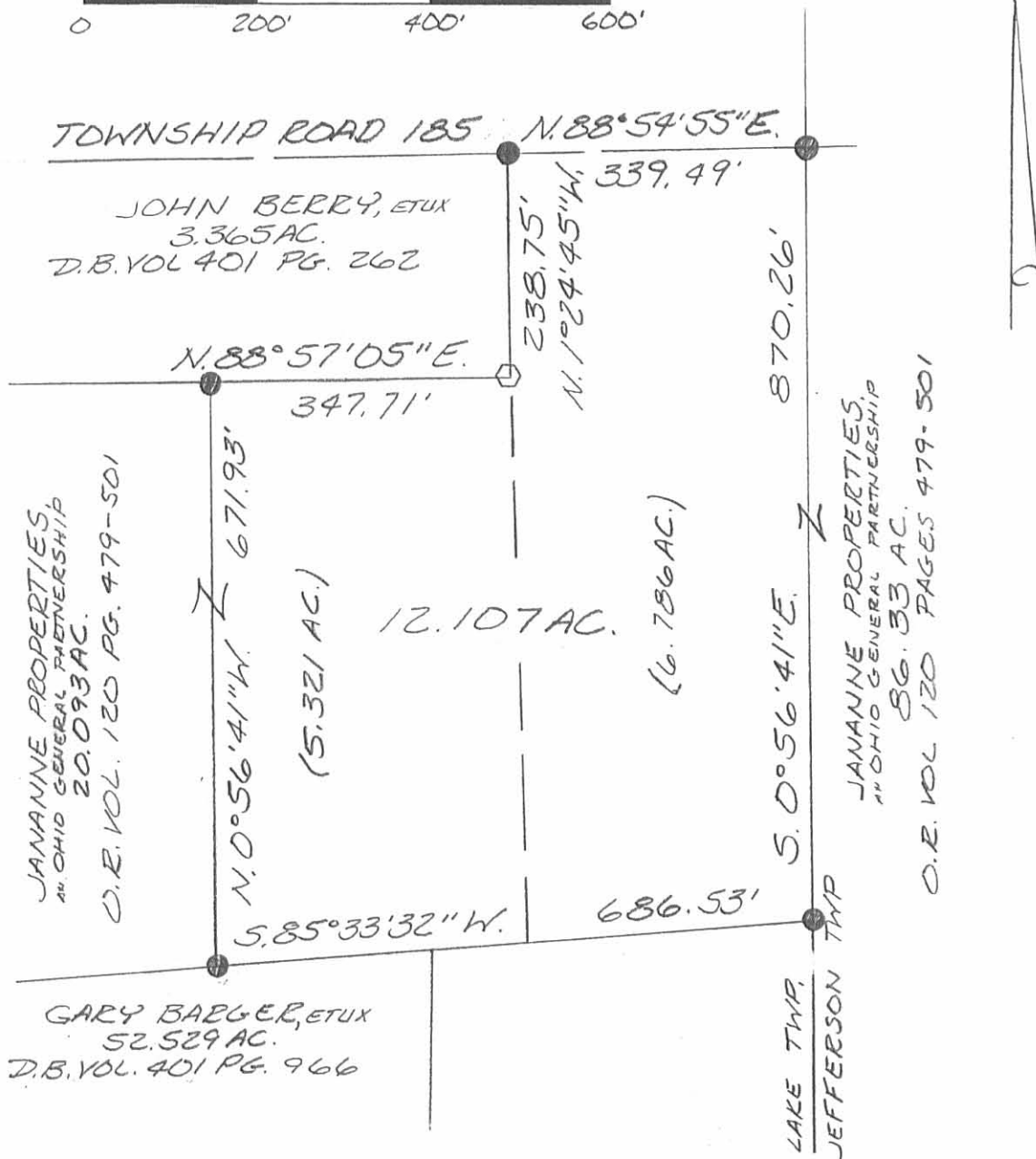


Leslie H. Geeslin

LA A:\06\JANANNE3.SAM JE A:\26\JANANNE3.SAM

INDEXED ON MAP
 6052 2D

SCALE: 1"=200'



- LEGEND:
- = 1/2 INCH IRON PIPE FOUND
 - △ = CAP & NO NAIL FOUND
 - ◇ = 3/4 INCH IRON BAR FOUND
 - = 5/8 INCH IRON BAR SET

SURVEY OF 12.107 ACRES IN VIRGINIA MILITARY SURVEY 4498, LAKE TOWNSHIP, LOGAN COUNTY, OHIO FOR ROGER KINNARD ON DEC. 13, 1994



Leslie H. Geeslin
 LESLIE H. GEESLIN
 RUSHSVLVANIA, O
 (513) 468-2793

INDEXED ON MAP
6052 2P

Lee Surveying and Mapping Co., Inc.

Land Surveys • Topography • Subdivisions • Construction Layout

117 N. Madriver St.
Bellefontaine OH 43311



Phone: (937) 593-7335
Fax: (937) 593-7444

BENEFICIAL OHIO INC. 3.366 ACRE

Lying in Virginia Military Surveys 4498 & 4478, Lake Township, Logan County, Ohio.

Being all of the Beneficial Ohio Inc., 3.365 acre tract as deeded and described in Official Record 924, Page 794 of the Logan County Records of Deeds and being more particularly described as follows:

Commencing on a 5/8 inch iron rod found on the intersection of the center-line of Township Road 185 and the east line of Lake Township.

THENCE, with the center-line of Township Road 185 (variable widths), S 88°-55'-36"W, a distance of 339.62 feet to a 5/8 inch iron rod found at the TRUE POINT OF BEGINNING.

THENCE, with a west line of the Duane S. Raid 5.119 acre tract (O.R. 724, Pg. 123, Tract II), S 01°-28'-31"E, a distance of 255.27 feet to a 3/4 inch iron rod found.

THENCE, with a north line of the said 5.119 acre tract and a north line of the Timothy M. Smith, Sr., 17.205 acre tract (O.R. 435, Pg. 667), S 89°-00'-20"W, a distance of 575.33 feet to a 3/4 inch iron rod found.

THENCE, with the lines of the said 17.205 acre tract, the following two courses:

N 01°-13'-22"W, a distance of 254.87 feet to a 3/4 inch iron rod found.

N 88°-58'-00"E, a distance of 174.95 feet to a 3/4 inch iron rod found on the center-line of Township Road 185, passing a 5/8 inch iron rod set at 144.49 feet.

THENCE, with the center-line of Township Road 185, N 88°-58'-00"E, a distance of 399.25 feet to the point of beginning.

Containing 3.366 acre, of which 0.147 acre is within the highway right-of-way. There are 3.168 acres in Virginia Military Survey 4498 and 0.198 acre in Virginia Military Survey 4478.

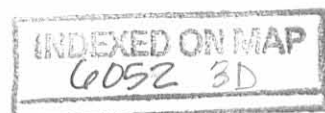
The basis for bearings is the center-line of Township Road 185, being N 88°-58'-00"E, and all other bearings are from angles and distances measured in a field survey by Lee Surveying and Mapping Co., Inc. on September 4, 2008.



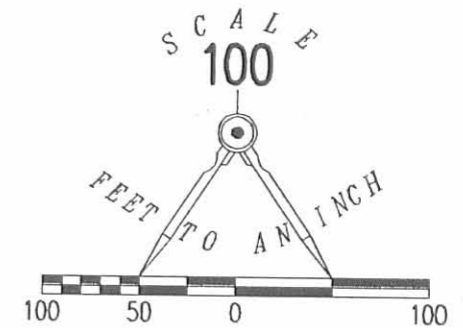
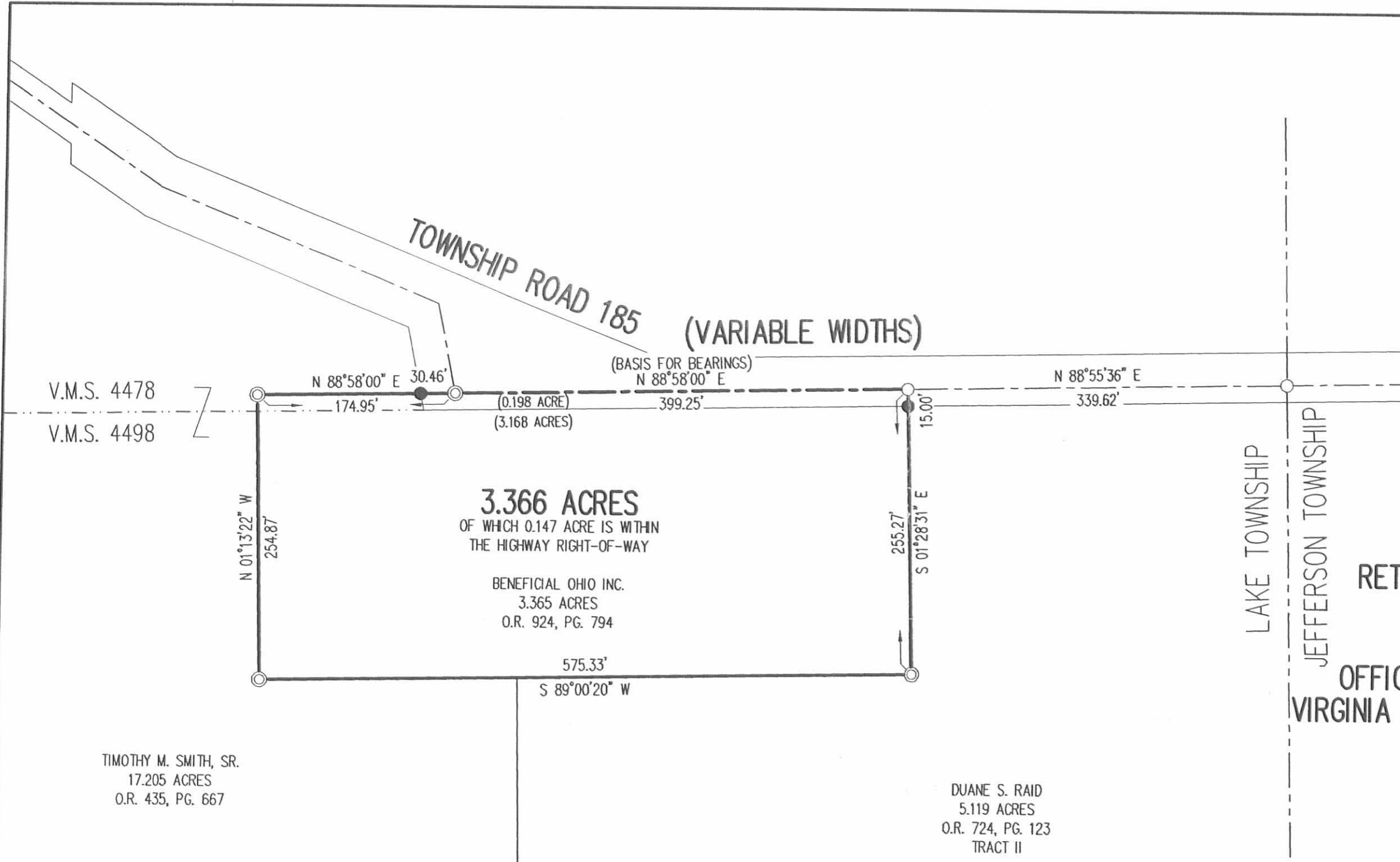
Description prepared by:

William K. Bruce
Professional Surveyor 7437
September 8, 2008

3814088



REC'D 9-9-08 SMY OK



- 5/8 INCH IRON ROD FOUND
- 5/8 INCH IRON ROD SET
- ⊙ 3/4 INCH IRON ROD FOUND

RETRACEMENT SURVEY OF THE
 BENEFICIAL OHIO INC.
 3.365 ACRE TRACT
 OFFICIAL RECORD 924, PAGE 794
 VIRGINIA MILITARY SURVEY 4498 & 4478
 LAKE TOWNSHIP
 LOGAN COUNTY, OHIO

SURVEYED BY:

William K. Bruce
 WILLIAM K. BRUCE
 PROFESSIONAL SURVEYOR 7437
 SEPTEMBER 4, 2008



ORIGINAL STAMP IN GREEN

COPYRIGHT 2008 BY:
 LEE SURVEYING & MAPPING CO., INC.
 117 North Madriver Street
 BELLEFONTAINE, OHIO 43311
 (937) 593-7335
 surveys@lsminc.us
 KSS D0908 3814088 L-3814-3

TIMOTHY M. SMITH, SR.
 17.205 ACRES
 O.R. 435, PG. 667

DUANE S. RAID
 5.119 ACRES
 O.R. 724, PG. 123
 TRACT II

2 WORKING DAYS
BEFORE YOU DIG
 CALL TOLL FREE **800-362-2764**
 OHIO UTILITIES PROTECTION SERVICE.

INDEXED ON MAP
 6052 3P