

Kaylor Survey  
Clyde Kaylor } ch.  
Ed. H. Jones }  
O. C. Harmon Flag

To cut off 50 acres  
from W. End N.  $\frac{1}{2}$  Qr.

6130

## KAYLOR SURVEY

Dug for a stone N.W. 1/4 Section

Found stone about 15' deep, with  
pointed stone on top

WIT: 24" Apple tree stump  
S. 27 E 53 1/2 lbs.

ch. south

40.25 to a stone at E side of  
road to S.W. 1/4 N.W. 1/4 Sec

Set by Henry Moore 1857  
WIT: Found 22" Black Hickory  
S.W. also brick bats  
Apple tree gone.

Set stone in Line at 20.12 1/2 ch

S.W. 1/4 Kaylors N 1/2 N.W. 1/4 Qr.  
and also S.W. 1/4 Ed Jones  
(S.W. 1/4 of 50 Acres sold to Jones  
by Kaylor)

O.K. csc N 5 E

50 X 10 =  
20.12 | 500.00 | 25.34 ch  
40 24  
107 60  
100 60  
7 000  
60 36  
9 640

4/29, 1915

LINE B. East from Stone set  
Ch. East 39.38 ch to Rt. of way  
fence.

No stone at 40.00 ch  
40.00 ch 40.5 ft E. of track.

Ollie Harmon says Elm Tree at  
or near 20.00 is on Line. also  
things fence about 25.00 ch is on  
Line

Offset 11' N. of Stone

S. 84 1/4 E S 84 1/4 E

O.K. csc. to center of 24" Elm  
tree, and center of pig Hickory to a  
stone at 24.67 ch set at S. E - 50 ft.  
Set stone (Temp) at 25.00 ch.

21.82 ch to 28" Pig Hickory (Line tree)

20.49 " " 28" Red Elm Line tree

Set stone at 24.67  
WIT: 12" Red Oak N. 34 W. 43 lbs  
8" W. Oak N. 32 E. 28 lbs

Present  
O. C. Harmon  
Clyde Kaylor  
Ed. H. Jones

(6130)

## LINE C

Ch E. with  $\emptyset$  PIKE  
 Set temp nail at 25.00  
 O.K. DIST 20.41 to iron bar set

## LINE D

Ch. South from nail set to point  
 in S. Line <sup>2nd</sup> in Harman's fence

20.42 to N-Line Harman

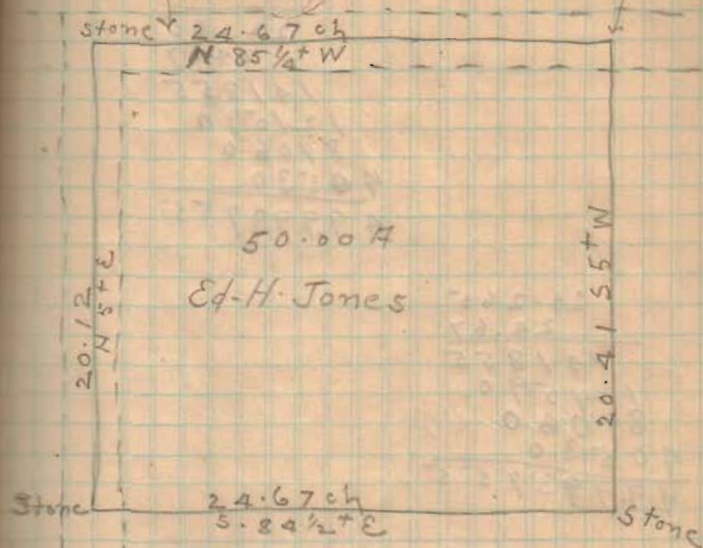
N. 5° E.

O.K. Use N 5° E. O.K. DIST. 20.41

Drove  $\emptyset$  iron bar in  $\emptyset$  Silver  
 Lake pike  
 Set  
 Stakes on Line

## SILVER LAKE PIKE

$\frac{3}{4}$ "  
 $\emptyset$  iron bar  $\sqrt{8}$ "



20.12	20.27	500.00	24.66
20.42		405.4	
20.27		94.60	
		81.08	
		1352.0	
		1216.2	
		1358.0	
		1216.2	

see next page

6130