

# Lee Surveying and Mapping Co.



Farm Surveys • Lot Surveys • Topography • Subdivisions • Construction Layout

855 EAST SANDUSKY AVENUE  
BELLEFONTAINE, OHIO 43311

(513) 593-5780

CLAYTON M. LEE, P.S.  
JEFFREY I. LEE, P.S.

## ADAMS - SEIBENECK SURVEY

Lying in V.M.S. 3322 and V.M.S. 3324, Lake Township, Logan County, Ohio.

Being out of that land in the name of Armstrong and Allen, Incorporated, as deeded and described in the Logan County Records of Deeds (Volume 308, Page 14, Parcel 1) and being more particularly described as follows:

Beginning at a PK nail on the center-line of U.S. Route 68, marking the southwest corner of said Parcel 1 and also being the northwest corner of a 10.99 acre tract (Volume 382, Page 965).

THENCE, with the said center-line of U.S. Route 68, N 13°-32'-30" E, a distance of 433.00 feet to an angle in said center-line (Station 17+50 of O.D.O.T. survey).

THENCE, parallel to the grantor's south line, S 82°-31'-30" E, a distance of 550.00 feet to a point in a lake, passing through a 5/8" iron rod at 50.34 feet and 200.00 feet.

THENCE, parallel to the highway, S 13°-32'-30" W, a distance of 433.00 feet to a 5/8" iron rod set on grantor's south line, passing through a 5/8" iron rod set at 82.30 feet (near south edge of lake).

THENCE, with grantor's south property line, N 82°-31'-30" W, a distance of 550.00 feet to the point of beginning, passing through a 5/8" iron rod set at 499.66 feet.

Containing 5.437 acres, of which 1.044 acres are in V.M.S. 3322 and 4.393 acres are in V.M.S. 3324.

Prepared by;

*Clayton M. Lee*

Clayton M. Lee  
Registered Professional Surveyor No. 6181  
September 11, 1986

This description prepared from an actual field survey.

INDEXED ON MAP

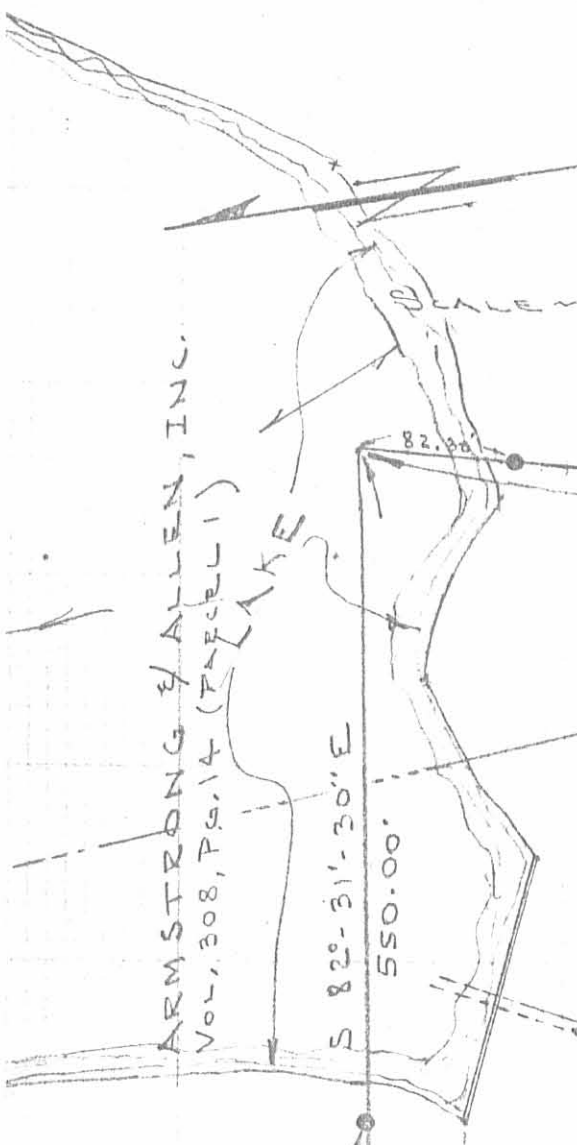
7559 1D



ORIGINAL STAMP IN GREEN

CITY OF BELLEFONTAINE  
 8.31 AC. VOL. 305, PG. 214  
 (AIRPORT)

SCALE = 1" = 100'



ARMSTRONG & ALLEN, INC.  
 Vol. 308, PG. 14 (PARC. 1)  
 LAKE

S 13°-32'-30"W  
 433.00'

(1.044 AC.)  
 (4.393 AC.)

5.437 AC.

S 82°-31'-30"E  
 550.00'

V.M.S. 3322  
 V.M.S. 3324

N. WAGNER  
 Vol. 382, PG. 965  
 10.99 AC.

● = 5/8" IRON ROD SET

N 82°-31'-30"W  
 550.00'

U.S. RTE. 68  
 PKT  
 A: 2° 30' RT.  
 O.D.O.T. STA. 17+50

50' E/W  
 BASIS FOR BEARINGS  
 N 13°-32'-30"E  
 433.00' TAN.

POINT OF BEGINNING

SURVEY OF 5.437 ACRES OUT OF THE  
 ARMSTRONG & ALLEN LANDS (VOL. 308, PG. 14, PARC. 1)  
 V.M.S. 3322 & 3324 LAKE TWP.  
 LOGAN COUNTY, OHIO

INDEXED ON MAP  
 7559 IP

By: *Jeffrey I. Lee*  
 JEFFREY I. LEE  
 REG. SURVEYOR 6359  
 SEPT., 1986



ORIGINAL STAMP IN GREEN