



# Lee Surveying and Mapping Co.



Farm Surveys • Lot Surveys • Topography • Subdivisions • Construction Layout

143 EAST COLUMBUS AVENUE  
BELLEFONTAINE, OHIO 43311

(513) 593-7335

JEFFREY I. LEE, P.S.

## V-TECK COMMUNICATIONS, INC. (0.299 ACRE)

Lying in V.M.S. 3683, Lake Township, Logan County, Ohio.

Being out of the V-Teck Communications, Inc. 1.621 acre tract as deeded and described in O.R. 54, Page 206 of the Logan County Records of Deeds and being more particularly described as follows:

Beginning at a railroad spike set on the center-line of County Road 235, N 84°-21'-00" E, a distance of 25.00 feet from a PK nail found at the intersection of the center-line of County Road 235, a southeast corner of the City of Bellefontaine Corporation Line and the southwest corner of the Charles Chamberlain 5.00 acre tract (Vol. 193, Pg. 467).

THENCE, parallel with the west line of the said 5.00 acre tract, N 6°-02'-39" W, a distance of 169.95 feet to a 3/4 inch iron rod set.

THENCE, N 84°-48'-17" E, a distance of 50.21 feet to a 3/4 inch iron rod set.

THENCE, S 54°-45'-33" E, a distance of 13.76 feet to a 3/4 inch iron rod set.

THENCE, S 5°-31'-21" E, a distance of 22.25 feet to a 3/4 inch iron rod set.

THENCE, S 61°-52'-24" E, a distance of 26.00 feet to a 3/4 inch iron rod set.

THENCE, S 6°-02'-47" E, a distance of 123.84 feet to a railroad spike set on the center-line of County Road 235.

THENCE, S 84°-21'-00" W, a distance of 81.86 feet to the point of beginning.

Containing 0.299 acre of which 0.056 acre is within the highway right-of-way.

The basis for bearings is based upon the center-line of County Road 235 being S 84°-21'-00" W, and all other bearings are from angles and distances measured in a field survey performed by Lee Surveying and Mapping Company on May 31, 1991.

Description prepared by:



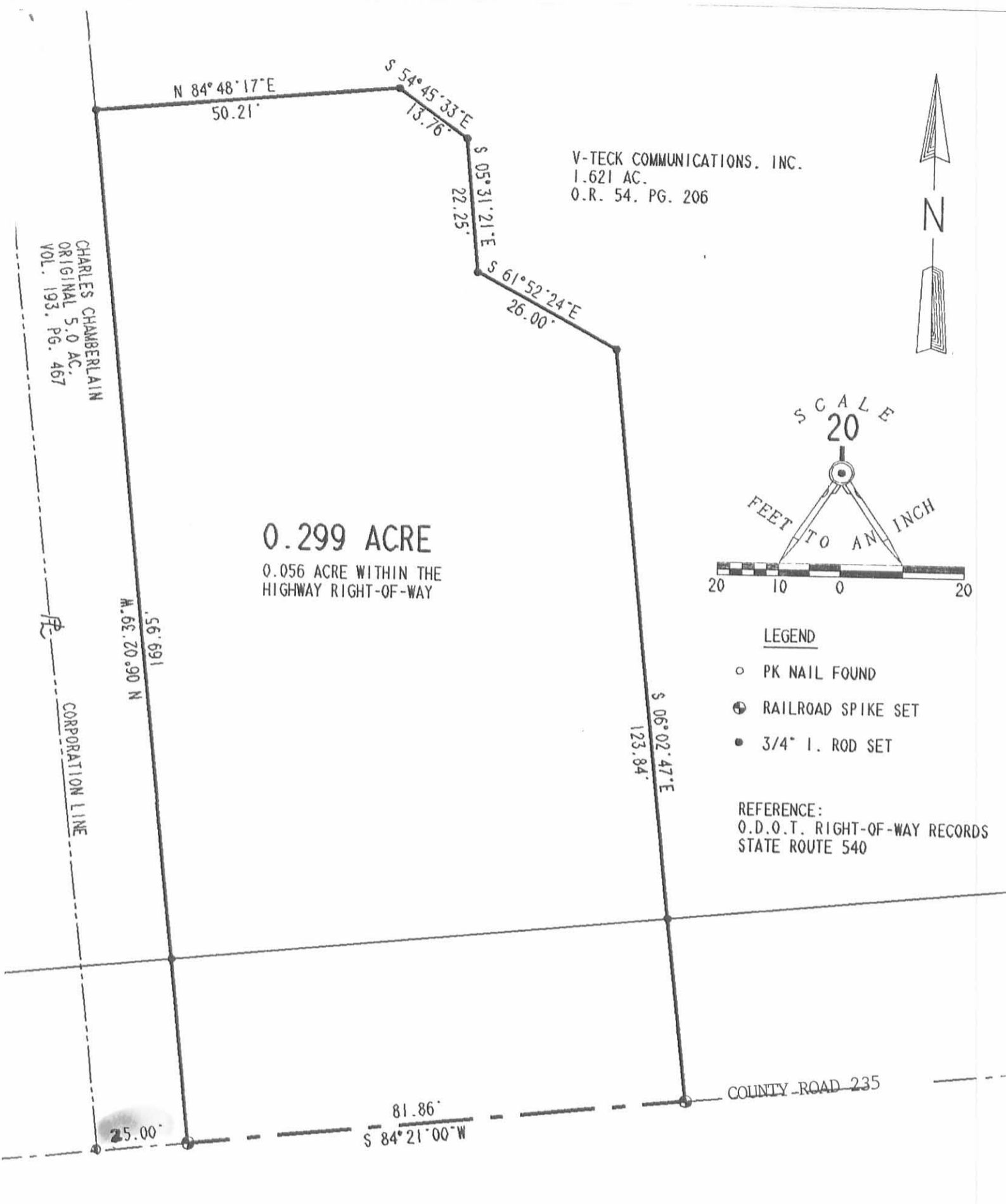
*Jeffrey I. Lee*  
Jeffrey I. Lee  
Professional Surveyor 6359

May 31, 1991  
Revised July 8, 1991

L 310

ORIGINAL STAMP IN GREEN

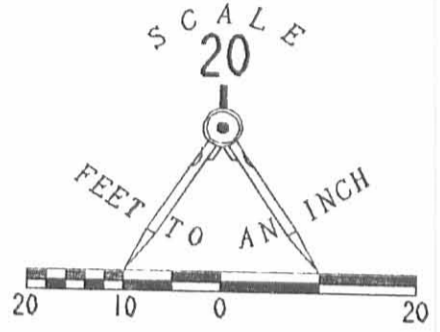
INDEXED ON MAP  
7701 ID



V-TECK COMMUNICATIONS, INC.  
 1.621 AC.  
 O.R. 54. PG. 206

CHARLES CHAMBERLAIN  
 ORIGINAL 5.0 AC.  
 VOL. 193, PG. 467

0.299 ACRE  
 0.056 ACRE WITHIN THE  
 HIGHWAY RIGHT-OF-WAY



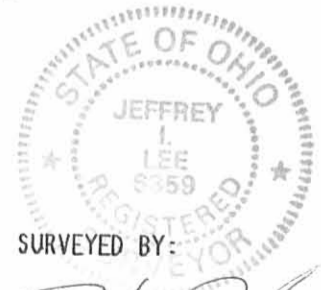
**LEGEND**

- PK NAIL FOUND
- ⊕ RAILROAD SPIKE SET
- 3/4" I. ROD SET

REFERENCE:  
 O.D.O.T. RIGHT-OF-WAY RECORDS  
 STATE ROUTE 540

SURVEY OF 0.299 ACRE OUT OF THE  
 V-TECK COMMUNICATIONS, INC.  
 1.621 ACRE TRACT (O.R. 54, PG. 206)  
 V.M.S. 3683, LAKE TOWNSHIP  
 LOGAN COUNTY, OHIO

Revised June 20, 1991  
 Revised July 8, 1991



SURVEYED BY:  
*Jeffrey T. Lee*  
 JEFFREY T. LEE  
 PROFESSIONAL SURVEYOR 6359  
 MAY 31, 1991

LEE SURVEYING & MAPPING CO.  
 143 East Columbus Avenue  
 BELLEFONTAINE, OHIO 43311  
 (513) 593-7335

INDEXED ON MAP  
 7701 1P

# Lee Surveying and Mapping Co.



Farm Surveys • Lot Surveys • Topography • Subdivisions • Construction Layout

855 EAST SANDUSKY AVENUE  
BELLEFONTAINE, OHIO 43311

(513) 593-5780

CLAYTON M. LEE, P.S.  
JEFFREY I. LEE, P.S.

TRIPLETT BROADCASTING COMPANY

Lying in V.M.S. 3683, Lake Township, Logan County, Ohio.

Being off the west side of that 1.621 acre tract in the name of Triplet Broadcasting Company (Volume 374, Page 962) and being more particularly described as follows:

Beginning at a railroad spike found on the center-line of County Highway 235, marking the southwest corner of said 1.621 acre tract.

THENCE, parallel to and 25 feet easterly from the west line of the Chamberlain original 5.00 acre tract (Volume 193, Page 467), N 6°-05' W, a distance of 313.29 feet to a 5/8" iron rod at the northwest corner of the said 1.621 acre tract.

THENCE, with the north line of the said 1.621 acre tract, N 87°-54'-40" E, a distance of 92.41 feet to a 5/8" iron rod found at an angle in said north line.

THENCE, through said 1.621 acre tract, the following 3 bearings and distances:  
S 0°-23'-10" E, 180.2 feet to a tacked hub.  
S 73°-28' E, 27.3 feet to a tacked hub.  
S 9°-01' E, 118.0 feet to a 'PK' nail on the center-line of County Highway 235.

THENCE, with said center-line, S 84°-21' W, a distance of 105.54 feet to the point of beginning.

Containing 0.647 acre (28,174 square feet).

This description prepared from an actual field survey.  
Basis for bearings: Center-line of County Highway 235 (S 84°-21' W).

Prepared by:

*Clayton M. Lee*

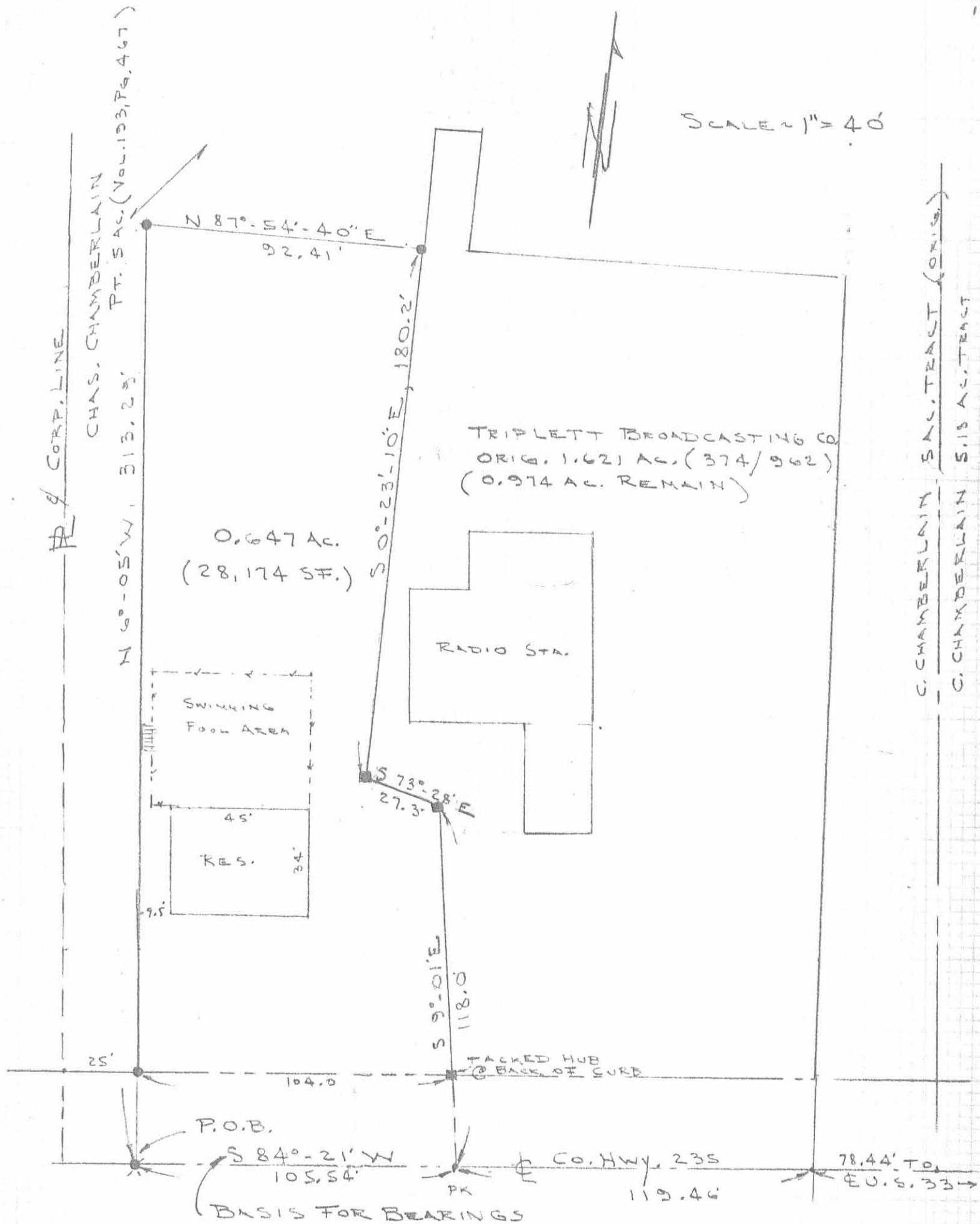
Clayton M. Lee  
Registered Professional Surveyor No. 6181  
November 3, 1987



ORIGINAL STAMP IN GREEN

INDEXED ON MAP  
770 / 20

SCALE = 1" = 40'



0.647 ACRE SURVEY OUT OF THE  
TRIPLETT BROADCASTING CO. 1.621 AC. TRACT (VOL. 374, PG. 962)  
V.M.S. 3683, LAKE TWP., LAMAR COUNTY, OHIO.

- = 5/8" IRON ROD
- = TACKED HUB
- ✕ = RAILROAD SPIKE

CLAYTON M. LEE  
REG. SURVEYOR 6181  
NOV. 3, 1987

ORIGINAL STAMP IN GREEN

INDEXED ON MAP  
7701 2P