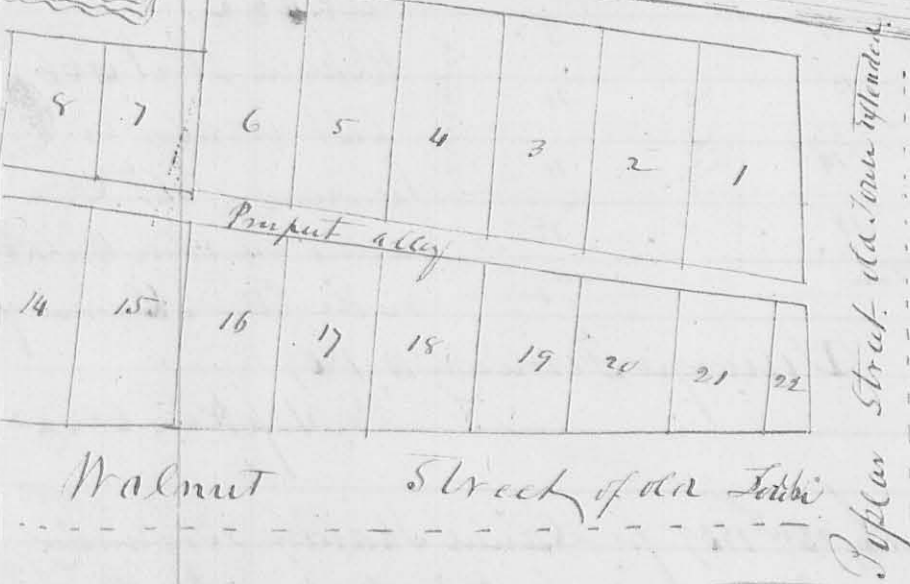
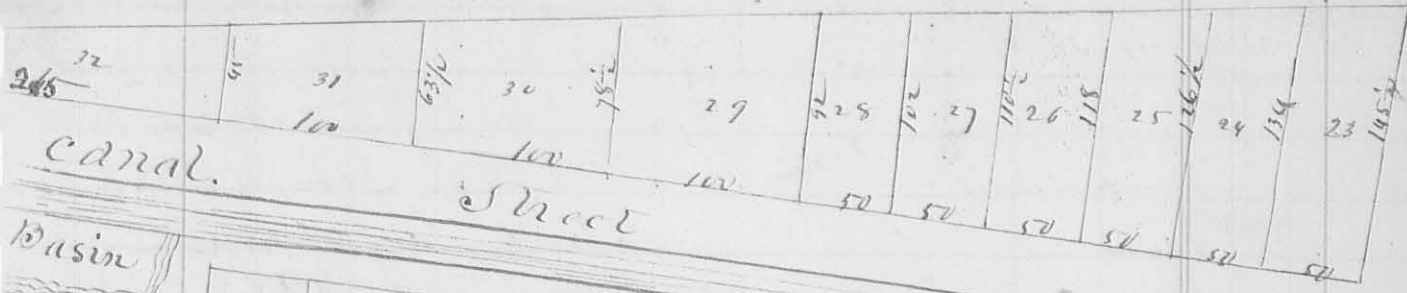


Meigam River



439. Survey for George <sup>Land</sup> Naylor February 11. 1839 part of  
 S34.74. R 14 N. then S 1 W 4.18 chain to stake in a  
 pond then S 89 1/2 E 4.18 ch to a White Oak 18 L & S 87 1/2 E  
 18 Links; then S 1 E 4.18 chain to a White Oak 18 L & W  
 N 33 E 7/8 Links; then N 89 1/2 W 4.18 to the beginning Contain-  
 ing 1 1/4 acres. L. N. Naylor & Co. Surveyors

440. Survey February 12. 1839 for Jacob F. Powell, Beginning  
 S 89 1/2 E 52 poles from the NW Corner of S34.74. R 14 N. then  
 S 2 W 15 chain crossing a branch at 47 poles to a stem; then  
 S 89 1/2 E 3.33 chain to a stem from which a hickory 4 L & W  
 bears N 10 W 20 Links; then N 2 W 15 chain crossing a run  
 to a stem in a Big Road; then N 89 1/2 W 3.33 chain to the  
 beginning. Containing 5 acres, part of the North  
 West quarter of said S34. —

L. N. Naylor & Co. Surveyors

(8447)