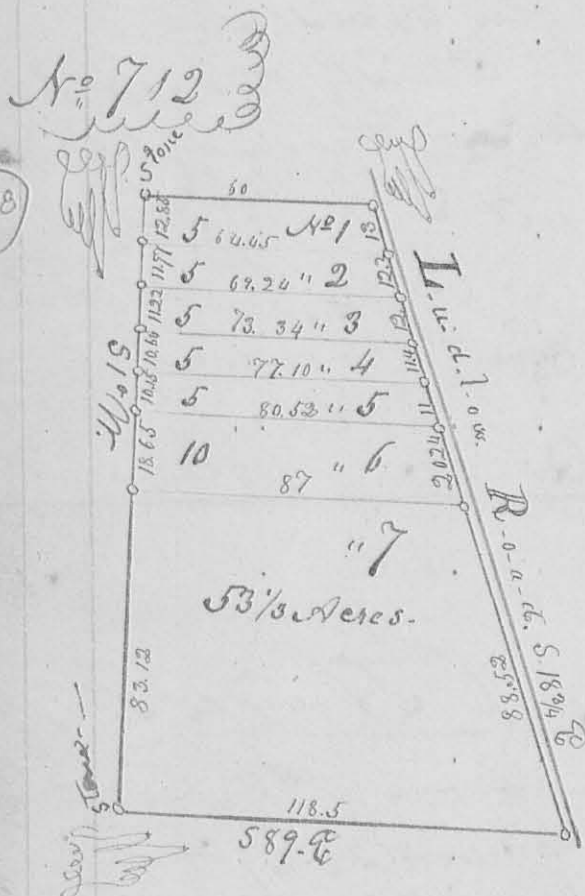


Plat, and the streets and alleys are either parallel to or at right angles with the rail road. A stone is planted at the N.W. corner of lot No. 1.

John Shaw?
 Jas. Reynolds C.C.
 Sarah Gillfillin M.R.

O. Hayes Sur. L.C.O.



This plat represents Dr. B. H. Aylworth's Subdivision of the South part of Section No. 28 T. 4. R. 14 E. C. M. R. Augt 19th 1850.

The lengths of all the lines are expressed in small figures on them. The bearings of the lines are expressed except those that run parallel with the South line and they are understood.

Lots No. 1, 2, 3, 4 and 5 contain each 5 Acres - lot No. 6 contains 10 Acres and No. 7 - 53 3/8 Acres -

John Henry?
 Joel Henry's C.C.

O. Hayes Sur. L.C.O.