

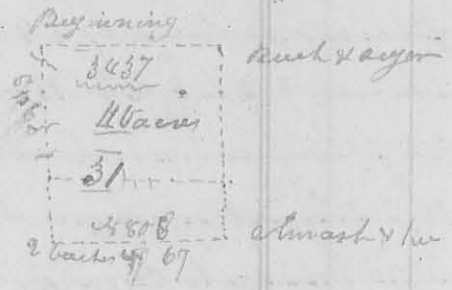
19 4th Mo. (April) 27th 1824

Survey 8031

19

9553

Surveyed 20 acres of land for Stephen Harmon, beginning at 2 small white walnuts and hickory in the west line of William Colborn's survey 803437 thence with said line S10° E 93 poles, crossing a branch at 11 poles one at 52 poles & one at 80 poles to 2 bushes south west corner to said survey thence 88° W 69 poles to a small elm, ash and white oak in the south line of said survey, thence 8° W 93 poles (crossing 2 small branches to a buck and sugar tree in the south line of Isaac Zani's land; thence with said line S80° W 69 poles (crossing 2 small branches) to the beginning containing 20 acres in the south west corner of said survey 803437



Peter Harmon
Josee Beams J. G.

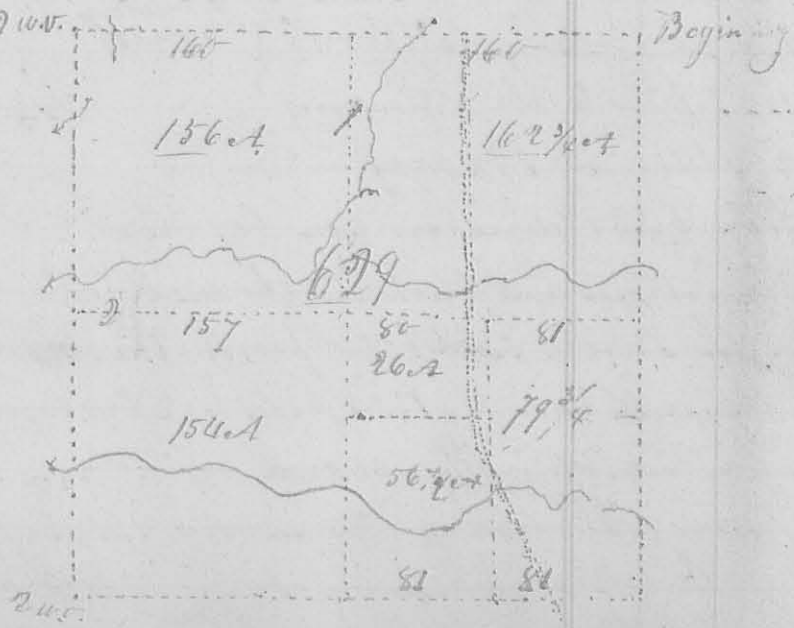
Ja. M. Harmon
Surveyor L. C.

7th Mo. (July) 13th 1824

Survey 8032c

9569

Surveyed and divided section 34 in Town 4 Range 14 Col. for Samuel & Sewell & others beginning at the E. E. corner of said sec. at a stone, the original corner an elm 18 inches in diam. N 61° E 20 links dist., a red oak 28 inches in diam. S 64° W 21 links dist. (this tree is cut down), thence between trees S 34° E 33 1/2 degree westerly variation from the original line, through Bellefontaine, 320 poles to the E. W. corner of said sec. original corner a white oak 20 inches in diam. S 65° E 13 links dist. (this tree is now cut down), another white oak 14 inches in diam. S 63° W 23 links dist. thence south, crossing a branch at 60 poles and one at 254 poles 316 poles to the S. W. corner of this section, a white oak 16 inches in diam. 85° E 53 links dist., a white oak 16 inches in diam. S 61° W 13 links dist. original corner, thence east 31 1/2 poles to the S. E. corner, a red oak 12 inches in diam. 27 1/2 47 links dist., a red oak 15 inches in diam. S. E. 20



20 links dist. both of these are dead, thence north $1\frac{1}{2}$ degree westerly variation from the original line, crossing a branch at 96 poles & one at 196 poles 306 poles to the beginning containing 629 acres

The first division line begins at a stone in the north line of the sec. (the trees are cut down which are called for in the original field notes) 160 poles from either corner; thence S $1\frac{1}{2}$ W (crossing a branch at 155 poles, one at 115 poles 158 poles set a stake for the center corner, a hickory 12 inches in diam. bore \approx 40 & 12 links dist. crossing a branch at 261 poles, 316 poles to a hickory 6 inches in diam \approx 38 $\frac{1}{2}$ 12 links dist. an elm 12 inches in diam S $10\frac{1}{2}$ W 15 links dist. both of these are cut down, the original quadrangle corner, it being 162 poles from the S E corner of the sec.

The second line begins at a stake in a prairie in the west line of the sec. 158 poles from either corner; thence east $1\frac{1}{2}$ degree westerly variation 157 poles to the center corner; continued 80 poles further (crossing a gravel cause way at 66 poles) to a stake in a prairie; thence south crossing a swamp set a stake at 59 poles crossing a branch at 106 poles 158 poles to a stake in the south line of the sec. ~~Then continued the line.~~ See the Plat

John Gunn
John Shull

J. W. Marrison
Surveyor of Logan County

7th mo. (July) 7th 1824.

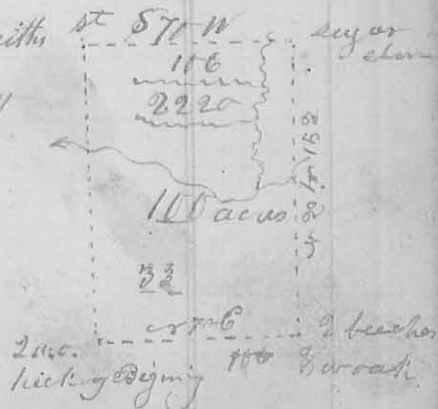
Survey No 33

8180

Surveyed 100 acres of land for Joseph Stokes, who presented a certificate from Noah Zell Colloch, Auditor of Logan County, certifying that there was 100 acres of land sold to the said Joseph Stokes on the 5th day of Jan. 1824 for taxes interest & penalty, being an entire tract by \approx of entry 2220 in the name of Henry Delay

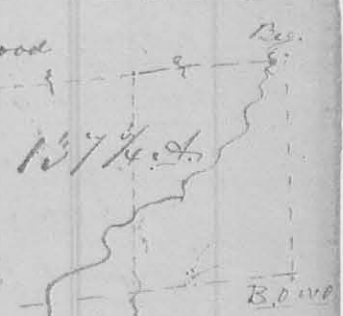
beginning at 2 white oaks and hickory one of the oaks is cut down, the south west corner of said survey, thence \approx 70° E 106 poles to 2 bushes & white oak

(The oak is down, in the line of Augustine J. Smith's Survey \approx 3225 and original corner to said survey here we marked a red oak, thence \approx 20 W. with Smith said line, crossing Mackajack at 82 poles 152 poles to a sugar tree and elm in the line of Holland Hoany; survey \approx 3220 original to Delay's survey thence S 70° W. crossing a branch at 15 poles 106 poles to a stake in a prairie, thence



84 6th mo. June, 25th 1825. (2225) Survey N^o 108 84

Surveyed 137 1/4 acres of land for Daniel Stratton
 Beginning at a buckeye divided into 3 trunks and
 a black ash on the east bank of Beaver run a branch
 of Darty's Creek, easterly corner of Philip Slaughter's
 survey no. 354, thence east with the southerly
 line of Slaughter's survey S 16 1/2° W 196 poles crossing
 beaver run at 2 poles, a branch at 8 1/2 poles (rather at
 99 poles a drain at 170 poles) to a stone 2 dog woods and
 beech stump on the easterly side of a drain - thence
 S 38° E 115 poles, passed a hickory and beech corner to
 Joshua Sharp at 20 poles, crossed Sharp's spring branch
 at 27 poles, a drain at 50 poles, a branch at 90 poles
 and a drain at 105 poles to 2 sugar trees and beech -
 thence N 46 1/2° E 190 poles, crossed beaver run at 74 poles, and found a bur
 oak white oak and black ash corner }
 5 poles northerly, hence the true bearing }
 of this line is N 45° E - thence N 58° W }
 passing an ash elm and buckeye }
 was terly corner to Warner's land }
 110 poles to the beginning contain- }
 ing 137 1/4 acs in the N. E. corner of }
 George McCredie's survey no. 355. }
 Daniel Warner }
 David Warner } c/c



(9589) 7th mo. July 7th 1825 Survey N^o 109

Surveyed 48 acres for James M. Blair and John Powell
 Beginning at a stone in the road west of Bellefontaine in
 the north of Sec. 34 Town. 4 Range 14 N. 14 W which stone
 is the 90th Sec. corner and 160 poles from either of the north-
 -erly corner of the Sec. thence west with laid line and
 road 50.6 poles - set a stake on each side of the road,
 thence South 1° W, crossing a small branch at 37 poles
 set a stake at 66 poles, crossing a branch at 84 poles,
 94 poles to a stake thence S 87 1/2° W 14 poles (crossing

85
 a branch at 10 poles to a stake. - Thence $S 17^{\circ} 24'$ poles (copying a branch at 3 poles) to a stake. - Thence $N 89^{\circ} 17'$ 14 poles to a stake. - Thence $S 17^{\circ} 40'$ poles to a stake in the south line of the north west q. a white oak diam. 120 & 15 links dist. - Thence $S 89^{\circ} 17'$ E. (set a stake at 25 poles) 50.6 poles to the centre corner of the sec. the stake having been removed and the bearing tree a live - one 12 in. diam. $N 40^{\circ} E$ 12 links dist. being cut down. I set another stake (see surveyors. 32, page 19). - Thence $N 10^{\circ} E$ 158 poles to the beginning corner (copying a branch at 48 poles and one at 100 poles) containing 48 acres off the east side of the $N. W. q.$ in said sec. &c.



Jackson McClain } 66
 Samuel Houser }
 Jas. Williamson S.L.C.

7th mo. (July 25, 26, 27, 1828) Survey No 110
 Surveyed and divided the north east and south west quarters of section 33 Town 5 Range 13 M.R.L. under the direction and by the orders of John Shelly, Jeremiah Fruton and John Moor, Commissioners appointed by the court of Comm. Pleas in Logan County Ohio, to make partition of the estate of William F. well decd, equally to each of order of said Court to the Sheriff directed first with the cut line of the $N. E. q.$
 Beginning at the south east corner thereof in the east line of the section, a white oak 4 inches diam. $S 72^{\circ} E$ 13 links dist. a white oak 16 in. diam. $N 29^{\circ} E$ 11 links dist. - Thence north with the original line 86.3 poles to the north east corner thereof a stake in a prairie - Thence west 172 poles with the original line to a stone also comes to the $N. E. q.$ - Thence South (copying a branch at 22 poles) 163 poles to the centre of the section, a white oak 20 in. diam. $S 7^{\circ} E$ 26 links - Thence east (copying