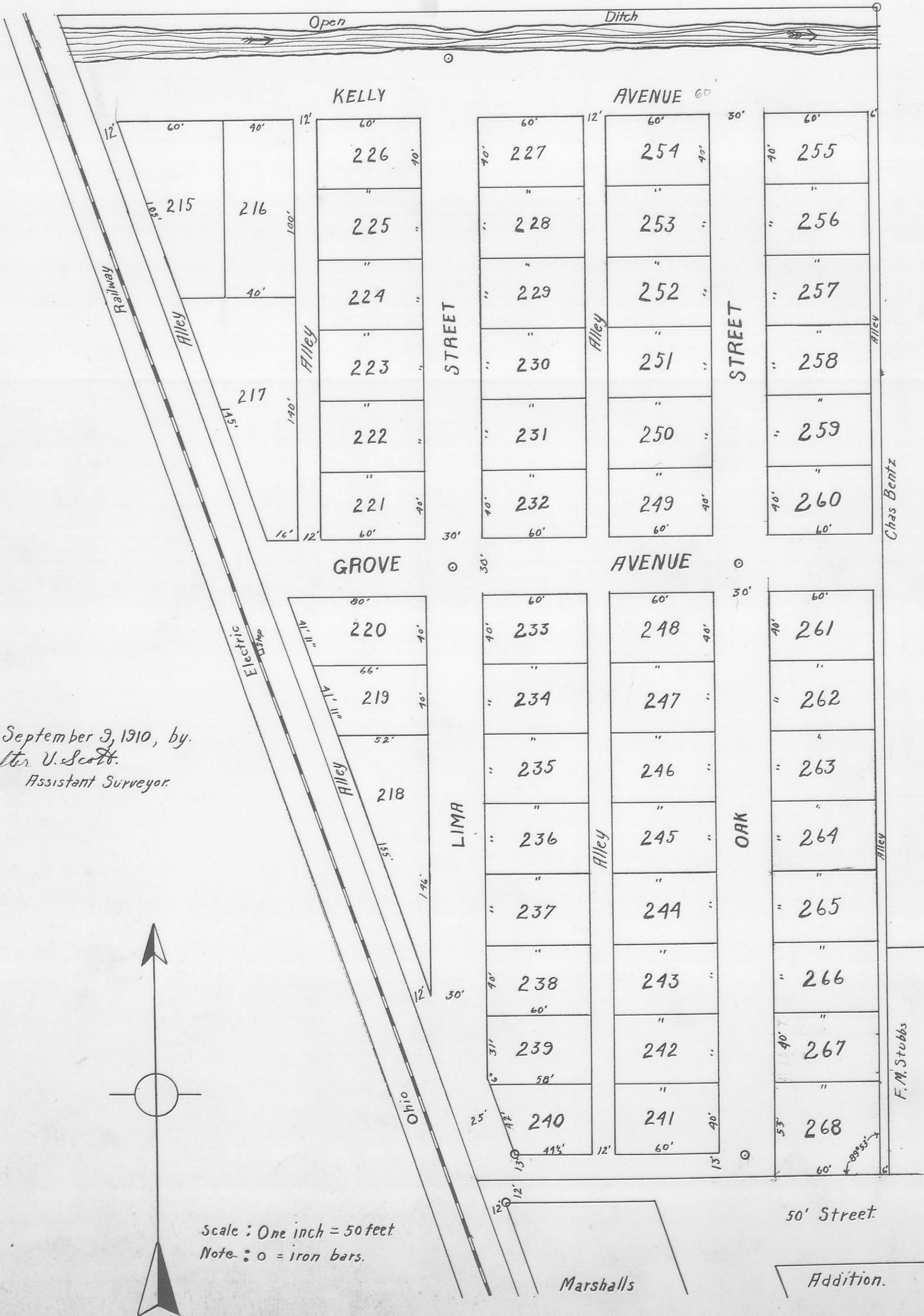


# COTTAGE GROVE ADDITION

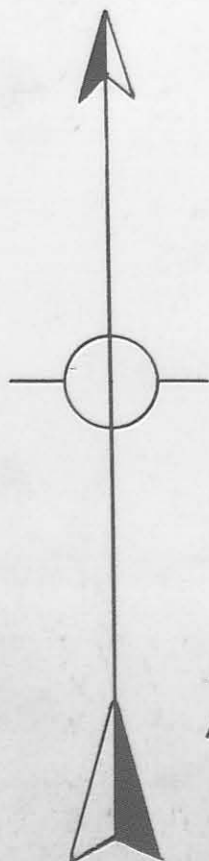
TO  
LAKE VIEW, OHIO.

(174)

INDEXED ON MAP



Surveyed September 9, 1910, by  
Walter U. Scott.  
Assistant Surveyor.



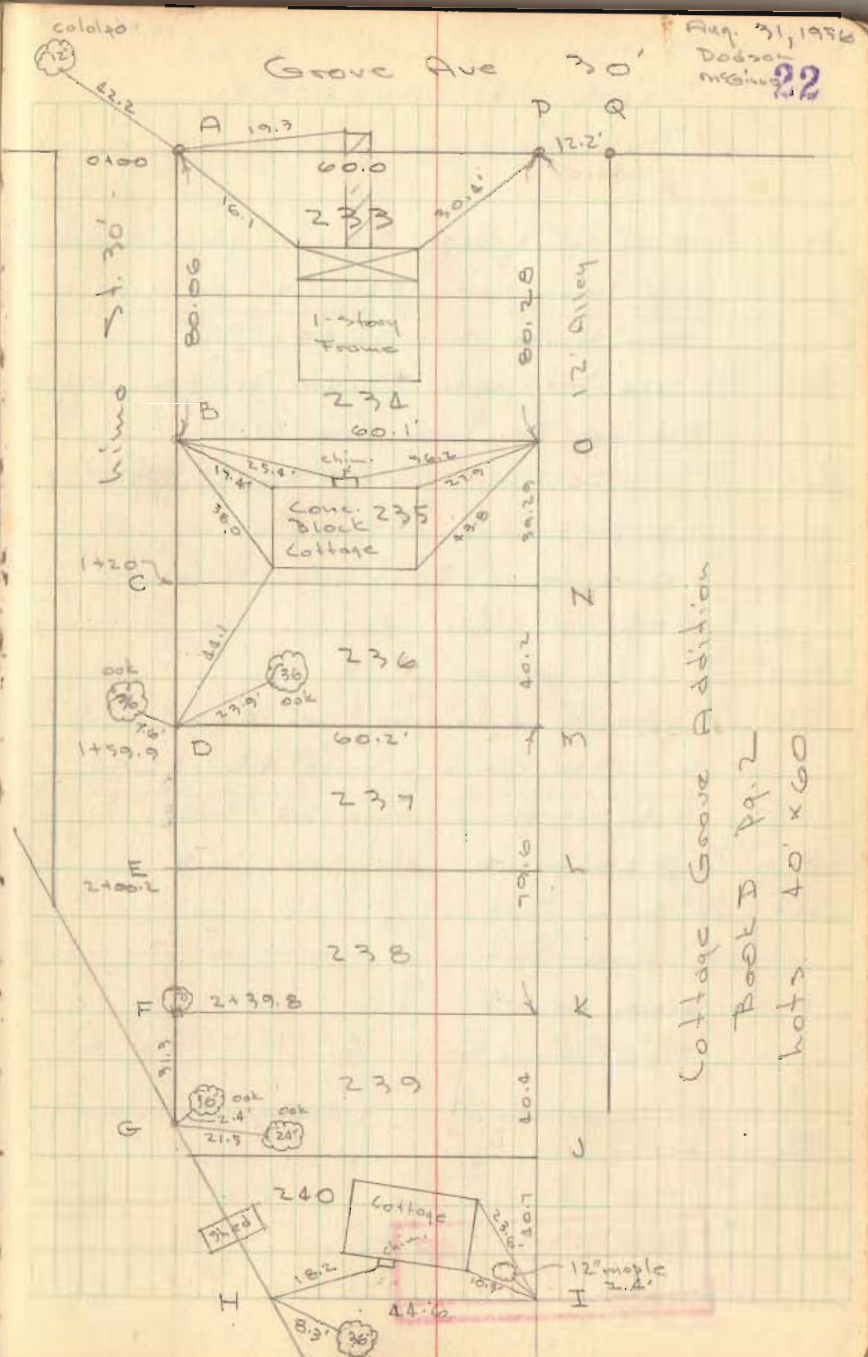
Scale: One inch = 50 feet  
Note: o = iron bars.



lots. 235-236  
Cottage Grove Add.  
Lakeview, O.

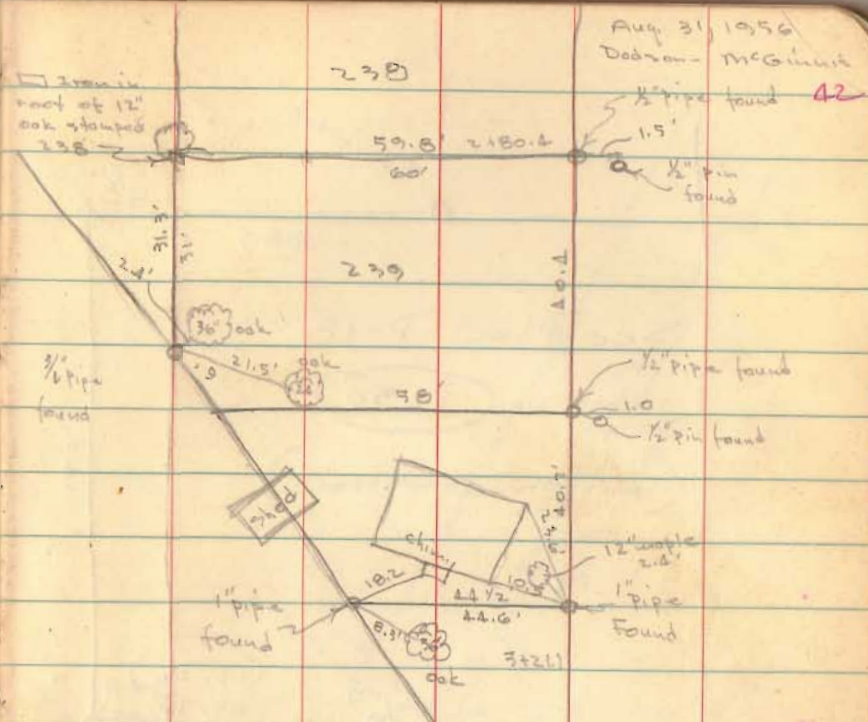
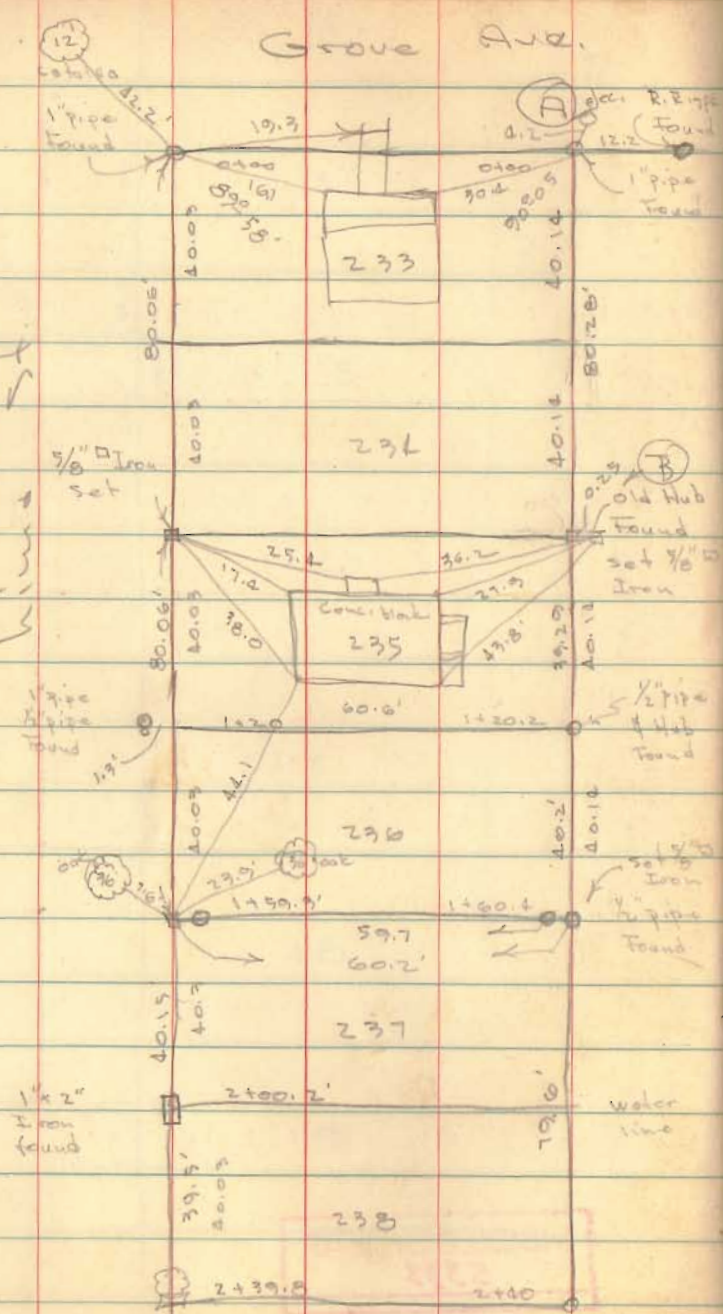
- A = 1" pipe found and used
- B = 3/8" Iron Set
- C = 1" pipe & 1/2" pipe found } 1.3' w. of line  
1' deep
- D = Iron found - set 3/8" Iron - OK
- E = 1"x2" Iron found - OK
- F = 1"x2" Iron found S. side 24" oak "238" OK
- G = 3/4" pipe found
- H = 1" pipe found
- I = 1" pipe found and used
- J = 1/2" pipe found - 40.7' from I also 1/2" pin 1.0' E.
- K = 1/2" pipe found - 40.4' from J - also 1/2" pin 1.5' E.
- L = Dug found nothing but Gas pipe
- M = 1/2" pipe found 79.6' from K & 0.5' W. of line  
set 3/8" Iron - 60.2' from D on line P-I
- N = 1/2" pipe & Hub found 40.2' from M
- O = Set 3/8" Iron - 80.28' from P - found old  
Hub 0.6' deep - 0.3' W. of line and 80.75' from  
"P" - did not use - line P-I = 321.1' - plots  
320.0 = 1.1' long  $\frac{1.1}{8} = 0.1375$  per lot  
set "O" 80.28' from P - this fits existing  
Irons better
- P = 1" pipe Found and used
- Q = 3/2" spike found 12.2' E. of "P"

INDEXED ON MAP  
174



Cottage Grove Addition  
 Pool D 19.2'  
 Lots 40' x 60'

DK 2 Pg. 22



B-found old hub 0.25 w. of line and 80.75 from A  
 Set Co. 334 80.28 from A - fits existing iron  
 better.

$$\begin{array}{r} 0.03335 \\ \sqrt{0.20} \\ \underline{18} \\ 20 \end{array}$$

$$\begin{array}{r} 1.375 \\ \sqrt{1.1} \\ \underline{8} \\ 30 \\ 24 \end{array}$$

Survey lots 235 - 236  
 Cottage Grove Add. hokeview  
 A. K. Eymon

INDEXED ON MAP  
174