

Mulienhour Survey Lakeview  
Lot. # 39

J. Taylor To F.W. Mulienhour Deed Vol. 137 Page 277

- Lots 32 To 39 50' x 132
- Lot. 40 132 on North
- 135.50" South
- 69.25" East
- 39.65" West

Plat  
Book.

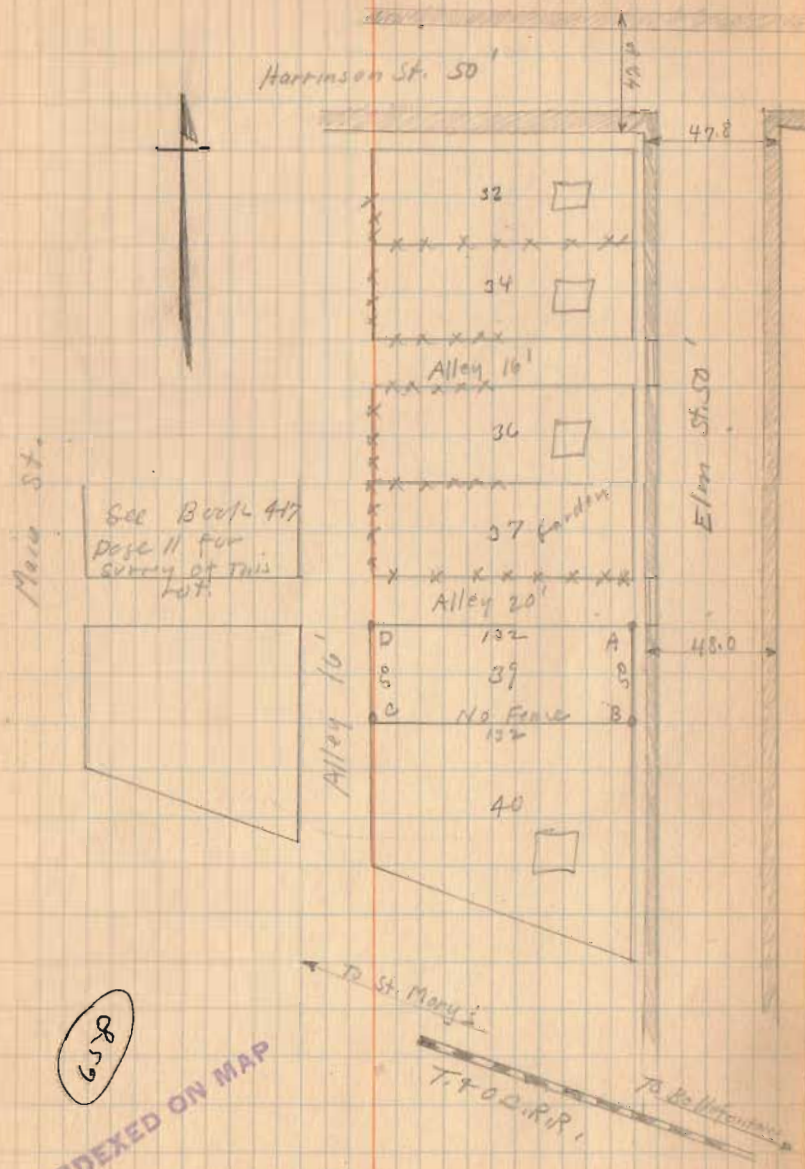
Lot 40 TO R.R. 67.70

- A. 3/4" Iron Placed By Wright About 30" long.
- B " " " " " " " "
- C " " " " " " " "
- D " " " " " " " "

Measured South from Harrison St. Fence found  
O.K. Noted concrete walks at alley ways  
checked O.K. A slight excess from South  
corner of lot 40 To R.R.,

Placed Irons as shown.  
See Book 608 Pages 20-21-22

June -2-1978  
Cool Wright



INDEXED ON MAP

(Continued Page 22)

Molten hour survey Continued

See Page 21

