

Winkler Survey  
 Wakerien Ohio  
 sec. 27-6-8

Survey TO show location of  
 "Wink" and "Comphy" cottages in  
 respect to 12' Alley, S. side of  
 Wink Cottage 0.2' N. of N. alley line  
 N. side of Comphy cottage on  
 south side of alley line  
 (Hangover of roof eaves not  
 counted)

Noted other irons found.

See Book 390 Page 40 for Survey 6-8-25

1559

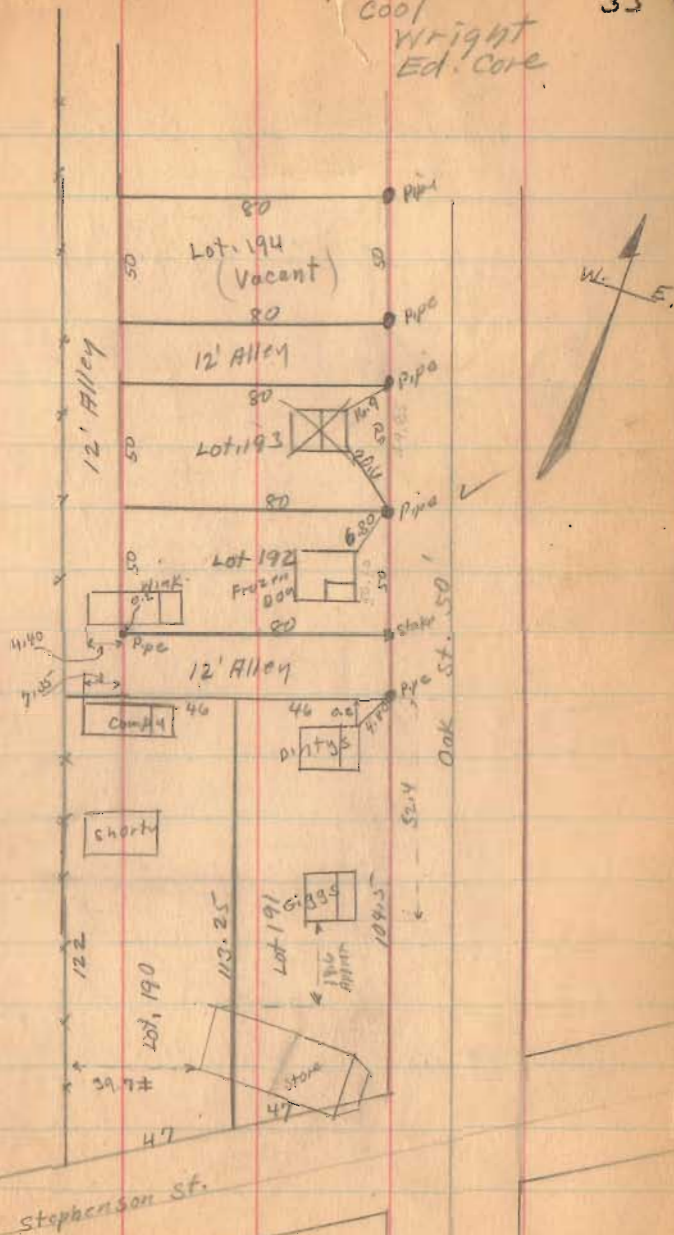
INDEXED ON MAP

April-12-1934  
 Cool  
 Wright  
 Ed. Core

55

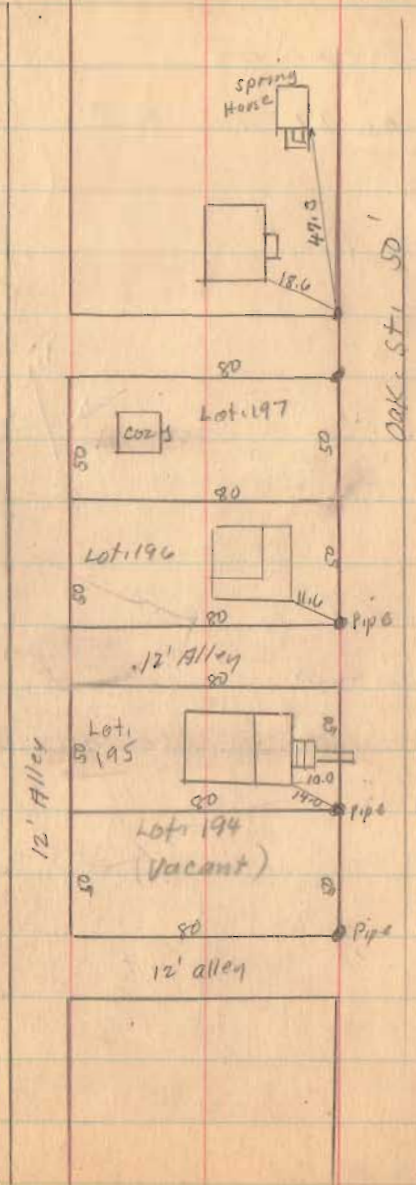
TO HOME

ELEC. R.F.



Winkler Survey (continued)

TO  
Linn.



1559

INDEXED ON MAP



F.B. 570

Winkler Survey  
Lakerview Ohio  
sec. 27-6-8

Survey TO show location of  
"Wink" and "Comphy" cottages in  
respect to 12' Alley, S. side of  
Wink cottage 0.2' N. of N. alley line  
N. side of Comphy cottage on  
south side of alley line  
(Hangover of roof eaves not  
counted)

Noted other irons found.  
See Book 390 Page 40 for Survey 6-8-15

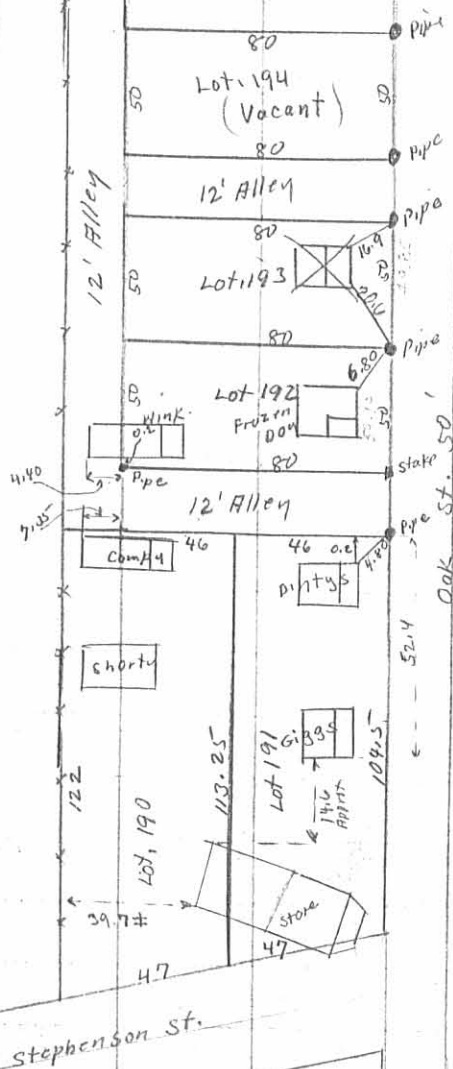
1559 P-1  
INDEXED ON MAP

April-12-1939  
Cool  
Wright  
Ed. Core

55

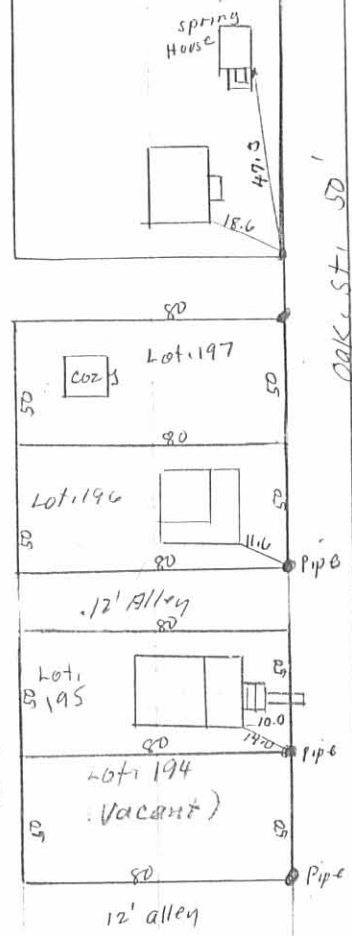
TO ALLEY

ELEC R.F.I.



Winkler Survey (continued)

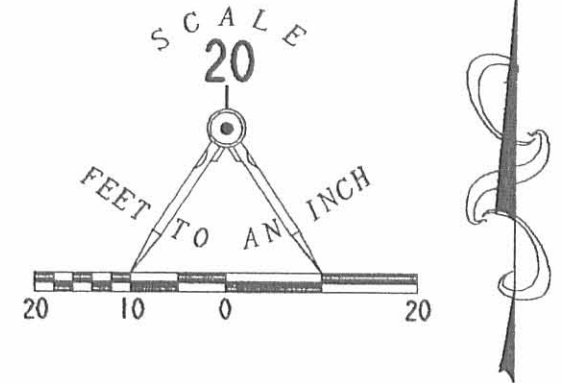
TO  
Lumber.



1559 IP-2  
INDEXED ON MAP

117 REC'D 8-24-00 BMB

CURVE	DELTA ANGLE	RADIUS	ARC	TANGENT	CHORD	CHORD BEARING
C 1	0° 13' 16"	4531.58'	17.48'	8.74'	17.48'	S 20° 05' 22" E



- LEGEND
- 5/8 INCH IRON ROD SET
  - 1/2 INCH IRON PIPE FOUND



RETRACEMENT SURVEY OF THE  
INDIAN LAKE EMERGENCY  
MEDICAL SERVICE, INC.  
PART OF LOTS 190 AND 191  
VOLUME 386, PAGE 849  
MARSHALLS ADDITION TO LAKEVIEW  
PLAT CABINET A, SLIDE 127  
VILLAGE OF LAKEVIEW  
STOKES TOWNSHIP  
LOGAN COUNTY, OHIO



SURVEYED BY:  
*William K. Bruce*  
WILLIAM K. BRUCE  
PROFESSIONAL SURVEYOR 7437  
JULY 14, 2000

COPYRIGHT 2000 BY:  
LEE SURVEYING & MAPPING CO., INC.  
117 North Madriver Street  
BELLEFONTAINE, OHIO 43311  
(937) 593-7335

INDEXED ON MAP  
1559 2P

2 WORKING DAYS  
BEFORE YOU DIG  
CALL TOLL FREE 800-362-2764  
OHIO UTILITIES PROTECTION SERVICE.