

FB 700

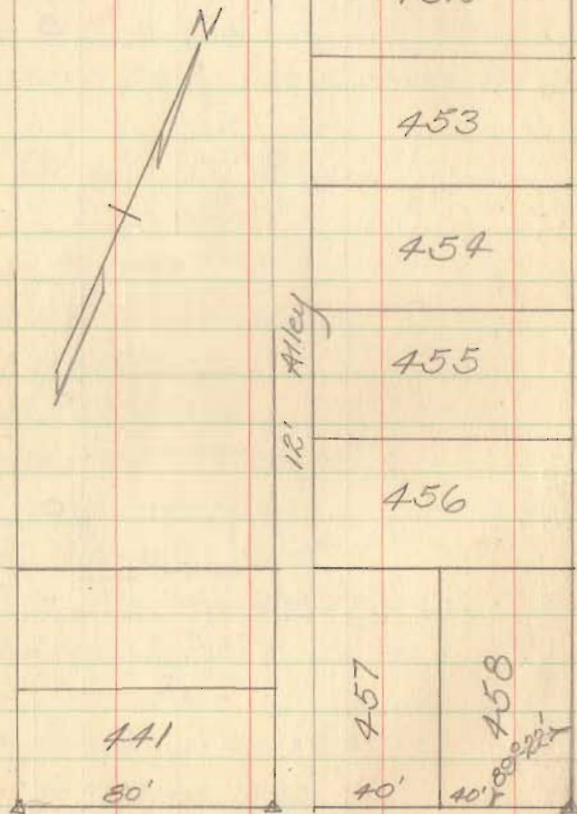
Sep. 12, 1956

Party: C. Keysor
V. Detrick
B. Craig
R. Smith

See File D-28 and
L-33

Lakeview, Ohio
Park Ave.

North Main St.



Stephenson St.

△ - Irons found (See next pg. for witnesses)
□ - RB spikes set

Byens St. 30'

472

473

474

475

501

20'

502

503

504

505

506

507

508

459

460

461

463

52

200.1'

3+12.75
1°-33' Left

Park Ave 30'

State of Ohio
S.R. #93

INDEXED ON MAP

4369

INDEXED ON MAP

0+80.2
8°-39' Rt.

15'

15'

15'

15'

15'

15'

15'

15'

15'

15'

Post

15'

15'

15'

15'

15'

63'

20'

61.2'

15'

15'

15'

15'

15'

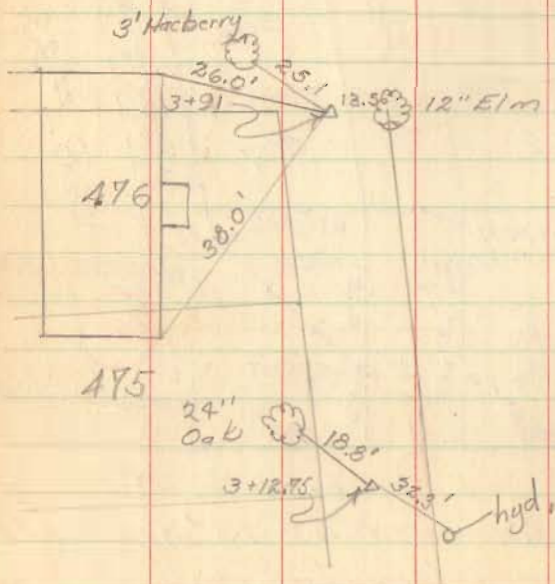
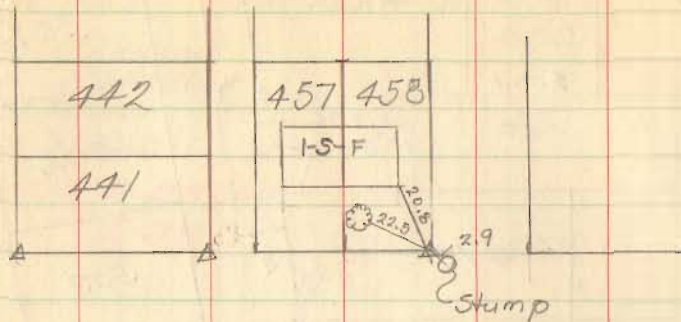
15'

0+100

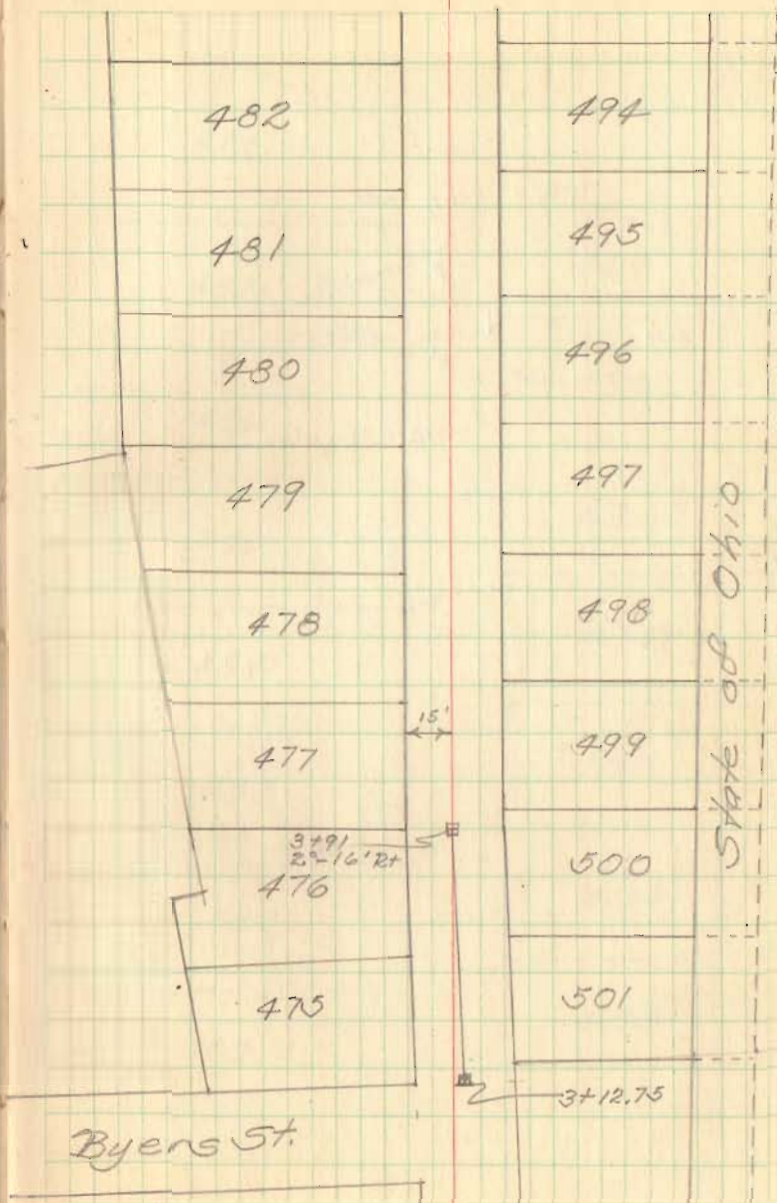
Note: - The line set is 15' from left (west) property line, but may or may not be the $\frac{1}{2}$ of Park Ave. It fits on north end, extra land on right at south end

FB 700

Part Aie (Contd)



27

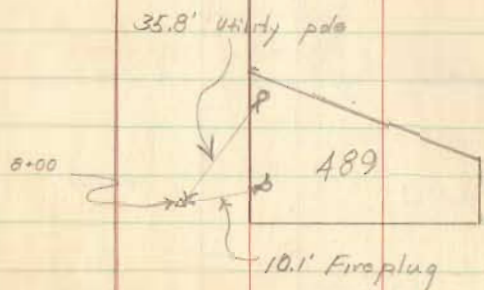


State of Ohio

S.R. #33

FB 700

Park Ave.



28

