

Survey for State Line
Lakeview, east to Midway

9+50 = 5+00 on H.S.

Note: States leases
in red.

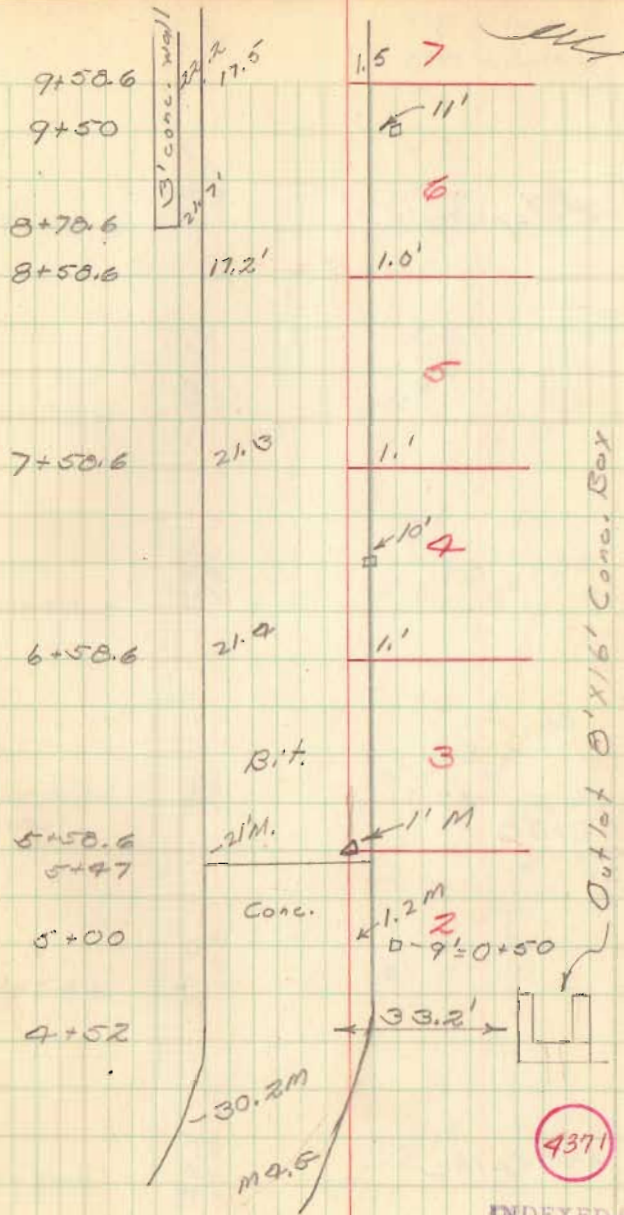
According to 1911 survey
all stations should be
+58.6 instead of +58.

7+00 = 2+50 on H.S. Ditch

5+58 RR. spite

5+00 = 0+50 on Houchins Slough

32



15+58 RRspike

12+92 = 8+00

10+58 RRspike

15+58.6

14+58.6

13+58.6

12+58.6
12+92

11+58.6

10+58.6

22.0
19.1'

22.7
18

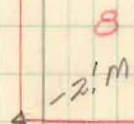
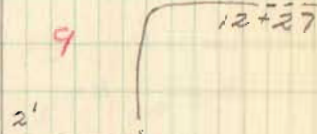
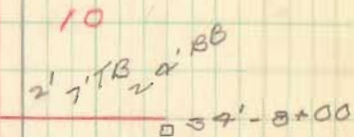
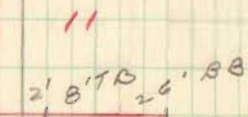
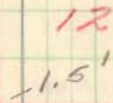
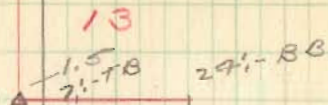
21.6
18'

23.1
19'

23.0
17.0

22.2
17.9 M

TB - top bank
BB - bottom bank 33



7

20+58 RR Spike

21+58.6

22.7
19.1

19

2'

20+58.6

22.9
19.1

18

1.4

E 20+38

19+58.6

13' Cond. Wall
22.6
18.7

17

1' 7" TB

25' BB

18+58.6

22.2
18.6

16

1'

17+58.6

22.2
18.4

15

1' 6" TB

26' BB

16+58.6

22.5
18.1

14

1' 7" TB

26' BB

13

25+58 RR Spike

22+58.6	23.0 19'	1.9'	19
23+58.6	23.0 19.2'	1.9'	20
24+58.6	22.7 18'	2' 7-TB	21 25'-80
25+58.6	23.2 18.3'	1.3'	22
26+58.6	22.2 18.6	1.6' 7-TB	23 20'-80
27+58.6	23.9 19'	1' 7-TB	24 20'-70
			25 20'-70
			26 Ditch
			27 93TB

x
x
26+32
x
Feet

33+58 RR Spike

30+58.6 RR Spike

33+58.6

32+58.6

31+58.6

30+58.6

29+58.6

28+58.6

22.2
19'

21.9
18.6'

23.2'
19'

23.5'
19'

22.5'
19'

22.6'
19.4'

31' Conc. Wall

4
1'
6'-TB 31
- 23'-BB
- 30'-TB
- 36' &
- 45'-TB

1'
8'-TB 30
- 24'-BB
- 30'-TB
- 37.8 Ditch
- 45'-TB

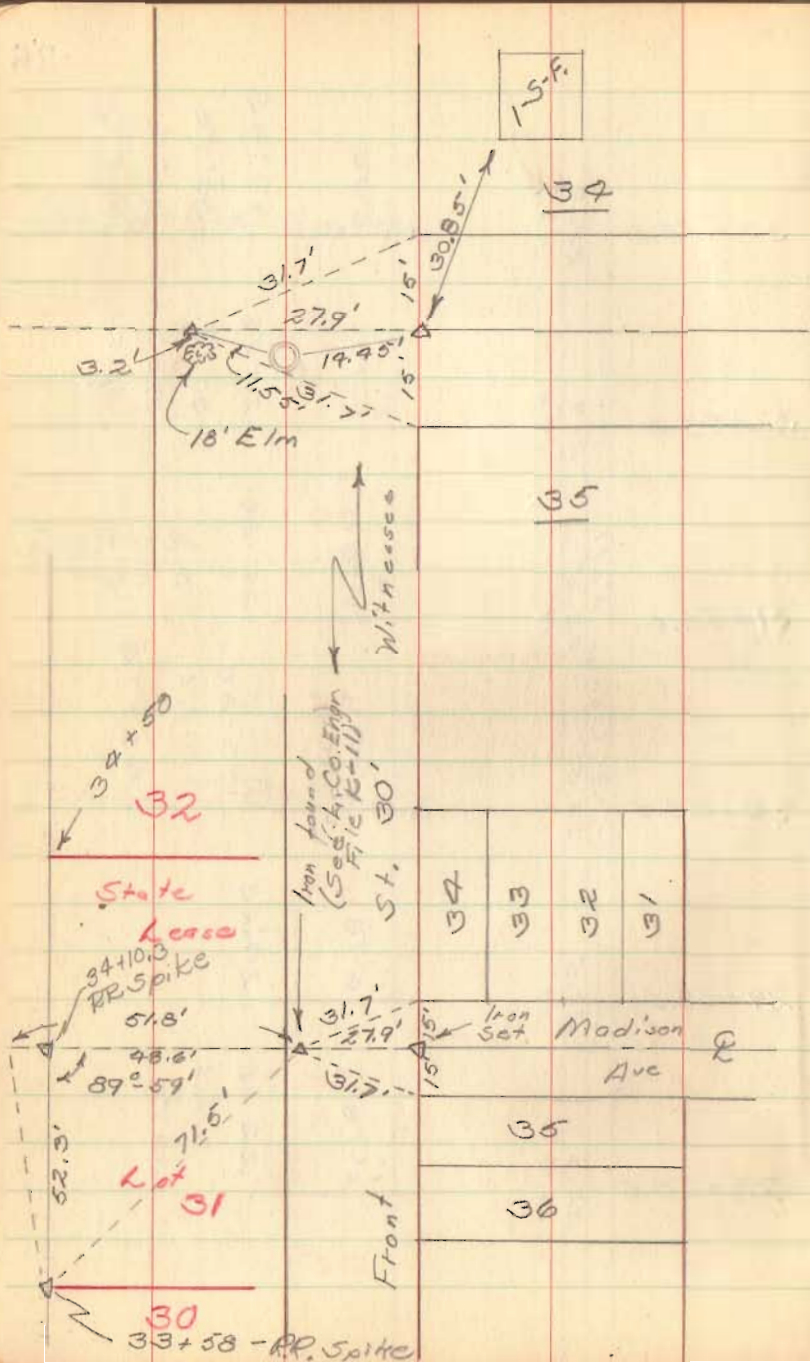
1.4'
9'-TB 29
- 26'-BB
A) = poles +
& logs (6) + 0.1

1'
7'-TB 28
- 33'-BB
Ditch
- 47'-TB

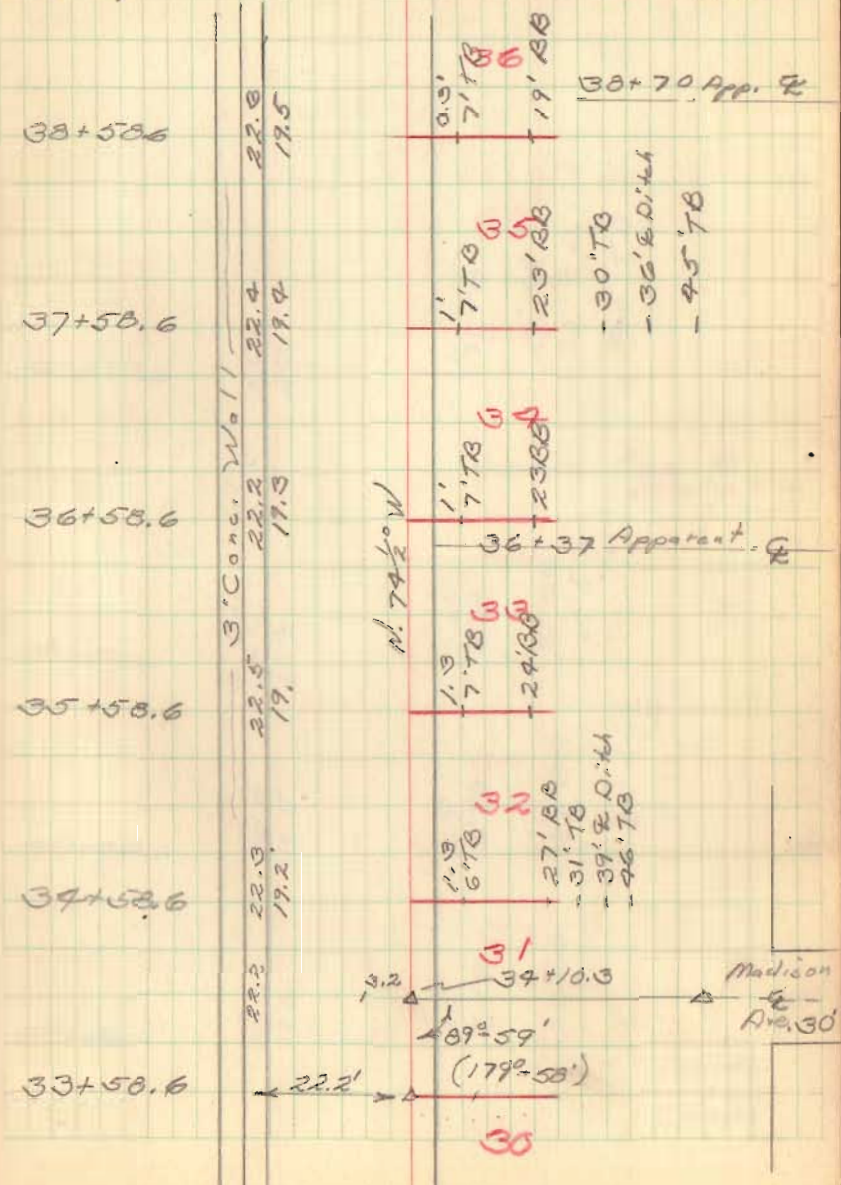
1'
6'-TB 27
- 29'-BB

1'
6'-TB 26
- 22'-BB
Ditch
- 33'-TB

25



Note: Original survey shows $0^{\circ}09'$ angle, right at Sta. 35+58.6, not used in this survey. All lot corners are at Sta. 33+58.6



42+58.6

23.7
30.

1.1' TB
 - 7.2' TB
 - 26' BB
 - 35' E Ditch
 - 42' TB

41+58.6

9' Conc. Wall

23.4
19.9

0.6' TB
 6' TB
 - 21' BB
 - 27' Edge Pond

72+14 App. E
 Midway Ave.

40+58.6

26.4
19.5

0.7' TB
 6' TB
 - 27' BB
 - 39' Edge Pond

39+58.6

23.0
19.8

0.6' TB
 6' TB
 - 23' BB

66

39+40
 X
 Combs