

T. & O.C. R/W
FOR

STOKES TOWNSHIP TRUSTEES
LAKEVIEW, OHIO

- A = 1" ϕ BAR FOUND 11" Deep
- B = 3/4" ϕ BAR SET 3" Deep
- C = 5/8" ϕ BAR SET
- D = " " "
- E = 3/4" ϕ BAR SET
- F = BOLT FOUND ?
- G = 1 1/2" PIPE FOUND 12" Deep ?
- H = 1" Sq CONC POST

FOR T. & O.C. See Plan R-18

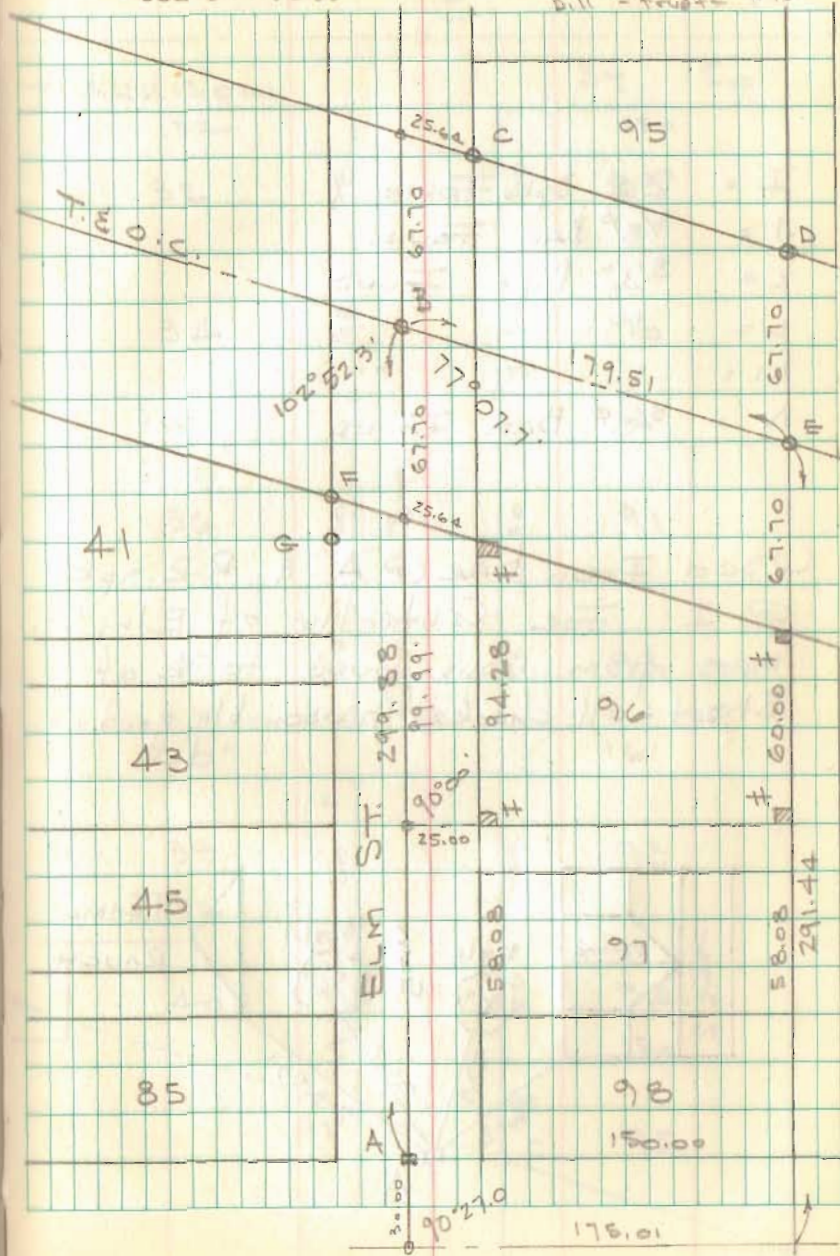
FOUND RAIL ON END @ Stn. 1699+53.92
MEAS WEST TO Stn. 1719+53.59 Dug large
hole found nothing, Meas west to
Stn. 1739+53.25 Found Rail on end
w/t - Used these irons for
Centerline

6693

INDEXED ON MAP

10/23/80
Dodson-Nichols

10/20/80
Dodson-Nichols
Bill - Ruppel 72



T. & O.C. CONT'D.

- I = R.R. Spk FOUND
- J = $\frac{5}{8}$ " BAR FOUND
- K = $\frac{3}{4}$ " PIPE FOUND
- L = " " "
- M = " " "
- N = $\frac{5}{8}$ " BAR FOUND

Used Iron bar @ "A" & R.R. Spk @ I for Centerline of Elm St. Meas from Irons found to E of Street - all checked reasonably good.

