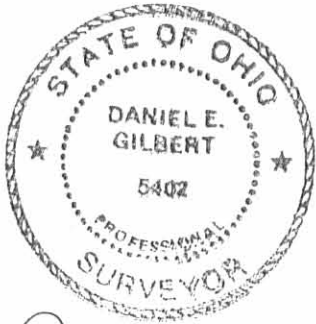
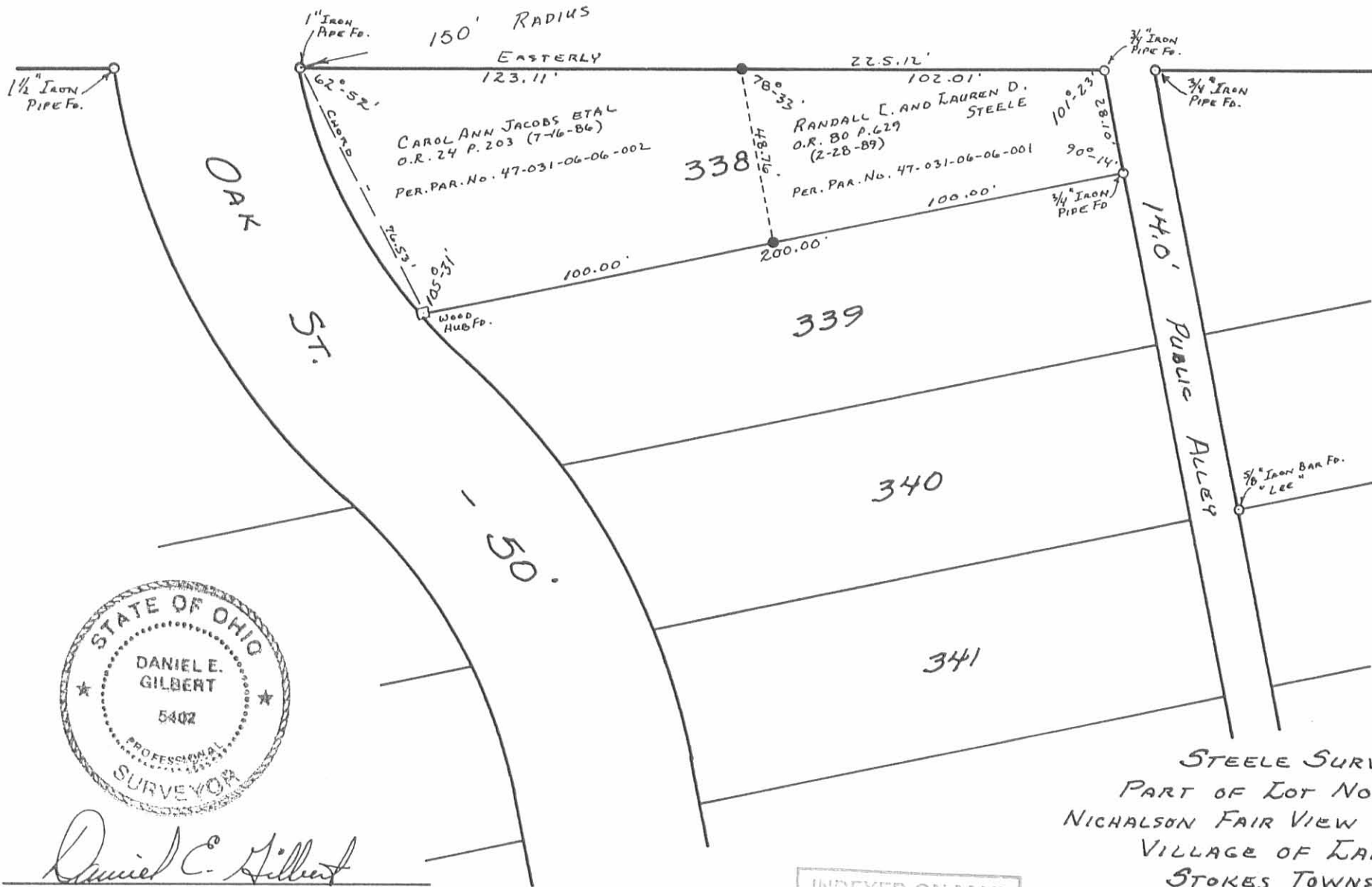


BROWN ST. - 60'



*Daniel E. Gilbert*  
 DANIEL E. GILBERT, P.S.  
 REG. SUR. NO. 5402  
 400 N. PARK ST.  
 BELLEFONTAINE, OHIO 43311

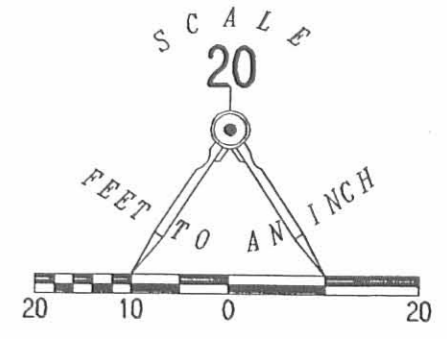
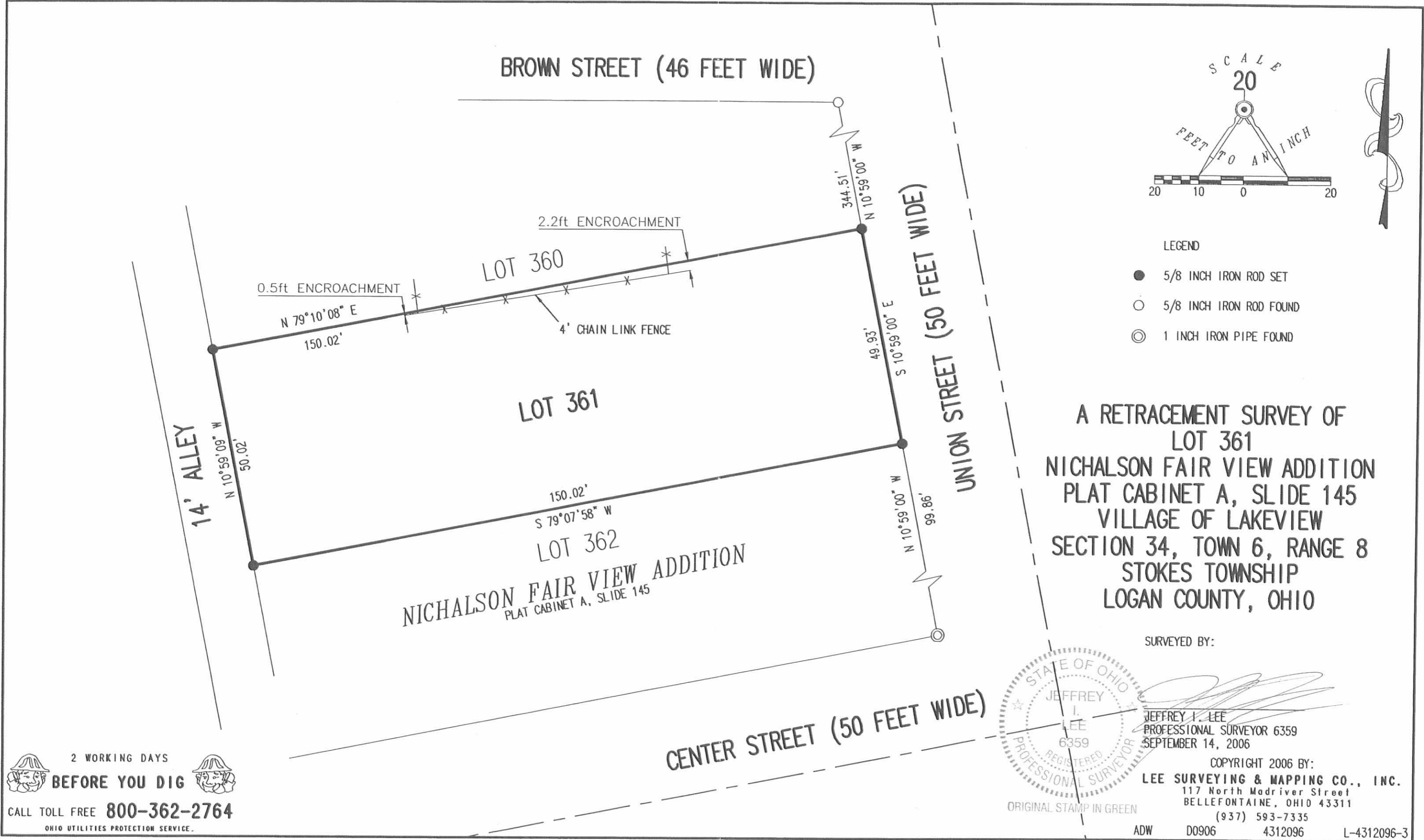
INDEXED ON MAP  
 7902 1P

STEELE SURVEY  
 PART OF LOT NO. 338  
 NICHALSON FAIR VIEW ADDITION  
 VILLAGE OF LAKEVIEW  
 STOKES TOWNSHIP  
 LOGAN COUNTY, OHIO  
 APRIL 13, 1989

SCALE: 1" = 40'

089-016

REC'D 9-19-06 S.M.Y. OR



A RETRACEMENT SURVEY OF  
 LOT 361  
 NICHALSON FAIR VIEW ADDITION  
 PLAT CABINET A, SLIDE 145  
 VILLAGE OF LAKEVIEW  
 SECTION 34, TOWN 6, RANGE 8  
 STOKES TOWNSHIP  
 LOGAN COUNTY, OHIO

SURVEYED BY:



*[Signature]*  
 JEFFREY I. LEE  
 PROFESSIONAL SURVEYOR 6359  
 SEPTEMBER 14, 2006

COPYRIGHT 2006 BY:  
**LEE SURVEYING & MAPPING CO., INC.**  
 117 North Madriver Street  
 BELLEFONTAINE, OHIO 43311  
 (937) 593-7335

ORIGINAL STAMP IN GREEN

ADW D0906 4312096 L-4312096-3

2 WORKING DAYS  
**BEFORE YOU DIG**  
 CALL TOLL FREE **800-362-2764**  
 OHIO UTILITIES PROTECTION SERVICE.

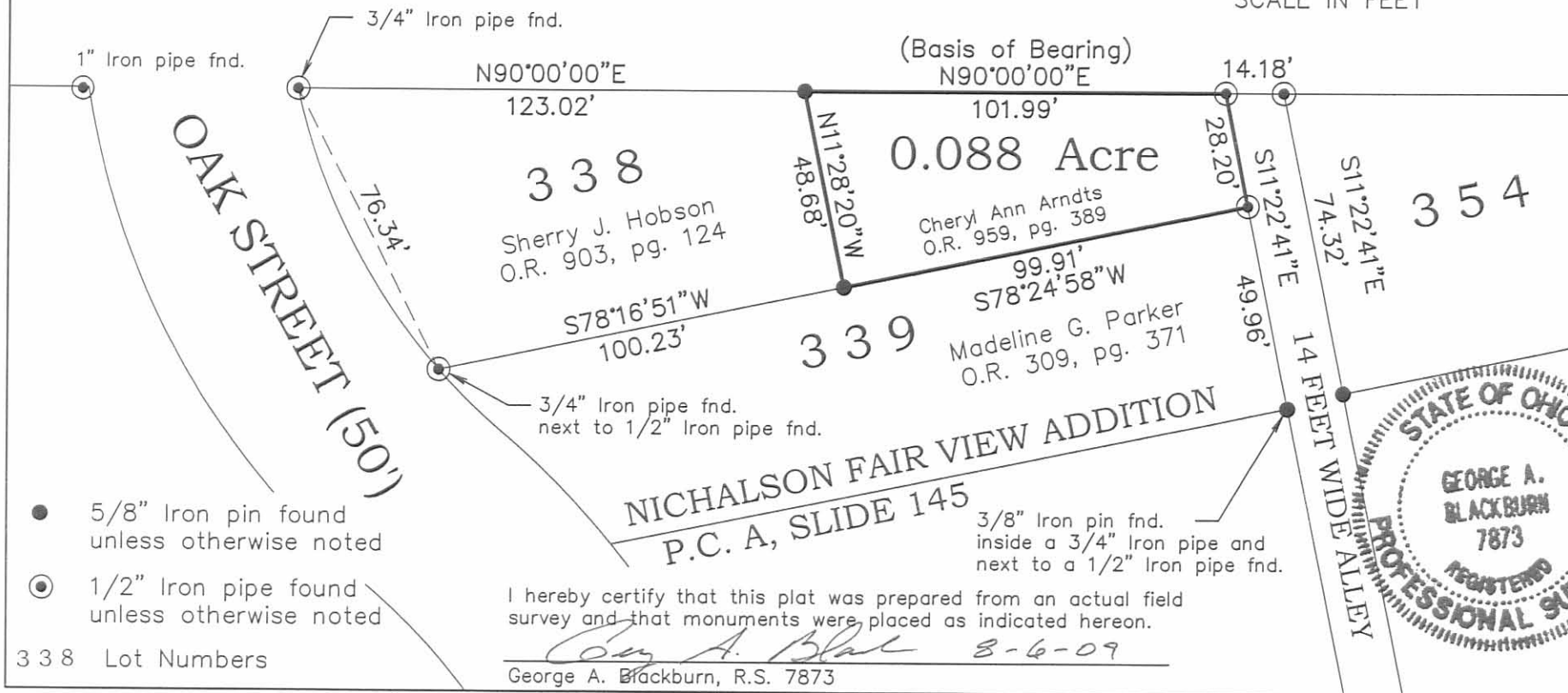
INDEXED ON MAP  
 7902 2P

REC'D 8-11-09 SMY GK

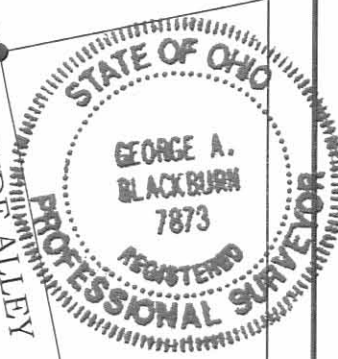
PLAT OF RETRACEMENT SURVEY IN  
SECTION 34, TOWN 6, RANGE 8  
VILLAGE OF LAKEVIEW, STOKES TOWNSHIP  
LOGAN COUNTY, OHIO



**BROWN STREET**  
(Variable Right-of-Way Width)



I hereby certify that this plat was prepared from an actual field survey and that monuments were placed as indicated hereon.  
*George A. Blackburn* 8-6-09  
George A. Blackburn, R.S. 7873



**BLACKBURN SURVEYING**  
12125 Green Street  
Middleburg, Ohio 43336  
(937) 666-5605

DATE: 8-6-09  
SCALE: 1" = 40'  
F.B. 17, pg. 33  
Filename: Arndts 8-09

**PLAT PREPARED FOR  
CHERYL ANN ARNDTS**

Sheet  
1  
of  
1

INDEXED ON MAP  
7902 3P