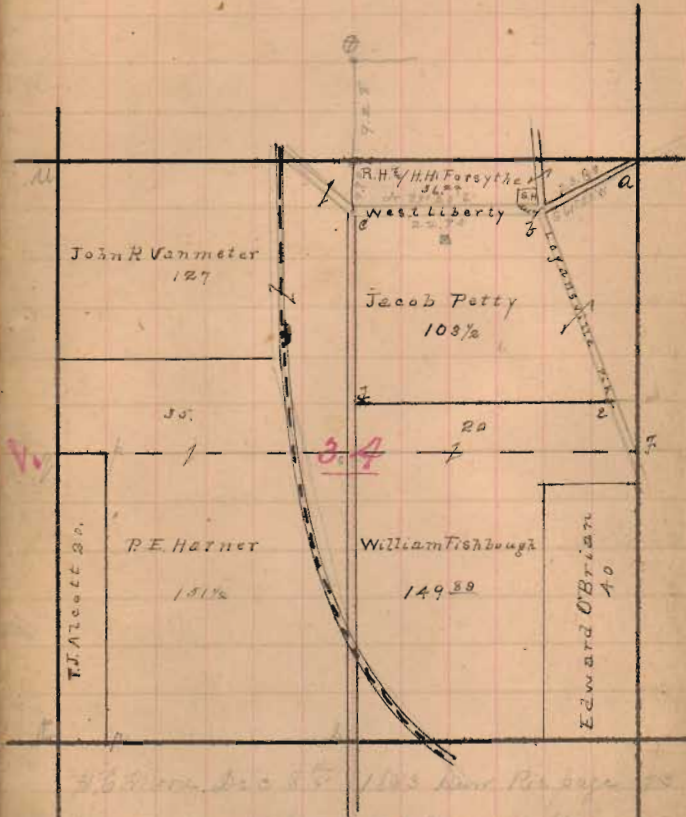


35



333.00m. Dec 25. 1883. Run Per survey
 a long stone in x road line 20.00' or so on hill
 3.00' stone x road a 1/2' with road 25.00' 20' or 23.00' at
 c' stone at 1' 22' 12. 1/2' or 15.25' or 2.33
 3' stone intersection of fence @ 20-19-1/2' per line at 22.5'

33

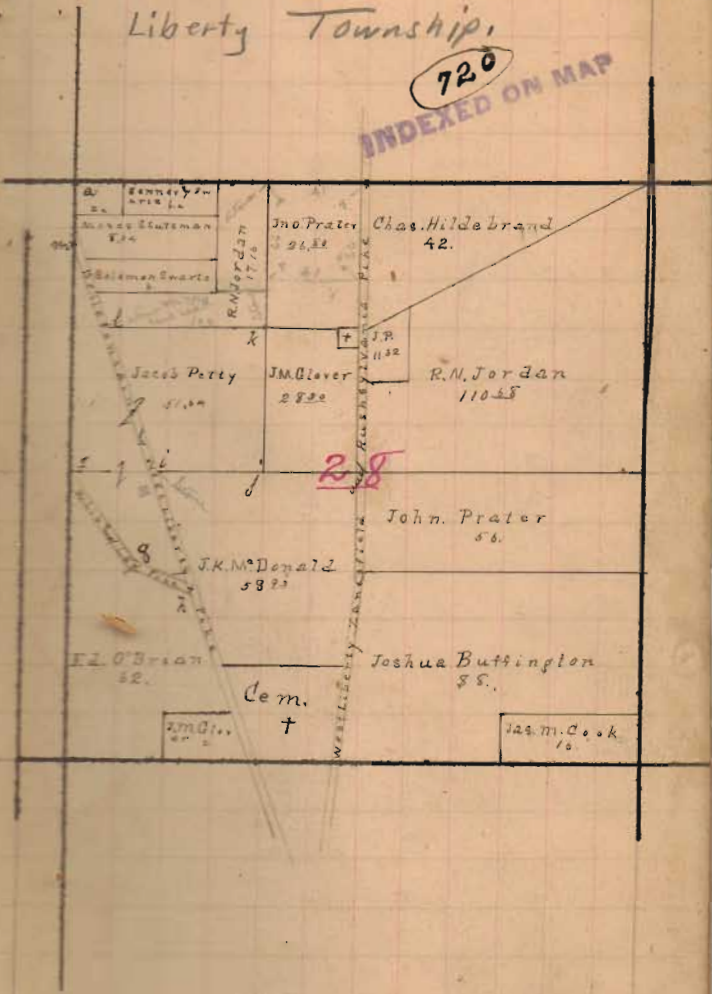
8

29

Liberty Township,

720

INDEXED ON MAP



27

Leillian A Bartram

	35	29	23
	T 5	R 13	
U			
	34	28	22
T			
	33	27	21

Aug Field Notes

- 4. Red Oak 13' N 130° E 17'
- T. 11. 14' N 65° W 13' 3/4 R. Oak 14' S 61° E 13'
- 2. R. Oak 15' N 45° E 14' W 11. Oak 14' S 31° W 13'
- 3. 11. 10' N 80° W 12'
- 4. 11. 10' N 70° E 8' W 11. 12' S 30° E 8'
- 5. post oak
- 6. post oak
- 7. post oak
- 8. post oak

East to pike corner on east to Kelly
with pike to line 32 for Tom R. Miller and
N side of said land,

with said line to Reg. con 60 m. g. l.

From Reg. con - T. 20 N.

Reg. con - 1000 gr Dec 25

North 6 poles to E side of road W. 1/2 S. 1/4

along E side of said road to stake

East 50 poles to W side of pike

S 1/2 E 26 1/2 pole stake in middle of pike

West to cor con. To mark Reg. con of land

deed of Samuel H. Smith to J. H. Miller

part of the land owned by R. J. Shields to

F. Hauger

1 part Reg. con Dec 4 T 4 R 13

Reg. con Reg. con Dec 20 near R. Oak marked corner

West with Dec line To pole

South with bearing of E line of Dec 60 poles

East " " " " " " " " " "

North " " " " " " " " " "

5-4000 - side Reg. con of Dec 35 T 5 R 13

said land to a same middle across said
quarter from east to west and from north
across line

2- 3000 gr Dec 34 T 5 R 13 Excepting
one acre by W. H. Smith on to R. J. Shields and
the remaining 7000 a. acre by W. H. Smith to
be as to W. H. Smith

W. H. Smith to R. J. Shields Mar 1 - 1829

4000 of S side Reg. con Dec 34.

Reg. con stamp on road W. 1/2 to Kelly. other part
line of Dec corner road and at S 1/2 E of Reg. con

North 37 1/2 pole stake four feet south of

small black oak bush

West 170 pole cross road at 25 poles to W. O.

5700 2000 and on g. 8632 17

South 37 1/2 pole black O. S. 12 1/2 miles

East 170 pole Reg. con 40

Hiram White

- Durr Rec. Vol B. 141. Nov 18. 48
- 1/2 acre SW cor sec 25 - 8.00 x 0.18 3/4 NW 38
- and High 15' 2142 38
- East 46 p. 7 in on side Spring field of Handbury
- Free corner pike
- SW 1600 26.2 p. 7 in pike
- 0.25 1/2 7 1/2 W. of High road 7 in E end road
- S 35 E 25. to 7 in road
- S. 6 p. to 7 in cor. Ea almost

- Fred Hanger. 4 to a SW cor sec 25
- Durr Rec. Vol B. 142 Nov 18 - 48
- Reg 7 road side W. of Bull road
- about 52 p. W. of High road.
- SW 3 NW 17. 7 in road over little to
- East 60.75 p. 7 in waite W. of Bull road
- S 16 E to 7 in cor. 4 1/2 a.

S. P. Miller 33 a

- Durr Rec. B. 212, Apr 25 - 30
- 1/2 acre SW cor sec 28.
- Reg SW cor sec 28.
- S 1 1/2 W 82 1/4 p 7 in on line one

- S 55 E 16 1/2 p. 7 in pasture
- S 11 1/2 W 82 1/2 7 in on road
- S 55 W 16 1/2 with road to Reg. 33 a

- G. B. McDonald from Sheriff
- Reg at stone W. of Bull pike and line 18 1/2
- S 2 1/2 W (at it)
- with line S 13 1/2 E 25.6 with NW cor + corner
- centrally with 15 p. in cor. 17.5 at W. of Bull pike
- S 12 E with pike 5.70 ch
- to 7 in 16. at W. of line, 32 + Hanger 4 1/2 a
- to 7 in 20.21 to 7 in cor. 5 1/2 a

- Red Shell to W. of Fishbough
- to 7 in 91. Mar 2 - 1853 = 169.83 a
- corner post planted and set as center of S line
- of line from north road and grass line
- to 7 in 18.6 to stone corner to NW cor. with
- with line S 58 E 146.2 p. station on east side
- of road from W. side.
- to 7 in 3 side of road S 37 1/2 E 42. p. stone in
- east line of sec.
- to 7 in line 2 NW 35.3 p. to a stone from

Line W. R. Beth Shields, Hingham

March 14-1835

Beg on line dec. No 34-5-18 from N 1/2 S
 and N 1/2 E 49.37 ch from stone in center
 of d. line of dec (= L S) N. O. 24' or east 12'
 = S 87 1/2 E 42.65 ch from stone on E line dec
 and N 1/2 E 9.37 ch from T. P. Miller N W 2

Ed. Chisler 40 a

Henry Fulton Perry 40 a Weymouth

beg at S E c line 34

- N 1 E 129 3/4 p. to stake, Hick 14' S 2 1/2 E 10
- N 89 W 48 3/4 p. to stake
- S 1 S 3 N 129.5 p. stake in S line dec
- S 89 E 57.7 to beg con 40. a

Shields Perry 2 1/2 a to Hanger

Beg from S E c line Beth in E line dec

- N 85 W 26 1/2 p. to W. road
- on W. road S 42 E 42 p. stake in E line dec
- with E line dec N 1 E 32 to beg con 2 1/2

1293
 220
 A. 5
 3