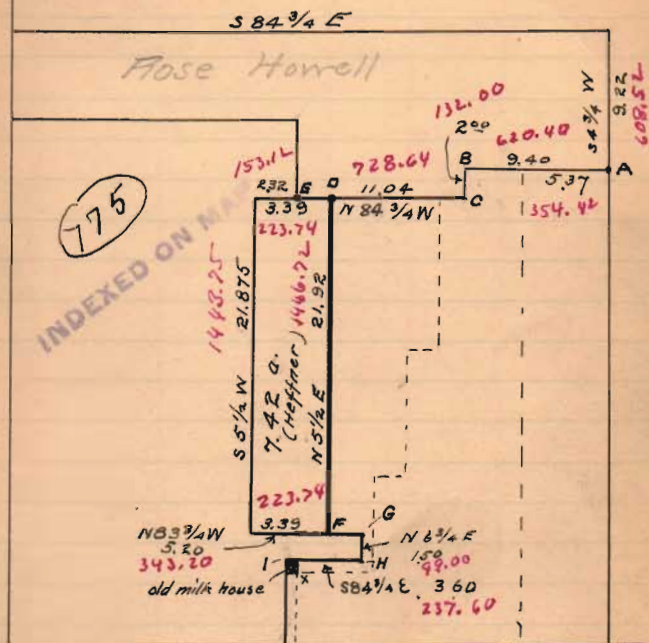


Carter - Heffner



- A. 3/4" Gas pipe, 32" elm N 75 E 9.1ks 5.94
B, C. 3/4" gas pipe in old fence corners.
D, F. " " each end of dividing line
E. gas pipe, located from old wit. - 18" W.O. stump, decayed, S 58 W, 36
G, H. gas pipe
I. gas pipe, N.W. of old milk house

The 16' rt.-of-way correctly located, Deed incorrectly locates milk house at S.E. of angle in lane (shown by x)