

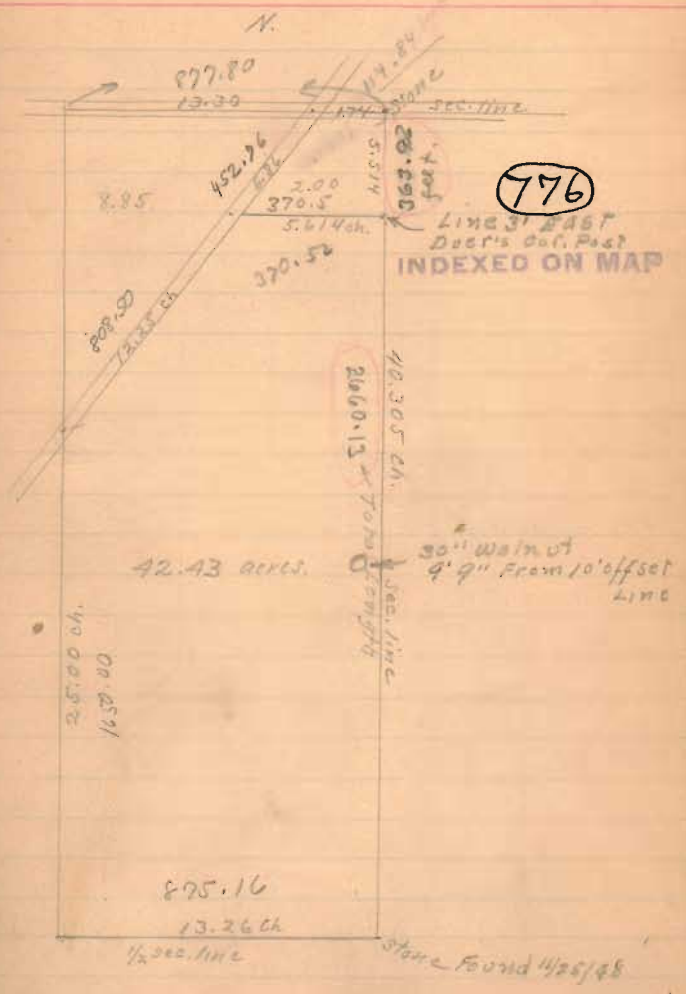
Liberty
~~Harmon~~ June 9 '10

M.A. Detrick Survey.
 Pt. NE 1/4 Sec. 2 T. 3 R. 14.

Commencing at a stone at N.E. corner
 of Section.

- S. with Sec. line 40.305 ch. to a
 stone at S.E. corner of said 1/4 Sec.
 Passing S.E. corner of Roth's 2 acre
 tract at 5.514 ch.
- West with S. line of said 1/4 Sec.
 13.41 1/2 ch. (53 3/8%) Crossing old line
 at 13.26 ch.
- N. with line between Detrick &
 Harmon. 25.00 ch. To center Car-
 liste Pike as near as could locate.
- N.E. with Carlisle Pike 12.25 Ch.
 To S.W. cor. of Dan'l. Roth's 2nd Tract.
- E. with S. line of Roth's 2 acre tract
 5.614 ch. to Roth's S.E. corner at Sec
 line, and being 5.514 ch. S. of the
 beginning.

Earl Löffler }
 Ed. Burkhardt } Chain



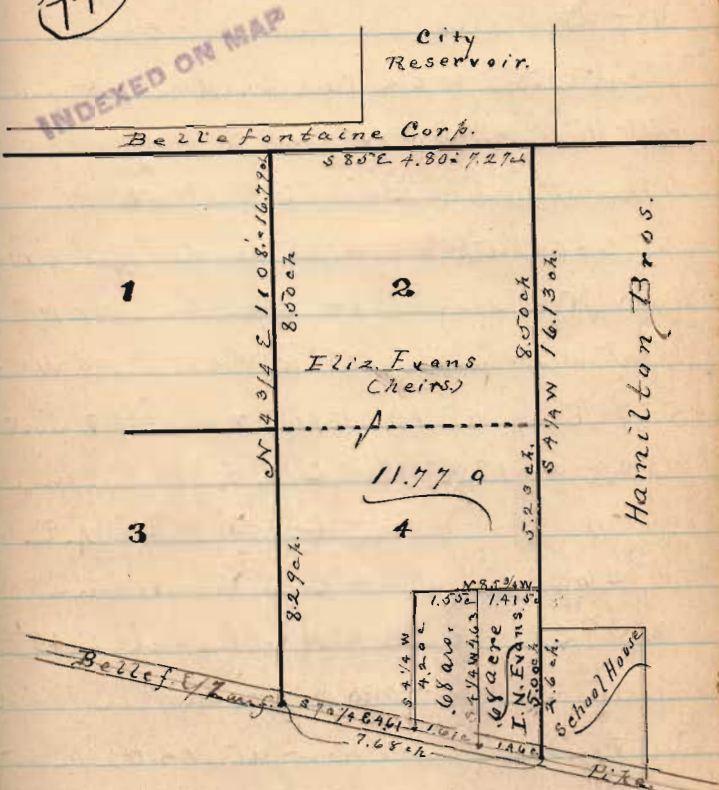
Sept. 29th 1898.

Cassidy-Evans Surv.

Mid SE ^{I/N} Evans. cont B&W pike S. 2
 SW < frame school house N 33 3/4 E 70.9 ^{105.2 ch}
 SE < 2 story frame dwell N 36 3/4 W 92.1 ^{139 3/4 ch}
 Old Mt Gal 22" or 21 1/2 E 56.1 ft = 80 fks
 (to cent of town 57') Chillicothe st N 85 W
 Start SE < Er. with line E. of Hamilton Bros
 or 4.14 E. at 1007 1/2' pass cent Chil
 produced eastward
 at 1236 N E < Er. of Harn Bros in
 E line of Bellf. Corp land. Res. lot
 Start NE < Evans. with S line " " Bellf.
 at 480. = 4.27 ch
 at 480 1/2 feet NW < Evans NE < to
 the Centre. corner N 85 W
 then on S 43 1/4 W with W. line Evans
 (flag & 1A) at 1108 1/4 feet R.R. pike
 in B&W pike at 5 1/2' E. of cent of grade
 there with pike S 70 1/4 E
 at 304 pass SW < lot. at 410.6 SW < E lot
 at 507 SE < E lot & SE < Evans East.

Part of surv No 4478

776



For mit to S.W. I.N. Evans. 68 a lot on top page
 172 this book. also pages 186 & 207 of Co. Surv.
 Records Vol. 6.

Burkhardt School Lot

Mch 23, 1912

Found stone SW $\frac{1}{2}$ Lake Tp
and SW $\frac{1}{2}$ Harmon Tp, set by HC Moore.

Wit: - 86 $\frac{1}{2}$ Hills res N 9 W, 32 1/2
SW $\frac{1}{2}$ Ed Burkhardt res, 5 1/2 E
103 1/2 - 1/2

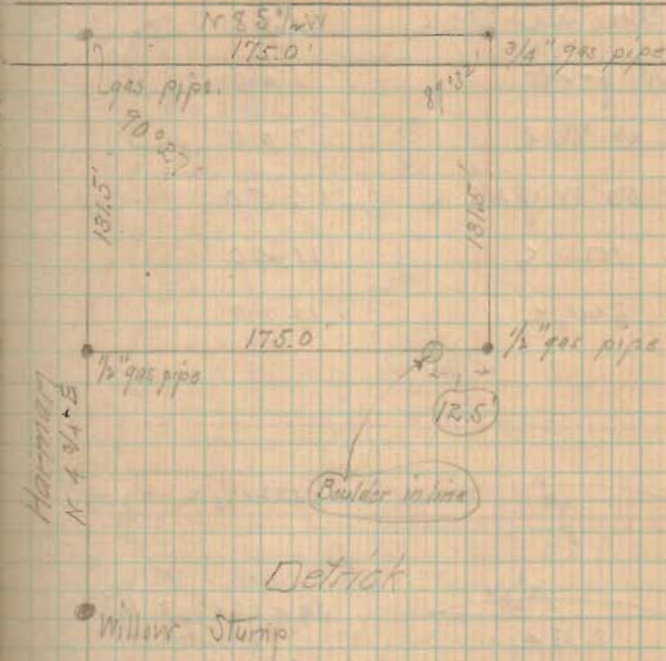
This stone is under the surface,
bleed, res., broken crack, and laid flat
blue limestone on top.

- with road N 85 1/2 W

at 13.29 = NW $\frac{1}{2}$ Penn D and NE $\frac{1}{2}$ Harmon

Found willow stump in line Harmon
& Penn Detroit about 250' S. of road,
which was identified by Ed Burkhardt &
Sam Harmon as in city fence row,
& accepted by Penn Detroit & Sam
Harmon as line between them.

Set over this stump & produced
line N 4 3/4 + E

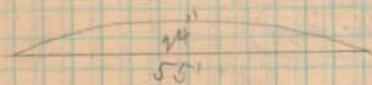


Detroit

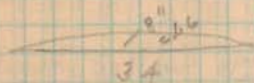
776

Bankhart School Levels

PM - down near SW \angle	1.51
Highest point	1.40
Ground at NE \angle	7.00
Ground 50' W of NE \angle	6.50
Ground NW \angle	11.40
Surf. SW \angle	12.20



$$55 \times 24 \div 2 = 73 \text{ sq'}$$



$$34 \times 9.66 \div 2 = 16 \text{ sq'}$$

$$73 + 16 =$$

88 Sum areas

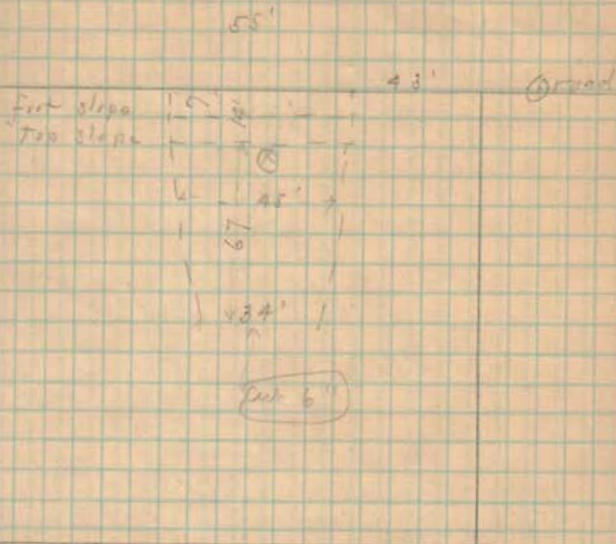
$$88 \div 2 =$$

44 Av. areas

$$44 \times 67 \div 27 =$$

109 cu yds.

(on acct. let road cut, call this 100 yds)



X = high point

Contour for road reading = 5.40
 (= 12.2' cut from high point)

776