

Cl-stone

Twp. Road South 25+00 → 35.5' →

4110.5

14" B

Sta 0+0

1CH189 1141

110 A

stone (A)
 east of 1CH189. 141.5'
 set 0.0 25' from center of road.
 said point is 166.5 from stone
 set side stakes 100' 20ft each side

4110.7 stone B 14" North

790

INDEXED ON MAP

25+00 @ road south.

35.5 to substation

161.4 center rd

26 - 12' from Φ

27 - 8' from Φ

28 - 11' " "

1

11 2.2 from original line

9 1.8

7 1.4

Missed stone 2.2

0. 1.6 from original line

$$\begin{array}{r} 2 \\ 6 \\ \hline 10 \\ 7 \\ \hline 17 \end{array} \text{ C}$$

NW corner of sec.

21 West of \odot of Rd south

60' NW from 24" OAK snag.

201ks Φ of 15" boulder 2' North of Wedge
of gravel

Center of sec

261ks NE of NE Corner stump on Bayles farm

SW 1071ks from 18" spc on R.R. Ground

stone at West line of County Club 40.5' North
of stone.

Bayles House 1.8' south of line

spike set by newell. 3' North of line

Power sta. 40.2'

sta 25. 54.8' from original Φ S.

sta 24. 54.8' from " Φ

sta 22. 54.5' from " Φ

sta 18. 38' from " Φ

17 38' " " Φ

15 28' "

13 25'

0 $17\frac{1}{2}'$ $16'$

4 $14'$ $12'$

7 16.5 12.5 $9'$

9 $19'$ $15'$ $8'$ x

11 ← 21 $17'$ ← 7 → x

13 ← 22 $19'$ → $8'$ x

15 ← $21\frac{1}{2}$ $18'$ → $5\frac{1}{2}'$ x

17 ← $21\frac{1}{2}$ $10'$ → $5\frac{1}{2}'$ → x

18 ← 22 $10'$ → $4'$ → x

21 ← 19.5 $8\frac{1}{2}'$ 26.3 → x

28 $14'$ $8\frac{1}{2}'$ $29'$ x

27.3
4.5
134.5
163.8
27.3

450.45

410.2
166.0
577.0

Road No 190
Liberty Twp.

3/29/26

W. H. Montgomery
Wm Smucker
F. F. Knight.

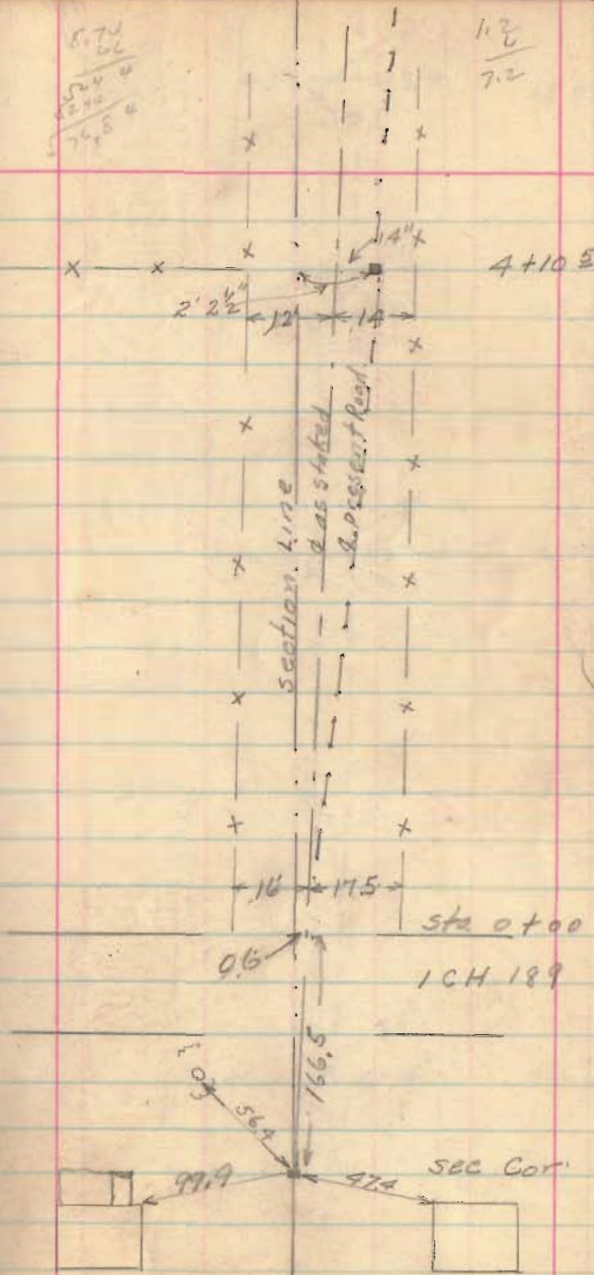
See page 11

791

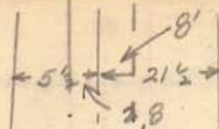
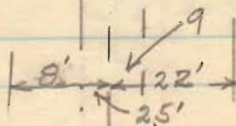
INDEXED ON MAP

5.74
0.6
5.14
2.24
7.48

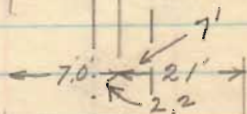
1.2
7.2



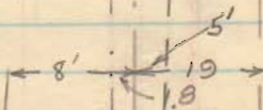
6

6
15+00

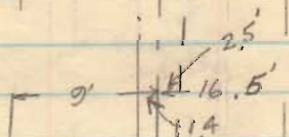
13+00



11+00

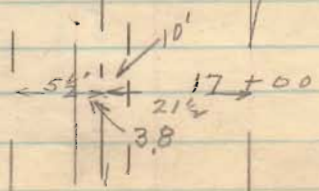
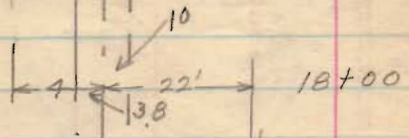
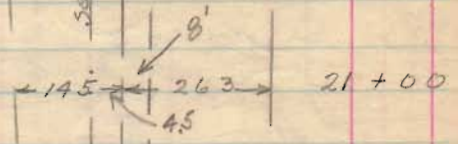
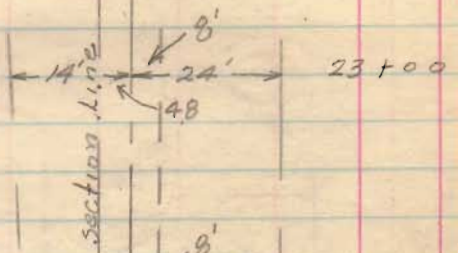
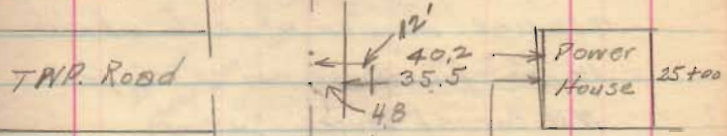
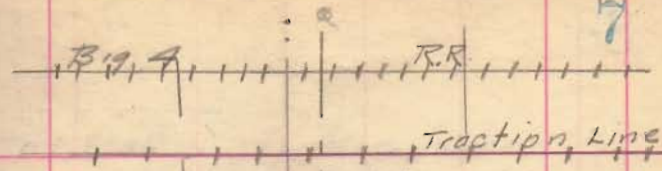


9+00



7+00

307.2
28.2
27.9



81 $\frac{6'-9''}{1-8}$
 $\frac{4.8}{1.2}$
 4.0

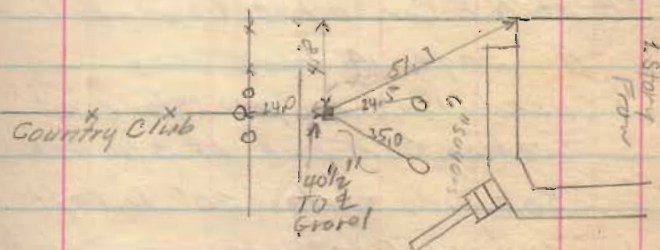
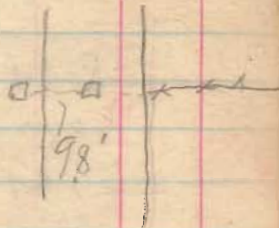
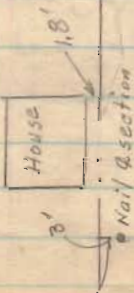
new line measured 49.20 ch at stake
 14' 6 1/2" from House and 24' 6 1/2" from
 NW Cor of House See Page 9

TWP. ROAD

stone Boulder
20lks.

24" WD
3229
40'
6 1/2"

stone found July-25-1937
 By Mrs W. H.
 McKeever

2 story
Frame

9

See page 11 - This Book

Road 190 Liberty

FF Wright

WA Montgomery

WM Smucker

Line established per survey

by S Buchanan in 1883

see book 300x page 17

measured 44.20 ch from stone
at NE Cor. of section per line

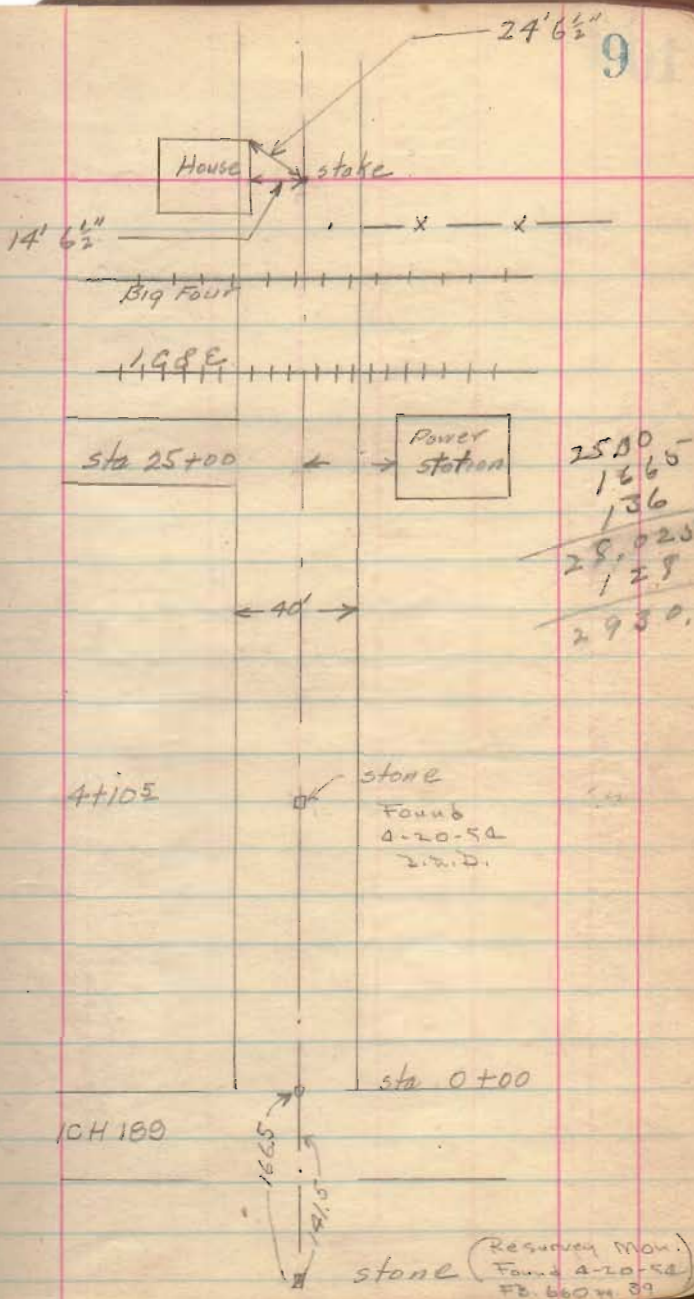
A. page 14 book 300x

used line as per stone at
section Cor. and at sta 4+105

set side stakes 20' to left
and right at alternate stations

Road width 40' per
Commissioners journal Vol 9.

page 286 and Vol 10 page 82



August - 1943

Survey to establish Qr. Cor. between
Sec. 31-4-14 ^{and} Sec. 36-5-13 - Liberty Tp.

Qr. Cor. stone not found - Reported by local
citizens that it was removed several years ago

"A" Found Stone SW Cor Sec. 31 - Field book 559 p 57

"D" Found Stone near N. road ditch - Cor. Lynn - Sowers
New Wit: -

Notch & nail in N. root 36" WD. SW - S. side road - 64.00

Notch & nail in W. root 30" Cottonwood NE. 12.40

Produced line A-D to E - set stake near $\frac{1}{2}$ road

"G" Found stone SE cor Sec 31 - Field Book 448 p 5

"F" Found stone set by Buchanan in Sec. Line - 1883 -
- Field Book 300x p 17 -

Produced line G-F to E - came out of E

Set Mon. at "E" for Qr. Cor.

Wit: - 18" Apple tree - South 51.5
Cor. strip SE cor Brayles res. 39.1
Power pole - S of W. 61.9

"B" stone 1.8' S. of line as run

Wit: 56" Elm SE at S. side of road - 41.7
14" W. Cherry - South - 22.0

"C" stone 5.0' S. of line as run

Wit: - See page 8 this book

In sheep
Dairies
Dyert
Reid

