

## Survey for Miss Mathe King

Measured from fence line East  
93<sup>3</sup>/<sub>4</sub> ch. found stone 11 ft.  
from  $\odot$  rd West.

Went to Kings West line found  
stone measured 232<sup>5</sup>/<sub>8</sub> ch struck  
same stone.

measured 3 ch placed stake  
on line between stones  
N 83<sup>3</sup>/<sub>4</sub> W

Began at  $\odot$  Sec measured

19.83 ch. Ran line North to  
line.

14.73 Southside of Lane  
15<sup>00</sup> N

20.25 ch measured

N 6<sup>1</sup>/<sub>4</sub> E

Measured 2 ch 583<sup>3</sup>/<sub>4</sub> E  
to  $\odot$  rd

5 24<sup>3</sup>/<sub>4</sub> E 2 ch

14.63 southside lane  
14.90 North " "  
18.50<sup>2</sup>/<sub>8</sub> ch

5 7<sup>1</sup>/<sub>2</sub> W

8<sup>2</sup>/<sub>4</sub>

N 81<sup>1</sup>/<sub>2</sub> W 3.04 ch

Sec 35 5-13

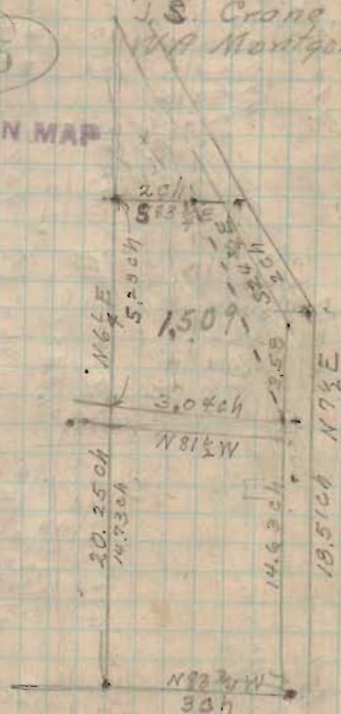
LIBERTY Twp April 11<sup>th</sup> 1922

J. S. Crane

W. A. Montgomery

1075

INDEXED ON MAP



185  
14.90  
3.55

14.73

1.02 ch

15.09

14.73

36.00

29.46

6.540

Rev 10-27-00 SMJ OK ✓

# Lee Surveying and Mapping Co., Inc.

Land Surveys • Topography • Subdivisions • Construction Layout

117 N. Madriver St.  
Bellefontaine OH 43311



Phone: (937) 593-7335  
Fax: (937) 593-7444

## DETE 66.340 ACRES

Lying in Section 35, Town 5, Range 13, Liberty Township, Logan County, Ohio.

Being all of the Janet Lou Dete original 57.39 acre, 5.79 acre and 1.36 acre tracts as deeded and described in Official Record 466, Page 408, Tracts I, II and III of the Logan County Records of Deeds and being more particularly described as follows:

Beginning at a railroad spike found within the right-of-way of State Route 508 at the intersection of the center-lines of the original County Highway 191 and Township Road 188.

THENCE, with the center-line of Township Road 188 (60 feet wide), N 4°-08'-00" E, a distance of 1395.13 feet to a 7/8 inch iron pipe found at the TRUE POINT OF BEGINNING.

THENCE, with the north lines of the Mark A. Kauffman 1.501 acre tract (O.R. 266, Pg. 601) and the Karl Z. Smith original 58.71 acre tract (O.R. 186, Pg. 570, Tract I), N 86°-37'-21" W, a distance of 1555.78 feet to a 5/8 inch iron rod set, passing a 5/8 inch iron rod found at 30.00 feet.

THENCE, with the west line of the southeast quarter of Section 35 and the east line of the Orville Dale McMillan, Trustee of the McMillan Revocable Living Trust Agreement 39.92 acre tract (O.R. 174, Pg. 409, Tract II), N 4°-53'-29" E, a distance of 2016.46 feet to a 5/8 inch iron rod set.

THENCE, with the north line of the southeast quarter of Section 35 and the south line of the Richard L. Yoder original 145.34 acre tract (Vol. 292, Pg. 212), S 85°-25'-30" E, a distance of 1041.21 feet to a railroad spike set, passing a 5/8 inch iron rod set at 1006.20 feet.

THENCE, with the center-line of Township Road 188 the following five courses:

S 26°-27'-59" E, a distance of 379.59 feet to a 5/8 inch iron rod found.

S 29°-04'-22" E, a distance of 449.69 feet to a 3/4 inch iron rod found.

S 18°-49'-33" E, a distance of 100.00 feet to a 5/8 inch iron rod found.

S 1°-28'-32" W, a distance of 200.00 feet to a railroad spike found.

S 4°-08'-00" W, a distance of 992.88 feet to the place of beginning.

Containing 66.340 acres of which 1.462 acres are within the highway right-of-way.

The basis for bearings is the center-line of Township Road 188 at State Route 508 being N 4°-08'-00" E, and all other bearings are from angles and distances measured in a field survey by Lee Surveying and Mapping Co., Inc. on October 16, 2000.

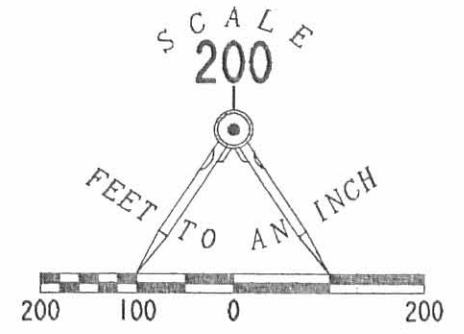
Description prepared by:

Jeffrey I. Lee  
Professional Surveyor 6359  
October 19, 2000



ORIGINAL STAMP IN GREEN L-3025

1075 ID



LEGEND:

- 5/8 INCH IRON ROD SET
- ⊕ RAILROAD SPIKE SET
- 5/8 INCH IRON ROD FOUND
- ⊗ RAILROAD SPIKE FOUND
- ⊙ 7/8 INCH IRON PIPE FOUND
- ⊕ 3/4 INCH IRON ROD FOUND

RICHARD L. YODER  
AND DARLENE D. YODER  
ORIG. 145.34 ACRES  
VOL. 292, PG. 212

ORVILLE DALE McMILLAN, TRUSTEE  
UNDER THE McMILLAN REVOCABLE  
LIVING TRUST AGREEMENT  
39.92 ACRES  
O.R. 174, PG. 409  
TRACT II

TRACT I  
(57.39 AC)

**66.340 ACRES**  
OF WHICH 1.462 ACRES ARE WITHIN  
THE HIGHWAY RIGHT-OF-WAY

TRACT III  
(1.36 AC)

TRACT II  
(5.79 AC)

MARK A. KAUFFMAN  
AND DEANNA L. KAUFFMAN  
1.501 ACRES  
O.R. 266, PG. 601

KARL Z. SMITH  
ORIG. 58.71 ACRES  
O.R. 186, PG. 570  
TRACT I

SECTION 35, TOWN 5, RANGE 13  
SECTION 34, TOWN 5, RANGE 13

TOWNSHIP ROAD 188 (60' R/W)

**SURVEY OF THE JANET LOU DETE  
ORIGINAL 57.39 ACRE, 5.79 ACRE  
AND 1.36 ACRE TRACTS  
OFFICIAL RECORD 466, PAGE 408,  
TRACTS I, II AND III  
SECTION 35, TOWN 5, RANGE 13  
LIBERTY TOWNSHIP  
LOGAN COUNTY, OHIO**

SURVEYED BY:

JEFFREY I. LEE  
PROFESSIONAL SURVEYOR 6359  
OCTOBER 16, 2000

COPYRIGHT 2000 BY:  
LEE SURVEYING & MAPPING CO., INC.  
117 North Madriver Street  
BELLEFONTAINE, OHIO 43311  
(937) 593-7335



ORIGINAL STAMP IN GREEN

D-388

DETE

L-3025-2

2 WORKING DAYS  
**BEFORE YOU DIG**  
CALL TOLL FREE **800-362-2764**  
OHIO UTILITIES PROTECTION SERVICE.

INDEXED ON MAP  
1075 IP