

Road 191
Liberty Twp.

Stakes Placed 20' from E for
40' Road Note However this
is a 60' Road. (Road established 1830)

0+12.2 would be section
corner. Note on I.C.H. Plans
& concrete is to west of
old Road E. See Plan ~~A-48~~
DRAWER R # 3414

1288
INDEXED ON MAP



Feb. 3-1932
Cloudy
No Frost
in ground. 74

7+21

Concrete floor
Not very good



5+24 Concrete Box
36" wide
30" High



13.6
7+00

14.7
3+00

15.7
Gate 27.85
Steel Post

16.2
2+00 Cemetery

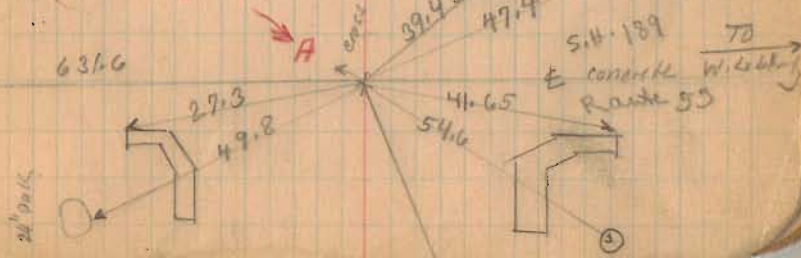
3.85 E.

17.4
1+00 Concrete Posts



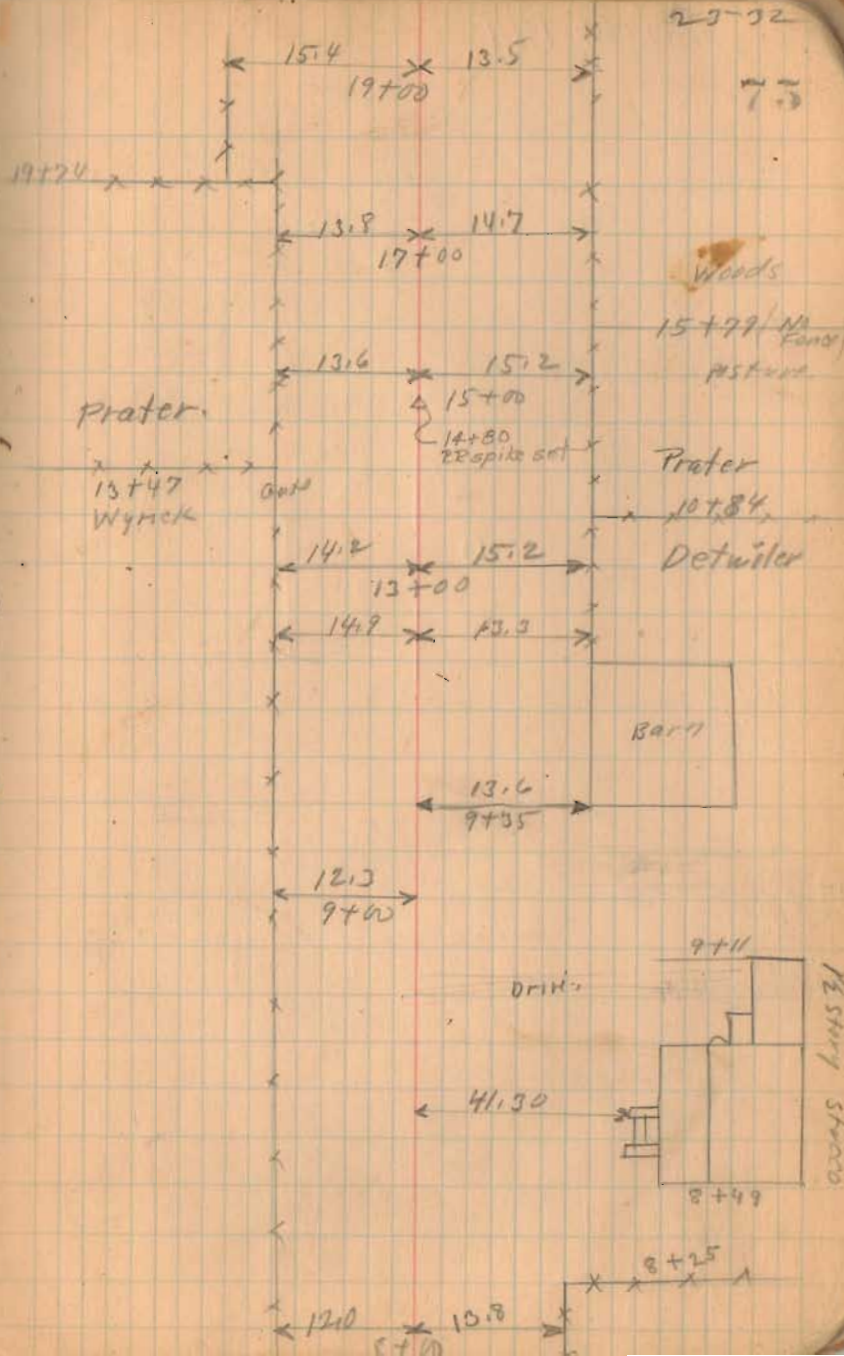
(No Fence)

(see Page 77)

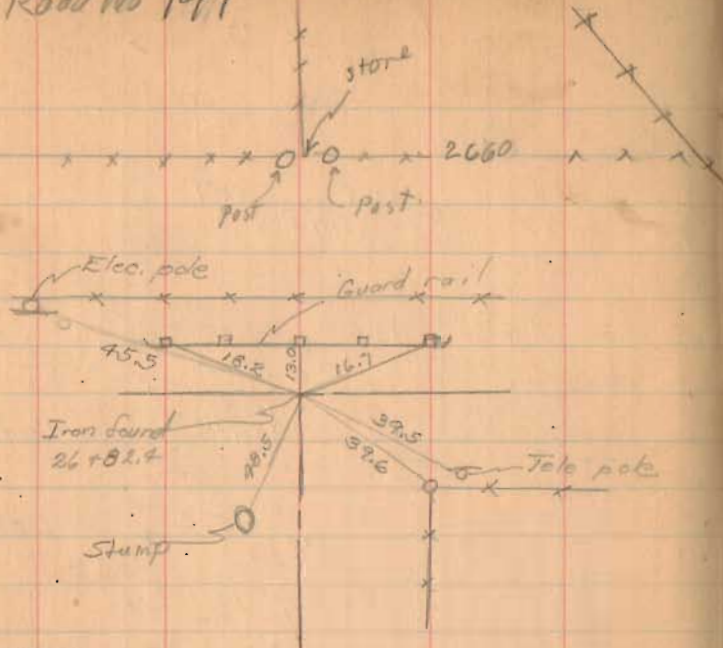


Road No. 191

1288
INDEXED ON MAP

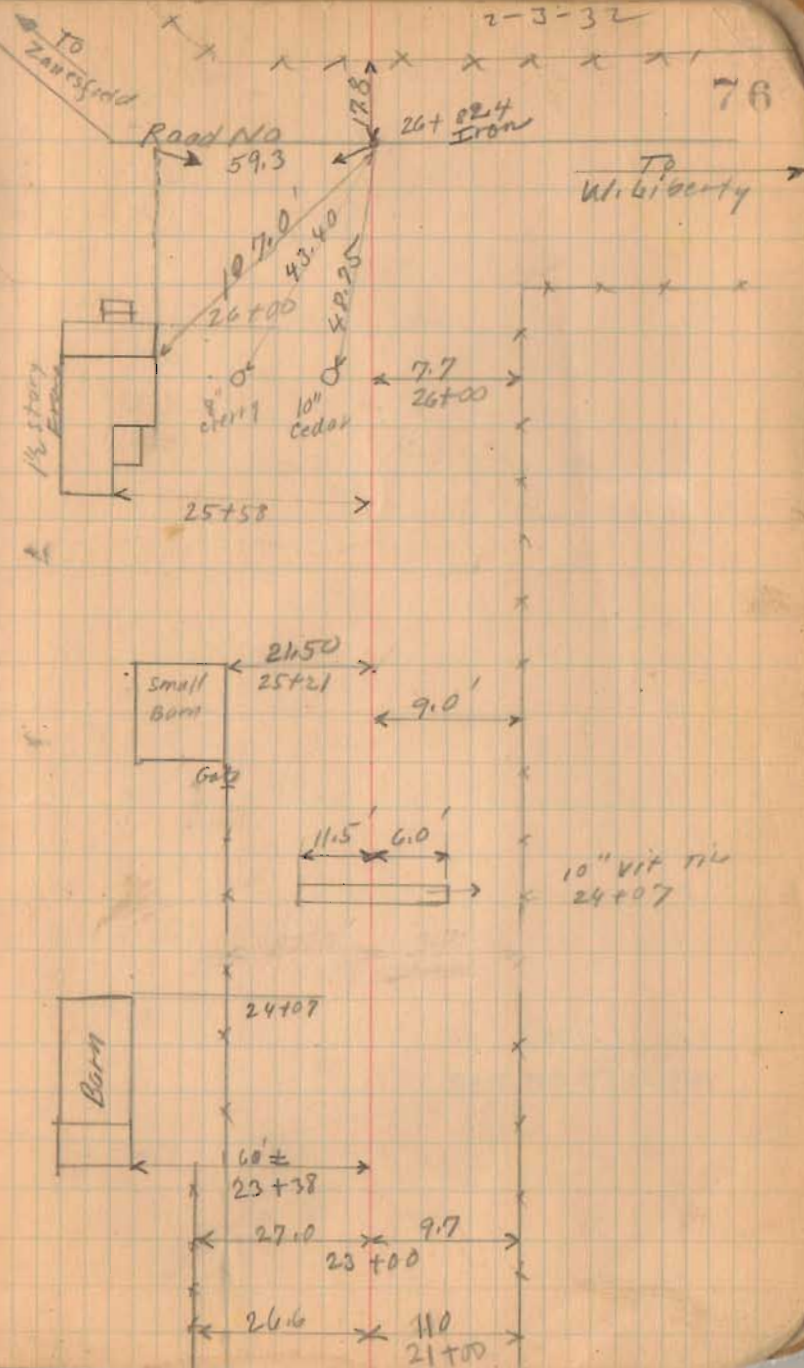


Road No 191



Witnesses
Sep. 18, 1956
CEK

1288
INDEXED ON MAP



11/20/44
F. Cook
G. Wilgas
M. Jensen

Road 191

Stakes Set for Monuments - 60" Road

Oct. 22, 1940

Stakes for 50' Road.

No Road Record found
That exactly corresponds
with this road.

5+00 (Mon) Hubs Set

1+00 (Mon) Left only (Hub Set)

0+50 (Mon) Right only (Hub Set)

1288

INDEXED ON MAP

Nov. 9 - 1936

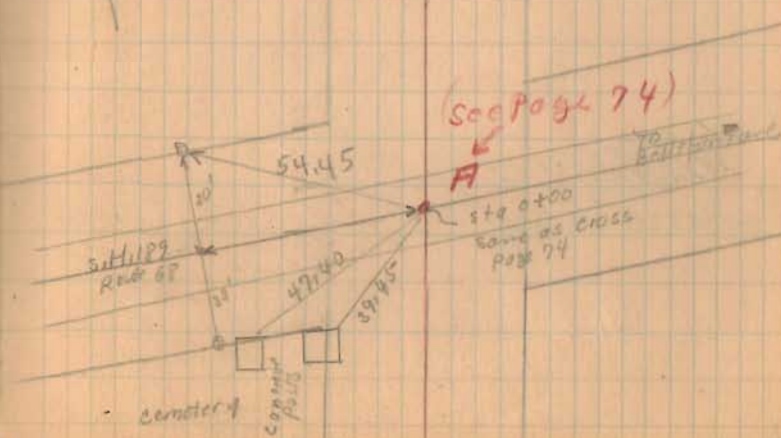
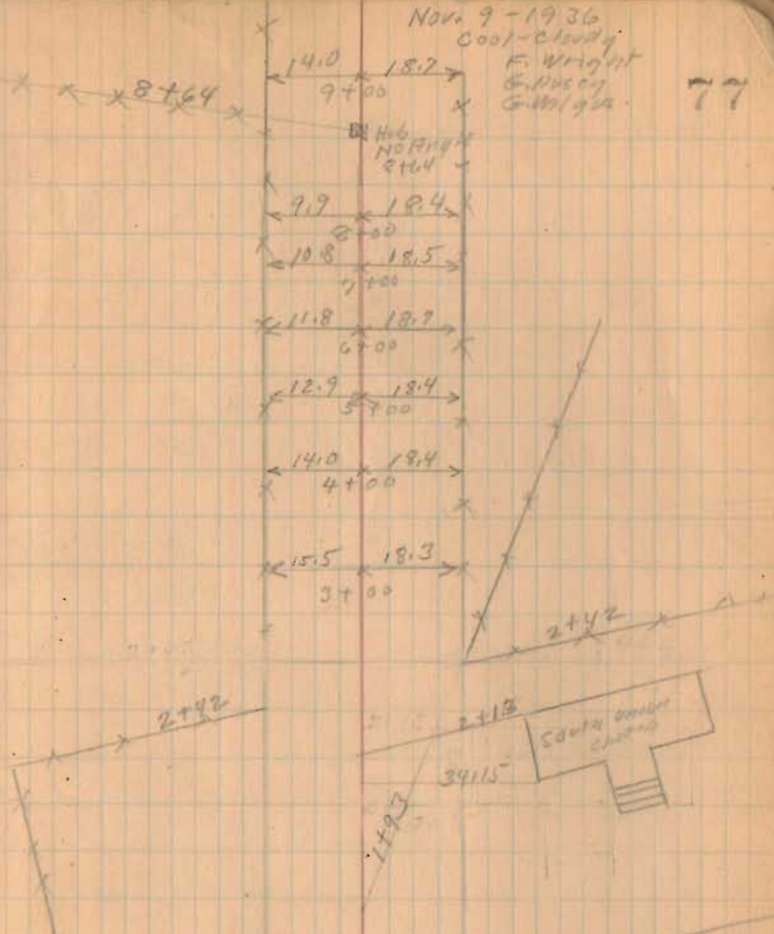
Cool - Cloudy

F. Wright

G. Wilgas

G. Wilgas

77



Road 191

14+00 (Mon.) Hubs Set.

1298

INDEXED ON MAP

10+00 (Mon.) Hubs Set.

