

Road. 29  
 Liberty - Monroe - Jefferson Twp.

See Book 511 Page 41  
 for 1929 Survey.

Oct. 18, 1939 - Staked 60'- 30' R&L from E.

(4753)

(2709)

(4753)

NW Post  
 25' from E

1345

INDEXED ON MAP

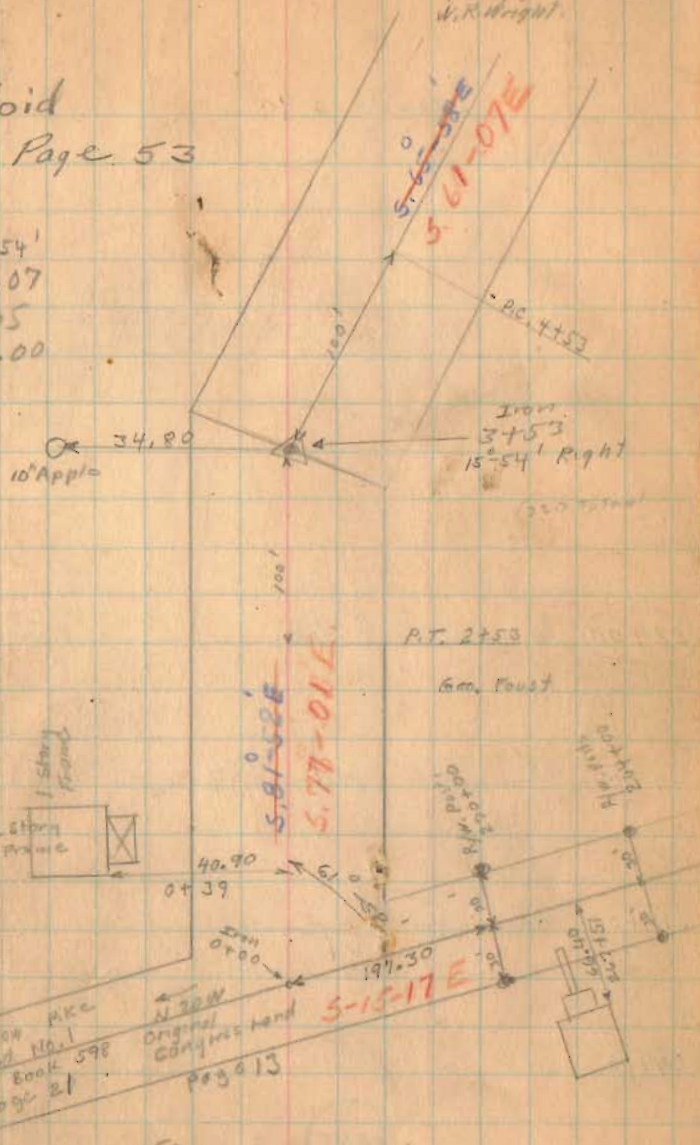
Nov. 13, 1937

F. Wright  
 G. Wilges  
 W. R. Wright

23

Yoid  
 See Page 53

$\Delta = 15^{\circ} 54'$   
 $R = 716.07$   
 $E = 6.95$   
 $T = 100.00$

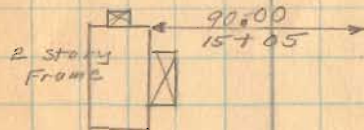


(See page 53)

Road. 29

10-12-32

24



x x 25+00 x Z

(22+00) Monuments (Hubs Set)

With Early

(17+00) Monuments (Hubs Set)

x x 10+95 x  
Patrick Fitzpatrick.

(12+00) Monuments (Hubs Set)

561-07E

(7+00)

Patrick Fitzpatrick.  
(old R.R.) 6+13

W.H. Early  
6+13  
Geo. Fout

1345

INDEXED ON MAP

Road 29

(37+00) Monuments (Hubs Set)

(32+50) Monuments (Hubs Set)

(27+12) Monuments (Hubs Set)

1345

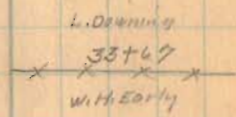
INDEXED ON MAP

56°-56'E

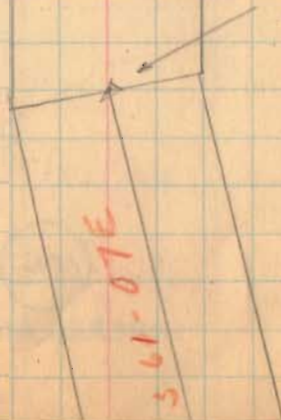
51°-05'-47"E

S. 64° E.  
Needle

561-07E



Don  
27+12  
0°-11' Right



Road 29

(44+00) Monuments (Hub Set)

Road No. 179  
see BOOK 607  
Page 45

137.0'

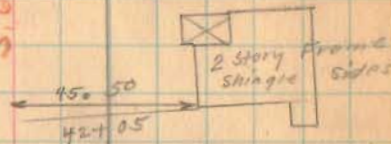
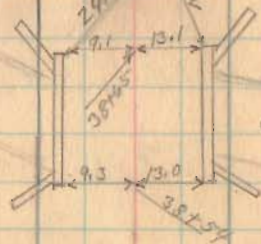
125.0'

F. Carr

N

RR. set 1/2 of 13  
Sta. 38+87.1  
Witness P.R.C.

5.60-56E

38+87 Iron  
FALILE  
J.E. DOWNEY  
38+87  
N.H. Early  
38+84.27Carr Ditch  
concrete  
slab.  
Bridge  
No 29-0.75N.H. Early  
L. Downey

(40+00) Monuments (Hub Set)

1345

INDEXED ON MAP

5.60-56E

Road 29

67+75 Monuments (Hubs Set)

63+00 Monuments (Hubs Set)

58+25 Monuments (Hubs Set)

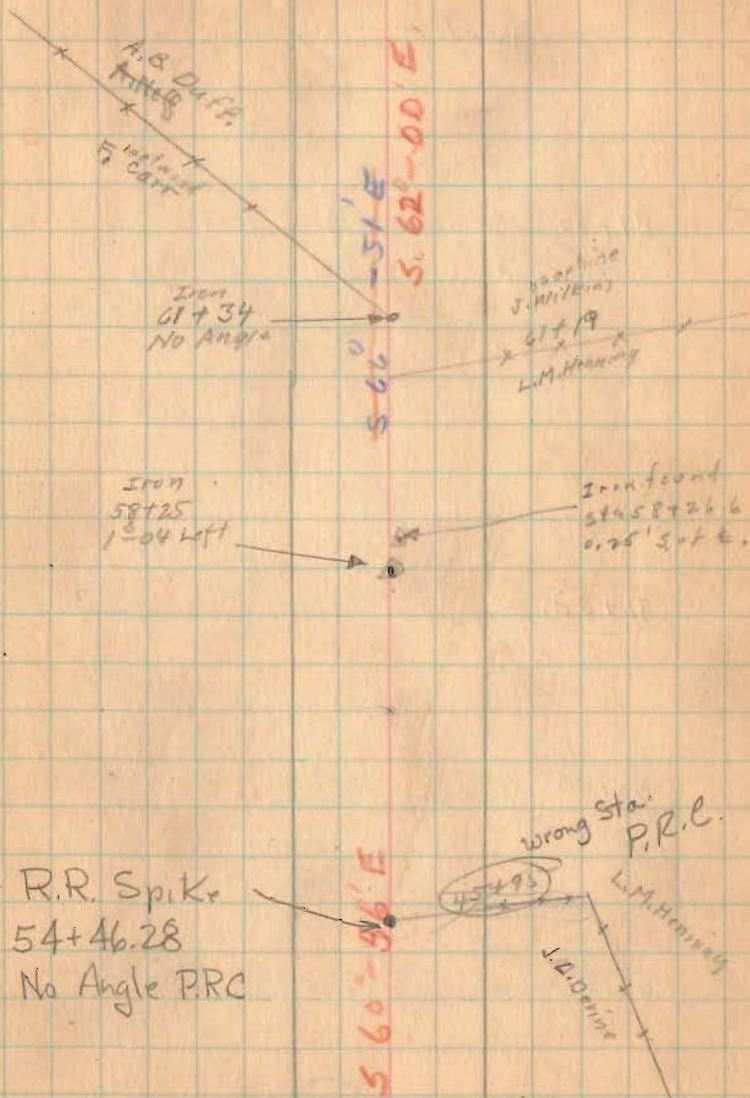
55+00 Monuments (Hubs Set)

49+00 Monuments (Hubs Set)

1345

INDEXED ON MAP

Nov. 15-1939 27  
Cloudy  
F. Wright  
G. Wright  
W.A. Wright



Road 29

87+00 Monuments (Hubs Set)

Monuments (Hubs Set)

85+00

Monuments (Hubs Set)

81+00

Notes Sta. 70+00 to 70+14 - 5" Cor. N. Side

76+00

Monuments (Hubs Set)

71+00

Monuments (Hubs Set)

1345

INDEXED ON MAP

11-15-30

28

Hubs Found  
5/17/69  
Set 3/4" Bar  
on N. side Hub  
D.L.O. 85+67

No Angle

Susie H. Heston

Mun. 61-54  
61-54  
73  
96-1

Road 55  
Book 607  
Page 28

No Angle

Memory

3 61-07E  
5 65-38E

75+43

1 story frame

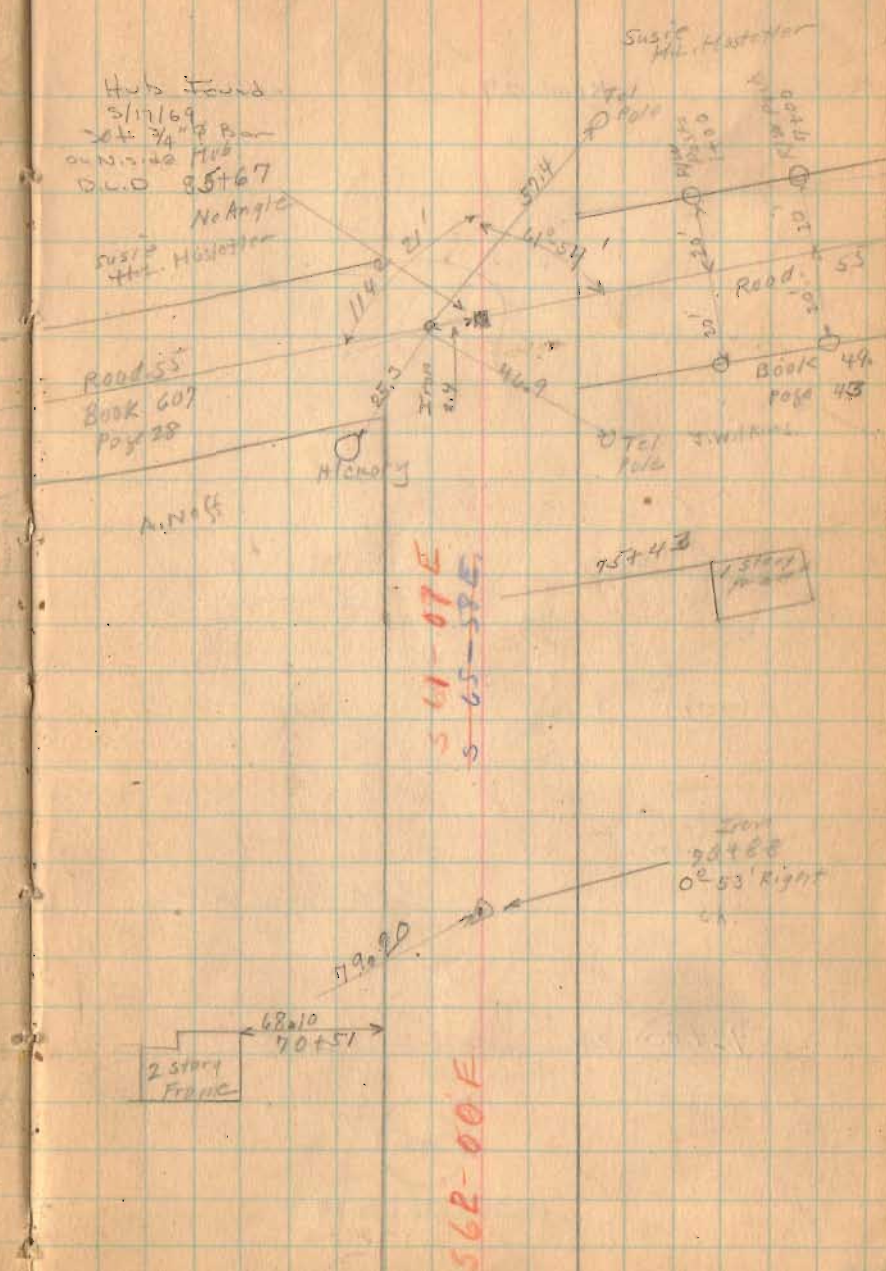
Iron  
30+88  
0' 53" Right  
OK

79+20

68+10  
70+51

2 story frame

562-00E



Road 29

11-15-25

29

95100

94100

See Page 52

92100

Monuments (Hubs Set)

1345

INDEXED ON MAP

Iron  
7°-18' Right  
95100

Iron  
3°-0' Right  
94100

25101

25101

See page 52

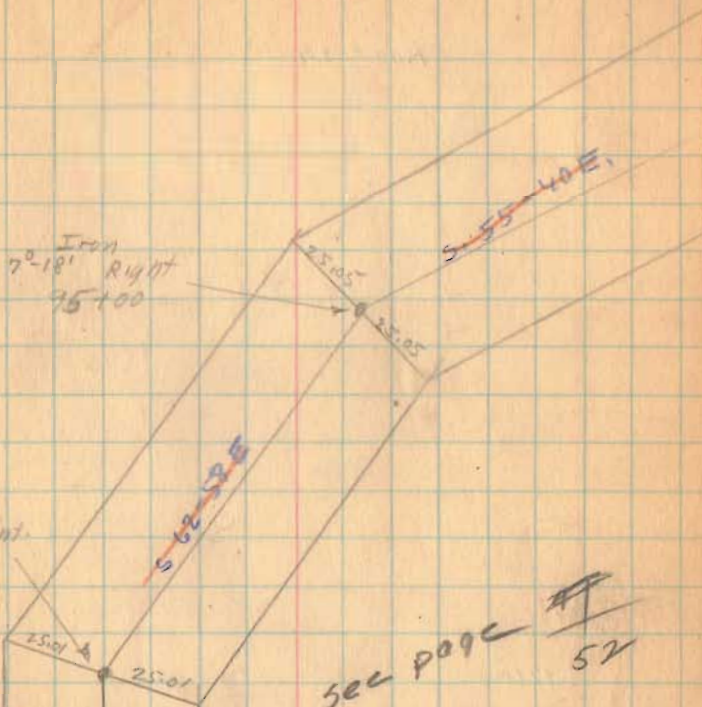
5.61-07 E.

5.65-58 E.

94  
55 67

8 9  
7 70

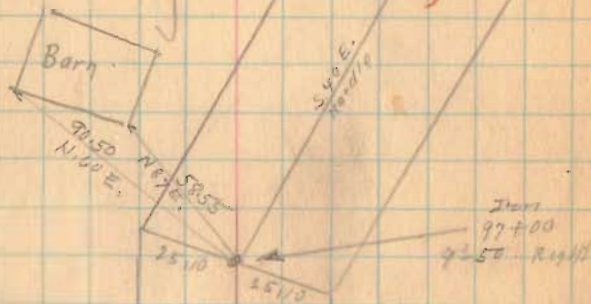
41



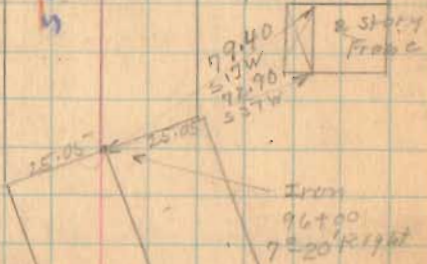
Road. 29

11-15-37

30



597-70 E.  
S 90° S



~~97+00~~

96+00

1345

INDEXED ON MAP



Road 29

~~111+00~~

108+00 Monuments (Hubs Set) end of Project.

~~100+00~~

103+00 Monuments (Hubs Set)

~~100+02~~

Tap Hubs Mon Set

~~100+00~~

1345

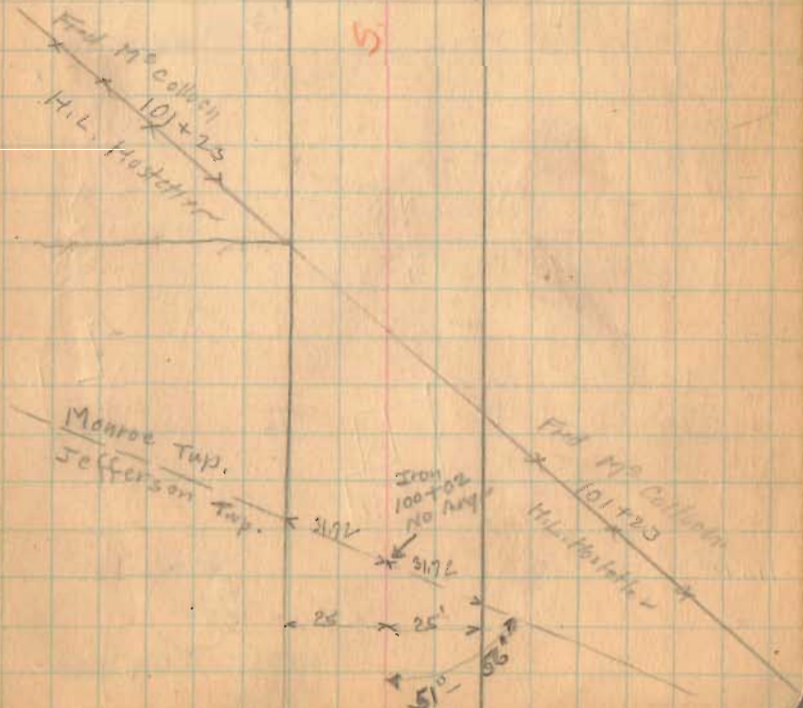
INDEXED ON MAP

11-15-37

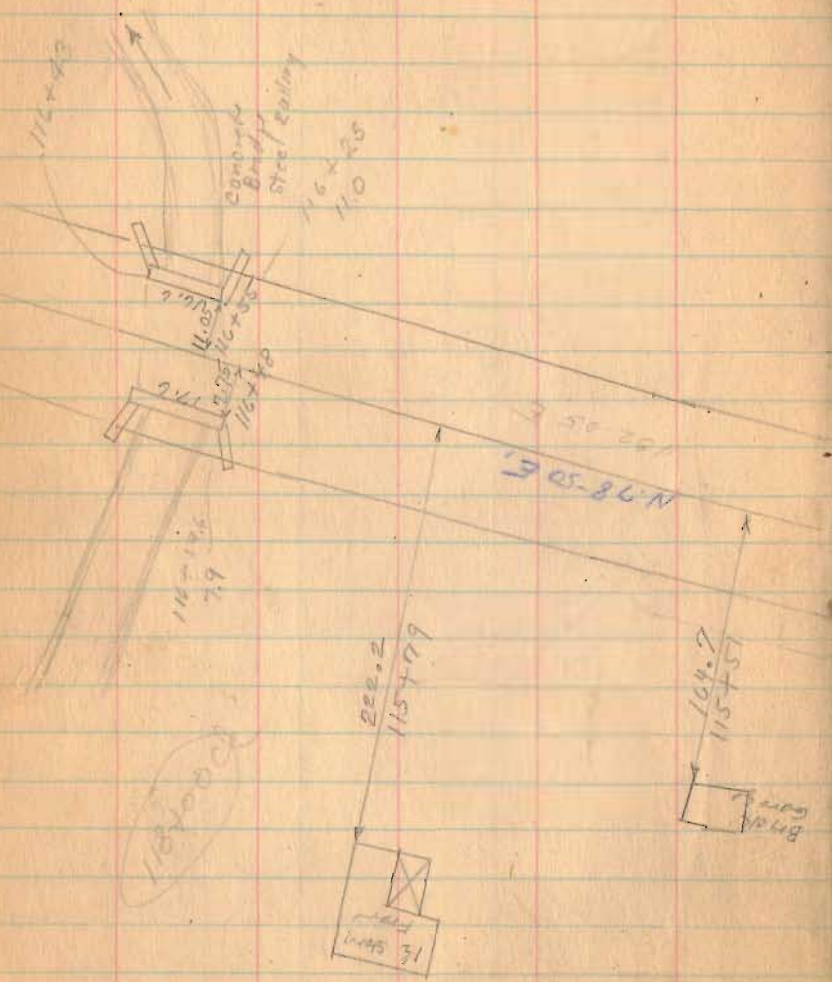
31

90  
2  
3

S. 83° - 46' E.



Road 29



115400

1345

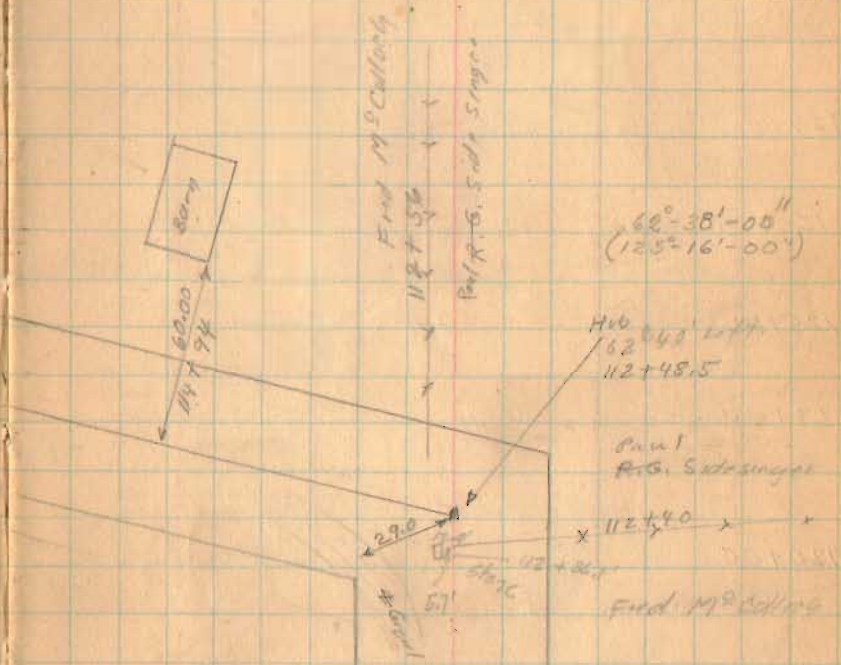
INDEXED ON MAP

11-15-37

11291  
11292  
11293  
11753

11291  
11292  
11293  
245.5

11256  
11255



S 38-30 E  
S 33-46 E

Road 29

127+00

126+00

125+00

123+00

120+00

123+57.2

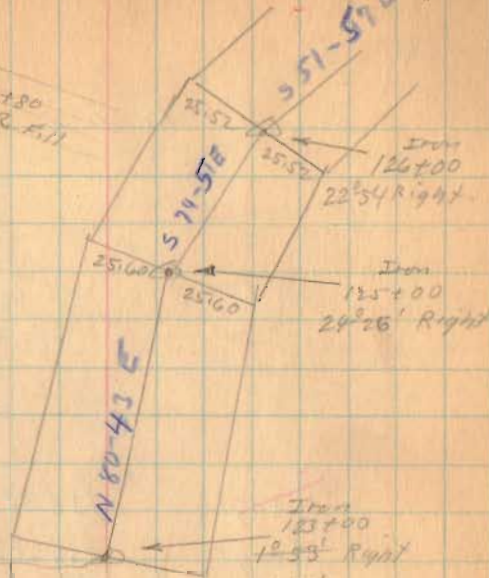
1345

INDEXED ON MAP

123 W  
116 SE  
684

11-15-37 33

125+80  
Old RR 4.11



Paul  
As. Sidinger

118+97

119+25

Walter

118+86

Fred M<sup>c</sup>Collogh

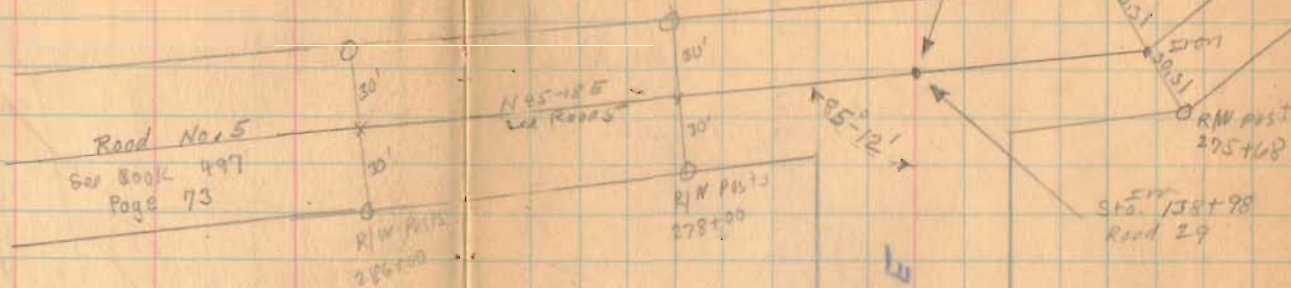
Paul  
As. Sidinger

118+19

Fred M<sup>c</sup>Collogh

N 78-50 E

Road 29



Length 138.98 Feet  
 Length 2.6322 Miles  
 Length 2.63 Miles

138+00

134+00

1345

130+00

INDEXED ON MAP

Nov. 16, 1937  
 cloudy - Light Rain  
 F. Wright  
 G. Wilgus  
 W. K. Wright

34

