

S.H. 607 Monroe<sup>9th</sup> zone Twp.  
State Route 287

MacCree Pike

Free Turnpike Record No. 5 Page 479

60' From {Lodden To {George Smith Corner  
          {Road No. 1        {Road No. 28

West Middleburg Pike

Free Turnpike Record No. 5 Page 393<sup>9th</sup> 394

60' Page 394

50' Johnson Pike Road 28 To  
Church Corner  
Road Record 5 Page 452

← Old County Road No. 15 from  
West Liberty To Union Chapel Church.

Union Chapel church To Middleburg  
old Co. Road No. 41

↖ Middleburg To S.H. 235 old  
County Road No. 119

(1467)  
INDEXED ON MAP





S.H. 607

22+00 Mon.

17+00 Mon.

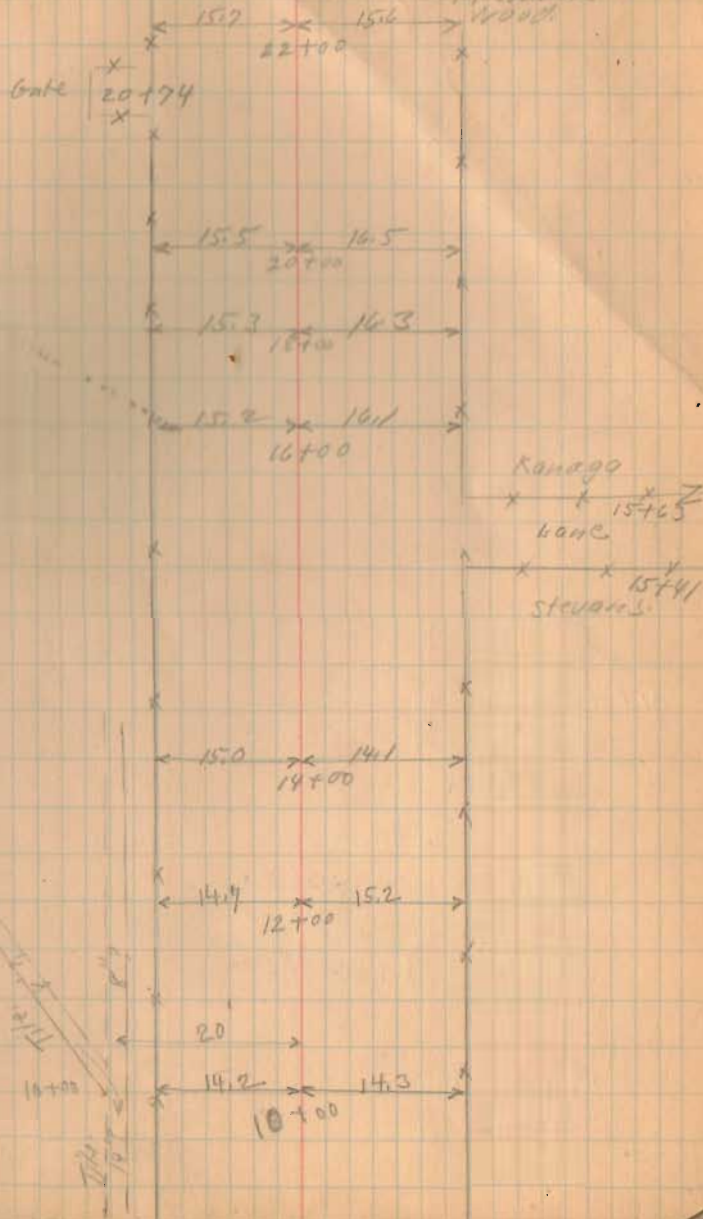
12+00 Mon.

7+00 Movement

1467  
INDEXED ON MAP

DEC-12-1931  
Clear - (Fog AM)  
Wright  
McKinnin  
Warr  
McAdams  
Wood

14



S.H. 609

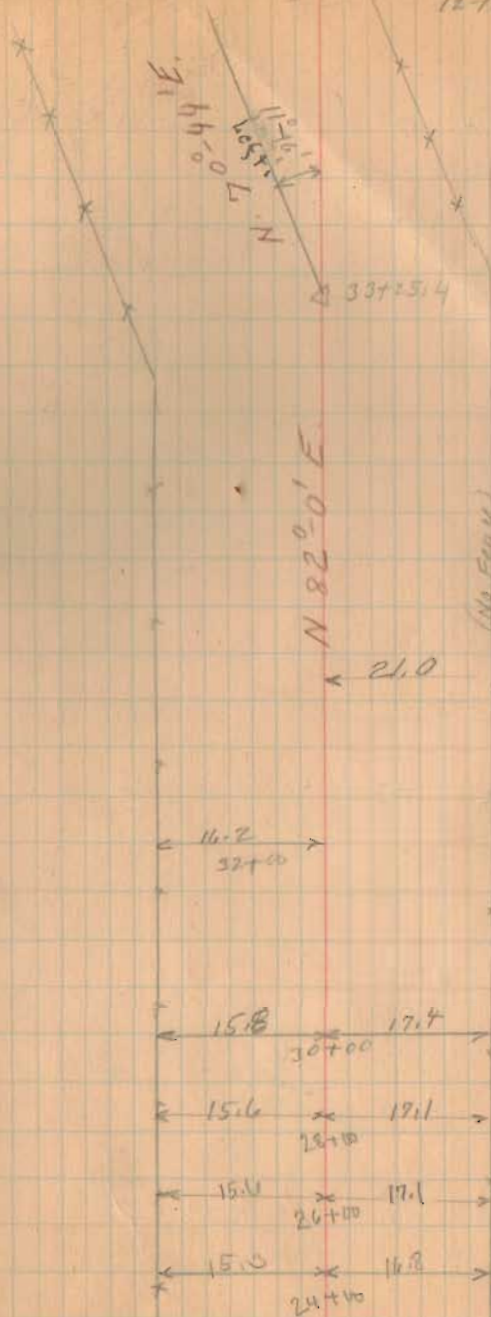
31+00 Mon.

1867  
INDEXED ON MAP

27+00 Mon.

12-12-51

15



$\Delta$  11°-16' Left.  
 P.L. 33+25.4  
 R. - 954.93  
 D - 6°  
 T. - 94.19  
 E. - 4.63  
 L. - 187.79 (Hrc.)  
 P.C. - 32+31.21  
 P.T. 34+19



ETWIN

No. Fence

(Lane)

Heister

31+52  
Kanaga



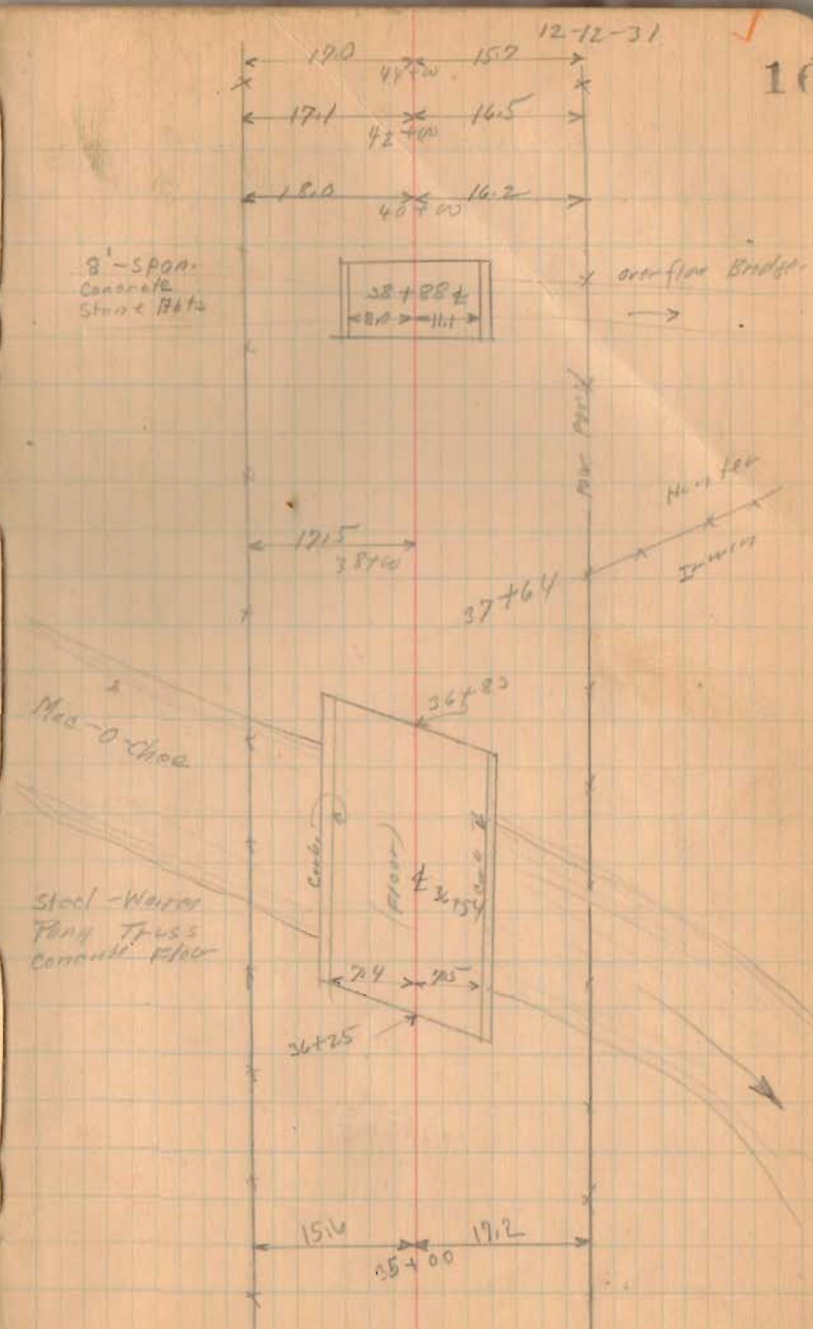
S.H. 607  
45+00 Mon.

40+00 Mon.

1467  
INDEXED ON MAP

35+00 Mon.

16

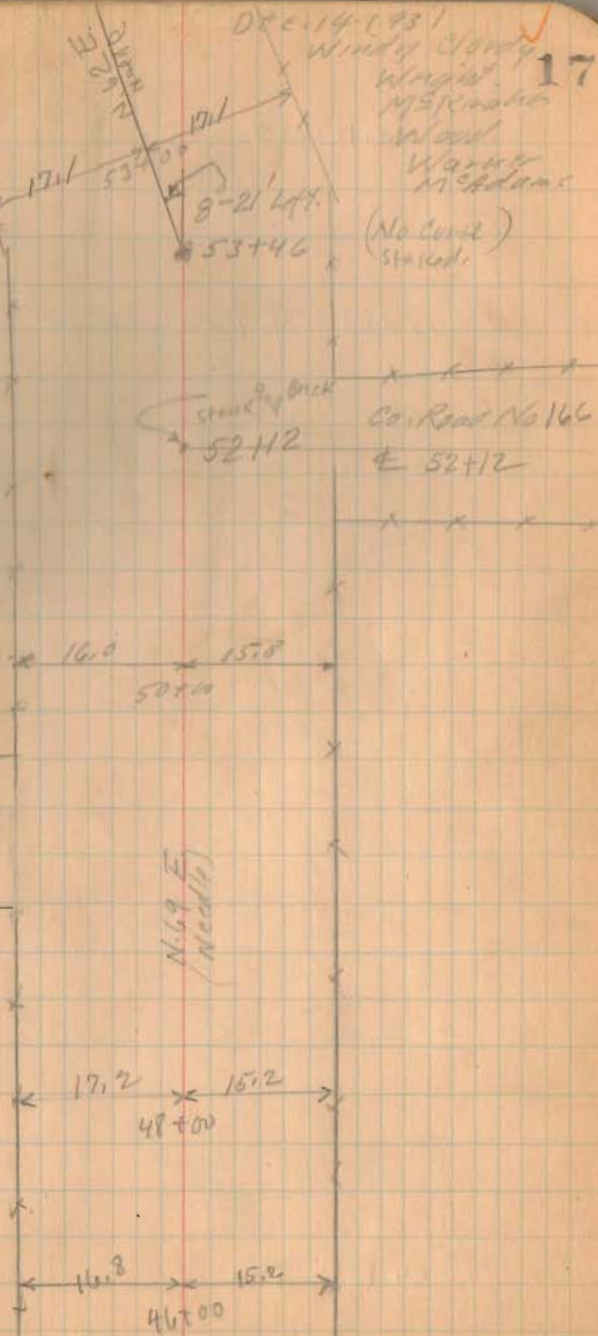


S.H. 607

50+00 Mon

1467  
INDEXED ON MAP

DR # 14-1931  
Windy Cloudy  
Winged  
MSPK  
Winged  
Winged  
MSPK  
17  
(No count)  
Started



Co. Road No. 166  
48+23

A. G. F.  
(Needle)

17.2 15.2  
48+00

16.8 15.2  
46+00



S.H. 607

65+00 Mon

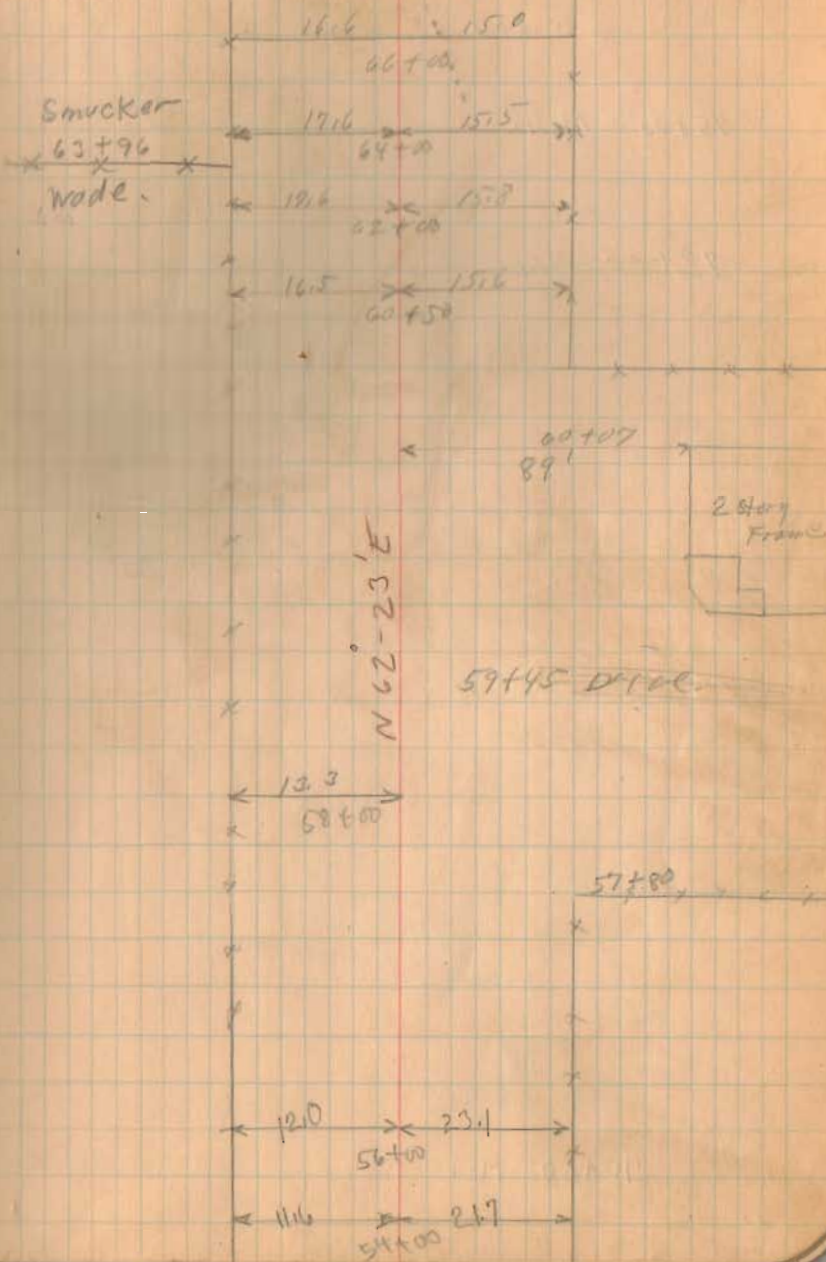
60+50 Mon

1467  
INDEXED ON MAP

56+00 Mon

12-14-31

18



C.H. 400

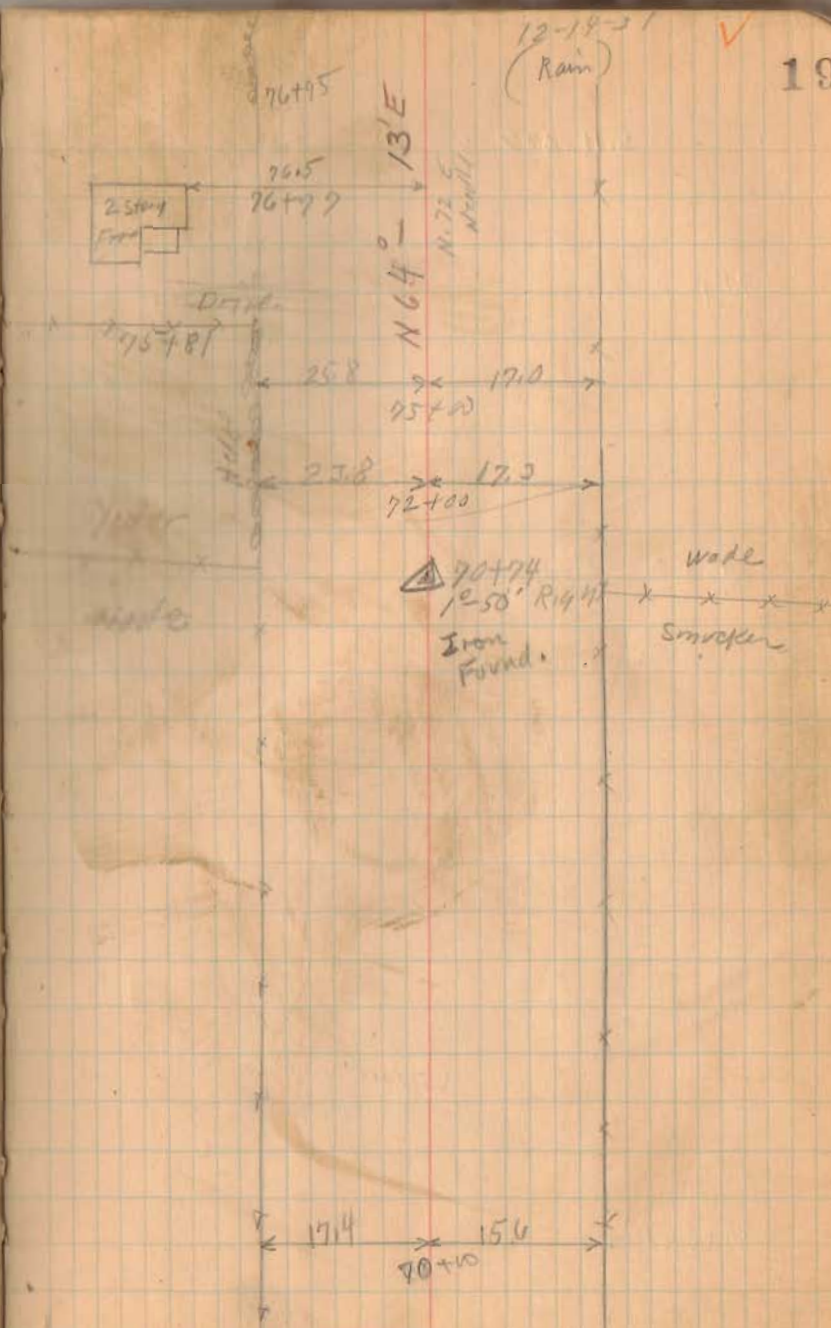
75+00 Mon.

72+00 Mon.

6467  
INDEXED ON MAP

70+00 Mon.

19





5.11.617

90+00 Mon.

85+00 Mon.

INDEXED ON MAP

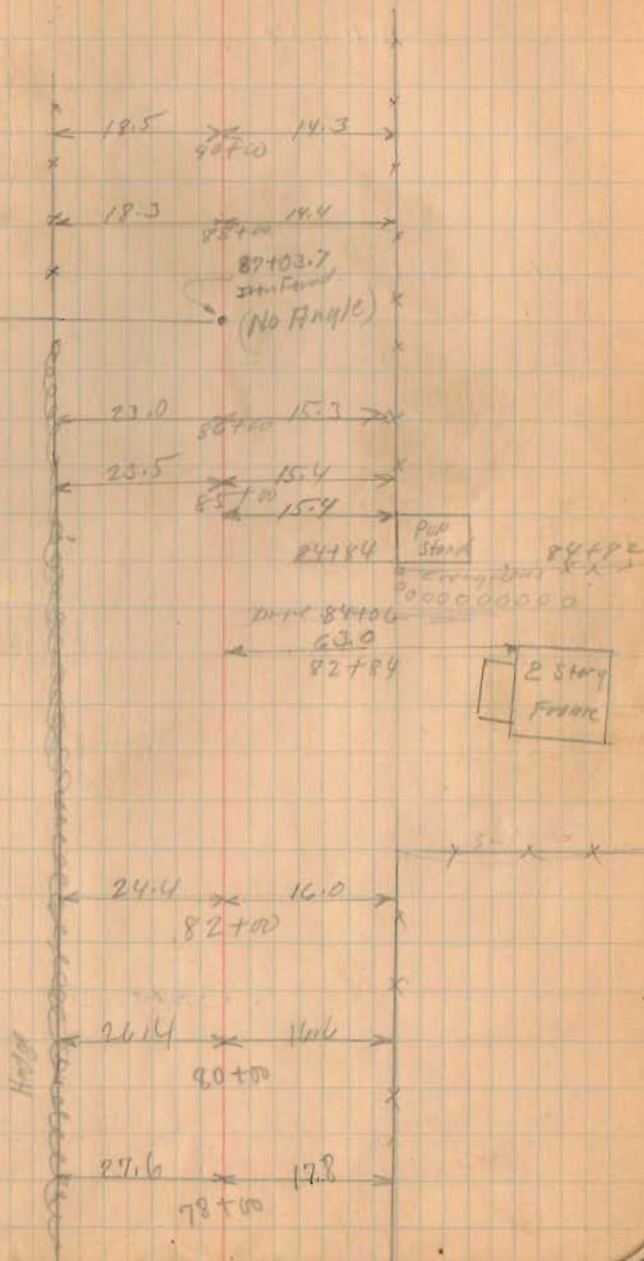
80+00 Mon.

12-11-31

20

Davis

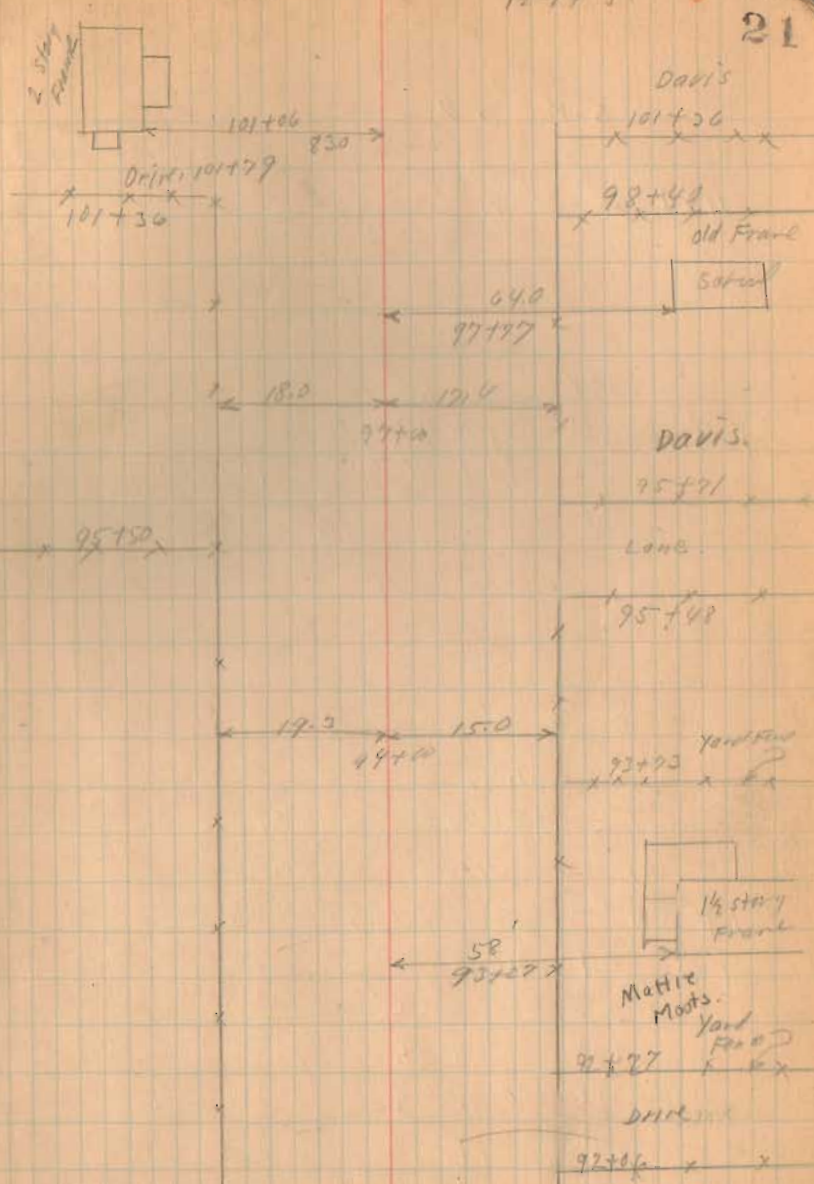
Yoder



S. H. 607

97+00 Mon.

1467  
INDEXED ON MAP







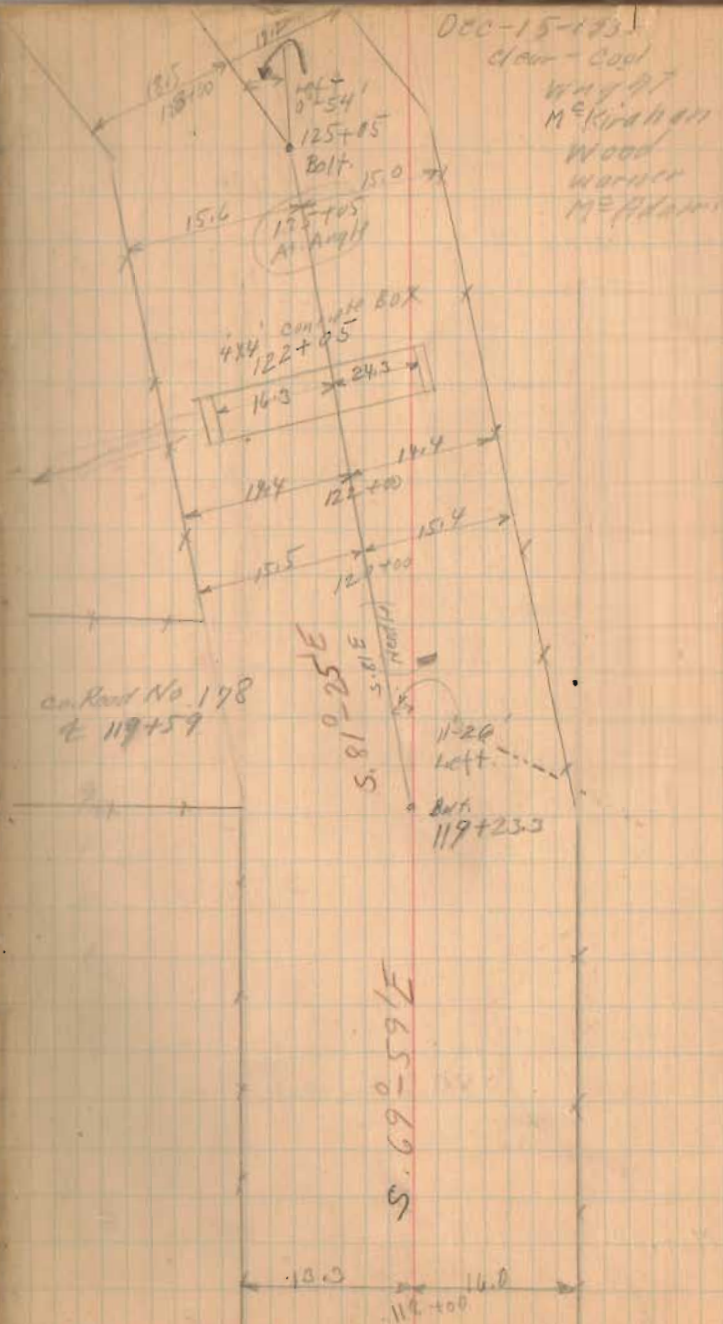
S.H. 607

125+05 Mon.  
(90° from Back site)

120+00 Mon.

1467  
INDEXED ON MAP

118 Mon.





S.H. 607

145+00 Mon.

140+00 Mon.

134+00 Mon.

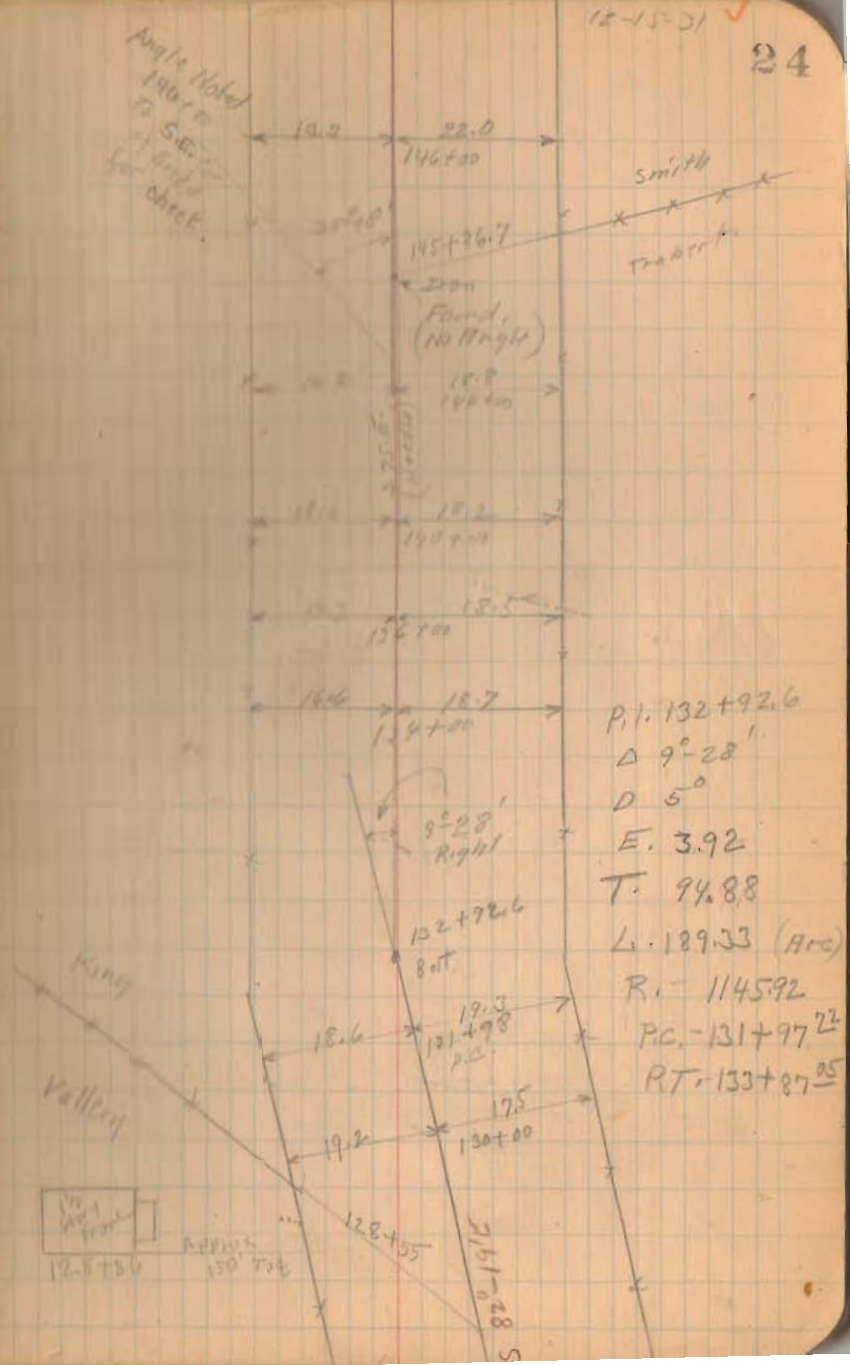
1467

INDEXED ON MAP

131+00 Mon. 131+00 Mon.

12-15-51

24



S.H. 607

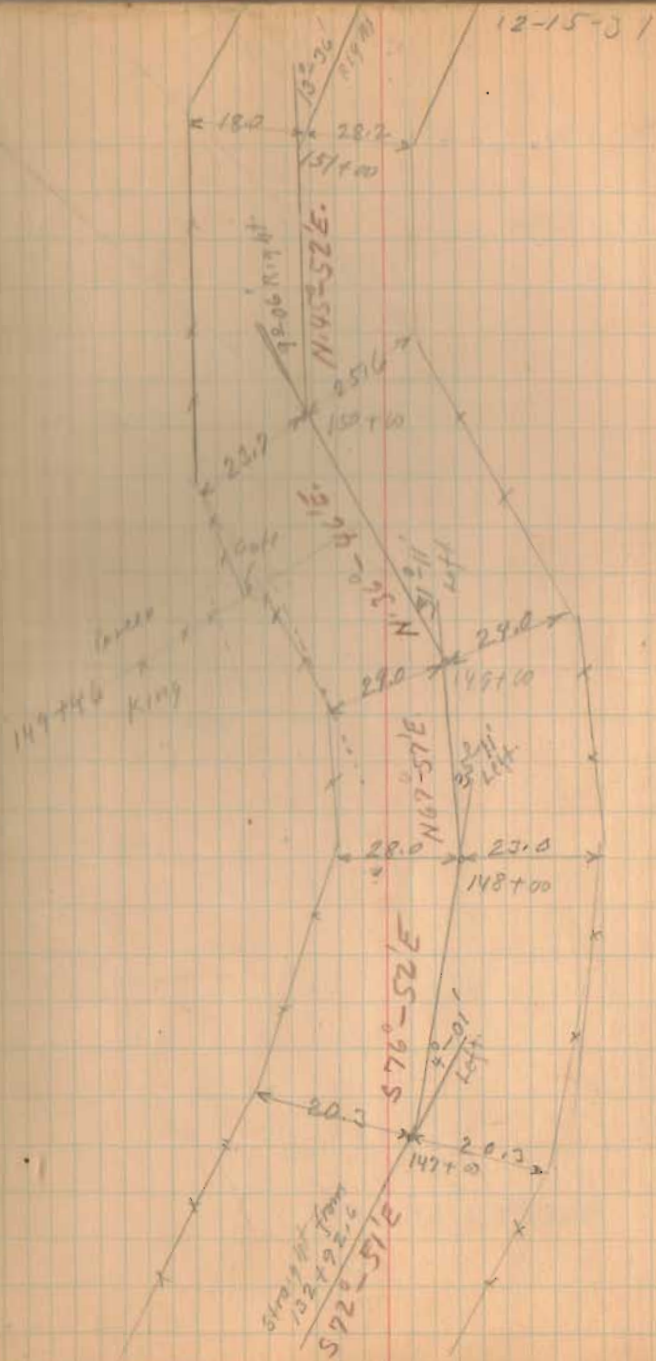
Note:-

(Snake Bend Run as shown.  
E of Road taken and angle  
Noted. No monuments from  
145+00 to 154+00)

1467

INDEXED ON MAP

25



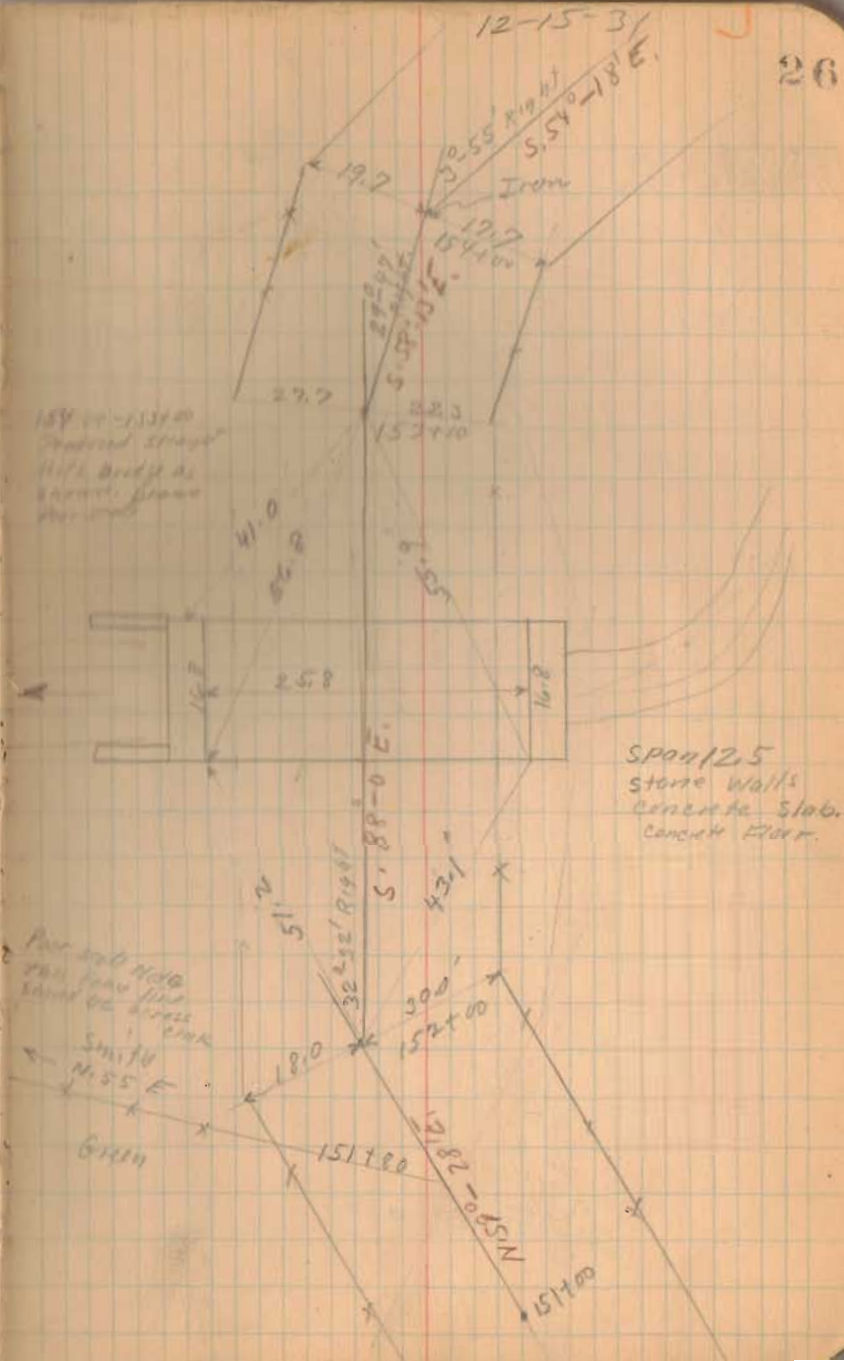


S. H. 607

154+00 Man.  
(90° from Fore sight.)

(1467)  
INDEXED ON MAP

26

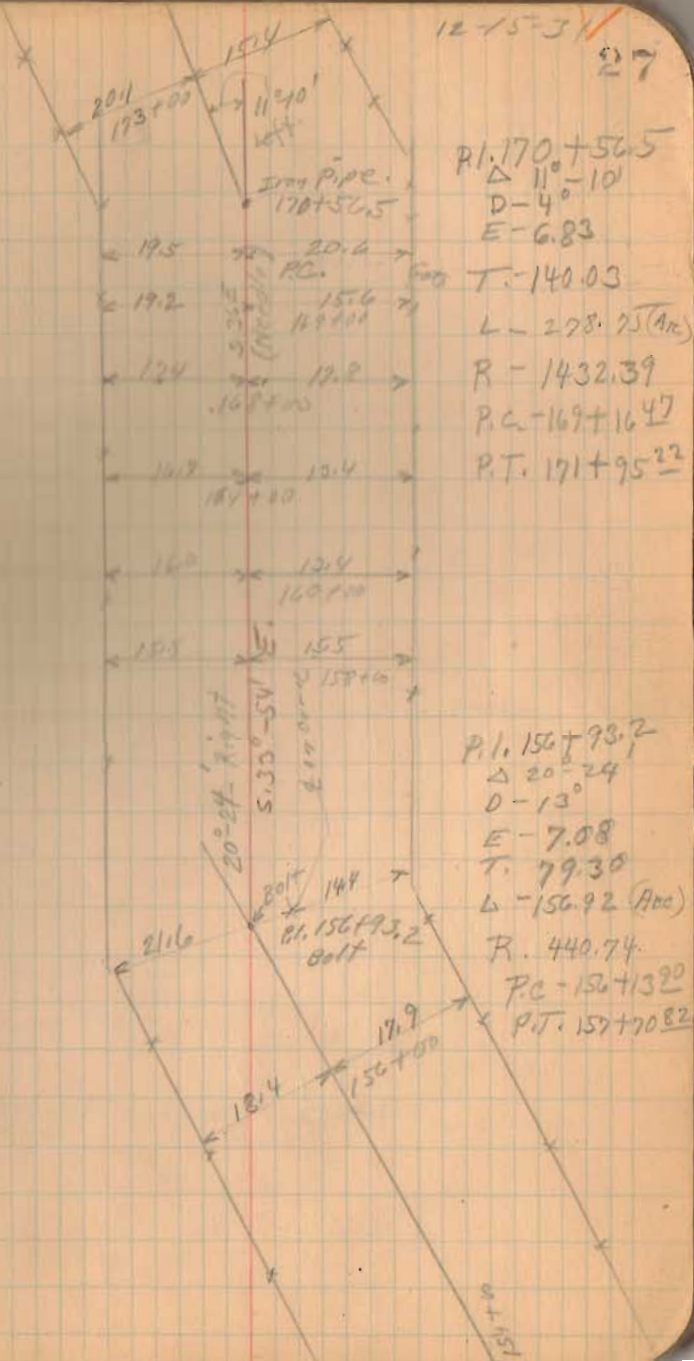


173+00 Mon. S.H. 607  
169+00 Mon.  
166+00 Mon.

161+00 Mon.

158+00 Mon.

(1467)  
INDEXED ON MAP





s. N. 607

179+09 RT. Mar,

179+01

1467  
INDEXED ON MAP

Pl. 177+71  
D-10-42  
O-6  
E-10.23  
T-140.16

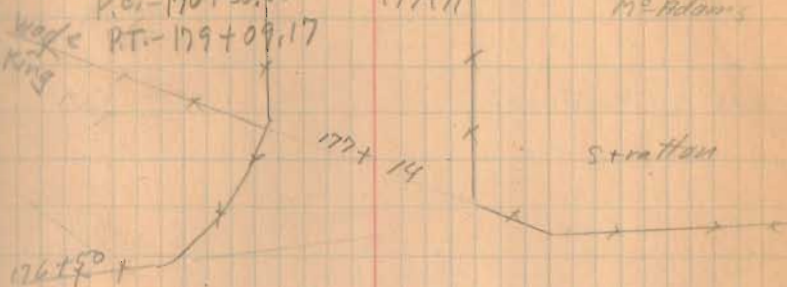
L-278.33 (A10)

R-954.93

P.C. 176+30.84

RT. 179+09.17

Wagon  
King



Dec. 16, 1931

clear fine winter day

Wright  
McKenna  
Wood  
Warner  
McAdams

25

16°42'

Left

177+71

177+14

Strattan

Co. Road No. 169

176+24.7

Co. Road No. 28

Iron  
7-31-35

54°04' E  
55.26

54°04' E



175+00.73

174+180

174+60

176+06

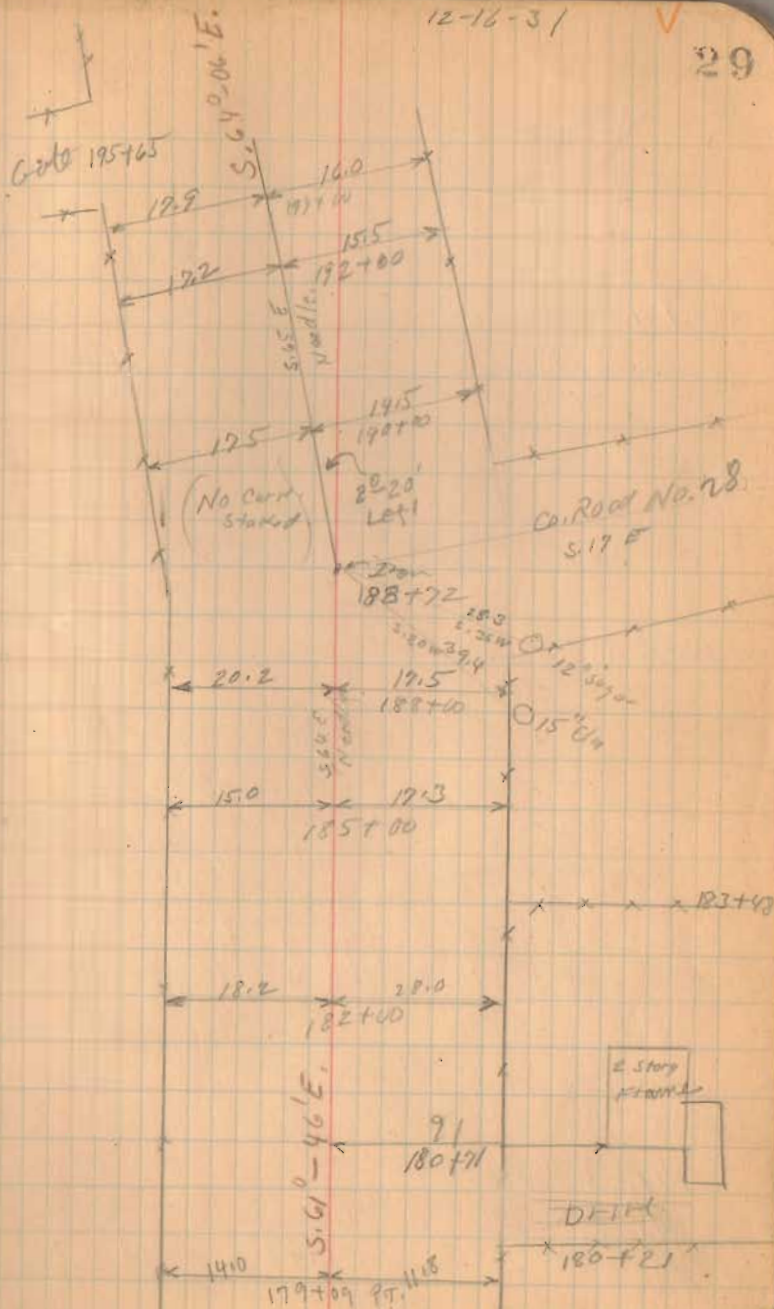
S.H. 607

190+00 Man.

187+00 Man.

185+00 Man.

1467  
INDEXED ON MAP





S.H. 607

211+00 Mon

210+00 Mon

206+00 Mon

202+00 Mon

197+00 Mon

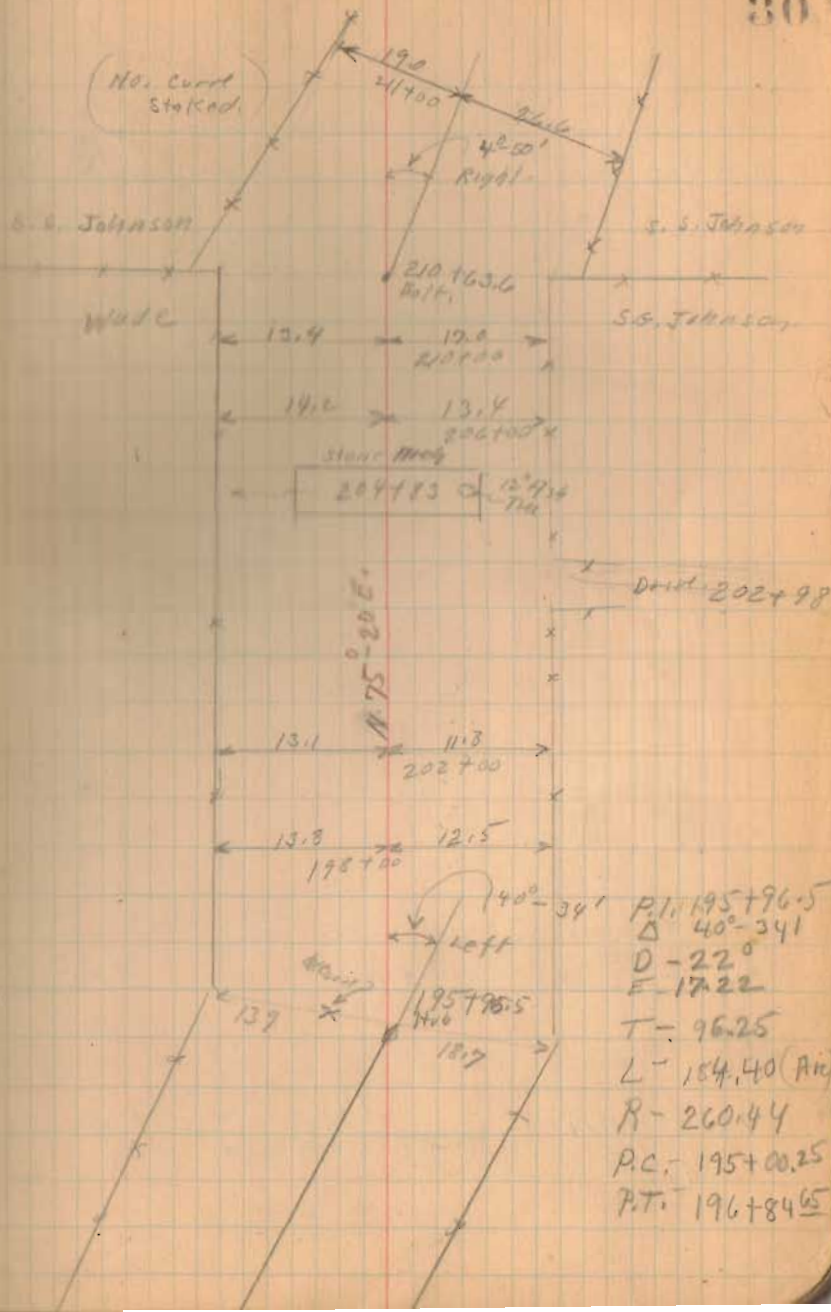
194+00 Mon

1467

INDEXED ON MAP

12-14-31

30







S.H. 607

245+00 Mon.

240+00 Mon.

234+00 Mon.

229+00 Mon.

1467  
INDEXED ON MAP

Dec-17-1931

Clear

32

P.L. 243+56.5

$\Delta - 30^\circ 36'$

T = 104.50

E = 14.04

L = 204.00 (Arc)

D = 15'

R = 38197

PC = 242+52

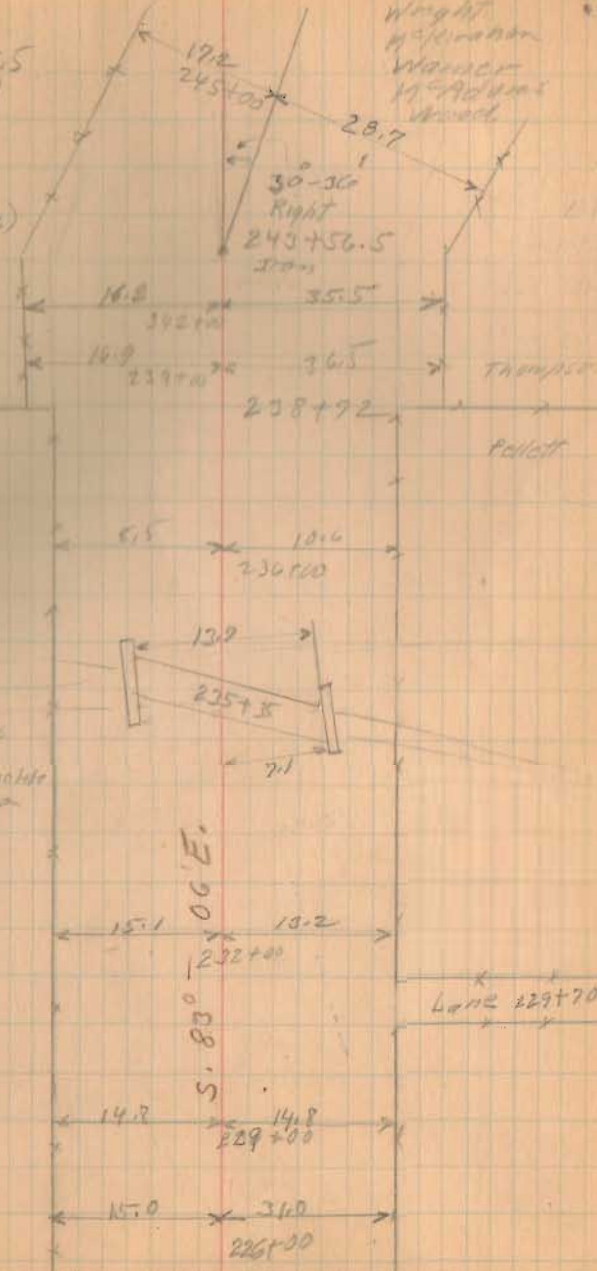
WT = 244+80

THOMPSON

Pellet

Wright  
M. J. W. W. W.  
W. W. W. W. W.  
W. W. W. W. W.

28.7  
30-36'  
Right  
243+56.5  
Iron



Stone Hbl.  
Found with  
concrete. Concrete  
Slab 13' x 20'  
on 2" x 2"

THOMPSON  
Pellet

Line = 229+70 ±

S.H. 607

256+00 Mon.

254+50 Mon.

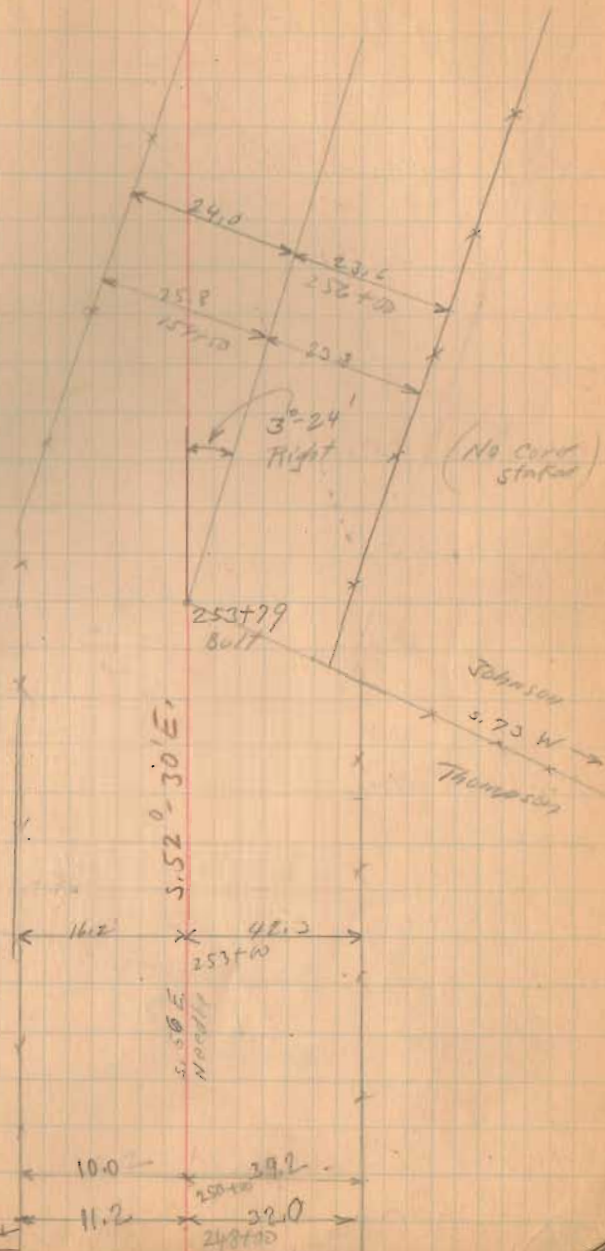
253+00 Mon.

1467  
INDEXED ON MAP

250+00 Mon.

12-17-31

33





S. H. 607

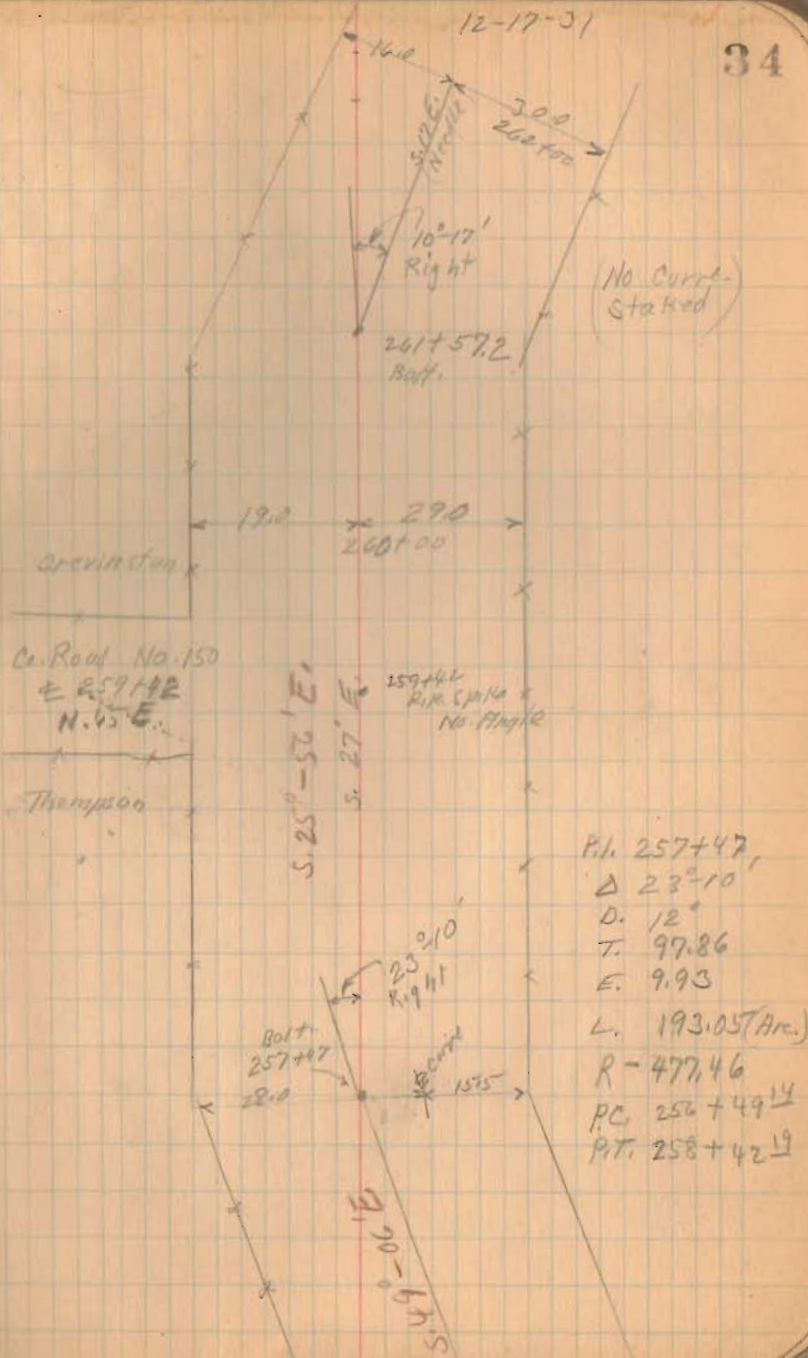
262+00 Mon

261+00 Mon.

259+00 Mon.

1467  
INDEXED ON MAP

34



S.H. 607

2917+00 Mon

286+00 Mon

281+00 Mon

276+00 Mon

271+00 Mon

267+00 Mon

1467  
INDEXED ON MAP

12-17-31

35

16.3 x 28.7 x  
290+00  
288+01 x  
Gardner  
287+65 x

Corrensia  
Notostima

2 story  
Frame

60.3  
286+75  
286+124  
Dist 286+16

15.6 x 27.8 x  
292+00

280+10

Muskat  
Pond

17.0 x 25.9 x  
278+10

278+25

18.2 x 23.3 x  
274+00

Notostima

271+62

Johnson

S. 15°-39'E.

Pond

280+00

282+00

17.6 x 23.9 x  
270+00

16.7 x 24.6 x  
266+00





S.H. 607

12-18-31

37

345+00 Man.

342+00 Man.

339+00 Man.

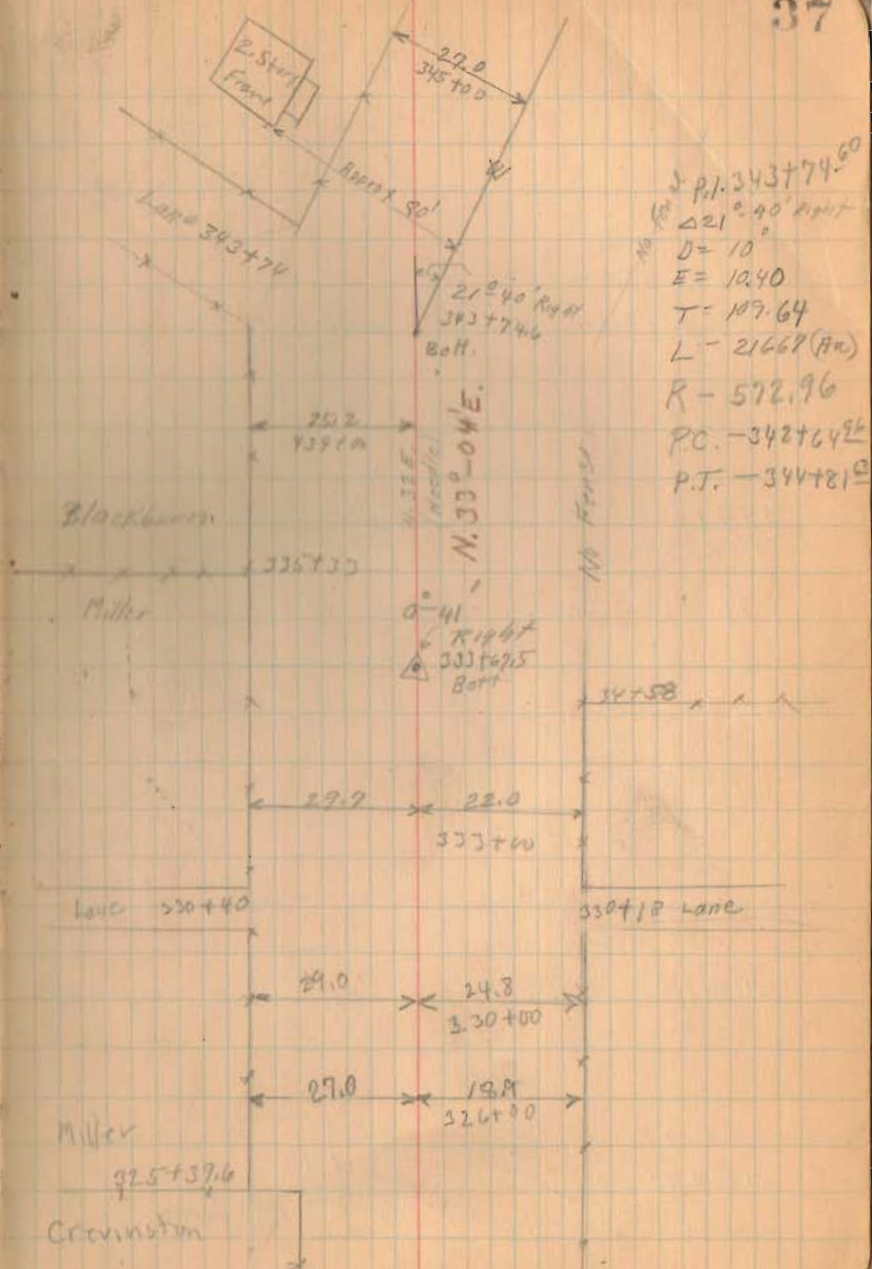
334+00 Man.

333+00 Man.

330+00 Man.

225+00 Man.

1867  
INDEXED ON MAP







S.H. 609

407+00 Man.

402+00 Man.

397+00 Man.

391+82.8 Man. ( $\frac{1}{2}$  of Angle)  
P.L. line.

387+00 Man.

382+00 Man.

INDEXED ON MAP  
1467

378+42.3 (90° from backsight)

374+00 Man.

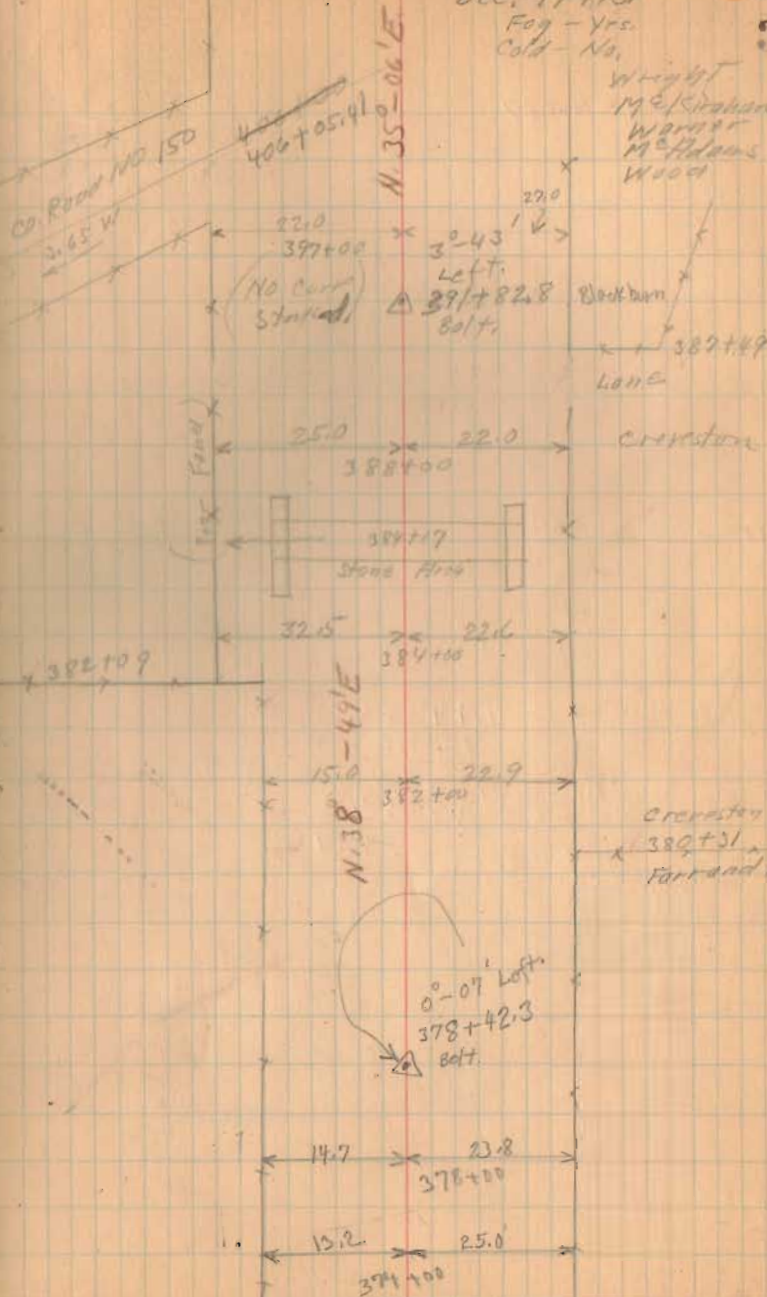
Dec. 19-1931

Fog - Yrs.

Cold - No.

39

Wright  
McGowan  
Warner  
McAdams  
Wood













S.H. 607

499+00 Mon.

472+00 Mon

488+00 Mon

484+00 Mon

480+00 Mon

1467  
INDEXED ON MAP

12-21-31

43

P.I. 498+54  
 Δ - 29°-52'  
 D - 20'  
 E - 10.06  
 T - 76.58  
 L - 149.67 (Arc)  
 R - 286.48  
 P.C. 497+77.42  
 P.T. 499+27.09

Dosny

Gibson

498+10

N. 25°-16' E.

292.50'  
Left.  
498+54  
Balt.

E 498+00  
Co. Road No 158  
5.5' E.

N. 55°-12' E.  
N. 55° E.  
N. 55° E.

924'  
Right

P.I. 486+01.7  
 Δ - 9°-46'  
 D - 4'  
 E - 5.22  
 T - 122.38  
 L - 244.17 (Arc)  
 R - 1432.39  
 P.C. 484+79.22  
 P.T. 487+23.12

Balt.

N. 45°-26' E.

481+24

2 1/2 mi  
Fishing

480+52  
Approx 100

482+56  
D.M.C.

Very Poor Flood

17.1

490+80  
490+00

499+10



S.H. 607

511+00 Man.

508+00 Man.

504+00 Man.

500+00 Man.

1467  
INDEXED ON MAP

PI. 512+72.7  
Δ - 28° 16'  
D - 15'  
E - 11.92  
T - 96.18  
L - 188.44 (Arc.)  
R - 381.97  
PC 511+97.52  
PI. 513+85.96

Dec-22-1931

Rain A.M.

Wright

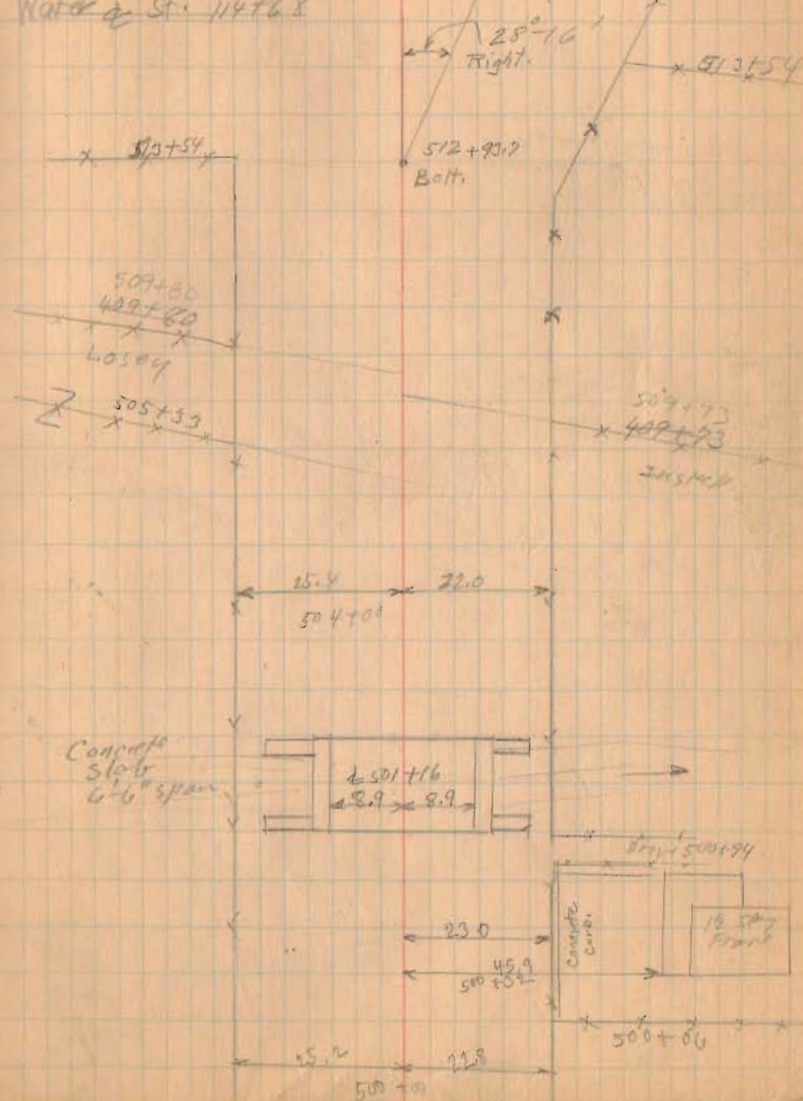
M. Expiration

Warren

M. Phillips

Wood.

Water of St. 114+68



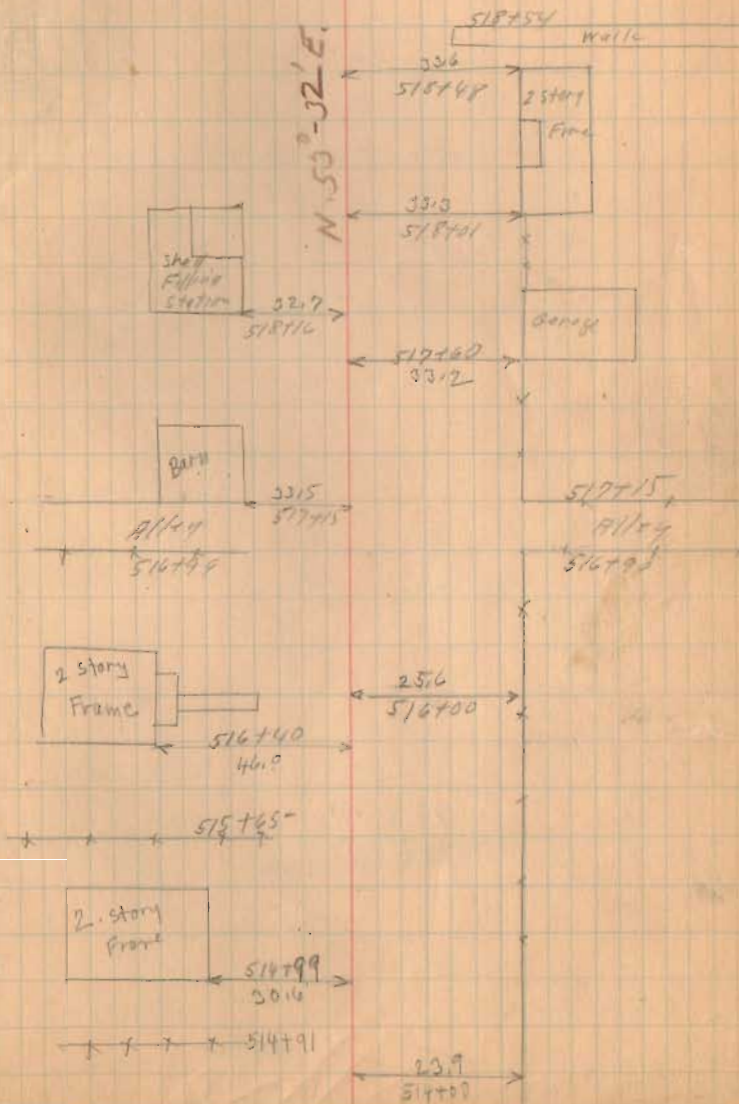
Sitt. 607

12-22-31

45

518782

Ca. Road 153  
Columbus St.



1467  
INDEXED ON MAP



S.H. 607

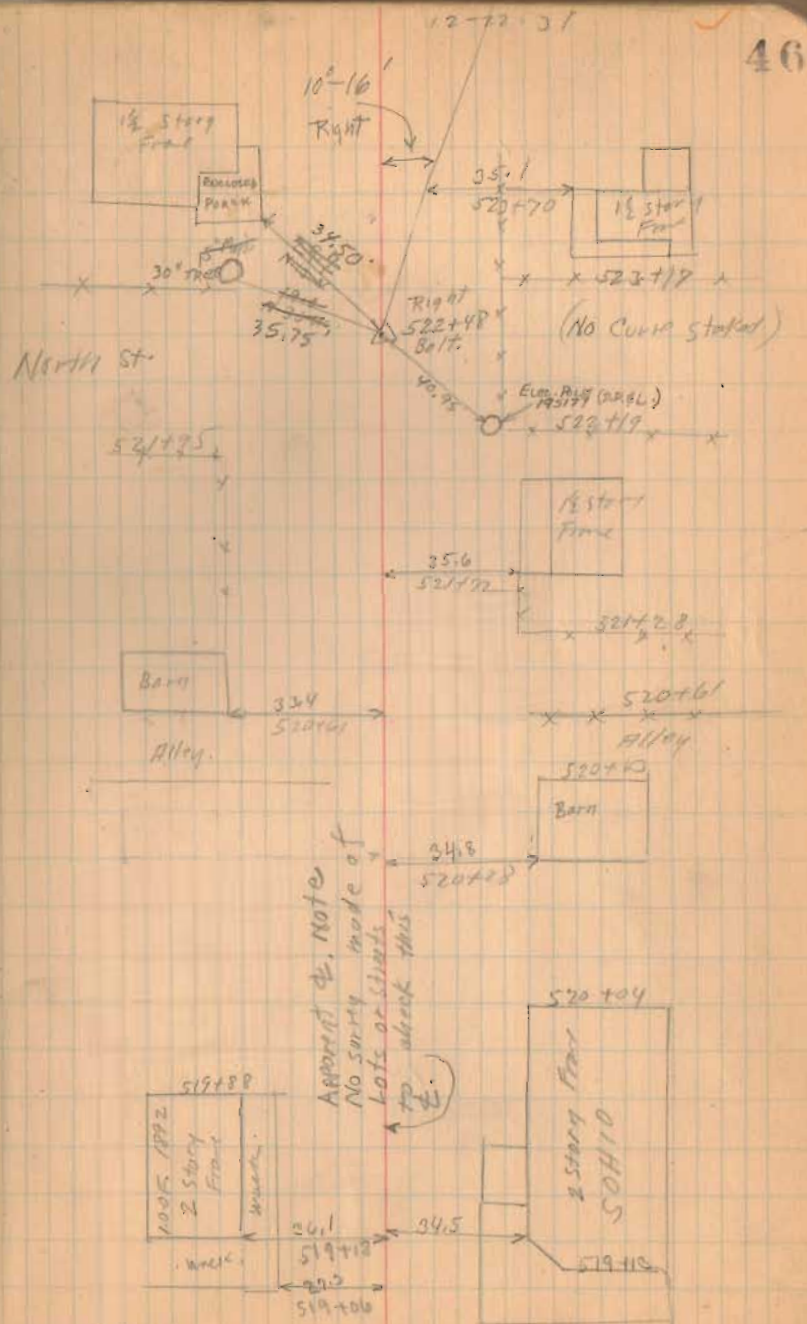
BOLT Fd. (12/5/70)

Sta. 522+48

New WITNESSES

DEG.

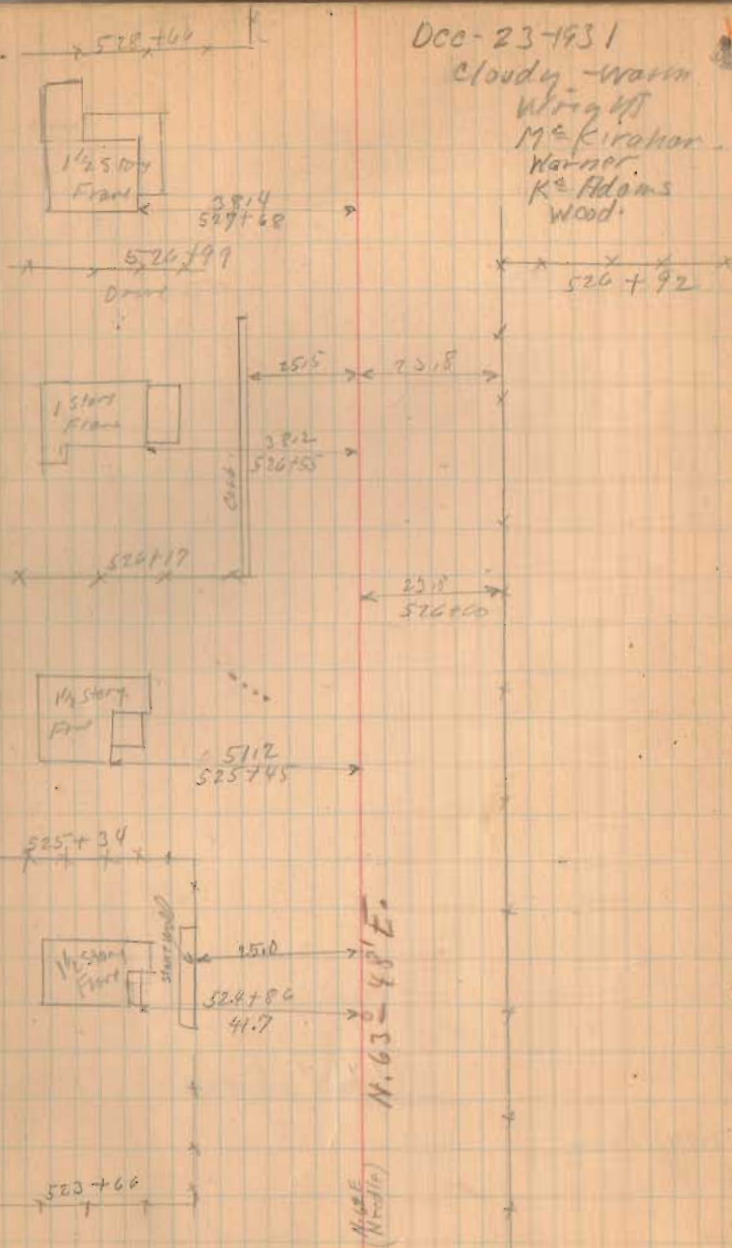
1467  
INDEXED ON MAP



S.H. 607,

526+00 Man.

1467  
INDEXED ON MAP





SH607

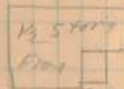
535+00 Mon.

(1467)  
INDEXED ON MAP

529+00 Mon.

12-23-31

534114



Richard's

532+59

531132



concrete wall  
530+46

stone Arch

530+18

24.4  
530+00

530+03

24.6

22.3  
529+00





S.H. 607

572+00

569+00 Man.

561+00 Man.

557+00 Man.

554+00 Man.

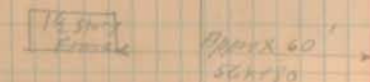
1467  
INDEXED ON MAP

12-23-31

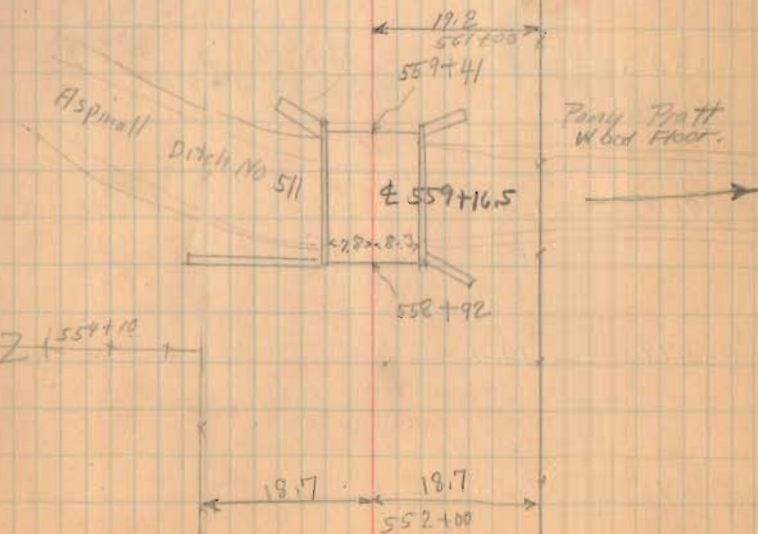
50



PL 570+68.5  
 Δ - 33° 0'  
 D - 20'  
 E - 12.30  
 T - 84.86  
 (Arc) L - 165.00  
 R - 286.48  
 PC - 569+83.49  
 PT - 571+48.69



Patrick  
 563+10  
 Shirk



S.H. 607

Total Length 58,062.5 Feet  
" " 10.9968 Miles  
17½ feet less than 11 Miles.

580+00

(1467)  
INDEXED ON MAP

576+00 Mon.

574+00 Mon.

12-20-31

51

