

Job No. 138

Right of Way Marker  
State of Ohio

Survey for Joe Corbett

S30 T5 R13

Union Twp Logan Co, Ohio

# Liberty

See Book 16 Page 24 12/10/07

1/2" N of M

13 feet on

CAHobbes  
Get Carriage  
Postman  
Rory

7/10/07

Sta. 9.0

131+00

0.45 N

Sta. 128+538

30' 40"

30' 40"

Sta. 125+00  
Apple 2 5'-00"  
Cotton 4'-00"

Sta. 124+80

Sta. 130+00

Sta. 116+40

Iron bore  
(set)

SH 118+00

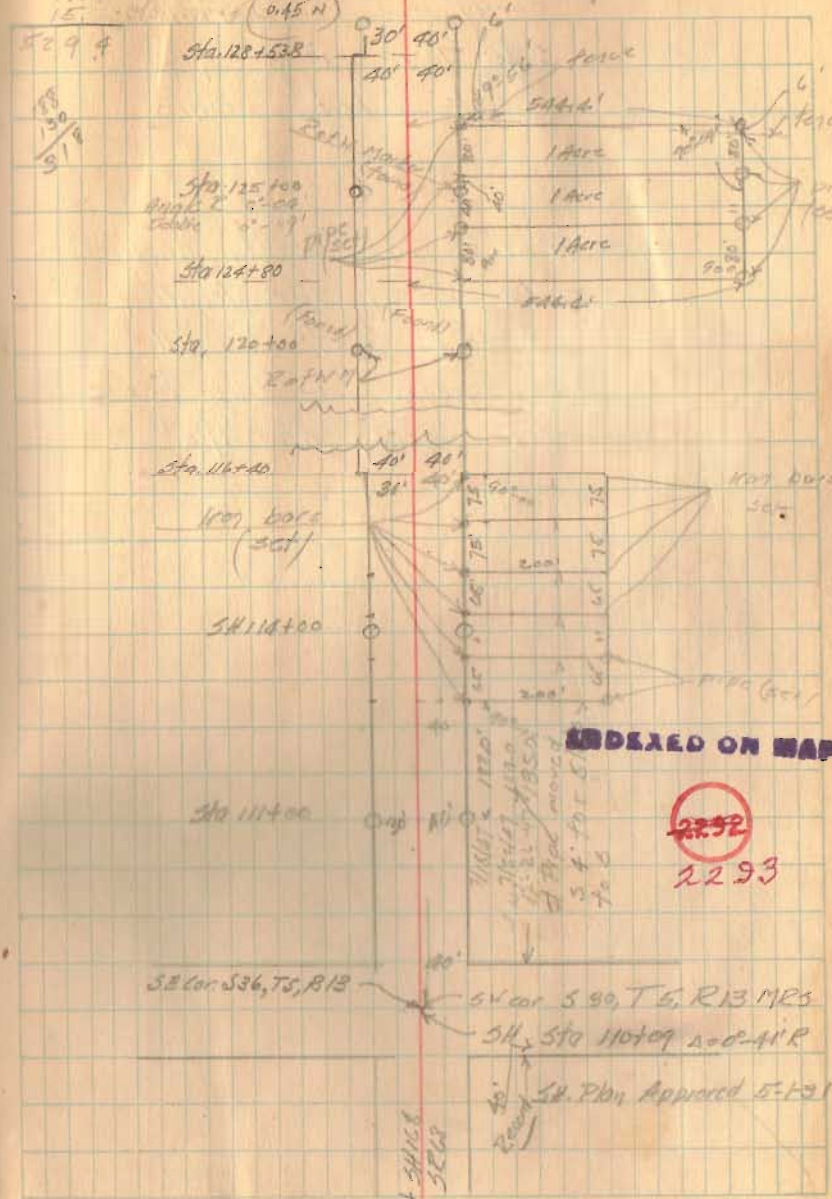
Sta 111+00

S36 Cor. S36, T5, R13

S4 cor S 90, T 6, R 13 MRS

SH Sta 110+09 100'-AIR

SH Plan Approved 5-1-01



INDEXED ON MAP

~~2252~~  
2293

SH  
SEW