



Lee Surveying and Mapping Co.



Farm Surveys • Lot Surveys • Topography • Subdivisions • Construction Layout

143 EAST COLUMBUS AVENUE
BELLEFONTAINE, OHIO 43311

(513) 593-7335

JEFFREY I. LEE, P.S.

OELKER 1.022 ACRE

Lying in Section 35, Town 5, Range 13, Liberty Township, Logan County, Ohio.

Being out of the Joe A. Oelker original 126.71 acres as deeded and described in Official Record 264, Page 963 of the Logan County Records of Deeds and being more particularly described as follows:

Beginning at a railroad spike found at the intersection of center-lines of State Route 508 and Township Road 188.

THENCE, with the center-line of Township Road 188 (60 feet wide), N 4°-08'-00" E, a distance of 1395.13 feet to a 7/8 inch iron pipe found at the southwest corner of the said 126.71 acre tract and the TRUE POINT OF BEGINNING.

THENCE, with the center-line of Township Road 188, N 4°-08'-00" E, a distance of 150.00 feet to a railroad spike set.

THENCE, S 84°-01'-27" E, a distance of 296.83 feet to a 5/8 inch iron rod set.

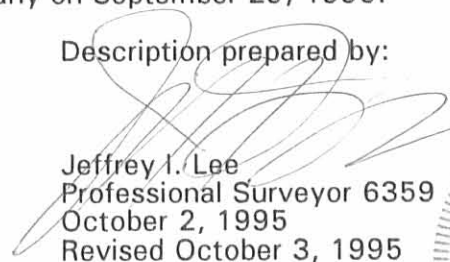
THENCE, S 4°-08'-00" W, a distance of 150.00 feet to a 5/8 inch iron rod set.

THENCE, with the north line of the Karl Z. Smith 35.16 acre tract (Vol. 356, Pg. 613), N 84°-01'-27" W, a distance of 296.83 feet to the point of beginning.

Containing 1.022 acres of which 0.103 acre is within the highway right-of-way.

The basis for bearings is based upon the center-line of Township Road 188 being N 4°-08'-00" E, and all other bearings are from angles and distances measured in a field survey by Lee Surveying and Mapping Company on September 29, 1995.

Description prepared by:


Jeffrey I. Lee
Professional Surveyor 6359
October 2, 1995
Revised October 3, 1995



L 2330

ORIGINAL STAMP IN GREEN

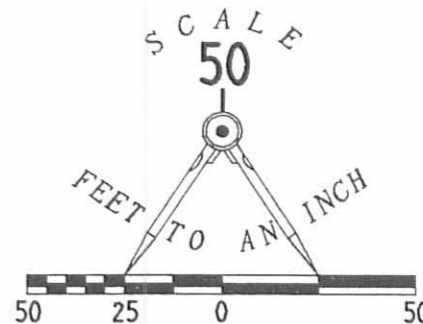
INDEXED ON MAP
3571 1D

REC'D 10-3-95 SMY OK

REFERENCES

LOGAN COUNTY ENGINEER'S FILES:
FIELD BOOK 519. PAGES 60-63
R-1387
R-1110

JOE A. OELKER
ORIG. 126.71 AC
O.R. 264. PG. 963



LEGEND

- ⊗ RAILROAD SPIKE FOUND
- ⊕ RAILROAD SPIKE SET
- 5/8" IRON ROD SET
- 7/8" IRON PIPE FOUND
- ⦿ 1" I. ROD FOUND
- X- FENCE ROW

TOWNSHIP ROAD 188 (60')

N 04° 08' 00" E (BASIS FOR BEARINGS)
150.00'

1.022 ACRES
OF WHICH 0.103 ACRE IS WITHIN
HIGHWAY RIGHT-OF-WAY

JOE A. OELKER
ORIG. 126.71 AC
O.R. 264. PG. 963

KARL Z. SMITH
35.16 ACRES
VOL. 356. PG. 613

SURVEY OF 1.022 ACRES OUT
OF THE JOE A. OELKER
ORIGINAL 126.71 ACRE TRACT
OFFICIAL RECORD 264. PAGE 963
SECTION 35. TOWN 5. RANGE 13
LIBERTY TOWNSHIP
LOGAN COUNTY, OHIO



ORIGINAL STAMP IN GREEN

SURVEYED BY:

Jeffrey I. Lee
JEFFREY I. LEE
PROFESSIONAL SURVEYOR 6359
SEPTEMBER 29, 1995

COPYRIGHT 1995 BY:

LEE SURVEYING & MAPPING CO.
143 East Columbus Avenue
BELLEFONTAINE, OHIO 43311
(513) 593-7335

D 266 OELKER

L-2330-4

INDEXED ON MAP
3571 1P

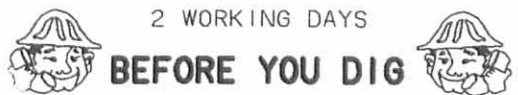
2 WORKING DAYS

BEFORE YOU DIG

CALL TOLL FREE 800-362-2764

OHIO UTILITIES PROTECTION SERVICE

REC'D 10-3-95 SMY OK ✓



REC 9-18-01 SMY OK

Lee Surveying and Mapping Co., Inc.

Land Surveys • Topography • Subdivisions • Construction Layout

117 N. Madriver St.
Bellefontaine OH 43311



Phone: (937) 593-7335
Fax: (937) 593-7444

VERBSKY 0.065 ACRES

Lying in Section 35, Town 5, Range 13, Liberty Township, Logan County, Ohio.

Being out of the Mark J. Verbsky 1.498 acre tract as deeded and described in Official Record 474, Page 98 of the Logan County Records of Deeds and being more particularly described as follows:

Beginning at a 5/8 inch iron rod set at the northwest corner of Lot 21 of Crestwood Allotment (Plat Cabinet A, Slide 319).

THENCE, with the north lines of Crestwood Allotment and the Larry Alan Harris 0.57 acre tract (O.R. 57, Pg. 871), S 85°-44'-58" E, a distance of 680.70 feet to a point on the center-line of U.S. Route 68 (varied width), passing a 5/8 inch iron rod set at 650.70 feet.

THENCE, with the center-line of U.S. Route 68, N 4°-34'-27" E, a distance of 442.62 feet to a point.

THENCE, with the south line of the said 1.498 acre tract and with a line of the William A. Verbsky original 70.026 acre tract (O.R. 474, Pg. 118), S 89°-46'-55" W, a distance of 410.16 feet to a 5/8 inch iron rod set at the TRUE POINT OF BEGINNING, passing a 5/8 inch iron rod set at 30.11 feet.

THENCE, with the south line of the said 1.498 acre tract and a line of the said 70.026 acre tract, S 89°-46'-55" W, a distance of 25.00 feet to a 5/8 inch iron rod set.

THENCE, with the west line of the said 1.498 acre tract and a line of the said 70.026 acre tract, N 4°-34'-27" E, a distance of 150.53 feet to a 5/8 inch iron rod set.

THENCE, with the north line of the said 1.498 acre tract and a line of the said 70.026 acre tract, N 89°-46'-55" E, a distance of 13.00 feet to a 5/8 inch iron rod set.

THENCE, S 0°-00'-06" W, a distance of 150.00 feet to the point of beginning.

Containing 0.065 acres.

The basis for bearings is the center-line of U.S. Route 68 being S 4°-34'-27" W, and all other bearings are from angles and distances measured in a field survey by Lee Surveying and Mapping Co., Inc. on November 2, 2000.

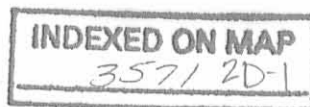
Description prepared by:



ORIGINAL STAMP IN GREEN

Jeffrey I. Lee
Jeffrey I. Lee
Professional Surveyor 6359
September 9, 2001

L-3027



7-18-01 SMY ON
Lee Surveying and Mapping Co., Inc.

Land Surveys • Topography • Subdivisions • Construction Layout

117 N. Madriver St.
Bellefontaine OH 43311



Phone: (937) 593-7335
Fax: (937) 593-7444

**VERBSKY
1.433 ACRES**

Lying in Section 35, Town 5, Range 13, Liberty Township, Logan County, Ohio.

Being out of the Mark J. Verbsky 1.498 acre tract as deeded and described in Official Record 474, Page 98 of the Logan County Records of Deeds and being more particularly described as follows:

Beginning at a 5/8 inch iron rod set at the northwest corner of Lot 21 of Crestwood Allotment (Plat Cabinet A, Slide 319).

THENCE, with the north lines of Crestwood Allotment and the Larry Alan Harris 0.57 acre tract (O.R. 57, Pg. 871), S 85°-44'-58" E, a distance of 680.70 feet to a point on the center-line of U.S. Route 68 (varied width), passing a 5/8 inch iron rod set at 650.70 feet.

THENCE, with the center-line of U.S. Route 68, N 4°-34'-27" E, a distance of 442.62 feet to a point at the TRUE POINT OF BEGINNING.

THENCE, with the south line of the said 1.498 acre tract and with a line of the William A. Verbsky 70.026 acre tract (O.R. 474, Pg. 118), S 89°-46'-55" W, a distance of 410.16 feet to a 5/8 inch iron rod set, passing a 5/8 inch iron rod set at 30.11 feet.

THENCE, N 0°-00'-06" E, a distance of 150.00 feet to a 5/8 inch iron rod set.

THENCE, with the north line of the said 1.498 acre tract and a line of the said 70.026 acre tract, N 89°-46'-55" E, a distance of 422.16 feet to a point on the center-line of U.S. Route 68, passing a 5/8 inch iron rod set at 392.05 feet.

THENCE, with the center-line of U.S. Route 68, S 4°-34'-27" W, a distance of 150.53 feet to the place of beginning.

Containing 1.433 acres of which 0.104 acre is within the highway right-of-way.

The basis for bearings is the center-line of U.S. Route 68 being S 4°-34'-27" W, and all other bearings are from angles and distances measured in a field survey by Lee Surveying and Mapping Co., Inc. on November 2, 2000.

Description prepared by:

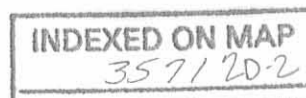


ORIGINAL STAMP IN GREEN

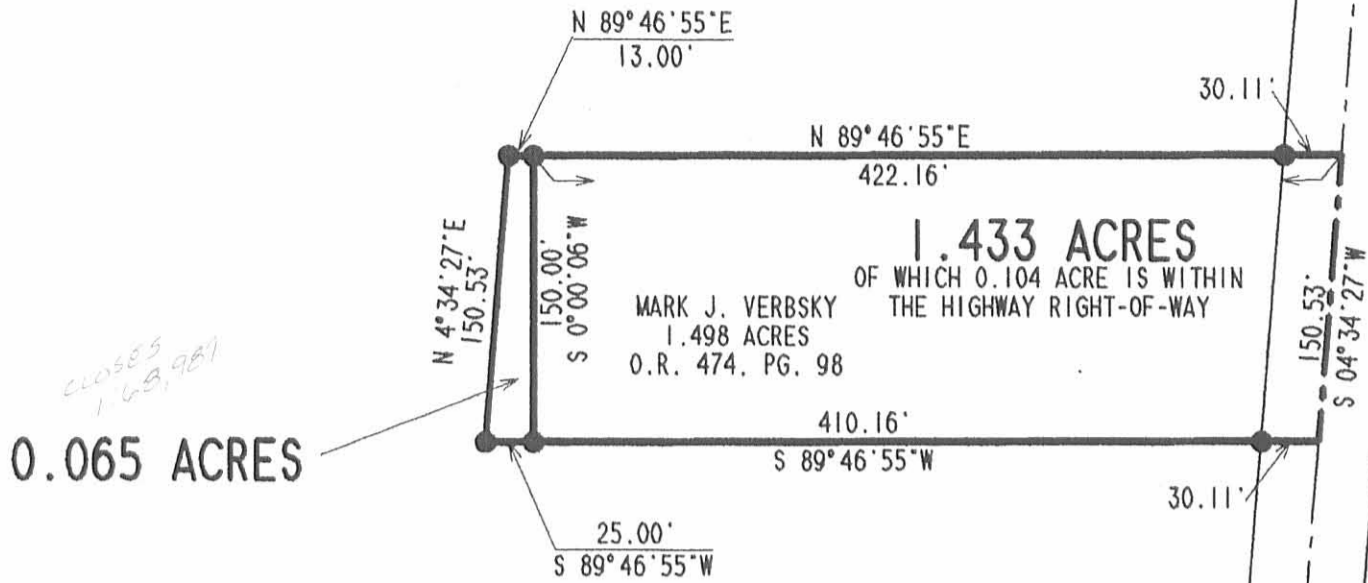
A handwritten signature in black ink, appearing to read 'Jeffrey I. Lee'.

Jeffrey I. Lee
Professional Surveyor 6359
November 8, 2000
Revised September 9, 2001

L-3027



2009-18-01 SMU OK

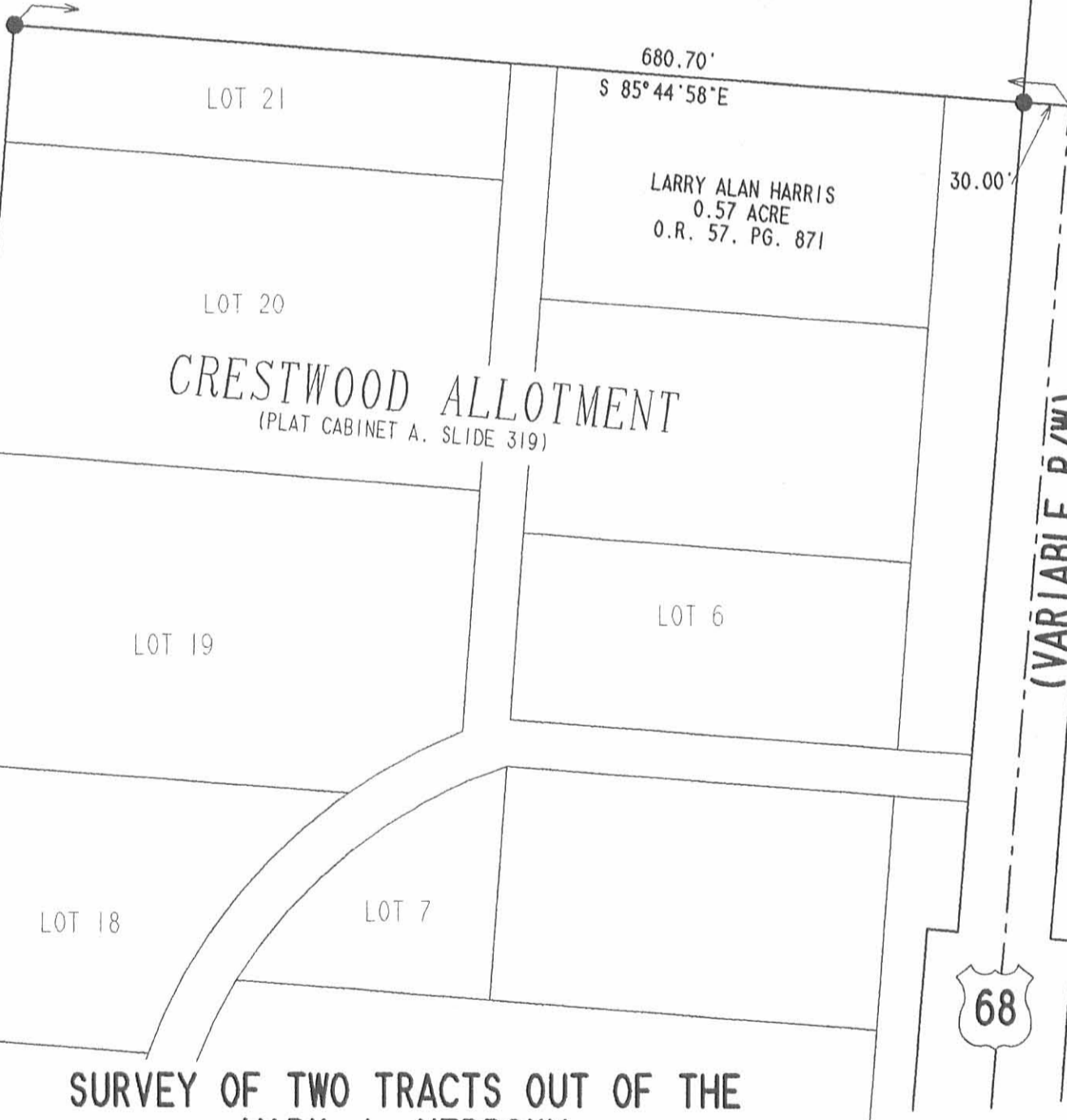


0.065 ACRES

1.433 ACRES
OF WHICH 0.104 ACRE IS WITHIN
THE HIGHWAY RIGHT-OF-WAY

MARK J. VERBSKY
1.498 ACRES
O.R. 474, PG. 98

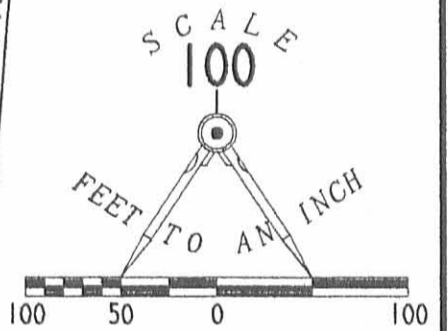
WILLIAM A. VERBSKY
AND JUDITH K. VERBSKY
ORIG. 70.026 ACRES
O.R. 474, PG. 118



CRESTWOOD ALLOTMENT
(PLAT CABINET A, SLIDE 319)

LARRY ALAN HARRIS
0.57 ACRE
O.R. 57, PG. 871

(VARIABLE R/W)



**SURVEY OF TWO TRACTS OUT OF THE
MARK J. VERBSKY
1.498 ACRE TRACT
OFFICIAL RECORD 474, PAGE 98
SECTION 35, TOWN 5, RANGE 13
LIBERTY TOWNSHIP
LOGAN COUNTY, OHIO**



SURVEYED BY:
Jeffrey I. Lee
JEFFREY I. LEE
PROFESSIONAL SURVEYOR 6359
NOVEMBER 2, 2000
REVISED SEPTEMBER 5, 2001

COPYRIGHT 2000 BY:
LEE SURVEYING & MAPPING CO., INC.
117 North Madriver Street
BELLEFONTAINE, OHIO 43311
(937) 593-7335

2 WORKING DAYS
BEFORE YOU DIG
CALL TOLL FREE **800-362-2764**
OHIO UTILITIES PROTECTION SERVICE.

INDEXED ON MAP ORIGINAL STAMP IN GREEN
35712P

D-390 VERBSKY3 L-3027-3

RECEIVED 1-24-01 04:02

1/8

Lee Surveying and Mapping Co., Inc.

Land Surveys • Topography • Subdivisions • Construction Layout

117 N. Madriver St.
Bellefontaine OH 43311



Phone: (937) 593-7335
Fax: (937) 593-7444

VERBSKY 2.215 ACRES

Lying in Section 35, Town 5, Range 13, Liberty Township, Logan County, Ohio.

Being out of the William A. Verbsky 70.026 acre tract as deeded and described in Official Record 474, Page 118 of the Logan County Records of Deeds and being more particularly described as follows:

Beginning at a 5/8 inch iron rod set at the northwest corner of Lot 21 of Crestwood Allotment (Plat Cabinet A, Slide 319).

THENCE, with the north line of Lot 21, S 85°-44'-58" E, a distance of 247.05 feet to a 5/8 inch iron rod set at the TRUE POINT OF BEGINNING.

THENCE, N 4°-34'-27" E, a distance of 223.76 feet to a 5/8 inch iron rod set.

THENCE, S 85°-25'-33" E, a distance of 433.64 feet to a point on the center-line of U.S. Route 68, passing a 5/8 inch iron rod set at 403.64 feet.


THENCE, with the center-line of U.S. Route 68, S 4°-34'-27" W, a distance of 221.31 feet to a point.

THENCE, with the north line of the Larry Alan Harris 0.57 acre tract (O.R. 57, Pg. 871) and the north line of Crestwood Allotment, N 85°-44'-58" W, a distance of 433.65 feet to the place of beginning, passing a 5/8 inch iron rod set at 31.50 feet.

Containing 2.215 acres of which 0.152 acre is within the highway right-of-way.

The basis for bearings is the center-line of U.S. Route 68 being S 4°-34'-27" W, and all other bearings are from angles and distances measured in a field survey by Lee Surveying and Mapping Co., Inc. on November 2, 2000.

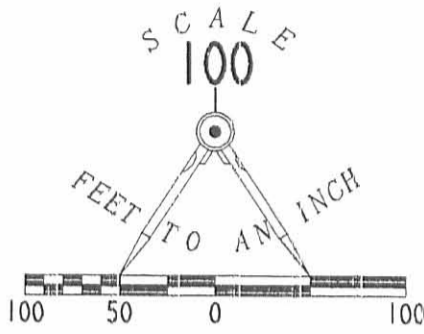
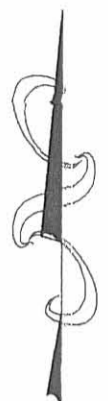
Description prepared by:


Jeffrey I. Lee
Professional Surveyor 6359
January 4, 2001

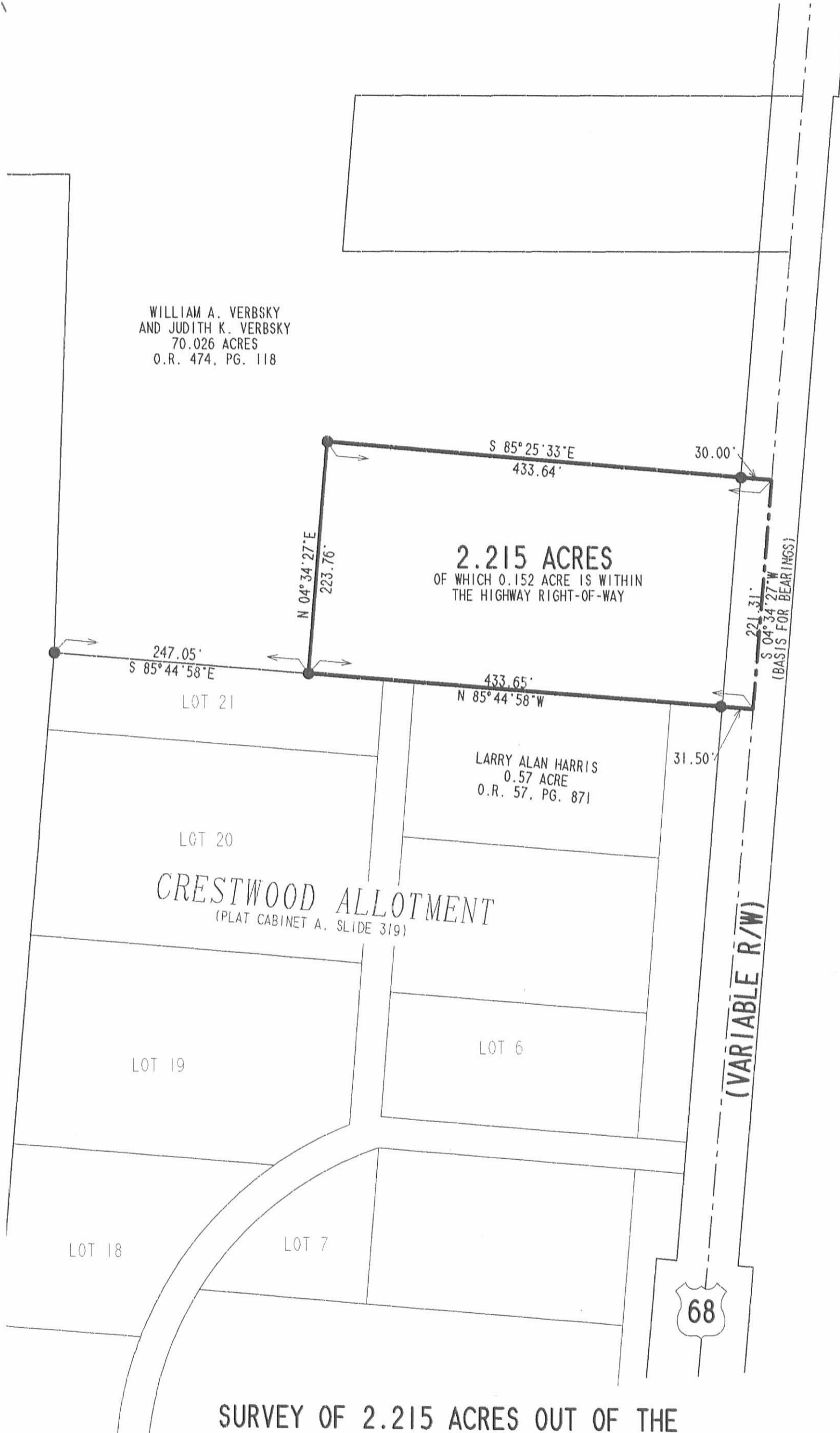


ORIGINAL STAMP IN GREEN L-3027

INDEXED ON MAP
3571 3D



WILLIAM A. VERBSKY
AND JUDITH K. VERBSKY
70.026 ACRES
O.R. 474, PG. 118



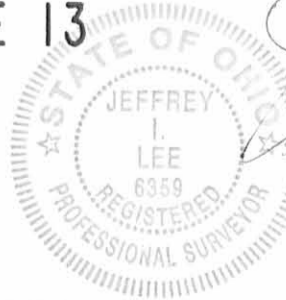
LEGEND:

- 5/8 INCH IRON ROD SET

SURVEY OF 2.215 ACRES OUT OF THE
WILLIAM A. VERBSKY
ORIGINAL 70.026 ACRE TRACT
OFFICIAL RECORD 474, PAGE 118
SECTION 35, TOWN 5, RANGE 13
LIBERTY TOWNSHIP
LOGAN COUNTY, OHIO

SURVEYED BY:

Jeffrey I. Lee
JEFFREY I. LEE
PROFESSIONAL SURVEYOR 6359
JANUARY 4, 2001



ORIGINAL STAMP IN GREEN
D-394

COPYRIGHT 2001 BY:
LEE SURVEYING & MAPPING CO., INC.
117 North Madriver Street
BELLEFONTAINE, OHIO 43311
(937) 593-7335

VERBSKY2
VERBSKY.DAT

L-3027-3

2 WORKING DAYS
BEFORE YOU DIG
CALL TOLL FREE **800-362-2764**
OHIO UTILITIES PROTECTION SERVICE.

INDEXED ON MAP
3571 3P

REC'D 10-27-60 8M OK ✓
Lee Surveying and Mapping Co., Inc.

Land Surveys • Topography • Subdivisions • Construction Layout

117 N. Madriver St.
Bellefontaine OH 43311



Phone: (937) 593-7335
Fax: (937) 593-7444

**OELKER
TRACT A
41.673 ACRES**

Lying in Section 35, Town 5, Range 13, Liberty Township, Logan County, Ohio.

Being out of the Joe A. Oelker original 126.71 acre tract as deeded and described in Official Record 264, Page 963 of the Logan County Records of Deeds and being more particularly described as follows:

Beginning at a railroad spike found within the right-of-way of State Route 508 at the intersection of the center-lines of the original County Highway 191 and Township Road 188.

THENCE, with the center-line of Township Road 188 (60 feet wide), N 4°-08'00" E, a distance of 1545.13 feet to a railroad spike found.

THENCE, with the center-line of Township Road 188 the following seven courses:

N 4°-08'-00" E, a distance of 842.88 feet to a railroad spike found.

N 1°-28'-32" E, a distance of 200.00 feet to a 5/8 inch iron rod set.

N 18°-49'-33" W, a distance of 100.00 feet to a 3/4 inch iron rod found.

N 29°-04'-22" W, a distance of 260.74 feet to a railroad spike set.

N 29°-04'-22" W, a distance of 188.95 feet to a 5/8 inch iron rod found.

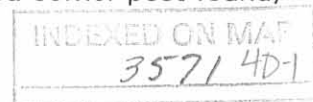
N 26°-27'-59" W, a distance of 499.50 feet to a 3/4 inch iron rod found.

N 29°-06'-09" W, a distance of 199.93 feet to a railroad spike set.

THENCE, S 88°-30'-10" E, a distance of 602.91 feet to a 5/8 inch iron rod set, passing a 5/8 inch iron rod set at 34.85 feet.

THENCE, N 00°-44'-46" W, a distance of 109.05 feet to a 5/8 inch iron rod set at the TRUE POINT OF BEGINNING.

THENCE, N 00°-44'-46" W, a distance of 329.36 feet to a 6 inch wood corner post found, passing a 5/8 inch iron rod set at 327.36 feet.



Lee Surveying and Mapping Co., Inc.

Land Surveys • Topography • Subdivisions • Construction Layout

117 N. Madriver St.
Bellefontaine OH 43311



Phone: (937) 593-7335
Fax: (937) 593-7444

THENCE, with the west line of Crestwood Allotment, S 4°-36'-11" W, a distance of 1805.62 feet to a 5/8 inch iron rod found in concrete.

THENCE, with the west line of the George J. Hresco 3.33 acre tract (O.R. 427, Pg. 817), S 4°-43'-08" W, a distance of 199.37 feet to a 6 inch wood corner post found.

THENCE, with the north line of the William A. Verbsky 14.197 acre tract (O.R. 190, Pg. 952), N 84°-01'-26" W, a distance of 308.41 feet to a 5/8 inch iron rod found, passing a reference 5/8 inch iron rod set at 3.00 feet.


THENCE, with the east line of the Myron D. McCollum 1.022 acre tract (O.R. 367, Pg. 589), N 4°-08'-00" E, a distance of 150.00 feet to a 5/8 inch iron rod found.

THENCE, with the north line of the said 1.022 acre tract, N 84°-01'-27" W, a distance of 296.83 feet to the place of beginning, passing a 5/8 inch iron rod found at 266.81 feet.

Containing 92.360 acres of which 2.665 acres are within the highway rights-of-way.

The basis for bearings is the center-line of Township Road 188 at State Route 508 being N 4°-08'-00" E, and all other bearings are from angles and distances measured in a field survey by Lee Surveying and Mapping Co., Inc. on October 6, 2000.

Description prepared by:


Jeffrey I. Lee
Professional Surveyor 6359
October 13, 2000



ORIGINAL STAMP IN GREEN

L-3027

ON MAP
357/40-10

Lee Surveying and Mapping Co., Inc.

Land Surveys • Topography • Subdivisions • Construction Layout

117 N. Madriver St.
Bellefontaine OH 43311



Phone: (937) 593-7335
Fax: (937) 593-7444

THENCE, with the east line and the east line extended of the Richard G. Oelker, Trustee of the Richard G. Oelker Trust 7.75 acre tract (O.R. 431, Pg. 876), N 1°-04'-03" E, a distance of 1238.67 feet to a 5/8 inch iron rod set.

THENCE, with the south line of the David Max Hartzler 46.84 acre tract (Vol. 345, Pg. 218, Tract II), S 85°-05'-50" E, a distance of 865.96 feet to a 5/8 inch iron rod set.

THENCE, with the west lines of the Gary W. Richardson 2.240 acre tract (O.R. 402, Pg. 528) and the Gary W. Richardson 1.73 acre tract (O.R. 408, Pg. 778), S 3°-43'-40" W, a distance of 493.48 feet to a 5/8 inch iron rod found.

THENCE, with the south lines of the said 1.73 acre tract, the Richard L. Core 0.32 acre tract (Vol. 405, Pg. 350, Tract I) and the Richard L. Martin 0.61 acre tract (O.R. 237, Pg. 399), N 88°-04'-14" E, a distance of 607.97 feet to a point on the center-line of U.S. Route 68 (variable R/W), passing a 5/8 inch iron rod set at 577.78 feet.

THENCE, with the center-line of U.S. Route 68, S 4°-34'-27" W, a distance of 941.56 feet to a point on the said center-line.

THENCE, S 89°-46'-55" W, a distance of 709.43 feet to a 5/8 inch iron rod set, passing a 5/8 inch iron rod set at 30.11 feet.

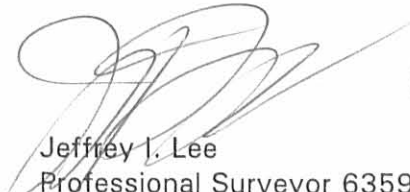
THENCE, S 1°-46'-42" W, a distance of 75.79 feet to a 5/8 inch iron rod set.

THENCE, S 89°-35'-23" W, a distance of 670.27 feet to the place of beginning.

Containing 41.673 acres of which 0.648 acre is within the highway right-of-way.

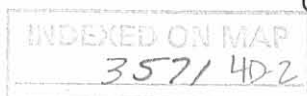
The basis for bearings is the center-line of Township Road 188 at State Route 508 being N 4°-08'-00" E, and all other bearings are from angles and distances measured in a field survey by Lee Surveying and Mapping Co., Inc. on October 6, 2000.

Description prepared by:


Jeffrey I. Lee
Professional Surveyor 6359
October 13, 2000



ORIGINAL STAMP IN GREEN L-3027



REC'D 10-27-00 BMM BK ✓

Lee Surveying and Mapping Co., Inc.

Land Surveys • Topography • Subdivisions • Construction Layout

117 N. Madriver St.
Bellefontaine OH 43311



Phone: (937) 593-7335
Fax: (937) 593-7444

OELKER TRACT B 9.016 ACRES

Lying in Section 35, Town 5, Range 13, Liberty Township, Logan County, Ohio.

Being out of the Joe A. Oelker original 126.71 acre tract as deeded and described in Official Record 264, Page 963 of the Logan County Records of Deeds and being more particularly described as follows:

Beginning at a railroad spike found within the right-of-way of State Route 508 at the intersection of the center-lines of the original County Highway 191 and Township Road 188.

THENCE, with the center-line of Township Road 188 (60 feet wide), N 4°-08'00" E, a distance of 1545.13 feet to a railroad spike found.

THENCE, with the center-line of Township Road 188 the following seven courses:

N 4°-08'-00" E, a distance of 842.88 feet to a railroad spike found.

N 1°-28'-32" E, a distance of 200.00 feet to a 5/8 inch iron rod set.

N 18°-49'-33" W, a distance of 100.00 feet to a 3/4 inch iron rod found.

N 29°-04'-22" W, a distance of 260.74 feet to a railroad spike set.

N 29°-04'-22" W, a distance of 188.95 feet to a 5/8 inch iron rod found.

N 26°-27'-59" W, a distance of 499.50 feet to a 3/4 inch iron rod found.

N 29°-06'-09" W, a distance of 199.93 feet to a railroad spike set.

THENCE, S 88°-30'-10" E, a distance of 602.91 feet to a 5/8 inch iron rod set, passing a 5/8 inch iron rod set at 34.85 feet.

THENCE, N 00°-44'-46" W, a distance of 109.05 feet to a 5/8 inch iron rod set.

THENCE, N 89°-35'-23" E, a distance of 670.27 feet to a 5/8 inch iron rod set.

THENCE, N 1°46'-42" E, a distance of 75.79 feet to a 5/8 inch iron rod set at the TRUE POINT OF BEGINNING.

INDEXED
357/40-3

Lee Surveying and Mapping Co., Inc.

Land Surveys • Topography • Subdivisions • Construction Layout

117 N. Madriver St.
Bellefontaine OH 43311



Phone: (937) 593-7335
Fax: (937) 593-7444

THENCE, N 89°-46'-55" E, a distance of 709.43 feet to a point on the center-line of U.S. Route 68 (variable R/W), passing a 5/8 inch iron rod set at 679.32 feet.

THENCE, with the center-line of U.S. Route 68, S 4°-34'-27" W, a distance of 593.15 feet to a point.

THENCE, with the north lines of the Larry Alan Harris 0.57 acre tract (O.R. 57, Pg. 871) and Lot 21 of Crestwood Allotment (Plat Cabinet A, Slide 319), N 85°-44'-58" W, a distance of 680.70 feet to a 5/8 inch iron rod set, passing a 5/8 inch iron rod set at 31.50 feet.

THENCE, N 1°-46'-42" E, a distance of 538.37 feet to the place of beginning.

Containing 9.016 acres of which 0.408 acre is within the highway right-of-way.

The basis for bearings is the center-line of Township Road 188 at State Route 508 being N 4°-08'-00" E, and all other bearings are from angles and distances measured in a field survey by Lee Surveying and Mapping Co., Inc. on October 6, 2000.

Description prepared by:

A handwritten signature in black ink, appearing to read 'J. Lee', is written over the typed name and title.

Jeffrey I. Lee
Professional Surveyor 6359
October 13, 2000



L-3027



RC 10-30-00 for or

Lee Surveying and Mapping Co., Inc.

Land Surveys • Topography • Subdivisions • Construction Layout

117 N. Madriver St.
Bellefontaine OH 43311



Phone: (937) 593-7335
Fax: (937) 593-7444

OELKER TRACT C 20.836 ACRES

Lying in Section 35, Town 5, Range 13, Liberty Township, Logan County, Ohio.

Being out of the Joe A. Oelker original 126.71 acre tract as deeded and described in Official Record 264, Page 963 of the Logan County Records of Deeds and being more particularly described as follows:

Beginning at a railroad spike found within the right-of-way of State Route 508 at the intersection of the center-lines of the original County Highway 191 and Township Road 188.

THENCE, with the center-line of Township Road 188 (60 feet wide), N 4°-08'00" E, a distance of 1545.13 feet to a railroad spike found.

THENCE, with the center-line of Township Road 188 the following four courses:

N 4°-08'-00" E, a distance of 842.88 feet to a railroad spike found.

N 1°-28'-32" E, a distance of 200.00 feet to a 5/8 inch iron rod set.

N 18°-49'-33" W, a distance of 100.00 feet to a 3/4 inch iron rod found.

N 29°-04'-22" W, a distance of 260.74 feet to a railroad spike set at the TRUE POINT OF BEGINNING.

THENCE, with the center-line of Township Road 188 the following three courses:

N 29°-04'-22" W, a distance of 188.95 feet to a 5/8 inch iron rod found.

N 26°-27'-59" W, a distance of 499.50 feet to a 3/4 inch iron rod found.

N 29°-06'-09" W, a distance of 199.93 feet to a railroad spike set.

THENCE, S 88°-30'-10" E, a distance of 602.91 feet to a 5/8 inch iron rod set, passing a 5/8 inch iron rod set at 34.85 feet.

THENCE, N 00°-44'-46" W, a distance of 109.05 feet to a 5/8 inch iron rod set.

THENCE, N 89°-35'-23" E, a distance of 670.27 feet to a 5/8 inch iron rod set.



Lee Surveying and Mapping Co., Inc.

Land Surveys • Topography • Subdivisions • Construction Layout

117 N. Madriver St.
Bellefontaine OH 43311



Phone: (937) 593-7335
Fax: (937) 593-7444

THENCE, S 1°46'-42" W, a distance of 462.58 feet to a 5/8 inch iron rod set.

THENCE, with the west line of Crestwood Allotment (Plat Cabinet A, Slide 319),
S 4°-36'-11" W, a distance of 489.20 feet to a 5/8 inch iron rod set.

THENCE, N 85°-23'-49" W, a distance of 808.86 feet to the place of beginning, passing a 5/8
inch iron rod set at 772.81 feet.

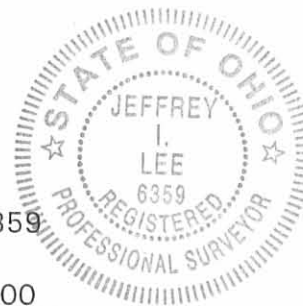
Containing 20.836 acres of which 0.613 acre is within the highway right-of-way.

The basis for bearings is the center-line of Township Road 188 at State Route 508 being
N 4°-08'-00" E, and all other bearings are from angles and distances measured in a field survey by
Lee Surveying and Mapping Co., Inc. on October 6, 2000.

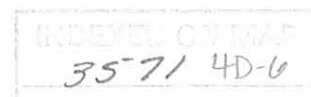
Description prepared by:

A handwritten signature in black ink, appearing to read 'J. Lee', is written over the printed name and title.

Jeffrey I. Lee
Professional Surveyor 6359
October 13, 2000
Revised: October 27, 2000



ORIGINAL STAMP IN GREEN L-3027



REC'D 10-27-00 SWY OK ✓

Lee Surveying and Mapping Co., Inc.

Land Surveys • Topography • Subdivisions • Construction Layout

117 N. Madriver St.
Bellefontaine OH 43311



Phone: (937) 593-7335
Fax: (937) 593-7444

OELKER TRACT D 20.836 ACRES

Lying in Section 35, Town 5, Range 13, Liberty Township, Logan County, Ohio.

Being out of the Joe A. Oelker original 126.71 acre tract as deeded and described in Official Record 264, Page 963 of the Logan County Records of Deeds and being more particularly described as follows:

Beginning at a railroad spike found within the right-of-way of State Route 508 at the intersection of the center-lines of the original County Highway 191 and Township Road 188.

THENCE, with the center-line of Township Road 188 (60 feet wide), N 4°-08'00" E, a distance of 1545.13 feet to a railroad spike found at the TRUE POINT OF BEGINNING.

THENCE, with the center-line of Township Road 188 the following four courses:

N 4°-08'-00" E, a distance of 842.88 feet to a railroad spike found.

N 1°-28'-32" E, a distance of 200.00 feet to a 5/8 inch iron rod set.

N 18°-49'-33" W, a distance of 100.00 feet to a 3/4 inch iron rod found.

N 29°-04'-22" W, a distance of 260.74 feet to a railroad spike set.

THENCE, S 85°-23'-49" E, a distance of 808.86 feet to a 5/8 inch iron rod set, passing a 5/8 inch iron rod set at 36.05 feet.

THENCE, with the west line of Crestwood Allotment (Plat Cabinet A, Slide 319), S 4°-36'-11" W, a distance of 1316.42 feet to a 5/8 inch iron rod found in concrete.

THENCE, with the west line of the George J. Hresco 3.33 acre tract (O.R. 427, Pg. 817), S 4°-43'-08" W, a distance of 199.37 feet to a 6 inch wood corner post found.

THENCE, with the north line of the William A. Verbsky 14.197 acre tract (O.R. 190, Pg. 952), N 84°-01'-26" W, a distance of 308.41 feet to a 5/8 inch iron rod found, passing a reference 5/8 inch iron rod set at 3.00 feet.

THENCE, with the east line of the Myron D. McCollum 1.022 acre tract (O.R. 367, Pg. 589), N 4°-08'-00" E, a distance of 150.00 feet to a 5/8 inch iron rod found.

INDEXED ON MAP
3571407

Lee Surveying and Mapping Co., Inc.

Land Surveys • Topography • Subdivisions • Construction Layout

117 N. Madriver St.
Bellefontaine OH 43311



Phone: (937) 593-7335
Fax: (937) 593-7444

THENCE, with the north line of the said 1.022 acre tract, N 84°-01'-27" W, a distance of 296.83 feet to the place of beginning, passing a 5/8 inch iron rod found at 266.81 feet.

Containing 20.836 acres of which 0.996 acre is within the highway right-of-way.

The basis for bearings is the center-line of Township Road 188 at State Route 508 being N 4°-08'-00" E, and all other bearings are from angles and distances measured in a field survey by Lee Surveying and Mapping Co., Inc. on October 6, 2000.

Description prepared by:

A handwritten signature in black ink, appearing to read 'J. Lee', is written over the typed name and title.

Jeffrey I. Lee
Professional Surveyor 6359
October 13, 2000



L-3027

ORIGINAL STAMP IN GREEN

INDEXED ON MAP
357/ 4D-8

Lee Surveying and Mapping Co., Inc.

Land Surveys • Topography • Subdivisions • Construction Layout

117 N. Madriver St.
Bellefontaine OH 43311



Phone: (937) 593-7335
Fax: (937) 593-7444

OELKER 92.361 ACRES

Lying in Section 35, Town 5, Range 13, Liberty Township, Logan County, Ohio.

Being out of the Joe A. Oelker original 126.71 acre tract as deeded and described in Official Record 264, Page 963 of the Logan County Records of Deeds and being more particularly described as follows:

Beginning at a railroad spike found within the right-of-way of State Route 508 at the intersection of the center-lines of the original County Highway 191 and Township Road 188.

THENCE, with the center-line of Township Road 188 (60 feet wide), N 4°-08'00" E, a distance of 1545.13 feet to a railroad spike found at the TRUE POINT OF BEGINNING.

THENCE, with the center-line of Township Road 188 the following six courses:

N 4°-08'-00" E, a distance of 842.88 feet to a railroad spike found.

N 1°-28'-32" E, a distance of 200.00 feet to a 5/8 inch iron rod set.

N 18°-49'-33" W, a distance of 100.00 feet to a 3/4 inch iron rod found.

N 29°-04'-22" W, a distance of 449.69 feet to a 5/8 inch iron rod found.

N 26°-27'-59" W, a distance of 499.50 feet to a 3/4 inch iron rod found.

N 29°-06'-09" W, a distance of 199.93 feet to a railroad spike set.

THENCE, S 88°-30'-10" E, a distance of 602.91 feet to a 5/8 inch iron rod set, passing a 5/8 inch iron rod set at 34.85 feet.

THENCE, N 00°-44'-46" W, a distance of 438.41 feet to a 6 inch wood corner post found, passing a 5/8 inch iron rod set at 436.42 feet.

THENCE, with the east line and the east line extended of the Richard G. Oelker, Trustee of the Richard G. Oelker trust 7.75 acre tract (O.R. 431, Pg. 876), N 1°-04'-03" E, a distance of 1238.67 feet to a 5/8 inch iron rod set.

THENCE, with the south line of the David Max Hartzler 46.84 acre tract (Vol. 345, Pg. 218, Tract II), S 85°-05'-50" E, a distance of 865.96 feet to a 5/8 inch iron rod set.

THENCE, with the west lines of the Gary W. Richardson 2.240 acre tract (O.R. 402, Pg. 528) and the Gary W. Richardson 1.73 acre tract (O.R. 408, Pg. 778), S 3°-43'-40" W, a distance of 493.48 feet to a 5/8 inch iron rod found.

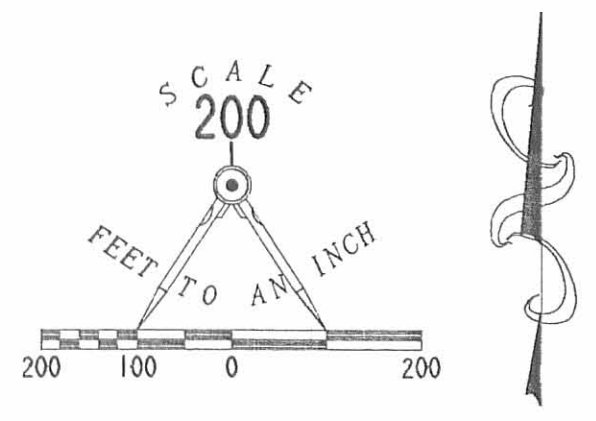
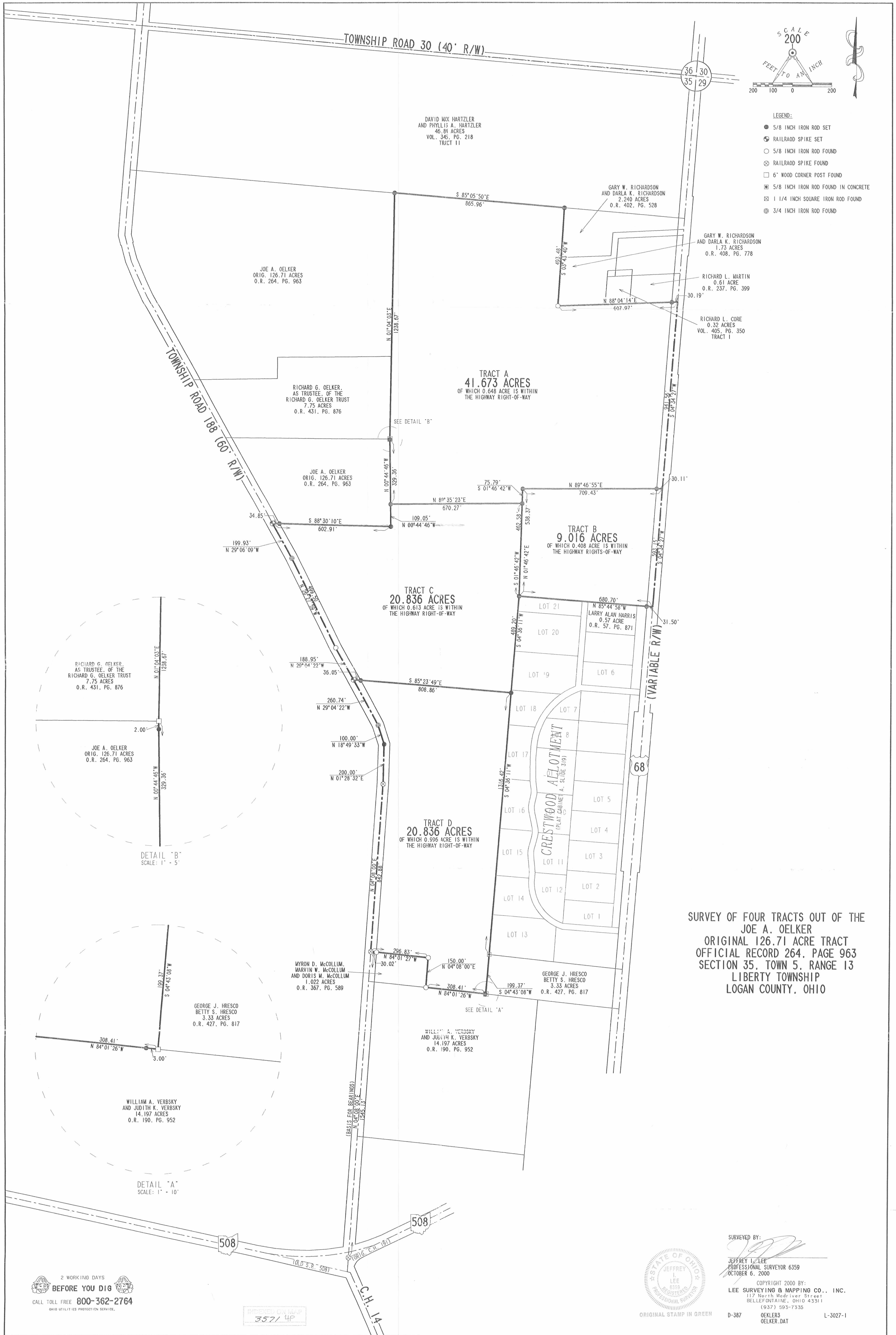
THENCE, with the south lines of the said 1.73 acre tract, the Richard L. Core 0.32 acre tract (Vol. 405, Pg. 350, Tract I) and the Richard L. Martin 0.61 acre tract (O.R. 237, Pg. 399), N 88°-04'-14" E, a distance of 607.97 feet to a point on the center-line of U.S. Route 68 (variable R/W), passing a 5/8 inch iron rod set at 577.78 feet.

THENCE, with the center-line of U.S. Route 68, S 4°-34'-27" W, a distance of 1534.71 feet to a point on the said center-line.

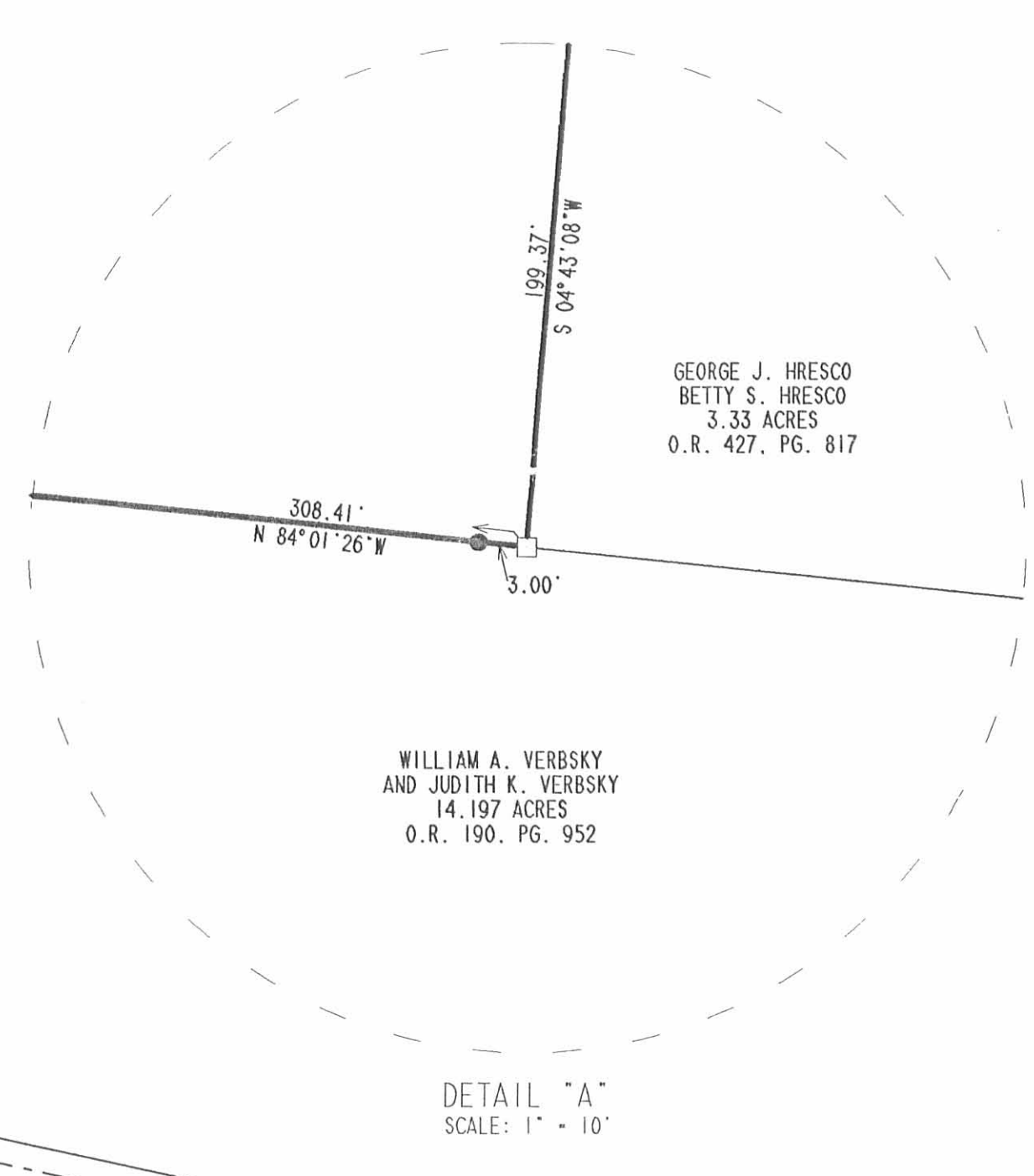
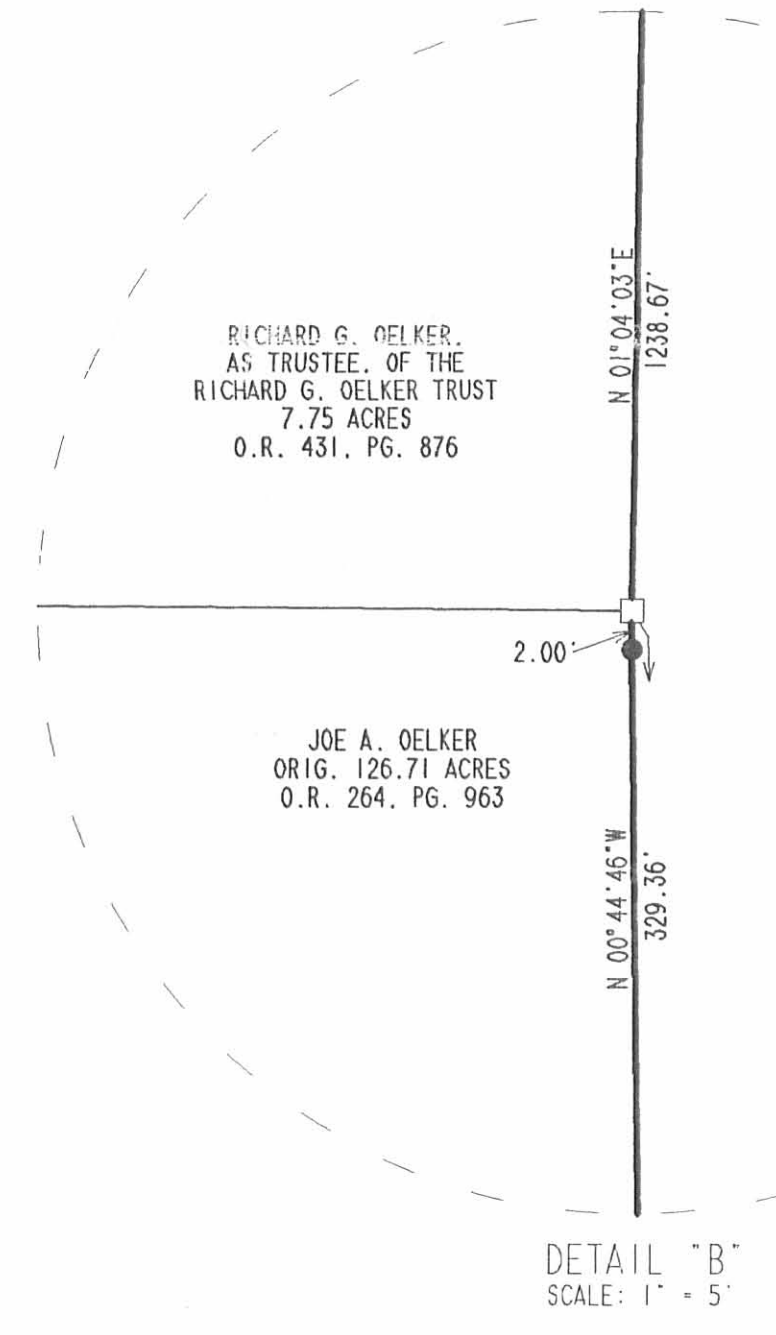
THENCE, with the north lines of the Larry Alan Harris 0.57 acre tract (O.R. 57, Pg. 871) and Crestwood Allotment (Plat Cabinet A, Slide 319), N 85°-44'-58" W, a distance of 680.70 feet to a 5/8 inch iron rod set, passing a 5/8 inch iron rod set at 31.50 feet.

INDEXED ON MAP
352/4D-9

REVISED 10-27-00 SWY OK



- LEGEND:**
- 5/8 INCH IRON ROD SET
 - ⊕ RAILROAD SPIKE SET
 - 5/8 INCH IRON ROD FOUND
 - ⊙ RAILROAD SPIKE FOUND
 - 6" WOOD CORNER POST FOUND
 - ⊗ 5/8 INCH IRON ROD FOUND IN CONCRETE
 - ⊠ 1 1/4 INCH SQUARE IRON ROD FOUND
 - ⊕ 3/4 INCH IRON ROD FOUND



SURVEY OF FOUR TRACTS OUT OF THE JOE A. OELKER ORIGINAL 126.71 ACRE TRACT OFFICIAL RECORD 264, PAGE 963 SECTION 35, TOWN 5, RANGE 13 LIBERTY TOWNSHIP LOGAN COUNTY, OHIO

SURVEYED BY:
 JEFFREY T. LEE
 PROFESSIONAL SURVEYOR 6359
 OCTOBER 6, 2000

COPYRIGHT 2000 BY:
 LEE SURVEYING & MAPPING CO., INC.
 117 North Madison Street
 BELLEFONTAINE, OHIO 43311
 (937) 593-7335



ORIGINAL STAMP IN GREEN

D-387 OELKER3 OELKER.DAT L-3027-1

2 WORKING DAYS
BEFORE YOU DIG
 CALL TOLL FREE 800-362-2764
 OHIO UTILITIES PROTECTION SERVICE.

INDEXED ON MAP
 3571 4P