

B. Wilson Survey Description

October, 1972

Being situated in Liberty Township, Logan County, Ohio; and being a part of Section 36, Town 5, Range 13, M. R. S..

Beginning at a iron in the center of County Road 32 that bears N 7° - 15'E 713.0 feet from the intersection of County Road 30. with said County Road 32.

Thence with the center of County Road 32 N 7° - 15'E 362.0 feet to a iron at an angle in the road.

Thence again with the center of County Road 32 N 6° - 58'W 228.7 feet to a iron, .

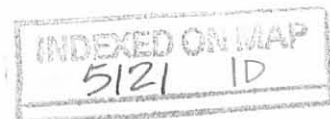
Thence S 84° - 12'E 362.0 feet to a iron, passing thru a iron at 13.0 feet.

Thence S 7° - 16'W 593.0 feet to a iron.

Thence N 82° - 45'W 305.5 feet to the place of beginning, passing thru a iron at 288.5 feet.

Containing 4.27 acres more or less. Being surveyed from a 57.70 acre tract.

Owen K. Shirk
Surveyor 4271



B. WILSON SURVEY

LIBERTY TOWNSHIP, LOGAN COUNTY, OHIO
SECTION 36, TOWNSHIP 5, RANGE 13, M.R.S.

1" = 100' - • DENOTES IRON



INDEXED ON MAP
5121 1P

0-27-15
Lee Surveying and Mapping Co., Inc.



Land Surveys • Topography • Subdivisions • Construction Layout

117 N. Madriver St.
Bellefontaine OH 43311



Phone: (937) 593-7335
Fax: (937) 593-7444
surveys@lsminc.us

**DIURBA AND WILSON
1.106 ACRE**

Lying in Section 36, Town 5, Range 13, Liberty Township, Logan County, Ohio.

Being part of the Brenda Diurba and Sharon Wilson original 57.7 acre tract as deeded and described in Official Record 1171, Page 553, Tract III and being more particularly described as follows:

Beginning at a 5/8 inch iron rod found at the intersection of center-lines of Township Road 32 (60 feet wide) and Township Road 249 (60 feet wide).

THENCE, with the center-line of Township Road 32 the following three courses:

S 11°-30'-27"W, a distance of 130.49 feet to a 1/2 inch iron rod found.

S 06°-58'-06"E, a distance of 1522.54 feet to a 1 inch iron rod found.

S 07°-15'-00"W, a distance of 361.98 feet to a 1/2 inch iron rod found at the TRUE POINT OF BEGINNING.

THENCE, with the south line of the Carl R. Newcomer and Elaine S. Newcomer 4.27 acre tract (O.R. 1151, Pg. 92), S 82°-42'-30"E, a distance of 305.08 feet to a 1/2 inch iron rod found, passing a 5/8 inch iron rod set at 30.00 feet.

THENCE, S 07°-18'-13"W, a distance of 160.56 feet to a 5/8 inch iron rod set.

THENCE, N 81°-44'-36"W, a distance of 304.98 feet to a MAG nail set, passing a 5/8 inch iron rod set at 274.97 feet.

THENCE, with the center-line of Township Road 32, N 07°-15'-00"E, a distance of 155.43 feet to the point of beginning.

Containing 1.106 acres of which 0.107 acre is within the highway right-of-way.

Property is subject to any and all previous easements and rights-of-way of record.

The basis for bearings is the west line of Section 36, being N 08°-03'-48"E, and all other bearings are from angles and distances measured in a field survey by Lee Surveying and Mapping Co., Inc. on August 18, 2015.



Description prepared by:

William K. Bruce
William K. Bruce
Professional Surveyor 7437
August 18, 2015

L-59730715

INDEXED ON MAP
5/21/2011

8-27-15

Lee Surveying and Mapping Co., Inc.



Land Surveys • Topography • Subdivisions • Construction Layout

117 N. Madriver St.
Bellefontaine OH 43311



Phone: (937) 593-7335
Fax: (937) 593-7444
surveys@lsminc.us

DIURBA AND WILSON 1.286 ACRE

Lying in Section 36, Town 5, Range 13, Liberty Township, Logan County, Ohio.

Being part of the Brenda Diurba and Sharon Wilson original 57.7 acre tract as deeded and described in Official Record 1171, Page 553, Tract III and being more particularly described as follows:

Beginning at a 5/8 inch iron rod found at the intersection of center-lines of Township Road 32 (60 feet wide) and Township Road 249 (60 feet wide).

THENCE, with the center-line of Township Road 32 the following two courses:

S 11°-30'-27"W, a distance of 130.49 feet to a 1/2 inch iron rod found.

S 06°-58'-06"E, a distance of 1148.88 feet to a MAG nail set at the TRUE POINT OF BEGINNING.

THENCE, S 85°-52'-18"E, a distance of 398.15 to a 5/8 inch iron rod set, passing a 5/8 inch iron rod set at 30.57 feet.

THENCE, S 07°-18'-13"W, a distance of 153.10 feet to a 1/2 inch iron rod found.

THENCE, with the north line of the Carl R. Newcomer and Elaine S. Newcomer 4.27 acre tract (O.R. 1151, Pg. 92), N 84°-12'-06"W, a distance of 361.91 feet to a 1/2 inch iron rod found, passing a 5/8 inch iron rod set at 331.15 feet.

THENCE, with the center-line of Township Road 32, N 06°-58'-06"W, a distance of 145.03 feet to the point of beginning.

Containing 1.286 acres of which 0.100 acre is within the highway right-of-way.

Property is subject to any and all previous easements and rights-of-way of record.

The basis for bearings is the west line of Section 36, being N 08°-03'-48"E, and all other bearings are from angles and distances measured in a field survey by Lee Surveying and Mapping Co., Inc. on August 18, 2015.

Description prepared by:

William K. Bruce
Professional Surveyor 7437
August 18, 2015



L-59730715

INDEXED ON MAP
3121 2D-2

8-27-15

Lee Surveying and Mapping Co., Inc.



Land Surveys • Topography • Subdivisions • Construction Layout

117 N. Madriver St.
Bellefontaine OH 43311



Phone: (937) 593-7335
Fax: (937) 593-7444
surveys@lsminc.us

DIURBA AND WILSON 78.042 ACRE

Lying in Section 36, Town 5, Range 13, Liberty Township, Logan County, Ohio.

Being all of the remainder of the Brenda Diurba and Sharon Wilson original 45.95 acre tract, part of the original 57.7 acre tract and all of the 22.71 acre tract as deeded and described in Official Record 1171, Page 553, Tracts I, III and IV and being more particularly described as follows:

Beginning at a 5/8 inch iron rod found at the intersection of center-lines of Township Road 32 (60 feet wide) and Township Road 249 (60 feet wide).

THENCE, with the center-line of Township Road 249, S 82°-13'-31"E, a distance of 1817.13 feet to a MAG nail set.

THENCE, with the west right-of-way of the West Central Ohio Port Authority Bellefontaine Secondary Line Code 8231 (O.R. 268, Pg. 44) the following two courses:

S 13°-20'-23"W, a distance of 2189.73 feet to a 5/8 inch iron rod set, passing a 5/8 inch iron rod set at 30.14 feet.

S 13°-45'-55"W, a distance of 289.62 feet to a 8 inch wood post found.

THENCE, with the lines of the Terence A. Brown and Christine Brown 2.790 acre tract (O.R. 1168, Pg. 423), the following two courses:

N 82°-19'-08"W, a distance of 684.45 feet to a 5/8 inch iron rod set.

S 08°-32'-55"W, a distance of 211.58 feet to a MAG nail set passing a 5/8 inch iron rod set at 181.58 feet.

THENCE, with the center-line of Township Road 30 (60 feet wide) and the south line of Section 36, the following two courses:

N 82°-25'-43"W, a distance of 1.32 feet to a stone found at station 44+92.

N 82°-01'-00"W, a distance of 497.10 feet to a MAG nail set.

THENCE, with the center-line of Township Road 32, N 07°-15'-00"E, a distance of 558.34 feet to a MAG nail set, passing a railroad spike found at 0.54 feet.

THENCE, S 81°-44'-36"E, a distance of 304.98 feet to a 5/8 inch iron rod set, passing a 5/8 inch iron rod set at 30.01 feet.

THENCE, with the Carl R. Newcomer and Elaine S. Newcomer 4.27 acre tract (O.R. 1151, Pg. 92) east line and said line extended south and north, N 07°-18'-13"E, a distance of 906.65 feet to a 5/8 inch iron rod set, passing 1/2 inch iron rods found at 160.56 feet and 753.55 feet.

THENCE, N 85°-52'-18"W, a distance of 398.15 feet to a MAG nail set, passing a 5/8 inch iron rod set at 367.58 feet.

THENCE, with the center-line of Township Road 32 the following two courses:

N 06°-58'-06"W, a distance of 1148.88 feet to a 1/2 inch iron rod found.

Lee Surveying and Mapping Co., Inc.

Land Surveys • Topography • Subdivisions • Construction Layout

117 N. Madriver St.
Bellefontaine OH 43311



Phone: (937) 593-7335
Fax: (937) 593-7444
surveys@lsminc.us

N 11°-30'-27"E, a distance of 130.49 feet to the point of beginning.

Containing 78.042 acres of which 2.818 acres is within the highway right-of-way.

Property is subject to any and all previous easements and rights-of-way of record.

The basis for bearings is the west line of Section 36, being N 08°-03'-48"E, and all other bearings are from angles and distances measured in a field survey by Lee Surveying and Mapping Co., Inc. on August 18, 2015.

Description prepared by:

A handwritten signature in black ink, reading 'William K. Bruce', written in a cursive style.

William K. Bruce
Professional Surveyor 7437
August 18, 2015



ORIGINAL STAMP IN GREEN

L-59730715

INDEXED ON MAP
5121 2D-4

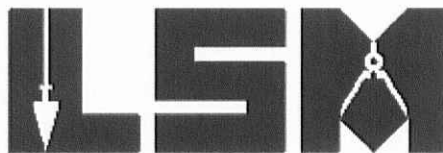
8-27-15

Lee Surveying and Mapping Co., Inc.



Land Surveys • Topography • Subdivisions • Construction Layout

117 N. Madriver St.
Bellefontaine OH 43311



Phone: (937) 593-7335
Fax: (937) 593-7444
surveys@lsminc.us

DIURBA AND WILSON 65.003 ACRE

Lying in Section 36, Town 5, Range 13, Liberty Township, Logan County, Ohio.

Being all of the Brenda Diurba and Sharon Wilson 23.05 acre tract and part of the Brenda Diurba and Sharon Wilson original 57.7 acre tract as deeded and described in Official Record 1171, Page 553, Tracts II and III and being more particularly described as follows:

Beginning at a resurvey monument found inside a monument box found at the southwest corner of Section 36 on the center-line of Township Road 30 (widths vary) at Station 27+94.5 per Logan County Engineer's file X-30.

THENCE, with the west line of Section 36, and the east line of the Chester Loffer and Nancy Sue Loffer, Trustees 114.690 acre tract (O.R. 880, Pg. 418) and east line of the Stephen R. Schlumbohm and Christine E. Schlumbohm 42.94 acre tract (O.R. 1063, Pg. 961, Tract II), N 08°-03'-48"E, a distance of 2672.79 feet to a stone found, passing a 5/8 inch iron rod set at 20.00 feet.

THENCE, with the south line of the Keith A. Hardwick and Trista A. Hardwick 5.000 acre tract (O.R. 929, Pg. 390), S 82°-20'-28"E, a distance of 795.81 feet to a 5/8 inch iron rod found, passing a 5/8 inch iron rod set at 765.74 feet.

THENCE, with the center-line of Township Road 32 (60 feet wide), the following three courses:

S 11°-30'-27"W, a distance of 130.49 feet to a 1/2 inch iron rod found.

S 06°-58'-06"E, a distance of 1522.54 feet to a 1 inch iron rod found, passing a MAG nail set at 1148.88 feet and a 1/2 inch iron rod found at 1293.91 feet.

S 07°-15'-00"W, a distance of 1075.75 feet to a to a MAG nail set, passing a 1/2 inch iron rod found at 361.98 feet, a MAG nail set at 517.41 and a railroad spike found at 1075.21 feet.

THENCE, with the center-line of Township Road 30 (40 feet wide) and the south line of Section 36 the following two courses:

N 82°-01'-00"W, a distance of 428.60 feet to a stone found at station 35+64.

INDEXED ON MAP
5121 2D-5

Lee Surveying and Mapping Co., Inc.

Land Surveys • Topography • Subdivisions • Construction Layout

117 N. Madriver St.
Bellefontaine OH 43311



Phone: (937) 593-7335
Fax: (937) 593-7444
surveys@lsminc.us

N 82°-02'-49"W, a distance of 769.50 feet to the point of beginning.

Containing 65.003 acres of which 2.417 acre is within the highway right-of-way.

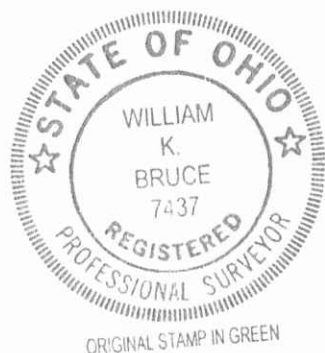
Property is subject to any and all previous easements and rights-of-way of record.

The basis for bearings is the west line of Section 36, being N 08°-03'-48"E, and all other bearings are from angles and distances measured in a field survey by Lee Surveying and Mapping Co., Inc. on August 18, 2015.

Description prepared by:

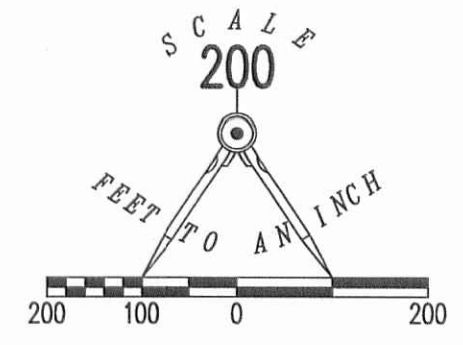
A handwritten signature in black ink that reads "William K. Bruce".

William K. Bruce
Professional Surveyor 7437
August 18, 2015

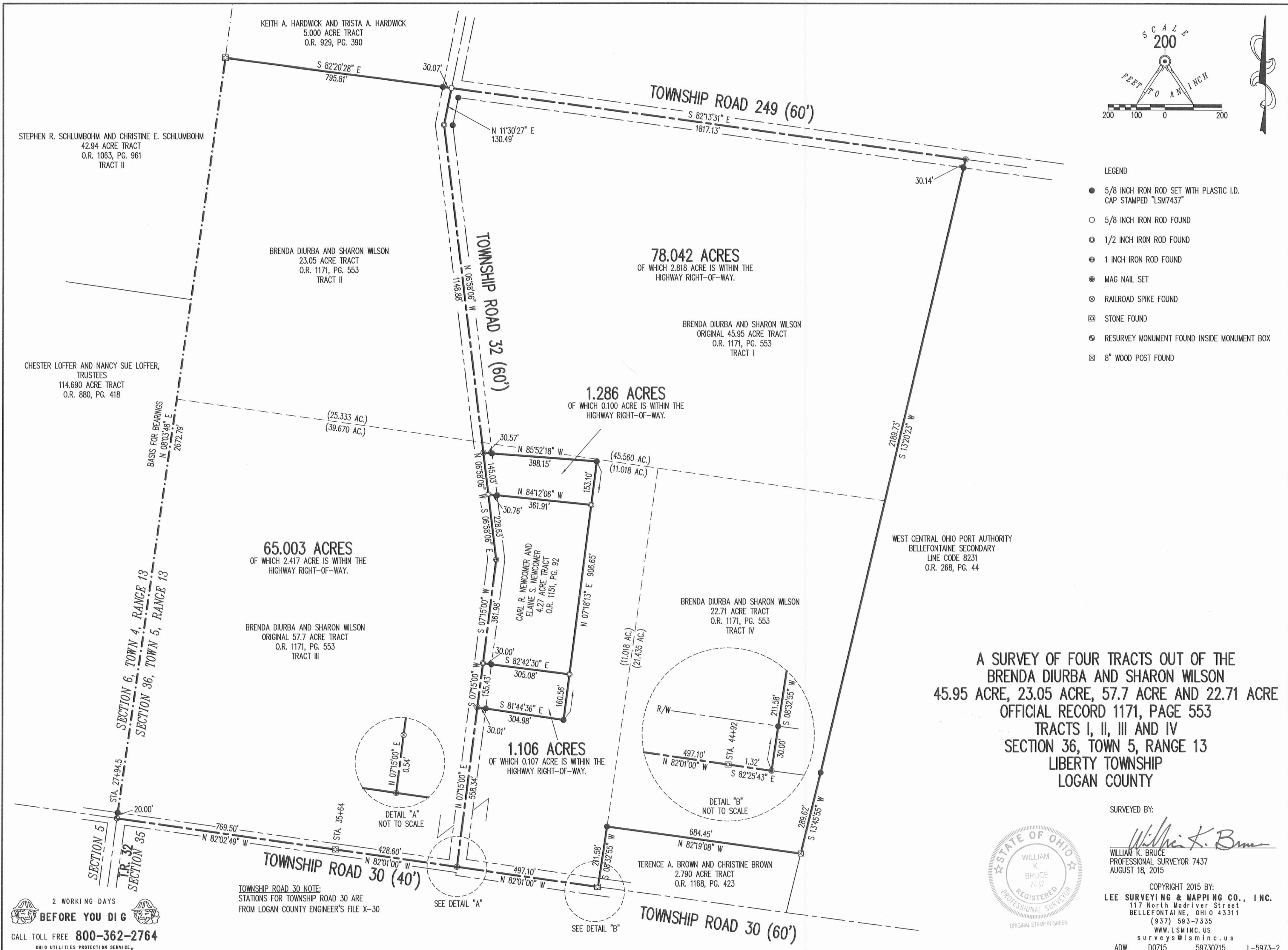


L-59730715

INDEXED ON MAP
5121 2D-6



- LEGEND
- 5/8 INCH IRON ROD SET WITH PLASTIC I.D. CAP STAMPED "LSM7437"
 - 5/8 INCH IRON ROD FOUND
 - ⊙ 1/2 INCH IRON ROD FOUND
 - ⊕ 1 INCH IRON ROD FOUND
 - ⊗ MAG NAIL SET
 - ⊗ RAILROAD SPIKE FOUND
 - ⊗ STONE FOUND
 - ⊗ RESURVEY MONUMENT FOUND INSIDE MONUMENT BOX
 - ⊗ 8" WOOD POST FOUND



A SURVEY OF FOUR TRACTS OUT OF THE BRENDA DIURBA AND SHARON WILSON 45.95 ACRE, 23.05 ACRE, 57.7 ACRE AND 22.71 ACRE OFFICIAL RECORD 1171, PAGE 553 TRACTS I, II, III AND IV SECTION 36, TOWN 5, RANGE 13 LIBERTY TOWNSHIP LOGAN COUNTY

SURVEYED BY:

 WILLIAM K. BRUCE
 PROFESSIONAL SURVEYOR 7437
 AUGUST 18, 2015



COPYRIGHT 2015 BY:
LEE SURVEYING & MAPPING CO., INC.
 117 North Madriver Street
 BELLEFONTAINE, OHIO 43311
 (937) 593-7335
 WWW.LSMINC.US
 surveys@lsminc.us

2 WORKING DAYS
BEFORE YOU DIG
 CALL TOLL FREE 800-362-2764
 OHIO UTILITIES PROTECTION SERVICE

ADW D0715 59730715 L-5973-2

INDEXED ON MAP
 5/21/22