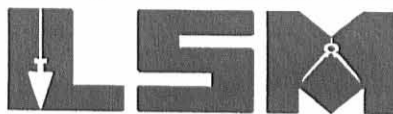


FEED 12-12-06 SWM OK

Lee Surveying and Mapping Co., Inc.

Land Surveys • Topography • Subdivisions • Construction Layout

117 N. Madriver St.
Bellefontaine OH 43311



Phone: (937) 593-7335
Fax: (937) 593-7444

1975-2006 - 30 YEARS OF EXCELLENCE

**FULKERSON
3.662 ACRES**

Lying in Section 32, Town 4, Range 14, Liberty Township, Logan County, Ohio.

Being out of the John P. Fulkerson and Betty E. Fulkerson original 10 acre tract, original 0.18 acre tract and original 1 acre tract as deeded and described in Official Record 125, Page 71, Tracts I, II and III of the Logan County Records of Deeds and being more particularly described as follows:

Commencing at a railroad spike found on the south line of Section 32 at the intersection of center-lines of Township Road 199 and Dipple Drive.

THENCE, with the south line of Section 32 and the center-line of Township Road 199 (50 feet wide), S 87°-43'-00"E, a distance of 195.15 feet to a railroad spike found at the TRUE POINT OF BEGINNING.

THENCE, with the east line of the Robert M. Yelton 1.081 acre tract (O.R. 35, Pg. 530), N 2°-17'-00"E, a distance of 314.22 feet to a 5/8 inch iron rod set, passing a 5/8 inch iron rod found at 25.00 feet.

THENCE, with the south lines of the Hi-Point Industries, Inc., 5.072 acre tract (O.R. 205, Pg. 954) and the Daniel J. Freyhof 0.44 acre tract (O.R. 588, Pg. 760, Tract II), S 87°-48'-57"E, a distance of 516.14 feet to a 1 inch iron pipe found.

THENCE, with the west line of the Daniel J. Freyhof 0.92 acre tract (O.R. 588, Pg. 760, Tract I), S 2°-16'-58"W, a distance of 270.88 feet to a 5/8 inch iron rod set.

THENCE, with the north line of the State of Ohio 0.067 acre tract (Parcel No. 6-WD, O.R. 173, Pg. 584), the following three courses:

S 76°-38'-53"W, a distance of 17.34 feet to a 5/8 inch iron rod set.

S 81°-53'-27"W, a distance of 66.84 feet to a 5/8 inch iron rod set.

S 2°-17'-00"W, a distance of 27.50 feet to a MAG nail set on the south line of Section 32 and the center-line of Township Road 199.

THENCE, with the south line of Section 32 and the center-line of Township Road 199, N 87°-43'-00"W, a distance of 433.70 feet to the point of beginning.

Containing 3.662 acres, of which 0.252 acre is within the highway right-of-way.

The basis for bearings is the south line of Section 32, being N 87°-43'-00"W, and all other bearings are from angles and distances measured in a field survey by Lee Surveying and Mapping Co., Inc. on December 6, 2006.



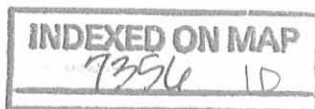
ORIGINAL STAMP IN GREEN

Description prepared by:

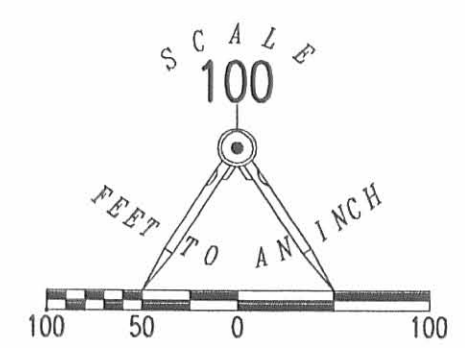
A handwritten signature in black ink, appearing to read 'Jeffrey I. Lee'.

Jeffrey I. Lee
Professional Surveyor 6359
December 11, 2006

1261116



REC'D 12-12-06 SMY OR



- LEGEND:
- ⊗ RAILROAD SPIKE FOUND
 - ⊙ 1/2 INCH IRON ROD FOUND
 - ⊕ 1 INCH IRON PIPE FOUND
 - MAG NAIL SET
 - 5/8 INCH IRON ROD SET
 - 5/8 INCH IRON ROD FOUND

RANDALL L. ROBERTS
12.04 ACRES
VOL. 402, PG. 971

DANIEL J. FREYHOF
48.89 ACRES
VOL. 404, PG. 110
TRACT I

JOHN P. FULKERSON AND
BETTY E. FULKERSON
ORIGINAL 1 ACRE TRACT
O.R. 125, PG. 71
TRACT III

HI-POINT INDUSTRIES, INC.
5.072 ACRES
O.R. 205, PG. 954

DANIEL J. FREYHOF
0.44 ACRE
O.R. 588, PG. 760
TRACT II

JOHN P. FULKERSON AND
BETTY E. FULKERSON
ORIGINAL 0.18 ACRE TRACT
O.R. 125, PG. 71
TRACT II

JOHN P. FULKERSON AND
BETTY E. FULKERSON
ORIGINAL 10 ACRE TRACT
O.R. 125, PG. 71
TRACT I

ROBERT M. YELTON
1.081 ACRES
O.R. 35, PG. 530

3.662 ACRES
OF WHICH 0.252 ACRE IS WITHIN
THE HIGHWAY RIGHT-OF-WAY

JOHN P. FULKERSON AND
BETTY E. FULKERSON
ORIGINAL 0.18 ACRE TRACT
O.R. 125, PG. 71
TRACT II

DANIEL J. FREYHOF
0.92 ACRE
O.R. 588, PG. 760
TRACT I

JOHN P. FULKERSON AND
BETTY E. FULKERSON
ORIGINAL 10 ACRE TRACT
O.R. 125, PG. 71
TRACT I

STATE OF OHIO
0.067 ACRE
PARCEL NO. 6-WD
O.R. 173, PG. 584

STATE OF OHIO
0.260 ACRE
PARCEL NO. 2-WD
O.R. 166, PG. 761

TOWNSHIP ROAD 199 (50')

DIPPLE DRIVE

SECTION 32, TOWN 4, RANGE 14
SECTION 31, TOWN 4, RANGE 14

**SURVEY OF 3.662 ACRES OUT OF THE
JOHN P. FULKERSON AND
BETTY E. FULKERSON
ORIGINAL 10 ACRE TRACT,
ORIGINAL 0.18 ACRE TRACT
AND ORIGINAL 1 ACRE TRACT
OFFICIAL RECORD 125, PAGE 71
TRACTS I, II AND III
SECTION 32, TOWN 4, RANGE 14
LIBERTY TOWNSHIP
LOGAN COUNTY, OHIO**

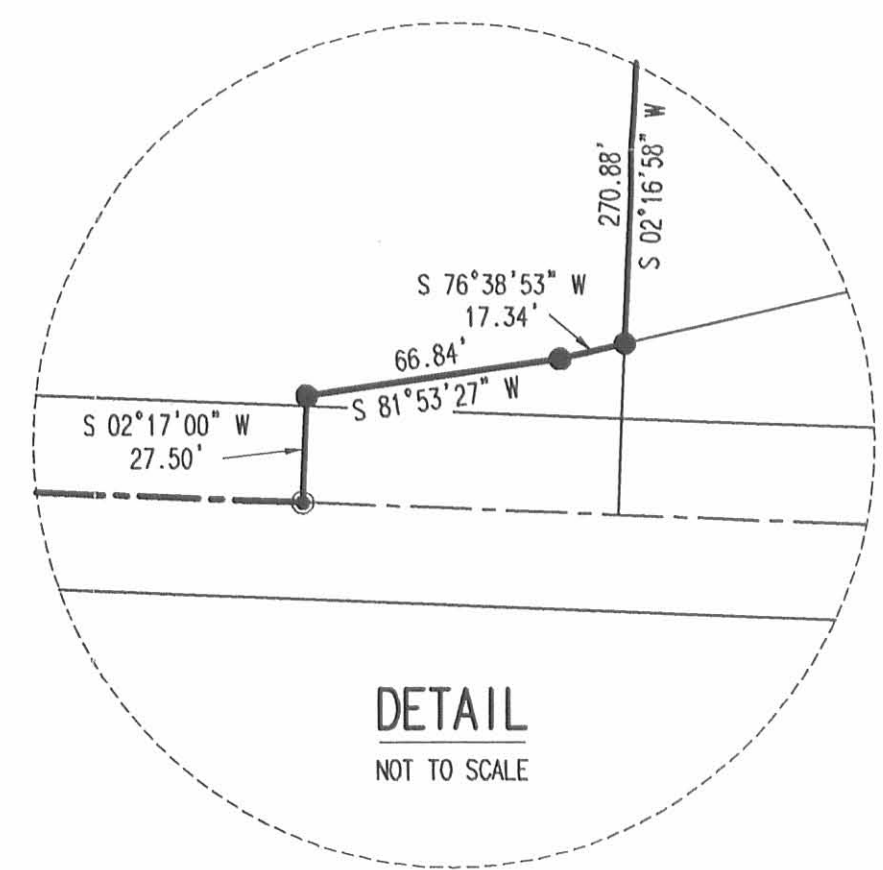
SURVEYED BY:

JEFFREY L. LEE
PROFESSIONAL SURVEYOR 6359
DECEMBER 6, 2006

COPYRIGHT 2006 BY:
LEE SURVEYING & MAPPING CO., INC.
117 North Madriver Street
BELLEFONTAINE, OHIO 43311
(937) 593-7335



ORIGINAL STAMP IN GREEN



INDEXED ON MAP
7356 1P

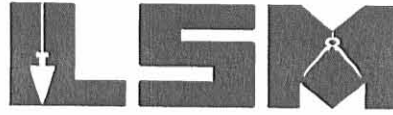
2 WORKING DAYS
BEFORE YOU DIG
CALL TOLL FREE **800-362-2764**
OHIO UTILITIES PROTECTION SERVICE.

REC'D 12-11-06 SAM OK

Lee Surveying and Mapping Co., Inc.

Land Surveys • Topography • Subdivisions • Construction Layout

117 N. Madriver St.
Bellefontaine OH 43311



Phone: (937) 593-7335
Fax: (937) 593-7444

1975-2005 - 30 YEARS OF EXCELLENCE

**FULKERSON
1.312 ACRES**

Lying in Section 32, Town 4, Range 14, Liberty Township, Logan County, Ohio.

Being out of the John P. Fulkerson and Betty E. Fulkerson original 10 acre tract, original 0.18 acre tract and original 1 acre tract as deeded and described in Official Record 125, Page 71, Tracts I, II and III of the Logan County Records of Deeds and being more particularly described as follows:

Commencing at a railroad spike found on the south line of Section 32 at the intersection of center-lines of Township Road 199 and Dipple Drive.

THENCE, with the south line of Section 32 and the center-line of Township Road 199 (50 feet wide), N 87°-43'-00"W, a distance of 491.83 feet to a MAG nail set at the TRUE POINT OF BEGINNING.

THENCE, with the south line of Section 32 and the center-line of Township Road 199, N 87°-43'-00"W, a distance of 178.99 feet to a 1/2 inch iron rod found.

THENCE, with the east line of the Randall L. Roberts 12.04 acres (Vol. 402, Pg. 971), N 0°-55'-00"E, a distance of 312.80 feet to a 5/8 inch iron rod set, passing a 5/8 inch iron rod set at 25.01 feet.

THENCE, with the south line of the Daniel J. Freyhof 48.89 acre tract (Vol. 404, Pg. 110, Tract I), S 87°-48'-57"E, a distance of 186.45 feet to a 5/8 inch iron rod set.

THENCE, S 2°-17'-00"W, a distance of 313.03 feet to the point of beginning, passing a 5/8 inch iron rod set at 288.03 feet.

Containing 1.312 acres, of which 0.103 acre is within the highway right-of-way.

The basis for bearings is the south line of Section 32, being N 87°-43'-00"W, and all other bearings are from angles and distances measured in a field survey by Lee Surveying and Mapping Co., Inc. on December 6, 2006.

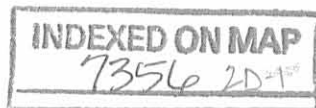


ORIGINAL STAMP IN GREEN

Description prepared by:

[Handwritten Signature]
Jeffrey I. Lee
Professional Surveyor 6359
December 6, 2006

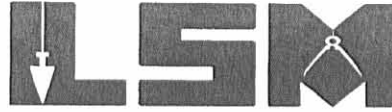
1261116



REC'D 12-11-06 SMY OK
Lee Surveying and Mapping Co., Inc.

Land Surveys • Topography • Subdivisions • Construction Layout

117 N. Madriver St.
Bellefontaine OH 43311



Phone: (937) 593-7335
Fax: (937) 593-7444

1975-2005 - 30 YEARS OF EXCELLENCE

**FULKERSON
1.287 ACRES**

Lying in Section 32, Town 4, Range 14, Liberty Township, Logan County, Ohio.

Being out of the John P. Fulkerson and Betty E. Fulkerson original 10 acre tract, original 0.18 acre tract and original 1 acre tract as deeded and described in Official Record 125, Page 71, Tracts I, II and III of the Logan County Records of Deeds and being more particularly described as follows:

Commencing at a railroad spike found on the south line of Section 32 at the intersection of center-lines of Township Road 199 and Dipple Drive.

THENCE, with the south line of Section 32 and the center-line of Township Road 199 (50 feet wide), N 87°-43'-00"W, a distance of 312.84 feet to a MAG nail set at the TRUE POINT OF BEGINNING.

THENCE, with the south line of Section 32 and the center-line of Township Road 199, N 87°-43'-00"W, a distance of 178.99 feet to a MAG nail set.

THENCE, N 2°-17'-00"E, a distance of 313.03 feet to a 5/8 inch iron rod set, passing a 5/8 inch iron rod set at 25.00 feet.

THENCE, with the south line of the Daniel J. Freyhof 48.89 acre tract (Vol. 404, Pg. 110, Tract I), S 87°-48'-57"E, a distance of 178.99 feet to a 5/8 inch iron rod set.

THENCE, S 2°-17'-00"W, a distance of 313.34 feet to the point of beginning, passing a 5/8 inch iron rod set at 288.34 feet.


Containing 1.287 acres, of which 0.103 acre is within the highway right-of-way.

The basis for bearings is the south line of Section 32, being N 87°-43'-00"W, and all other bearings are from angles and distances measured in a field survey by Lee Surveying and Mapping Co., Inc. on December 6, 2006.

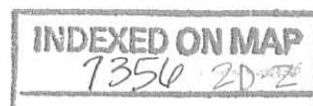
Description prepared by:



ORIGINAL STAMP IN GREEN


Jeffrey I. Lee
Professional Surveyor 6359
December 6, 2006

1261116

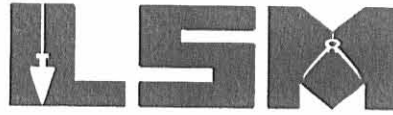


REC'D 12-11-06 SAM ON

Lee Surveying and Mapping Co., Inc.

Land Surveys • Topography • Subdivisions • Construction Layout

117 N. Madriver St.
Bellefontaine OH 43311



Phone: (937) 593-7335
Fax: (937) 593-7444

1975-2005 - 30 YEARS OF EXCELLENCE

**FULKERSON
1.288 ACRES**

Lying in Section 32, Town 4, Range 14, Liberty Township, Logan County, Ohio.

Being out of the John P. Fulkerson and Betty E. Fulkerson original 10 acre tract, original 0.18 acre tract and original 1 acre tract as deeded and described in Official Record 125, Page 71, Tracts I, II and III of the Logan County Records of Deeds and being more particularly described as follows:

Commencing at a railroad spike found on the south line of Section 32 at the intersection of center-lines of Township Road 199 and Dipple Drive.

THENCE, with the south line of Section 32 and the center-line of Township Road 199 (50 feet wide), N 87°-43'-00"W, a distance of 133.85 feet to a MAG nail set at the TRUE POINT OF BEGINNING.

THENCE, with the south line of Section 32 and the center-line of Township Road 199, N 87°-43'-00"W, a distance of 178.99 feet to a MAG nail set.

THENCE, N 2°-17'-00"E, a distance of 313.34 feet to a 5/8 inch iron rod set, passing a 5/8 inch iron rod set at 25.00 feet.

THENCE, with the south line of the Daniel J. Freyhof 48.89 acre tract (Vol. 404, Pg. 110, Tract I), S 87°-48'-57"E, a distance of 178.99 feet to a 5/8 inch iron rod set.

THENCE, S 2°-17'-00"W, a distance of 313.65 feet to the point of beginning, passing a 5/8 inch iron rod set at 288.65 feet.

Containing 1.288 acres, of which 0.103 acre is within the highway right-of-way.

The basis for bearings is the south line of Section 32, being N 87°-43'-00"W, and all other bearings are from angles and distances measured in a field survey by Lee Surveying and Mapping Co., Inc. on December 6, 2006.

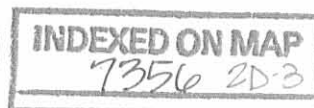


ORIGINAL STAMP IN GREEN

Description prepared by:

A handwritten signature in black ink, appearing to read 'Jeffrey I. Lee'.
Jeffrey I. Lee
Professional Surveyor 6359
December 6, 2006

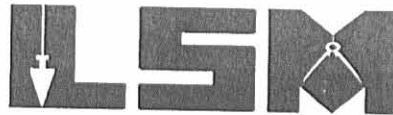
1261116



REV'D 12-11-06 SMM OK
Lee Surveying and Mapping Co., Inc.

Land Surveys • Topography • Subdivisions • Construction Layout

117 N. Madriver St.
Bellefontaine OH 43311



Phone: (937) 593-7335
Fax: (937) 593-7444

1975-2005 - 30 YEARS OF EXCELLENCE

**FULKERSON
1.290 ACRES**

Lying in Section 32, Town 4, Range 14, Liberty Township, Logan County, Ohio.

Being out of the John P. Fulkerson and Betty E. Fulkerson original 10 acre tract, original 0.18 acre tract and original 1 acre tract as deeded and described in Official Record 125, Page 71, Tracts I, II and III of the Logan County Records of Deeds and being more particularly described as follows:

Beginning at a railroad spike found on the south line of Section 32 at the intersection of center-lines of Township Road 199 and Dipple Drive.

THENCE, with the south line of Section 32 and the center-line of Township Road 199 (50 feet wide), N 87°-43'-00"W, a distance of 133.85 feet to a MAG nail set.

THENCE, N 2°-17'-00"E, a distance of 313.65 feet to a 5/8 inch iron rod set, passing a 5/8 inch iron rod set at 25.00 feet.

THENCE, with the south line of the Daniel J. Freyhof 48.89 acre tract (Vol. 404, Pg. 110, Tract I), S 87°-48'-57"E, a distance of 178.99 feet to a 5/8 inch iron rod set.

THENCE, with the west line of the Robert M. Yelton 1.081 acre tract (O.R. 35, Pg. 530), S 2°-17'-00"W, a distance of 313.96 feet to a railroad spike found on the south line of Section 32 and the center-line of Township Road 199, passing a 5/8 inch iron rod found at 288.96 feet.

THENCE, with the south line of Section 32 and the center-line of Township Road 199, N 87°-43'-00"W, a distance of 45.15 feet to the point of beginning.

Containing 1.290 acres, of which 0.103 acre is within the highway right-of-way.

The basis for bearings is the south line of Section 32, being N 87°-43'-00"W, and all other bearings are from angles and distances measured in a field survey by Lee Surveying and Mapping Co., Inc. on December 6, 2006.



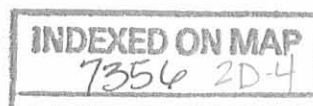
ORIGINAL STAMP IN GREEN

Description prepared by:

A handwritten signature in black ink, appearing to read 'Jeffrey I. Lee'.

Jeffrey I. Lee
Professional Surveyor 6359
December 6, 2006

1261116

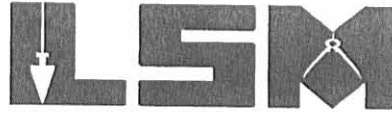


REC'D 12-11-06 SMY/OLC

Lee Surveying and Mapping Co., Inc.

Land Surveys • Topography • Subdivisions • Construction Layout

117 N. Madriver St.
Bellefontaine OH 43311



Phone: (937) 593-7335
Fax: (937) 593-7444

1975-2006 - 30 YEARS OF EXCELLENCE

**FULKERSON
1.242 ACRES**

Lying in Section 32, Town 4, Range 14, Liberty Township, Logan County, Ohio.

Being out of the John P. Fulkerson and Betty E. Fulkerson original 10 acre tract, original 0.18 acre tract and original 1 acre tract as deeded and described in Official Record 125, Page 71, Tracts I, II and III of the Logan County Records of Deeds and being more particularly described as follows:

Commencing at a railroad spike found on the south line of Section 32 at the intersection of center-lines of Township Road 199 and Dipple Drive.

THENCE, with the south line of Section 32 and the center-line of Township Road 199 (50 feet wide), S 87°-43'-00"E, a distance of 195.15 feet to a railroad spike found at the TRUE POINT OF BEGINNING.

THENCE, with the east line of the Robert M. Yelton 1.081 acre tract (O.R. 35, Pg. 530), N 2°-17'-00"E, a distance of 314.22 feet to a 5/8 inch iron rod set, passing a 5/8 inch iron rod found at 25.00 feet.

THENCE, with the south line of the Hi-Point Industries, Inc., 5.072 acre tract (O.R. 205, Pg. 954), S 87°-48'-57"E, a distance of 172.05 feet to a 5/8 inch iron rod set.

THENCE, S 2°-17'-00"W, a distance of 314.52 feet to a MAG nail set on the south line of Section 32 and the center-line of Township Road 199, passing a 5/8 inch iron rod set at 289.52 feet.

THENCE, with the south line of Section 32 and the center-line of Township Road 199, N 87°-43'-00"W, a distance of 172.05 feet to the point of beginning.

Containing 1.242 acres, of which 0.099 acre is within the highway right-of-way.

The basis for bearings is the south line of Section 32, being N 87°-43'-00"W, and all other bearings are from angles and distances measured in a field survey by Lee Surveying and Mapping Co., Inc. on December 6, 2006.

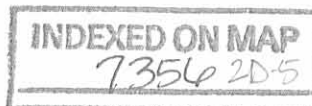
Description prepared by:



ORIGINAL STAMP IN GREEN

[Handwritten Signature]
Jeffrey I. Lee
Professional Surveyor 6359
December 6, 2006

1261116

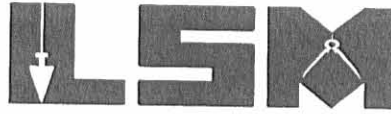


REV'D 12-11-06 SMJ OK

Lee Surveying and Mapping Co., Inc.

Land Surveys • Topography • Subdivisions • Construction Layout

117 N. Madriver St.
Bellefontaine OH 43311



Phone: (937) 593-7335
Fax: (937) 593-7444

1975-2005 - 30 YEARS OF EXCELLENCE

**FULKERSON
1.243 ACRES**

Lying in Section 32, Town 4, Range 14, Liberty Township, Logan County, Ohio.

Being out of the John P. Fulkerson and Betty E. Fulkerson original 10 acre tract, original 0.18 acre tract and original 1 acre tract as deeded and described in Official Record 125, Page 71, Tracts I, II and III of the Logan County Records of Deeds and being more particularly described as follows:

Commencing at a railroad spike found on the south line of Section 32 at the intersection of center-lines of Township Road 199 and Dipple Drive.

THENCE, with the south line of Section 32 and the center-line of Township Road 199 (50 feet wide), S 87°-43'-00"E, a distance of 367.20 feet to a MAG nail set at the TRUE POINT OF BEGINNING.

THENCE, N 2°-17'-00"E, a distance of 314.52 feet to a 5/8 inch iron rod set, passing a 5/8 inch iron rod set at 25.00 feet.

THENCE, with the south line of the Hi-Point Industries, Inc., 5.072 acre tract (O.R. 205, Pg. 954), S 87°-48'-57"E, a distance of 172.05 feet to a 5/8 inch iron rod set.

THENCE, S 2°-17'-00"W, a distance of 314.82 feet to a MAG nail set on the south line of Section 32 and the center-line of Township Road 199, passing a 5/8 inch iron rod set at 289.82 feet.

THENCE, with the south line of Section 32 and the center-line of Township Road 199, N 87°-43'-00"W, a distance of 172.05 feet to the point of beginning.

Containing 1.243 acres, of which 0.099 acre is within the highway right-of-way.

The basis for bearings is the south line of Section 32, being N 87°-43'-00"W, and all other bearings are from angles and distances measured in a field survey by Lee Surveying and Mapping Co., Inc. on December 6, 2006.

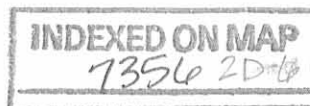


ORIGINAL STAMP IN GREEN

Description prepared by:

Jeffrey I. Lee
Professional Surveyor 6359
December 6, 2006

1261116

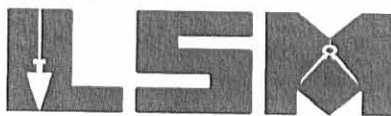


REV'D 12-11-06 SMY OK

Lee Surveying and Mapping Co., Inc.

Land Surveys • Topography • Subdivisions • Construction Layout

117 N. Madriver St.
Bellefontaine OH 43311



Phone: (937) 593-7335
Fax: (937) 593-7444

1975-2005 - 30 YEARS OF EXCELLENCE

**FULKERSON
1.177 ACRES**

Lying in Section 32, Town 4, Range 14, Liberty Township, Logan County, Ohio.

Being out of the John P. Fulkerson and Betty E. Fulkerson original 10 acre tract, original 0.18 acre tract and original 1 acre tract as deeded and described in Official Record 125, Page 71, Tracts I, II and III of the Logan County Records of Deeds and being more particularly described as follows:

Commencing at a railroad spike found on the south line of Section 32 at the intersection of center-lines of Township Road 199 and Dipple Drive.

THENCE, with the south line of Section 32 and the center-line of Township Road 199 (50 feet wide), S 87°-43'-00"E, a distance of 539.25 feet to a MAG nail set at the TRUE POINT OF BEGINNING.

THENCE, N 2°-17'-00"E, a distance of 314.82 feet to a 5/8 inch iron rod set, passing a 5/8 inch iron rod set at 25.00 feet.

THENCE, with the south lines of the Hi-Point Industries, Inc., 5.072 acre tract (O.R. 205, Pg. 954) and the Daniel J. Freyhof 0.44 acre tract (O.R. 588, Pg. 760, Tract II), S 87°-48'-57"E, a distance of 172.04 feet to a 1 inch iron pipe found.

THENCE, with the west line of the Daniel J. Freyhof 0.92 acre tract (O.R. 588, Pg. 760, Tract I), S 2°-16'-58"W, a distance of 270.88 feet to a 5/8 inch iron rod set.

THENCE, with the north line of the State of Ohio 0.067 acre tract (Parcel No. 6-WD, O.R. 173, Pg. 584), the following three courses:

S 76°-38'-53"W, a distance of 17.34 feet to a 5/8 inch iron rod set.

S 81°-53'-27"W, a distance of 66.84 feet to a 5/8 inch iron rod set.

S 2°-17'-00"W, a distance of 27.50 feet to a MAG nail set on the south line of Section 32 and the center-line of Township Road 199.

THENCE, with the south line of Section 32 and the center-line of Township Road 199, N 87°-43'-00"W, a distance of 89.61 feet to the point of beginning.

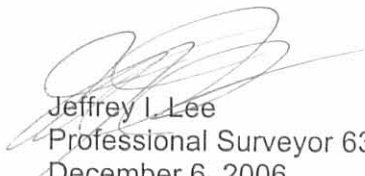
Containing 1.177 acres, of which 0.054 acre is within the highway right-of-way.

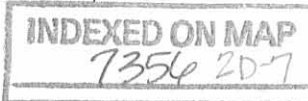
The basis for bearings is the south line of Section 32, being N 87°-43'-00"W, and all other bearings are from angles and distances measured in a field survey by Lee Surveying and Mapping Co., Inc. on December 6, 2006.



ORIGINAL STAMP IN GREEN

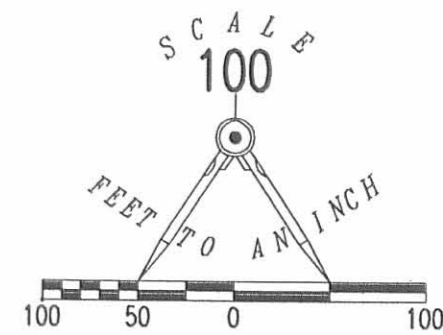
Description prepared by:


Jeffrey I. Lee
Professional Surveyor 6359
December 6, 2006

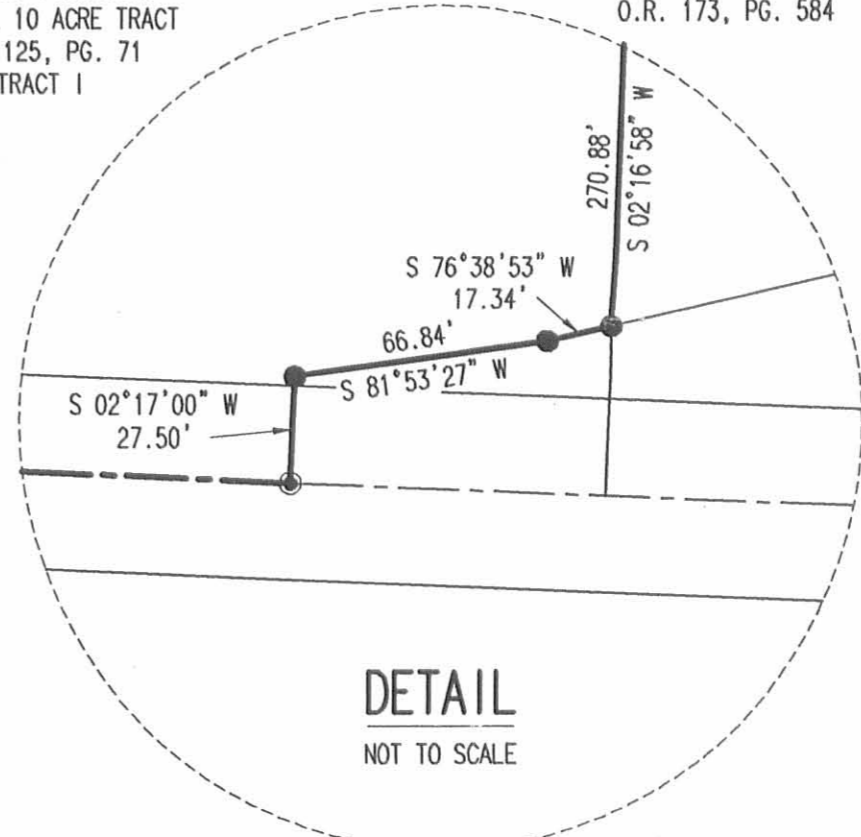
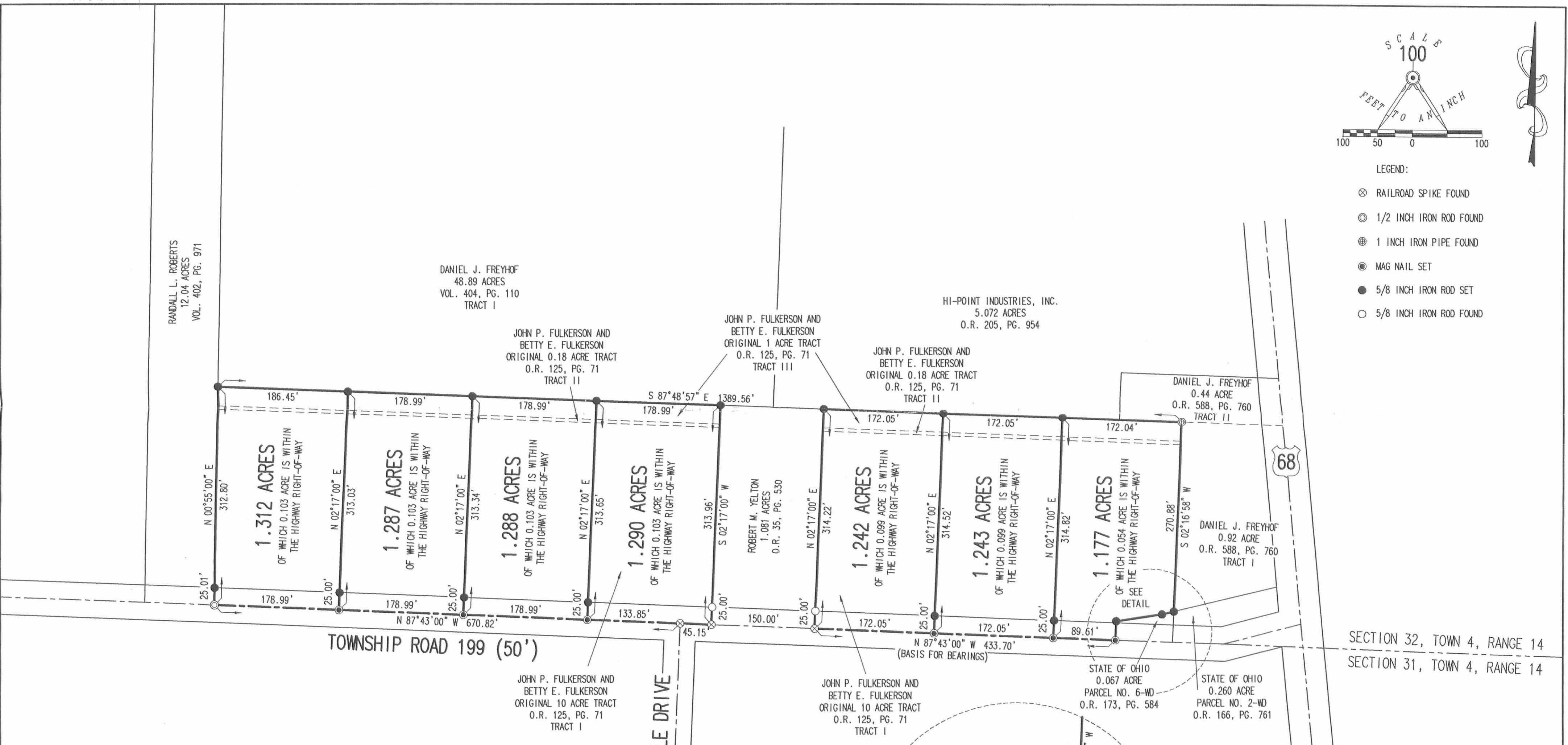


1261116

REV'D 12-11-06 SMM OK



- LEGEND:
- ⊗ RAILROAD SPIKE FOUND
 - ⊙ 1/2 INCH IRON ROD FOUND
 - ⊕ 1 INCH IRON PIPE FOUND
 - MAG NAIL SET
 - 5/8 INCH IRON ROD SET
 - 5/8 INCH IRON ROD FOUND



SECTION 32, TOWN 4, RANGE 14
SECTION 31, TOWN 4, RANGE 14

SURVEY OF SEVEN TRACTS OUT OF THE JOHN P. FULKERSON AND BETTY E. FULKERSON ORIGINAL 10 ACRE TRACT, ORIGINAL 0.18 ACRE TRACT AND ORIGINAL 1 ACRE TRACT OFFICIAL RECORD 125, PAGE 71 TRACTS I, II AND III SECTION 32, TOWN 4, RANGE 14 LIBERTY TOWNSHIP LOGAN COUNTY, OHIO

SURVEYED BY:
Jeffrey I. Lee
JEFFREY I. LEE
PROFESSIONAL SURVEYOR 6359
DECEMBER 6, 2006



COPYRIGHT 2006 BY:
LEE SURVEYING & MAPPING CO., INC.
117 North Madriver Street
BELLEFONTAINE, OHIO 43311
(937) 593-7335

INDEXED ON MAP
1256

2 WORKING DAYS
BEFORE YOU DIG
CALL TOLL FREE 800-362-2764
OHIO UTILITIES PROTECTION SERVICE.

Lee Surveying and Mapping Co.



Farm Surveys • Lot Surveys • Topography • Subdivisions • Construction Layout

855 EAST SANDUSKY AVENUE
BELLEFONTAINE, OHIO 43311

(513) 593-5780

CLAYTON M. LEE, P.S.
JEFFREY I. LEE, P.S.

DIPPLE SURVEY (1.081 ACRE)

Lying in the south part of Section 32, T-4, R-14, Liberty Township,
Logan County, Ohio.

Being a part of that 10 acre tract as deeded and described (Part of
30 acres) in Volume 138, Page 532 and Volume 152, Page 107-108, along with
that survey record recorded in Logan County Engineer's Field Book 570,
Page 70. Being more particularly described as follows.

Beginning at a railroad spike set on the center-line of County Road
199, a distance easterly, along said center-line, of 45.15 feet from the
center-line intersection with Dipple Road (Southgate Acres).

THENCE, at right angles with said County Road 199, N 2°-17' E, a dis-
tance of 313.93 feet to a 5/8" iron rod set on the north line of said 10
acre tract, passing a 5/8" iron rod set at 25.00 feet.

THENCE, with said north line, S 87°-52'-30" E, a distance of 150.00
feet to a 5/8" iron rod.

THENCE, parallel to the west line of this survey, S 2°17' W, a dis-
tance of 314.18 feet to a railroad spike set on the center-line of County
Road 199, passing a 5/8" iron rod at 289.18 feet.

THENCE, with the road center-line, N 87°43' W, a distance of 150.00
feet to the point of beginning.

Containing 1.081 acres.

Prepared from an actual field survey.

By:

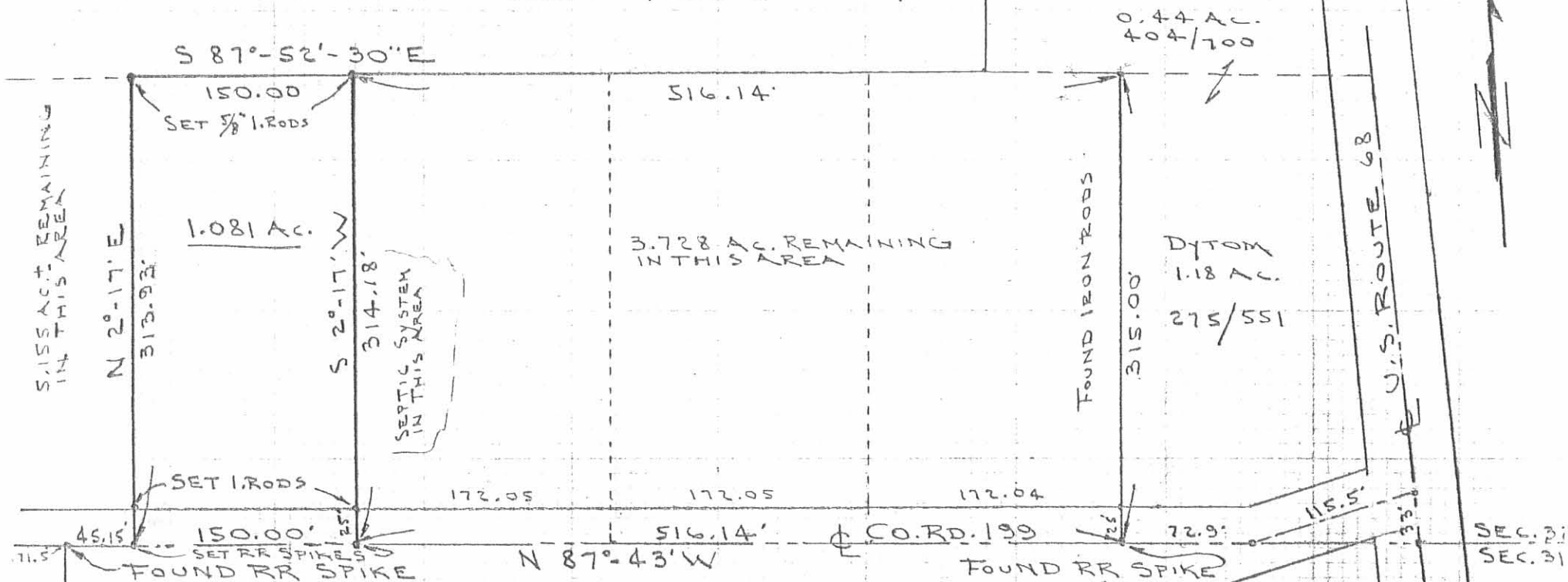
Clayton M. Lee

Clayton M. Lee
Registered Surveyor No. 6181
April 18, 1985



L-1261
ORIGINAL STAMP IN GREEN

FREYHOF, 49.89 AC.
VOL. 404, PG. 110 (TRACT 1)



SCALE - 1" = 100'

SURVEY OF 1.081 ACRE OUT OF THE
DIPPLE 10 ACRE TRACT (VOL. 138, PG. 532 & VOL. 152, PG. 107-108)
SEC. 32, T-4, R-14, LIBERTY TWP.
LOGAN COUNTY, OHIO

REFER.
DIPPLE - DETWEILER
Vol. 147, PG. 94

SURVEY RECORDS:
FB. 570, PG. 70 (CO. ENGR)
MORT. VOL. 247, PG. 188

By: Jeffrey I. Lee
JEFFREY I. LEE
REG. SURVEYOR 6359
4-15-85

INDEXED ON MAP
735630



ORIGINAL STAMP IN GREEN

L-1261-S

Received 4-18-85 CK