

Records 12-1-91 2-1-91

# Lee Surveying and Mapping Co., Inc.

Land Surveys • Topography • Subdivisions • Construction Layout

117 N. Madriver St.  
Bellefontaine OH 43311



Phone: (937) 593-7335  
Fax: (937) 593-7444

## YODER 123.827 ACRES

Lying in Section 4, Town 4, Range 13, Union and Liberty Townships, Logan County, Ohio.

Being all of the remainder of the James L. Yoder, Margaret E. Yoder, Eric B. Yoder and Teresa A. Yoder 61.49 acre tract and 73.51 acre tract as deeded and described in Official Record 180, Pages 903 and 907, Tracts I and II of the Logan County Records of Deeds and being more particularly described as follows:

Beginning at a P.K. nail found on the northwest corner of Section 4 at the intersection of the center-lines of Ohio Route 508 and Township Road 187.

THENCE, with the west line of Section 4 and the center-line of Township Road 187, (40 feet wide), S 4°-01'-13" W, a distance of 199.10 feet to a MAG nail set at the TRUE POINT OF BEGINNING.

THENCE, with the south line of the A. Ray Yoder 1.0 acre tract, (Vol. 223, Pg. 81), S 85°-59'-27" E, a distance of 218.85 feet to a 5/8 inch iron rod found, passing a 5/8 inch iron rod set at 20.00 feet.

THENCE, with the south line of the A. Ray Yoder 0.112 acre tract, (O.R. 268, Pg. 406), S 85°-59'-58" E, a distance of 24.60 feet to a 5/8 inch iron rod found.

THENCE, with the south lines of the Michael E. Esch 1.081 acre tract, (O.R. 276, Pg. 362), the Michael E. Esch 1.081 acre tract, (O.R. 268, Pg. 408), and the Stacey A. Moist 1.081 acre tract, (O.R. 274, Pg. 653), S 86°-01'-05" E, a distance of 709.68 feet to a 5/8 inch iron rod found.

THENCE, with the lines of the Todd A. Rose 1.27 acre tract, (O.R. 116, Pg. 417), the following three (3) courses:

S 4°-00'-43" W, a distance of 88.36 feet to a 5/8 inch iron rod found.

S 86°-00'-30" E, a distance of 192.26 feet to a 5 inch by 5 inch wood post found.

N 4°-01'-03" E, a distance of 287.41 feet to a MAG nail set, passing a 5/8 inch iron rod found at 257.28 feet.

THENCE, with the north line of Section 4 and the center-line of Ohio Route 508, S 86°-00'-20" E, a distance of 1482.73 feet to a railroad spike found.

THENCE, with the lines of the Rodney A. Kerns 1.031 acre tract, (O.R. 290, Pg. 498), the following three (3) courses:

S 4°-29'-38" W, a distance of 274.68 feet to a 5/8 inch iron rod found, passing a 5/8 inch iron rod found at 30.00 feet.

S 85°-30'-59" E, a distance of 163.38 feet to a 5/8 inch iron rod found.

N 4°-30'-21" E, a distance of 275.05 feet to a MAG nail found, passing a 5/8 inch iron rod found at 245.05 feet.

THENCE, with the north line of Section 4 and the center-line of Ohio Route 508, S 85°-30'-00" E, a distance of 59.97 feet to a MAG nail set.

THENCE, with the lines of the Rodney A. Kerns 8.00 acre tract, (O.R. 52, Pg. 441), the following three (3) courses:

S 4°-30'-24" W, a distance of 765.16 feet to a 5/8 inch iron rod found, passing a 5/8 inch iron rod found at 30.10 feet.

# Lee Surveying and Mapping Co., Inc.

Land Surveys • Topography • Subdivisions • Construction Layout

117 N. Madriver St.  
Bellefontaine OH 43311



Phone: (937) 593-7335  
Fax: (937) 593-7444

S 85°-29'-44" E, a distance of 455.38 feet to a 5/8 inch iron rod found.

N 4°-31'-47" E, a distance of 490.05 feet to a 5/8 inch iron rod found.

THENCE, with the south lines of the Ronald C. Park 1.357 acre tract, (O.R. 313, Pg. 873), the Arthur E. Spragen Jr. 1.031 acre tract, (O.R. 338, Pg. 225), the Jacque Stoner 1.081 acre tract, (O.R. 343, Pg. 496), the Ronald D. Kindle 1.092 acre tract, (O.R. 408, Pg. 595), the Ronald D. Kindle 1.031 acre tract, (O.R. 428, Pg. 267), the Paul E. Cummins 1.031 acre tract, (O.R. 358, Pg. 877), the Lisa Baldwin 1.031 acre tract, (O.R. 386, Pg. 943, Tract II), and the Lisa Baldwin 1.031 acre tract, (O.R. 386, Pg. 943, Tract I), S 85°-30'-26" E, a distance of 1377.47 feet to a 5/8 inch iron rod found.

THENCE, with the west line of the Richard Lee Yoder 20.45 acre tract, (O.R. 211, Pg. 645, Tract II), S 3°-42'-54" W, a distance of 1075.47 feet to a stone found.

THENCE, with the north line of the Velma Plank original 159.4 acre tract, (Vol. 391, Pg. 913), N 86°-06'-32" W, a distance of 4687.92 feet to a MAG nail set, passing a 1 foot square concrete post found at 4663.73 feet.

THENCE, with the west line of Section 24 and the center-line of Township Road 187, N 4°01'-13" E, a distance of 1177.44 feet to the point of beginning.

Containing 123.827 acres, of which 1.337 acres are within the highway rights-of-way, 78.110 acres are in Union Township and 45.717 acres are in Liberty Township.

The basis for bearings is the north line of Section 4, being S 86°-00'-20" E, and all other bearings are from angles and distances measured in a field survey by Lee Surveying and Mapping Co., Inc. on November 12, 1999.

Description prepared by:

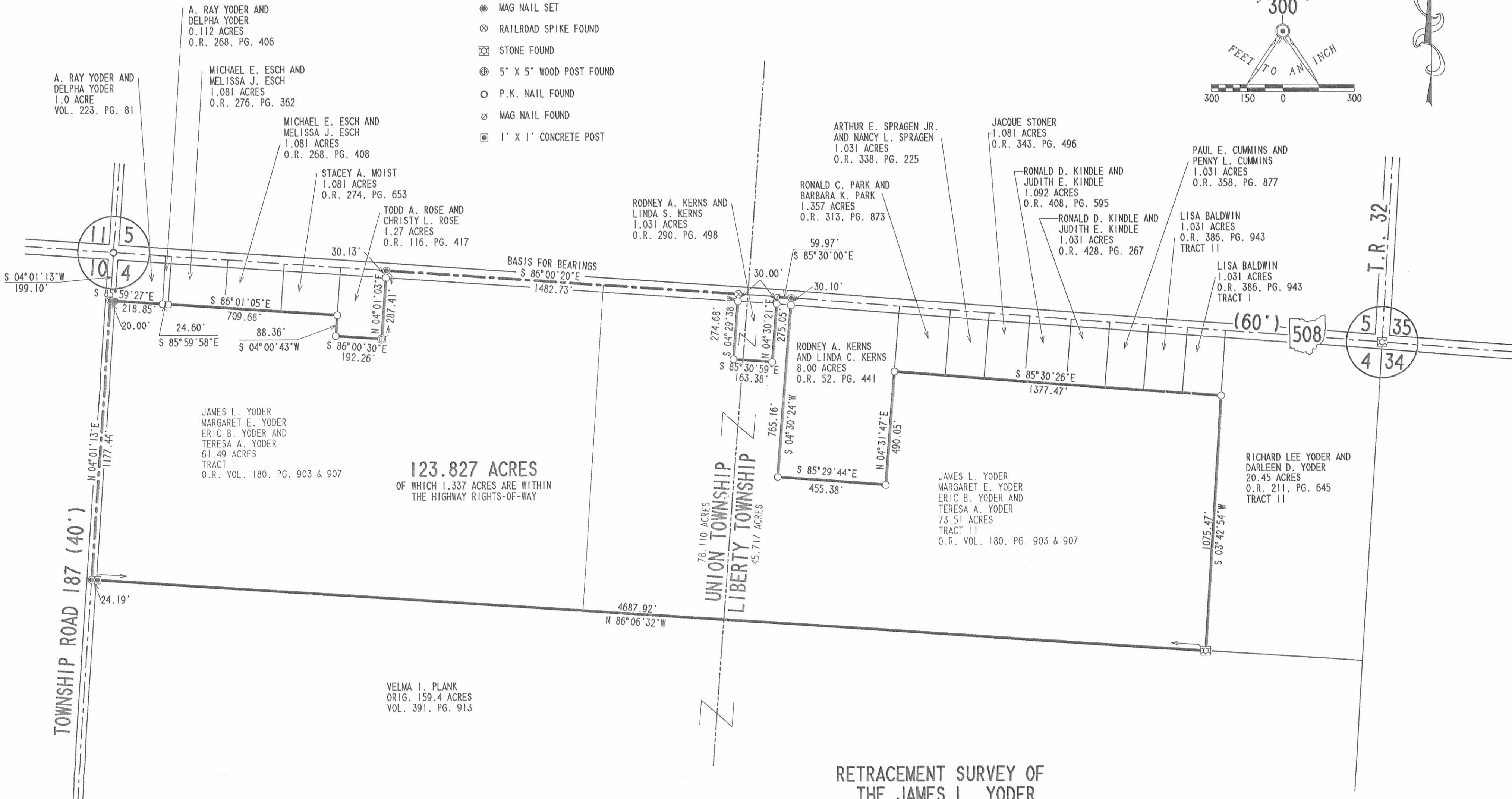
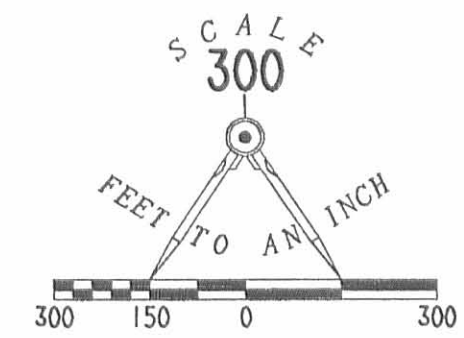


A handwritten signature in black ink, appearing to read 'Jeffrey I. Lee'.  
Jeffrey I. Lee  
Professional Surveyor 6359  
November 18, 1999

L-2298

LEGEND

- 5/8 INCH IRON ROD SET
- 5/8 INCH IRON ROD FOUND
- ⊙ MAG NAIL SET
- ⊗ RAILROAD SPIKE FOUND
- ⊠ STONE FOUND
- ⊕ 5" X 5" WOOD POST FOUND
- P.K. NAIL FOUND
- ⊖ MAG NAIL FOUND
- 1' X 1' CONCRETE POST



RETRACEMENT SURVEY OF  
THE JAMES L. YODER  
MARGARET E. YODER  
ERIC B. YODER AND  
TERESA A. YODER  
61.49 ACRE AND 73.51 ACRE TRACTS  
OFFICIAL RECORD 180, PAGE 903 & 907  
TRACTS I AND II  
SECTION 4, TOWN 4, RANGE 13  
UNION AND LIBERTY TOWNSHIPS  
LOGAN COUNTY, OHIO

SURVEYED BY:

JEFFREY L. LEE  
PROFESSIONAL SURVEYOR 6359  
NOVEMBER 12, 1999

COPYRIGHT 1999 BY:  
LEE SURVEYING & MAPPING CO., INC.  
117 North Madriver Street  
BELLEFONTAINE, OHIO 43311  
(937) 593-7335



ORIGINAL STAMP IN GREEN

D 363 JYODER

L-2298-2

2 WORKING DAYS  
**BEFORE YOU DIG**  
CALL TOLL FREE 800-362-2764  
OHIO UTILITIES PROTECTION SERVICE.