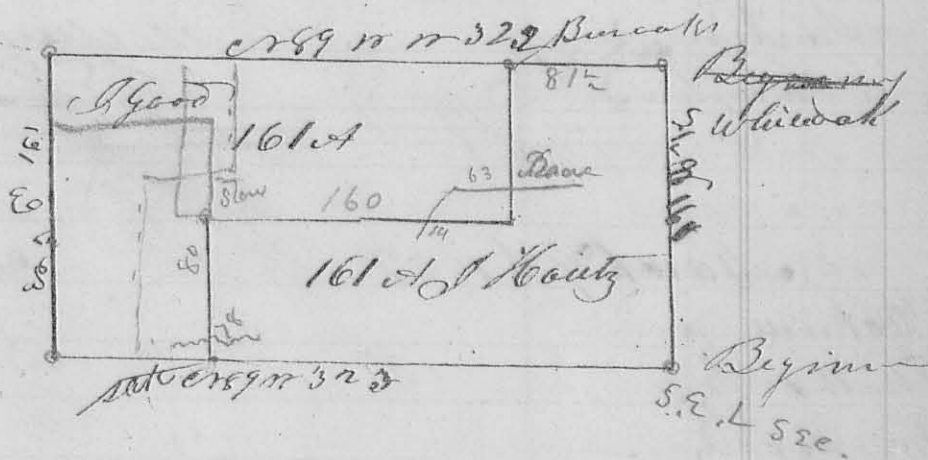


165 of said sec. a white oak 161 N 13 E, a white oak N 50 E 53 S, thence between sec 3 & 4 & 189 W crossing a branch at 248 poles) 323 poles to the corner of sec 3 & 4 9 & 10 a black oak N 34 E 12 S a white oak 166 W 46 S thence sec 4 & 10 N 1/2 E crossing a spring branch at 98 poles) 160 poles to the original gr sec corner, a white oak N 2 E 50 S a white oak 115 N 25 S, the latter is down - thence 189 1/2 (crossing a branch at 298 poles), 322 poles to a small bur oak in the east line of the sec - thence S 1/2 W crossing a branch at 160 poles) 160 poles to the beginning containing 322 ac 2/3

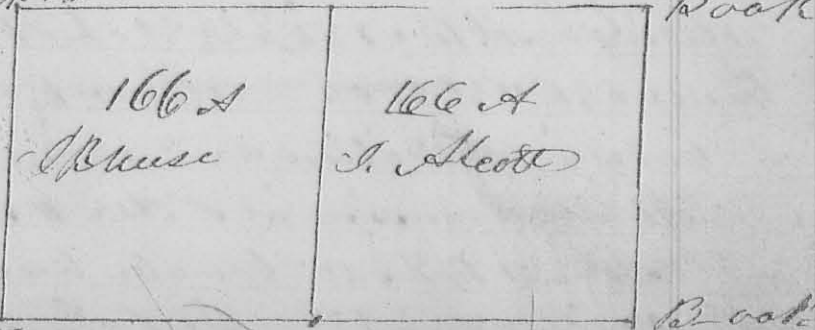
The division line begins in the north line of the sec. 81 1/2 poles from the corner of the gr a bur oak



east 6 S a bur oak oak N 43 W 13 E - thence S 1/2 W crossing a mill race at 63 poles) 80 poles to a white oak N 42 E 16 S thence E 189 1/4 W crossing the mill race at 14 poles) 160 poles to a stone - thence S 1/2 W crossing a branch at 78 poles 80 poles to a stake in a prairie in the south line of the sec -

J. Meatt } 2nd mo. Feb. 1833 } Survey No 204 (8290)
 J. Meuse }
 No 204 } Surveyed the south half of sec
 } 4 & 7 R 13 M. S. for Isaac Meatt & John Meuse
 Beginning at the corner of sec 3, 4, 9 & 10 a hickory
 north 5 S oak & sic

a hickory S 24 E 16 S
 thence between
 sec 3 & 4 East 326
 poles to the corner
 between 3 & 4 a
 black oak S 61 E 13 S 1/2



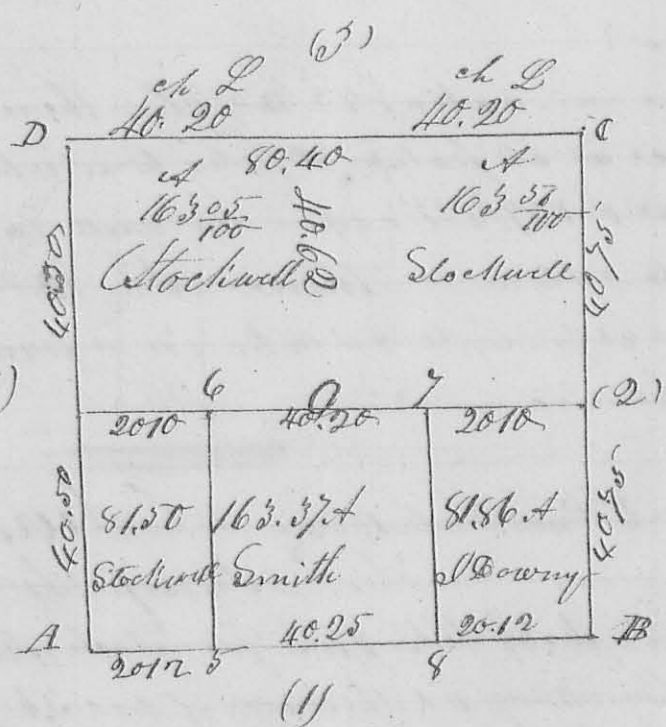
Note a bur oak at 65 W 12 L the black oak is broken down
 thence on the east line of the sec. 7 1/2 E (at a small
 branch at 118 poles) 16 3/4 poles marked a small black
 oak at 85 E 11 L a black oak bush at 26 W 10 1/2 L
 thence west 32 3/4 poles to the original 90 sec corner between
 Secs 10 & 11 a white oak 57 7/8 W 12 L a hickory at 37 6/8 20 L
 thence between Secs 10 & 11 S 1/2 W 16 3/4 poles to the beginning
 containing 33 1/2 acres - The division line begins in
 the south line of the sec. at 16 3/4 poles from each
 corner a hickory at 29 6/8 16 L a hickory 55 8 W 12 L thence
 at 1/2 E 16 3/4 poles to a stake in the centre of the sec.
 La King & Co. La. W. Warner
 J. C. Clayton

March 9th 1833

Survey No. 205

Stockwell }
 Smith }
 Downy }
 2000 }
 2000 }
 2000 }
 2000 }
 2000 }
 2000 }
 2000 }
 2000 }
 2000 }
 2000 }

(3291)



Bearing of the section lines in the above plat is as
 follows A. B. at 8 1/4 E 80 ch 50 L thence at 75 W 81.50 ch
 thence S 85 W 50.40 ch - thence S 81 E 10 ch -

Corners of section and division lines are as follows
 At A Sec. corner - at 5 Ash W N. D. 11 E 3 1/2 L Iron
 = wood 183 W 17 L. at 6 water beech 4 1/2 S 30 1/2 W 17 L
 ash 22 1/2 E 2 7/8 At O Lynn 36 ch East 17 L

274

N389

9447

#12052

Surveyed September 28, 1837 for David Scott Hittler,
 Survey No 6476 as follows - Beginning 2 Ash & 2
 Hickories NW Corner to Michael Rudolph's Survey
 No 9902 thence N5°W 102 poles to a Run oak hick-
 ory & small Ash the Southeast corner to Walter Penn-
 Survey No 10951 thence with his Line S78°W 214 poles to
 2 Red oaks small Run Oak & Hickory in Robert's Line
 thence with said Line S24°30'E 102 poles to 2 Whitewoaks
 & an Ash thence N78°E 180 poles to the beginning
 Containing 124³/₄ Acres.

Dan Hopkins Co. Sw. 46

N390

8290

Surveyed Oct 1837 for James Wall the N half of Sect
 4 T4. R13 M. R. 5 as follows Beginning at a Run
 Oak 12 Inches diameter N52°E 17 Links, a Stone in a
 State road thence N99°W 80 ch 50 L. to a Stone a Wh.
 Oak 20 I.D. S44°W 10 Links, thence S0°20'W 40 ch 62 Links
 to a White Oak 10 I.D. S77°W 12 Links and Hickory 8 I.D.
 N37°E 16 Links, thence the original q. corner, thence S89°30'E
 80 ch 75 Links to a Jack Oak 12 I.D. N84°E 31 Links, and
 Jack Oak 8 I.D. S7°E 35 Links in the East Line of the
 Section thence with said Line N40° chain to the beginning
 Containing 93²/₅ Acres -

Dan Hopkins Co. Sw. 46

N°391

8416

Survey for Pollock the NW. q. and part of the SW
 quarter of S34 T5. R13 M. R. 5 as follows. Beginning
 as in the foregoing Survey, thence with the Section Line
 South 60 chain to a Jack oak 12 I.D. N84°E 31 Links
 and Jack Oak 8 I.D. S7°E 35 Links thence S89°E 5 chain
 to a Jack Oak 8 I.D. N76°W 13 Links and Jack Oak
 South 8 Links, thence South 40 chain crossing a hand
 to a Jack Oak 8 I.D. N71°W 5 Links, and southerly point of
 a Rock heap S69°W 30 Links in the South line of the
 Section, thence with said Line S89°E 37 ch. 65 Links -
 crossing a small branch to a Stone in a prairie

282

thence West 58/100. crossing a branch at 25 poles to a Stake in Knop; & said Lin. thence with said Lin North 55.2/100 pole. crossing branch at 25 1/2 an on at 36 p. to the beginning. Containing 20 acrs. Peter Knop. J. F. Knunkopf ch. men.

Dan Hopkins Co. S. T. C. O.

N^o 406

8490

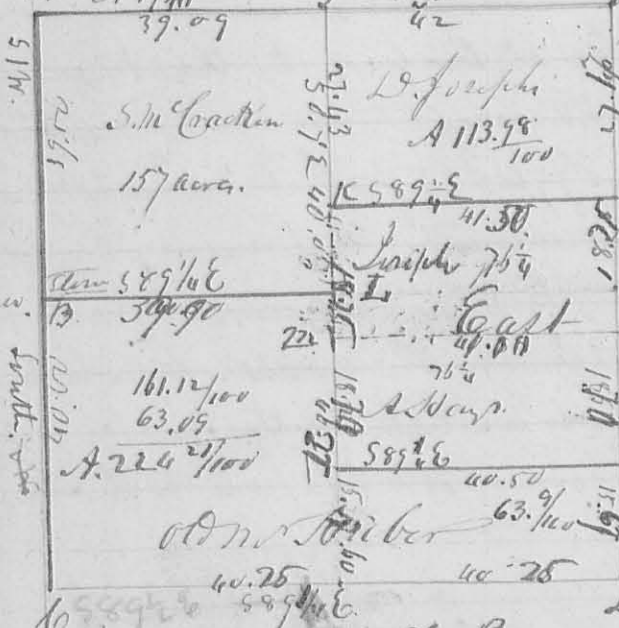
Surveyed March 14. 1838 a Lin between William McV^o & David Shields. Acin. as follows.

Beginning on the line dividing S. 34. T. 5. R. 13 N. W. 1/4 from north to south. and N^o 69 ch 37 Links from a stem in the center of the South line of said Section at a White Oak 24 1/2 ch 12 Links thence S 87 1/2 E 62 ch 65 Link to a stem in the East Lin of said Section and N^o 69 ch. 37 Links from J. P. Miller N W corner - Dan Hopkins Co. S. T. C. O.

N^o 407

8426

Survey and Subdivision of S. 74. R. 13 N. W. 1/4 for Saml McFrank on Dan. Joseph. Alfred Hays and Horner made March 23rd 1838. Bound as follows. James Carter ch. men.

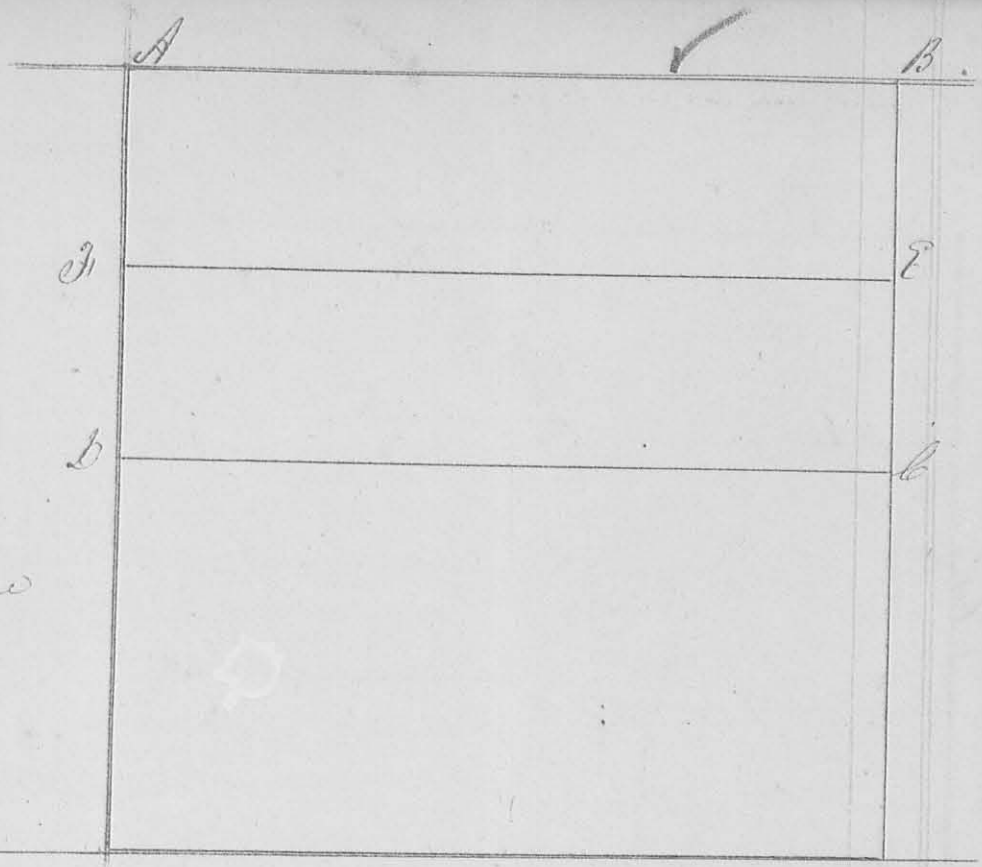


Description of Corners.
A. NW Corner of the section the original bearing true down planted stem and marked White Oak 15 1/2 ch 61 Links - B. Oak 12 1/2 ch 32 1/2 18 links planted stem. C. SW Sect corner. planted stem in a Stake and D. Bur. 0 12 15 26 17 Links. E - Jack oak 8 1/2 ch 589 1/4 65 Links. F. Bur. Oak 6 1/2 ch 137 1/4 8 Links ditto G. 56 1/2 ch 64 Links. G. Stem. H. Jack oak 10 1/2 ch 110 E 11 Links. ditto 6. 1/2 ch 523 E 9 Links. I. Stem. orig. tree standing a white oak 20 1/2 ch 542 1/2 29 Links. K. Stem. L. Mickay 6 1/2 ch 15 1/2 15 Links Jack oak 3 1/2 ch 564 E 18 Links. M - Bl. Oak 15 1/2 ch 1302 29 Link. an an oak 580 1/2 15 Links - Dan Hopkins Co. S. T. C. O.

Survey
No 547

(8190)

Magnetic Course
varies $1\frac{1}{2}^{\circ}$



Surveyed Oct 20th 1825 for David Moyer the following lot of land being the North half of section 4, Town 4, Range 13 MHD as follows

A = Run Oak, 2295 S 43° E, 17 links, Dist	} AB = 321.4 poles Bb = 160.7 " Db = 322.5 " AD = 163. "
" = White Oak, 2000 S 44 W, 10 " "	
B = Bottom Oak, 1230 N 52° E, 17 " "	
b = planted Stone	

D = planted Stone

J Walls
McRitts
Martin

Containing $325\frac{61}{100}$ Acres deducting 121 acres $204\frac{61}{100}$ Acres

At the same time struck off on the South side of said lot ~~section~~ the following lot; to wit, Beginning at c Being the Centre of the East line of said section of run West 322.5 poles to a Stone in the Centre of the West line of said section then North 80.4 poles to a Stone then East 321.8 poles to a Stone in the East section line then South 80.4 poles to the Beginning, Containing $161\frac{80}{100}$ Acres

J Pollock } Ch Cr
Chas Brown } " "

J. Harbison
C S & Co